

Company.....Delhi Oil Corporation.....

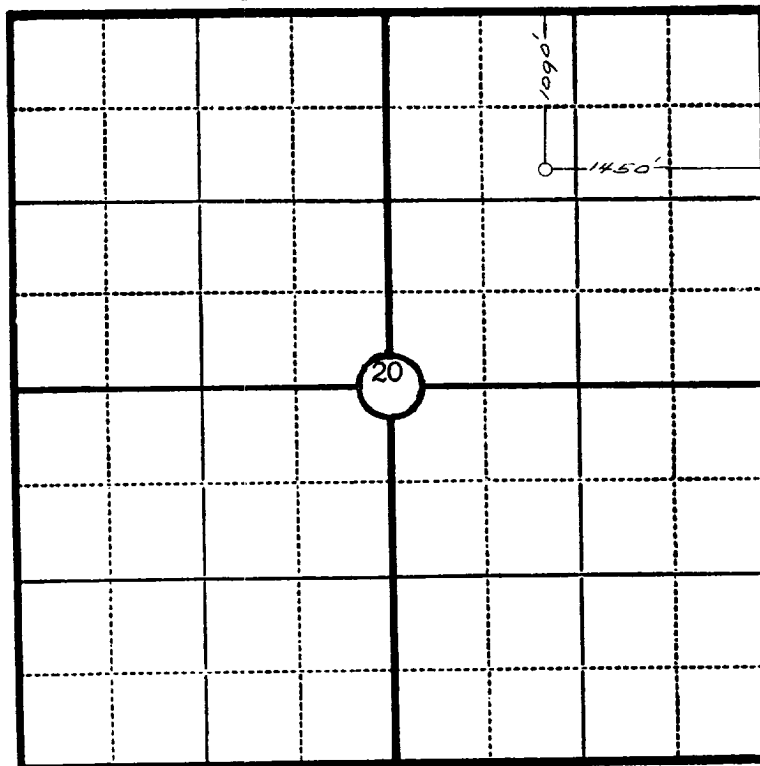
Lease.....Linda Eye Unit..... Well No. 1

Sec. 20 , T. 30 N. , R. 8 W. , N.M.P.M.

Location 1090' from the North line and 1450' from  
the East line.

San Juan County

New Mexico



Scale—4 inches equal 1 mile.

This is to certify that the above plat was prepared from field notes of actual surveys made by me or under my supervision and that the same are true and correct to the best of my knowledge and belief.

*Ernest V. Echohawk*

Seal:

Registered Professional  
Engineer and Land Surveyor.

Ernest V. Echohawk  
N. Mex. Reg. No. 1545

Surveyed October 8 , 1953

OIL CONSERVATION COMMISSION		
AZTEC DISTRICT OFFICE		
No. Copies Received 6		
DISTRIBUTION		
	NO. FURNISHED	
Operator	2	
Santa Fe	1	
Proration Office		
State Land Office		
U. S. G. S.	2	
Transporter		
File	1	✓