

UNITED STATES
DEPARTMENT OF THE INTERIOR
GEOLOGICAL SURVEY

APPLICATION FOR PERMIT TO DRILL, DEEPEN, OR PLUG BACK

1a. TYPE OF WORK

DRILL ☐DEEPEN ☒PLUG BACK ☐

b. TYPE OF WELL

OIL
WELL ☐GAS
WELL ☒

OTHER

SINGLE
ZONE ☐MULTIPLE
ZONE ☒

2. NAME OF OPERATOR

Tenneco Oil Company

3. ADDRESS OF OPERATOR

Box 1714, Durango, Colorado

4. LOCATION OF WELL (Report location clearly and in accordance with any State requirements.)*

At surface

1850' FNL 990' FEL

At proposed prod. zone

Same

14. DISTANCE IN MILES AND DIRECTION FROM NEAREST TOWN OR POST OFFICE*

15. DISTANCE FROM PROPOSED*

LOCATION TO NEAREST
PROPERTY OR LEASE LINE, FT.
(Also to nearest drlg. unit line, if any)

16. NO. OF ACRES IN LEASE

320

17. NO. OF ACRES ASSIGNED
TO THIS WELL

320

18. DISTANCE FROM PROPOSED LOCATION*
TO NEAREST WELL, DRILLING, COMPLETED,
OR APPLIED FOR, ON THIS LEASE, FT.

19. PROPOSED DEPTH

7522

20. ROTARY OR CABLE TOOLS

Rotary

21. ELEVATIONS (Show whether DF, RT, GR, etc.)

6272 GR

22. APPROX. DATE WORK WILL START*

Oct. 6, 1965

5. LEASE DESIGNATION AND SERIAL NO.

NM 012711

6. IF INDIAN, ALLOTTEE OR TRIBE NAME

7. UNIT AGREEMENT NAME

8. FARM OR LEASE NAME

Florance

9. WELL NO.

36

10. FIELD AND POOL, OR WILDCAT Dual

Blanco MV & Basin Dakota

11. SEC., T., R., M., OR BLK.
AND SURVEY OR AREA

Sec. 3, T30N, R8W

12. COUNTY OR PARISH

San Juan

13. STATE

N.M.

23.

PROPOSED CASING AND CEMENTING PROGRAM

SIZE OF HOLE	SIZE OF CASING	WEIGHT PER FOOT	SETTING DEPTH	QUANTITY OF CEMENT
5-7/8	4-1/2	11.6 & 10.5#	7522	2 stages, circulate 2nd stage to surface.

We propose to rig up compl. rig, pull tubing. Squeeze open hole w/450 sx cement. Take free point on 4-1/2 casing string. Cut off 4-1/2 below 3260 and pull. Spot 25 sx cement plug on top of cut off casing stub. Test casing. Set 3° knuckle joint and drill 5-7/8" hole to approximate TD 7522'. Run GR-Density Log and Hole Caliper Log. Run 4-1/2" 11.6# and 10.5# J-55 casing. Set at TD w/cement stage collar set approximately 3200' or 250' inside 6-5/8 casing. WOC. Clean out to TD. Perf, frac and complete MV and Dakota formations. Set Model D Packer between zones and run tubing set in packer. Complete as dual MV and Dakota. Conduct deliverability and packer leakage tests.

IN ABOVE SPACE DESCRIBE PROPOSED PROGRAM: If proposal is to deepen or plug back, give data on present productive zone and proposed new productive zone. If proposal is to drill or deepen directionally, give pertinent data on subsurface locations and measured and true vertical depths. Give blowout preventer program, if any.

24.

Original Signed By
HAROLD C. NICHOLS
SIGNED H. C. NicholsTITLE Senior Production ClerkDATE 10-4-65

(This space for Federal or State office use)

PERMIT NO. _____

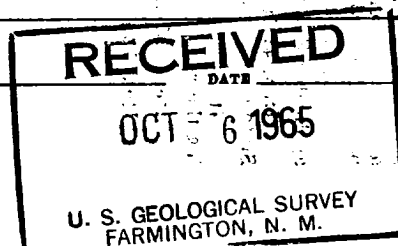
APPROVAL DATE _____

APPROVED BY 6

TITLE _____

CONDITIONS OF APPROVAL, IF ANY:

*See Instructions On Reverse Side



NEW MEXICO OIL CONSERVATION COMMISSION
WELL LOCATION AND ACREAGE DEDICATION PLAT

Form C-102
Supersedes C-128
Effective 1-1-65

All distances must be from the outer boundaries of the Section.

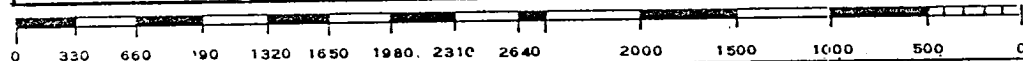
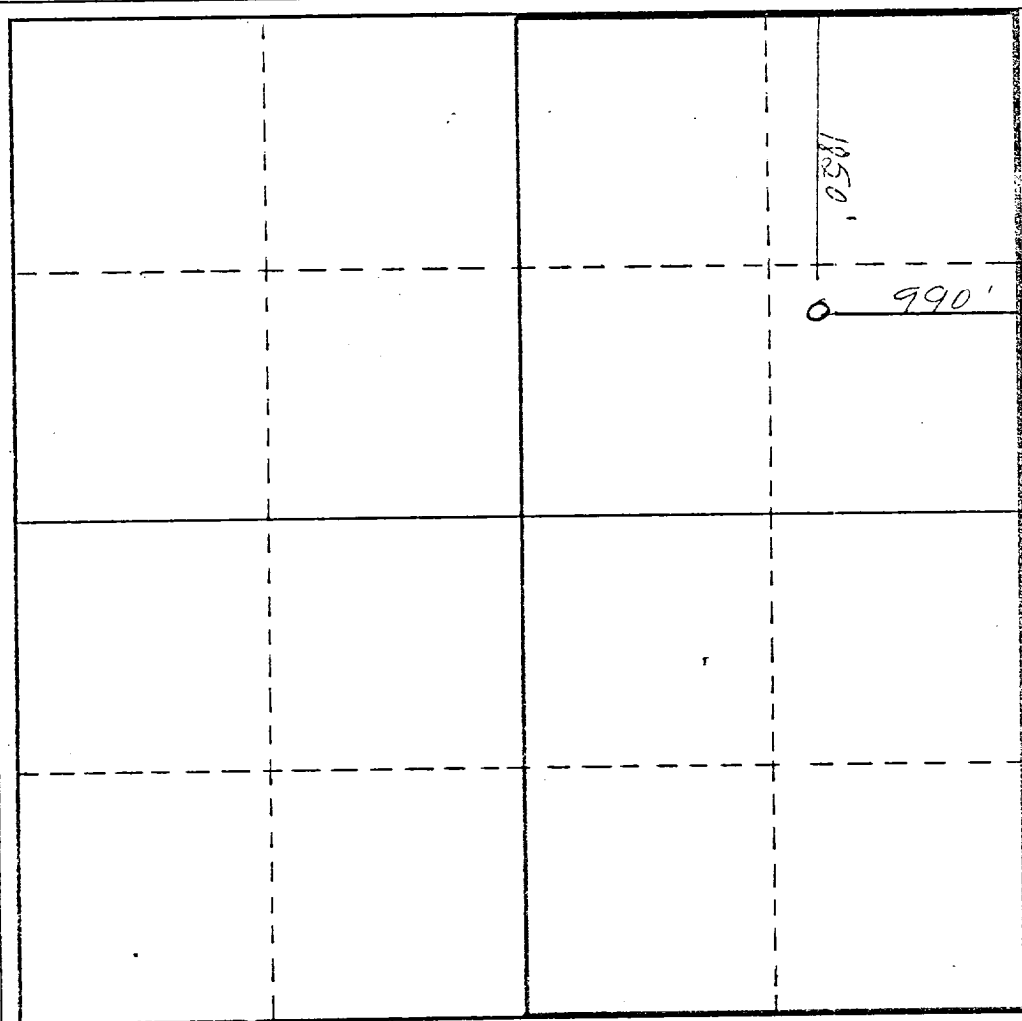
Operator TENNECO OIL COMPANY			Lease FLORANCE		Well No. 36
Unit Letter H	Section 3	Township 30N	Range 8W	County San Juan	
Actual Footage Location of Well: 1850 feet from the North line and 990 feet from the East line					
Ground Level Elev. 6284	Producing Formation BLANCO MESAVERDE		Pool BLANCO MESAVERDE		Dedicated Acreage: E/2 323.20 Acres

1. Outline the acreage dedicated to the subject well by colored pencil or hachure marks on the plat below.
2. If more than one lease is dedicated to the well, outline each and identify the ownership thereof (both as to working interest and royalty).
3. If more than one lease of different ownership is dedicated to the well, have the interests of all owners been consolidated by communitization, unitization, force-pooling, etc?

☐ Yes ☐ No If answer is "yes," type of consolidation _____

If answer is "no," list the owners and tract descriptions which have actually been consolidated. (Use reverse side of this form if necessary.) _____

No allowable will be assigned to the well until all interests have been consolidated (by communitization, unitization, forced-pooling, or otherwise) or until a non-standard unit, eliminating such interests, has been approved by the Commission.



CERTIFICATION

I hereby certify that the information contained herein is true and complete to the best of my knowledge and belief.

Name **Mary K. Wagner**

Position
Tenneco Oil Company

Company

Date **October 5, 1967**

Date

I hereby certify that the well location shown on this plat was plotted from field notes of actual surveys made by me or under my supervision, and that the same is true and correct to the best of my knowledge and belief.

Date Surveyed

Registered Professional Engineer and/or Land Surveyor

Certificate No.

**NEW MEXICO OIL CONSERVATION COMMISSION
WELL LOCATION AND ACREAGE DEDICATION PLAT**

Form C-102
Supersedes C-128
Effective 1-1-65

All distances must be from the outer boundaries of the Section.

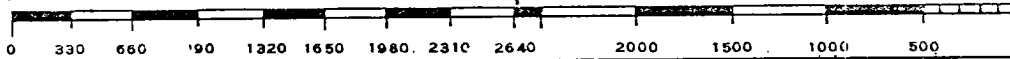
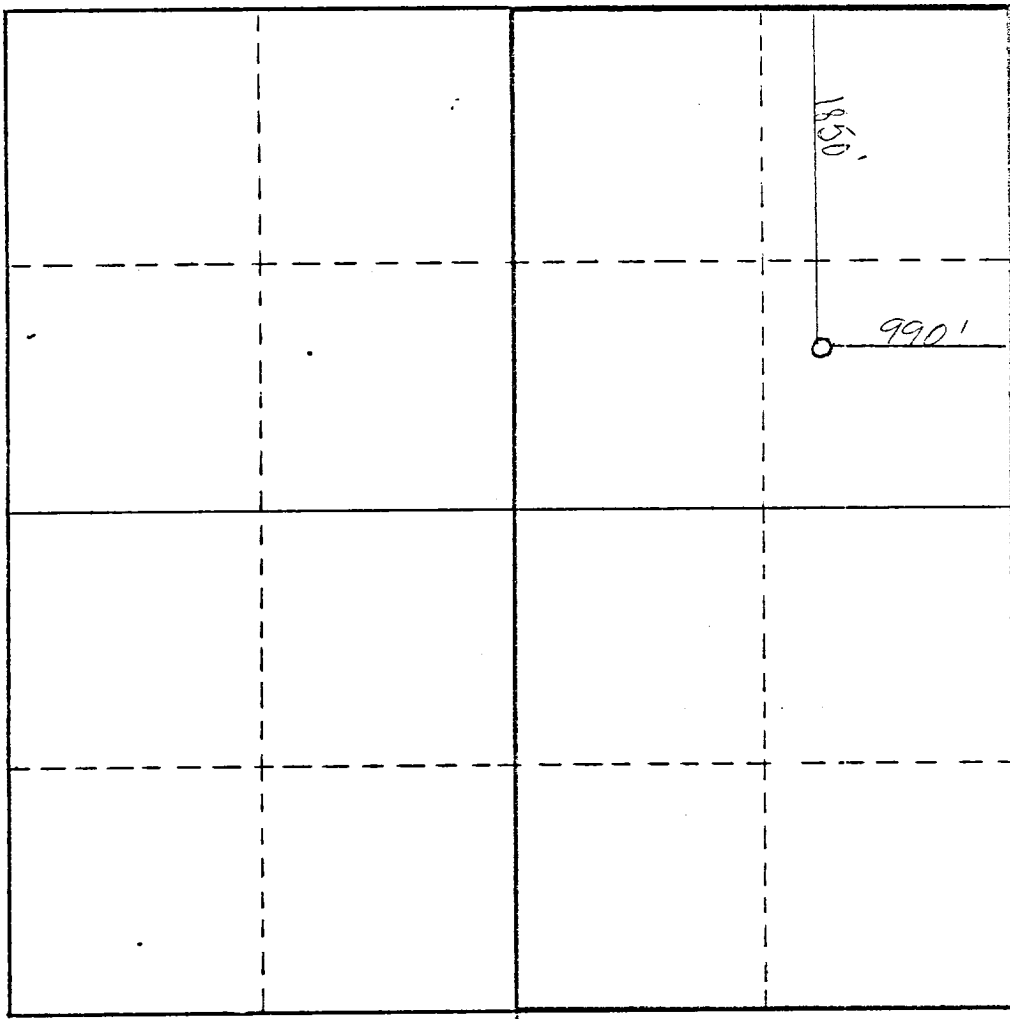
Operator TENNECO OIL COMPANY			Lease FLORANCE		Well No. 36
Unit Letter H	Section 3	Township 30N	Range 8W	County San Juan	
Actual Footage Location of Well: 1850 feet from the North line and 990 feet from the East line					
Ground Level Elev. 6284	Producing Formation Basin Dakota		Pool Basin Dakota	Dedicated Acreage: E/2 323.20 Acres	

1. Outline the acreage dedicated to the subject well by colored pencil or hachure marks on the plat below.
2. If more than one lease is dedicated to the well, outline each and identify the ownership thereof (both working interest and royalty).
3. If more than one lease of different ownership is dedicated to the well, have the interests of all owners been consolidated by communitization, unitization, force-pooling, etc?

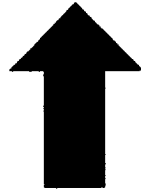
☐ Yes ☐ No If answer is "yes," type of consolidation _____

If answer is "no," list the owners and tract descriptions which have actually been consolidated. (Use reverse side of this form if necessary.) _____

No allowable will be assigned to the well until all interests have been consolidated (by communitization, unitization, forced-pooling, or otherwise) or until a non-standard unit, eliminating such interests, has been approved by the Commission.



CERTIFICATION	
I hereby certify that the information contained herein is true and complete to the best of my knowledge and belief.	
<i>M. K. Wagner</i>	
Name	M. K. Wagner
Position	Tenneco Oil Company
Company	Tenneco Oil Company
Date	October 4, 1967
I hereby certify that the well location shown on this plat was plotted from field notes of actual surveys made by me or under my supervision, and that the same is true and correct to the best of my knowledge and belief.	
Date Surveyed	
Registered Professional Engineer and/or Land Surveyor	
Certificate No.	



LTR



Job separation sheet

UNITED STATES
DEPARTMENT OF THE INTERIOR
GEOLOGICAL SURVEYSUBMIT IN TRIPLICATE*
(Other instructions on re-
verse side)Form approved.
Budget Bureau No. 42-R1424.

5. LEASE DESIGNATION AND SERIAL NO.

NM 012711

6. IF INDIAN, ALLOTTEE OR TRIBE NAME

7. UNIT AGREEMENT NAME

8. FARM OR LEASE NAME

Florance

9. WELL NO.

36

10. FIELD AND POOL, OR WILDCAT

Dual

Blanco-Mesaverde Basin Dakota
11. SEC., T., R., M., OR BLK. AND
SURVEY OR AREA

Sec 3, T30N R8W

12. COUNTY OR PARISH 18. STATE

San Juan

New Mexico

SUNDRY NOTICES AND REPORTS ON WELLS

(Do not use this form for proposals to drill or to deepen or plug back to a different reservoir.
Use "APPLICATION FOR PERMIT—" for such proposals.)1. OIL WELL ☐ GAS WELL ☐ OTHER ☒ Deepen to Dakota and Dual

2. NAME OF OPERATOR

TENNECO OIL COMPANY

3. ADDRESS OF OPERATOR

P. O. BOX 1714, DURANGO, COLORADO

4. LOCATION OF WELL (Report location clearly and in accordance with any State requirements.)
See also space 17 below.)
At surfaceU. S. GEOLOGICAL SURVEY
FARMINGTON, N. M.

14. PERMIT NO.

15. ELEVATIONS (Show whether DF, RT, GR, etc.)

6272 GR

16.

Check Appropriate Box To Indicate Nature of Notice, Report, or Other Data

NOTICE OF INTENTION TO:

TEST WATER SHUT-OFF ☐FRACTURE TREAT ☐SHOOT OR ACIDIZE ☐REPAIR WELL ☐(Other) ☐PULL OR ALTER CASING ☐MULTIPLE COMPLETE ☐ABANDON* ☐CHANGE PLANS ☐

SUBSEQUENT REPORT OF:

WATER SHUT-OFF ☒FRACTURE TREATMENT ☒SHOOTING OR ACIDIZING ☒(Other) Deepen to Dakota and Dual ☒REPAIRING WELL ☐ALTERING CASING ☐ABANDONMENT* ☐(Note: Report results of multiple completion on Well
Completion or Recompletion Report and Log form.)

17. DESCRIBE PROPOSED OR COMPLETED OPERATIONS (Clearly state all pertinent details, and give pertinent dates, including estimated date of starting any proposed work. If well is directionally drilled, give subsurface locations and measured and true vertical depths for all markers and zones pertinent to this work.)*

10/5/65 Rig up pull 1 1/2" tbg. 5700 TD, 5600PB. Set cement retainer at 4700. Cement open hole 4898-5600 w/150 sx cement. Re-cemented w/50 sx. Cut off 4 1/2 csg at 3990' Pulled 122 jets 4 1/2 9.5 csg, total pulled 3981. Set 50 sx cement plug from 4000' to 3700'. WOC. Set BP at 3148. Squeezed hole at 1050' w/150 sx. Csg tested OK. Drilled cement and drilled to TD 7830 on 10/16/65. Logged. 7810 PB. Ran 246 jets 4 1/2 10.5# and 11.6# J-55 casing set 7830. Cement 1st stage thru shoe w/275 sx. 2nd stage thru collar set at 4504 w/225 sx. WOC. Cleaned out to 7810. Perf 7722-7754. Acidized perfs w/500 gallons. Set Packer at 7685. Acidized perfs w/1600 gallons acid. Perf 7720-50 acidized w/500 gallons. Acidized perfs 7674-96 w/1000 gallons acid. Frac 7674-7750 w/ 92,000 gallons 1% KCL wtr, and 57,000 lbs sand. Perf 7574-7625. Frac w/20,000 gallons KCL wtr and 12,000 lbs sand. Frac perfs 7574-7625 w/16,000 gallons water and 12,000 lbs sand. Re-perf 7568-7625 acidized w/836 gallons and frac w/28,000 gallons water and 14,000 lbs sand. Set BP at 5565. Perf 5236-5517. Frac perfs w/102,000 gallons water and 78,000 lbs sd. Set CIBP at 5200. Perfs 5021-5121 w/2 HPF. Frac perfs w/82,000 gallons water and 80,000 lbs sd. Drilled out CIBP. Cleaned out to 7810 PBTD. Ran prod. packer. Set at 7510. Ran 236 jets 2 3/8 Seal Lock tbg. Set in packer 7510'. Installed tree, released rig, 10/24/65. Job complete. Will conduct packer leakage and deliverability tests. Dakota SI.

18. I hereby certify that the foregoing is true and correct

SIGNED

Harold C. Nichols

(This space for Federal or State office use)

TITLE Sr. Production Comm.

OIL CON. 60Mk

DIST. 3

DATE November 4, 1965

APPROVED BY

TITLE

DATE

CONDITIONS OF APPROVAL, IF ANY:

*See Instructions on Reverse Side

Distribution: 5 to USGS
1 to Continental