

UNITED STATES
DEPARTMENT OF THE INTERIOR
GEOLOGICAL SURVEY

APPLICATION FOR PERMIT TO DRILL, DEEPEN, OR PLUG BACK

1A. TYPE OF WORK

DRILL ☒DEEPEN ☐PLUG BACK ☐

B. TYPE OF WELL

OIL
WELL ☐GAS
WELL ☒OTHER ☐SINGLE
ZONE ☒MULTIPLE
ZONE ☐

2. NAME OF OPERATOR

Tenneco Oil Company

3. ADDRESS OF OPERATOR

P. O. Box 1714 - Durango, Colorado

4. LOCATION OF WELL (Report location clearly and in accordance with any State requirements.)*

At surface

990' FSL, 1650' FEL

Unit 0

At proposed prod. zone

14. DISTANCE IN MILES AND DIRECTION FROM NEAREST TOWN OR POST OFFICE*

15. DISTANCE FROM PROPOSED*

LOCATION TO NEAREST
PROPERTY OR LEASE LINE, FT.
(Also to nearest drig. unit line, if any)

16. NO. OF ACRES IN LEASE

160

17. NO. OF ACRES ASSIGNED
TO THIS WELL

160

18. DISTANCE FROM PROPOSED LOCATION*
TO NEAREST WELL, DRILLING, COMPLETED,
OR APPLIED FOR, ON THIS LEASE, FT.

19. PROPOSED DEPTH

3000

20. ROTARY OR CABLE TOOLS

Rotary

21. ELEVATIONS (Show whether DF, RT, GR, etc.)

6410' GR

22. APPROX. DATE WORK WILL START*

May 23, 1966

23.

PROPOSED CASING AND CEMENTING PROGRAM

SIZE OF HOLE	SIZE OF CASING	WEIGHT PER FOOT	SETTING DEPTH	QUANTITY OF CEMENT
12-1/4"	8-5/8"	20#	150	Circulate to surface
7-7/8"	3-1/2"	7.7# 10R	3000	Circulate cement to surface

We plan to rig up, drill with Rotary to approximate T.D. of 3000'. Run casing as shown above. Log. Perforate and frac and install well head and conduct deliverability tests.

U. S. GEOLOGICAL SURVEY
FARMINGTON, N. M.RECEIVED
MAY 18 1966
OIL CON. COM.
DIST. 2

IN ABOVE SPACE DESCRIBE PROPOSED PROGRAM: If proposal is to deepen or plug back, give data on present productive zone and proposed new productive zone. If proposal is to drill or deepen directionally, give pertinent data on subsurface locations and measured and true vertical depths. Give blowout preventer program, if any.

24.

SIGNED

Harold C. Nichols

TITLE

Senior Production Clerk

DATE

May 16, 1966

(This space for Federal or State office use)

PERMIT NO.

APPROVAL DATE

APPROVED BY

TITLE

CONDITIONS OF APPROVAL, IF ANY:

Distribution:

5 - USGS
1 - Continental
1 - File

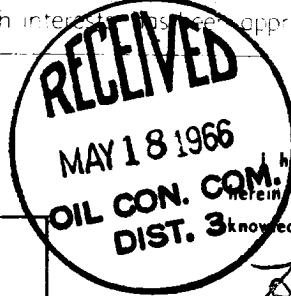
*See Instructions On Reverse Side

**NEW MEXICO OIL CONSERVATION COMMISSION
WELL LOCATION AND ACERAGE DEDICATION PLAT**

All distances must be from the outer boundaries of the Section

Operator TENNECO OIL COMPANY		Lease FLORENCE		Well No. 71	
Unit Letter C	Section 24	Township 29N	Range 9W	County San Juan	
Actual Footage Location of Well: 990 feet from the south line and 1650 feet from the east line					
Ground Level Elev. 6410 ungraded		Producing Formation Blanco Pictured Cliffs		Dedicated Acreage 160	
		Blanco Pictured Cliffs		SE/4	

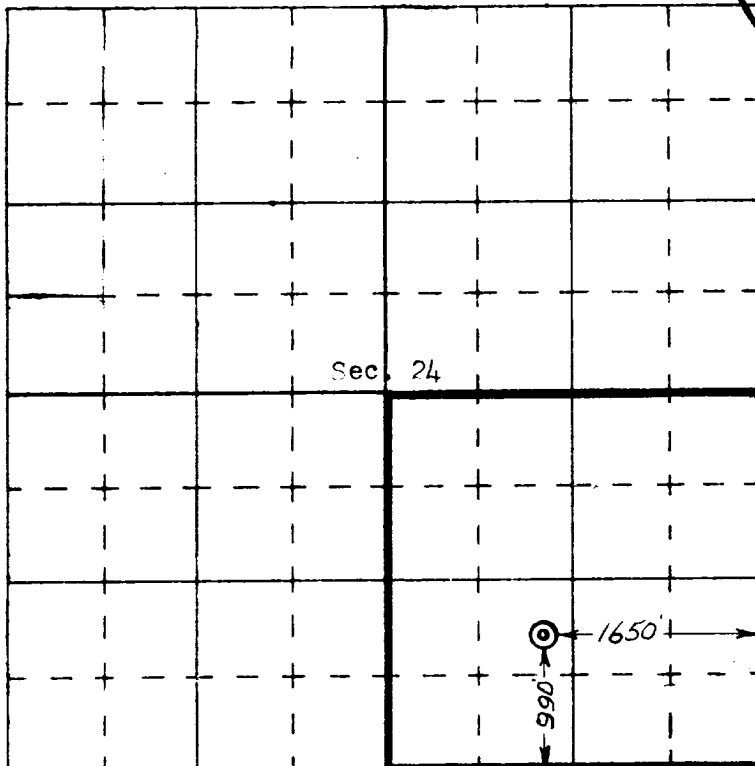
1. Outline the acreage dedicated to the subject well by colored pencil or machine marks on the plat below.
2. If more than one lease is dedicated to the well, outline each and identify the ownership thereof (both as to working interest and royalty).
3. If more than one lease of different ownership is dedicated to the well, have the interests of all owners been consolidated by communitization, unitization, force-pooling, etc?
☐ Yes ☐ No If answer is "yes," type of consolidation: _____
 If answer is "no," list the owners and tract descriptions which have actually consolidated (Use reverse side of this form if necessary): _____
- No allowable will be assigned to the well until all interests have been consolidated (by communitization, unitization, force-pooling, or otherwise) or until a non standard unit, eliminating such interest, has been approved by the Commission.



CERTIFICATION

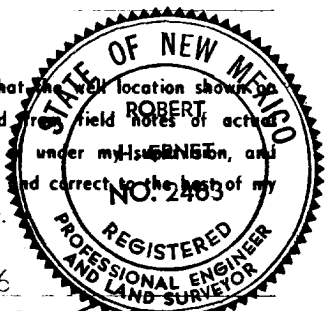
I hereby certify that the information contained herein is true and complete to the best of my knowledge and belief.

Harold C. Nichols
 Name Harold C. Nichols
 Position Senior Production Clerk
 Company Tenneco Oil Company
 Date May 16, 1966



N
↑

I hereby certify that the well location shown on this plat was plotted from field notes of actual surveys made by me or under my supervision, and that the same is true and correct to the best of my knowledge and belief.



6 April 1966
 Date Surveyed
Robert H. Ernst
 Registered Professional Engineer and/or Land Surveyor

Robert H. Ernst
N. Mex. P.E. & L.S. 2463
 Certificate No. _____