

NUMBER OF COPIES RECEIVED	
DISTRIBUTION	
SANTA FE	1
FILE	✓
U.S.G.S.	2
LAND OFFICE	
TRANSPORTER	
OIL GAS	
PRODUCTION OFFICE	
OPERATOR	1

NEW MEXICO OIL CONSERVATION COMMISSION
Santa Fe, New Mexico

Form C-101
 Revised (12/1/55)

NOTICE OF INTENTION TO DRILL

Notice must be given to the District Office of the Oil Conservation Commission and approval obtained before drilling or recompletion begins. If changes in the proposed plan are considered advisable, a copy of this notice showing such changes will be returned to the sender. Submit this notice in **QUINTUPLICATE**. One copy will be returned following approval. See additional instructions in Rules and Regulations of the Commission. If State Land submit 6 Copies Attach Form C-128 in triplicate to first 3 copies of form C-101

Farmington, New Mexico
 (Place)

10-30-64
 (Date)

OIL CONSERVATION COMMISSION
 SANTA FE, NEW MEXICO

Gentlemen:

You are hereby notified that it is our intention to commence the Drilling of a well to be known as

Pioneer Production Corp.

(Company, or Operator)

Farmington C. Unit
 (Lease)

Well No. 1, in I The well is

located 1625 feet from the South Line line and 1250 feet from the

West line of Section 15, T. 29 North, R. 13 West, NMPM.

(GIVE LOCATION FROM SECTION LINE) Basin Dakota Pool, San Juan County

1625' fsl to 1250' fwl

D	C	B	A
E	F	G	H
L	K	J	I
M	N	O	P

If State Land the Oil and Gas Lease is No.

If patented land the owner is O. D. Chapman

Address Escrito, New Mexico

We propose to drill well with drilling equipment as follows: Rotary Equipment

surface to T. D.

The status of plugging bond is State wide

Drilling Contractor Exeter Drilling Co.

We intend to complete this well in the Dakota Formation formation at an approximate depth of 6000 feet.

CASING PROGRAM

We propose to use the following strings of Casing and to cement them as indicated:

Size of Hole	Size of Casing	Weight per Foot	New or Second Hand	Depth	Sacks Cement
<u>12 1/4"</u>	<u>8 5/8"</u>	<u>24#</u>	<u>New</u>	<u>300'</u>	<u>175 Sx</u>
<u>7 7/8"</u>	<u>4 1/2"</u>	<u>19.5#</u>	<u>New</u>	<u>6000'</u>	<u>150 Sx</u>

If changes in the above plans become advisable we will notify you immediately.

ADDITIONAL INFORMATION (If recompletion give full details of proposed plan of work.)

Approved.....
 Except as follows:

Pictured Ch. Ffs Formation must
be Covered with Cement

OIL CONSERVATION COMMISSION

By Emmy C. [Signature]

Sincerely yours,

Pioneer Production Corp.

(Company or Operator)

By Original signed by T. A. Dugan

Position Consulting Engineer

Send Communications regarding well to

Name T. A. Dugan

Address P. O. Box 234, Farmington, N. M.

RECEIVED

NOV 5 1964

OIL CON. COM.
 DIST. 3

NEW MEXICO OIL CONSERVATION COMMISSION

Well Location and Acreage Dedication Plat

Date 10-30-64

Section A.

Operator PIONEER PRODUCTION CORPORATION Lease Farmington "NW" Unit
 Well No. 1 Unit Letter L Section 15 Township 29 NORTH Range 13 WEST NMPM
 Located 1625 Feet From the SOUTH Line, 1250 Feet From the WEST Line
 County San Juan G. L. Elevation 5286.0 Dedicated Acreage 320 Acres
 Name of Producing Formation Dakota Pool Basin Dakota

1. Is the Operator the only owner in the dedicated acreage outlined on the plat below?

Yes ☒ No ☐2. If the answer to question one is "no", have the interests of all the owners been consolidated by communitization agreement or otherwise? Yes ☐ No ☐ If answer is "yes", Type of Consolidation.

3. If the answer to question two is "no", list all the owners and their respective interests below:

Owner

Land Description

Section B.

This is to certify that the information
 in Section A above is true and complete
 to the best of my knowledge and belief.

Pioneer Production Corp.

(Operator)

Original signed by T. A. Dugan

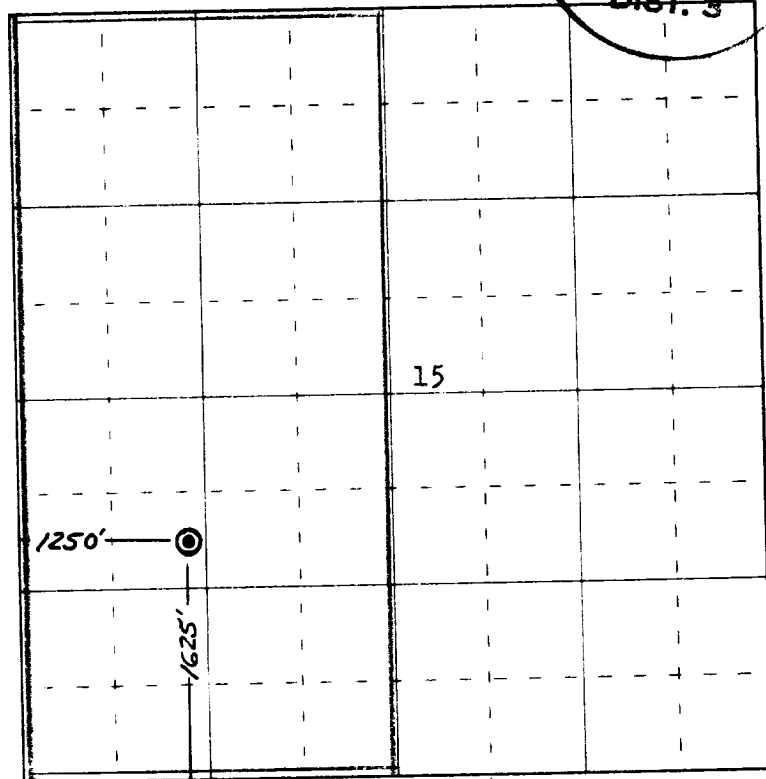
(Representative)

T. A. Dugan

(Address)

Box 234Farmington, New Mexico

Note: All distances must be from outer boundaries of section.



0 330 660 990 1320 1650 1980 2310 2640 2000 1500 1000 500 0

Scale 4 inches equal 1 mile



(Seal)

Farmington, New Mexico

This is to certify that the above plat was prepared from field notes of actual surveys
 made by me or under my supervision and that the same are true and correct to the best
 of my knowledge and belief.

Date Surveyed 8 January 1964

James P. Lease
 Registered Professional Engineer and/or Land Surveyor
 James P. Lease, N. Mex. Reg. No. 1463
 San Juan Engineering Company