

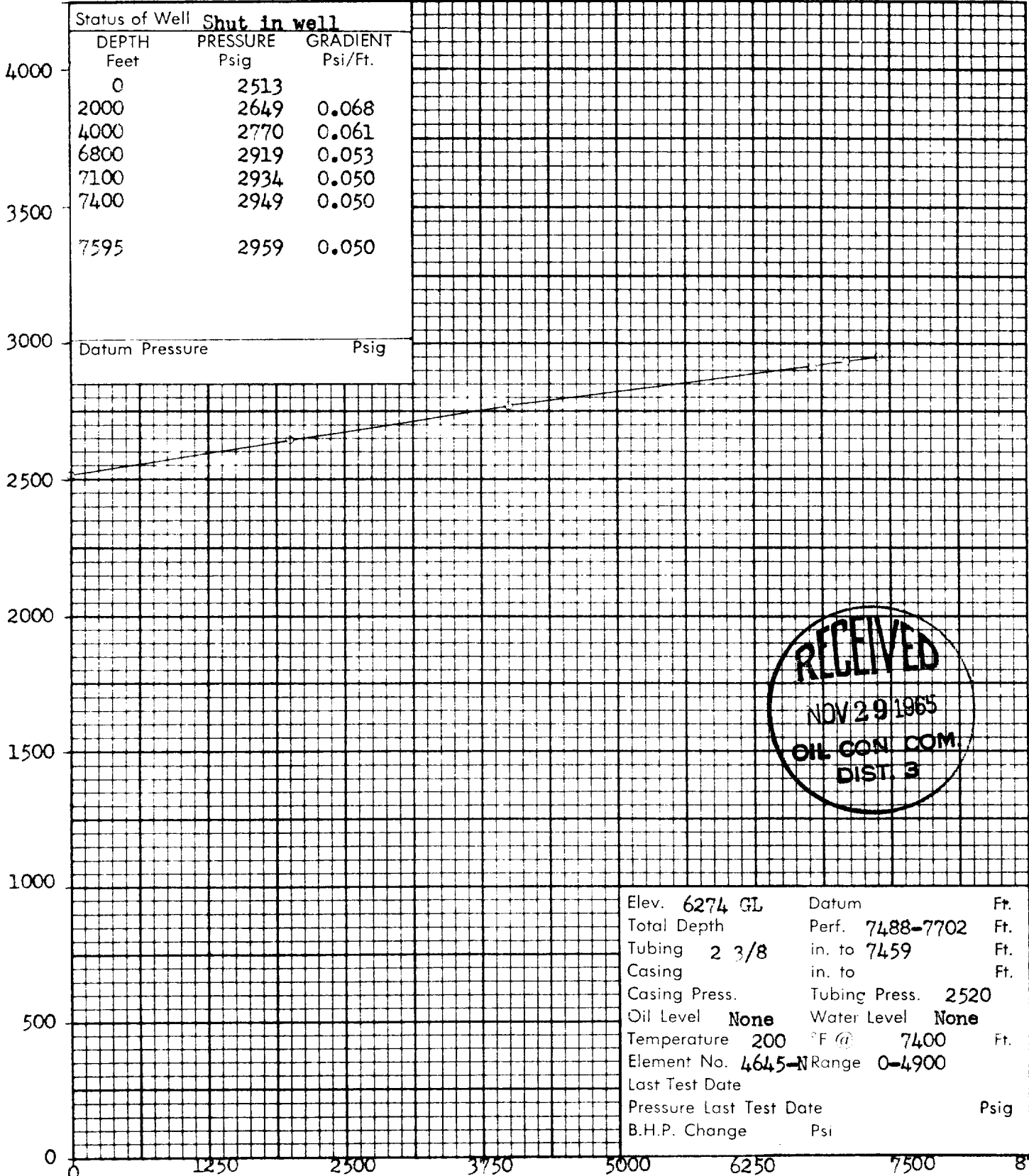


*A-5-30-8*

Company TENNECO OIL COMPANY Lease MOORE Well No. 6  
 Field BASIN DAKOTA County SAN JUAN State NEW MEXICO  
 Formation DAKOTA Test Date AUGUST 20, 1965

Status of Well <b>Shut in well</b>		
DEPTH Feet	PRESSURE Psig	GRADIENT Psi/Ft.
0	2513	
2000	2649	0.068
4000	2770	0.061
6800	2919	0.053
7100	2934	0.050
7400	2949	0.050
7595	2959	0.050
Datum Pressure		Psig

PRESSURE POUNDS PER SQUARE INCH GAUGE



**RECEIVED**  
 NOV 29 1965  
 OIL CON. COM.  
 DIST. 3

Elev. 6274 GL	Datum	Ft.
Total Depth	Perf. 7488-7702	Ft.
Tubing 2 3/8	in. to 7459	Ft.
Casing	in. to	Ft.
Casing Press.	Tubing Press. 2520	
Oil Level None	Water Level None	
Temperature 200 °F @	7400	Ft.
Element No. 4645-N	Range 0-4900	
Last Test Date		
Pressure Last Test Date		Psig
B.H.P. Change	Psi	

DEPTH: FEET