

NEW MEXICO OIL CONSERVATION COMMISSION
WELL LOCATION AND ACERAGE DEDICATION PLAT

RECEIVED

All distances must be from the outer boundaries of the Section

Operator The SHIPROCK CORPORATION		Lease Navajo 17-6		U. S. GEOLOGICAL SURVEY FARMINGTON, N. M.	
Unit Letter G	Section 17	Township 29 NORTH	Range 18 WEST	County SAN JUAN	
Actual Footage Location of Well: 2292 feet from the NORTH line and 1347 feet from the EAST line					
Ground Level Elev. 5200.0	Producing Formation Gallup	Pool Shiprock-Gallup	Dedicated Acreage: 40 Joint Acres		

1. Outline the acreage dedicated to the subject well by colored pencil or hachure marks on the plat below.
2. If more than one lease is dedicated to the well, outline each and identify the ownership thereof (both as to working interest and royalty),
3. If more than one lease of different ownership is dedicated to the well, have the interests of all owners been consolidated by communitization, unitization, force-pooling, etc.?

() Yes () No If answer is "yes," type of consolidation _____

If answer is "no," list the owners and tract descriptions which have actually consolidated. (Use reverse side of this form if necessary.) _____

No allowable will be assigned to the well until all interests have been consolidated (by communitization, unitization, forced-pooling, or otherwise) or until a non standard unit, eliminating such interests, has been approved by the Commission.

RECEIVED
AUG 8 1969
OIL CON. COM.
DIST. 3

CERTIFICATION

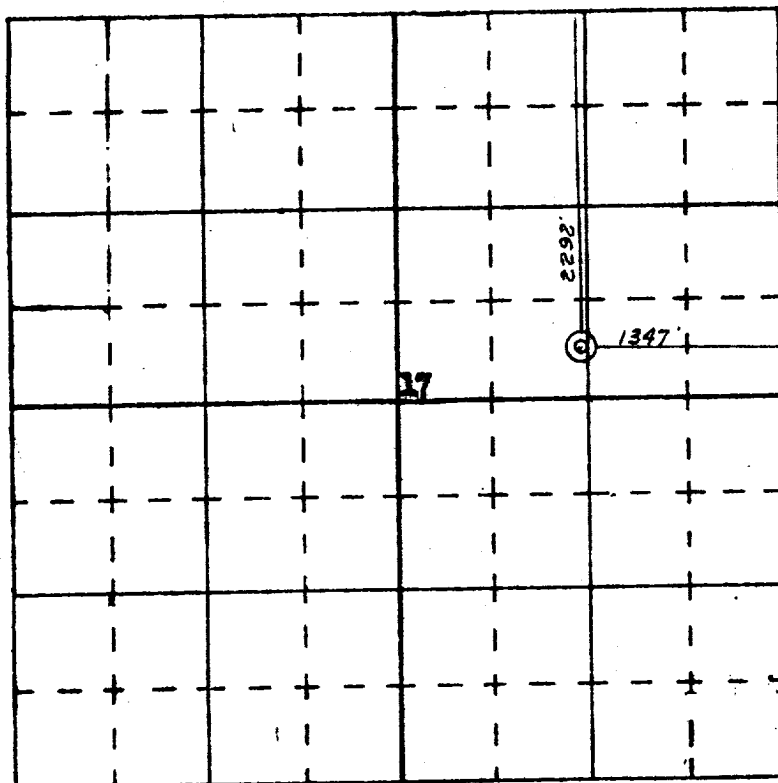
I hereby certify that the information contained herein is true and complete to the best of my knowledge and belief.

Name *H. F. Sturges*
Position *Prod. Supt.*
Company *Shiprock Corp.*
Date *8/6/69*

I hereby certify that the well location shown on this plat was plotted from field notes of actual surveys made by me or under my supervision, and that the same is true and correct to the best of my knowledge and belief.

Date Surveyed *4 August 1969*
[Signature]
By _____
Checked by _____

Certificate No. *1169*



SCALE—4 INCHES EQUALS 1 MILE

SAN JUAN ENGINEERING COMPANY, FARMINGTON, N. M.