

UNITED STATES
DEPARTMENT OF THE INTERIOR
GEOLOGICAL SURVEY

30-045-21866

APPLICATION FOR PERMIT TO DRILL, DEEPEN, OR PLUG BACK

1a. TYPE OF WORK
DRILL ☒ DEEPEN ☐ PLUG BACK ☐

b. TYPE OF WELL
OIL WELL ☐ GAS WELL ☒ OTHER ☐
SINGLE ZONE ☒ MULTIPLE ZONE ☐

2. NAME OF OPERATOR
Southern Union Production Company

3. ADDRESS OF OPERATOR
P. O. Box 808, Farmington, New Mexico 87401

4. LOCATION OF WELL (Report location clearly and in accordance with any State requirements.*)
At surface
790 feet from the North line and 790 feet from the East line.
At proposed prod. zone Same as above.

14. DISTANCE IN MILES AND DIRECTION FROM NEAREST TOWN OR POST OFFICE*

15. DISTANCE FROM PROPOSED* 790' Lease
LOCATION TO NEAREST
PROPERTY OR LEASE LINE, FT.
(Also to nearest drlg. unit line, if any) 790' Unit

16. NO. OF ACRES IN LEASE
1183.91

17. NO. OF ACRES ASSIGNED
TO THIS WELL
160 (160/4)

18. DISTANCE FROM PROPOSED LOCATION*
TO NEAREST WELL, DRILLING, COMPLETED,
OR APPLIED FOR, ON THIS LEASE, FT. 200 feet

19. PROPOSED DEPTH
3000 Ft.

20. ROTARY OR CABLE TOOLS
Rotary

21. ELEVATIONS (Show whether DF, RT, GR, etc.)
5631 ft. GR.

22. APPROX. DATE WORK WILL START*
9/15/75

23. PROPOSED CASING AND CEMENTING PROGRAM

SIZE OF HOLE	SIZE OF CASING	WEIGHT PER FOOT	SETTING DEPTH	QUANTITY OF CEMENT
12-1/4"	7-5/8"	26.40	130 Ft.	130 cu. ft.
6-3/4"	2-7/8"	6.40	3000 Ft.	700 cu. ft.

We propose to drill a Chacra gas well to a total depth of approx. 3000 feet.
The zone will be sand water fraced to stimulate production.



RECEIVED

AUG 18 1975

U. S. GEOLOGICAL SURVEY
FARMINGTON, N. M.

IN ABOVE SPACE DESCRIBE PROPOSED PROGRAM: If proposal is to deepen or plug back, give data on present productive zone and proposed new productive zone. If proposal is to drill or deepen directionally, give pertinent data on subsurface locations and measured and true vertical depths. Give blowout preventer program, if any.

24. Original Signed By
SIGNED Jerry L. Lee Jerry L. Lee TITLE Area Engineer DATE August 14, 1975

(This space for Federal or State office use)

PERMIT NO. _____ APPROVAL DATE _____

APPROVED BY _____ TITLE _____ DATE _____
CONDITIONS OF APPROVAL, IF ANY:

Chief

*See Instructions On Reverse Side

NEW MEXICO OIL CONSERVATION COMMISSION
WELL LOCATION AND ACREAGE DEDICATION PLAT

Supersedes O-118
1-10-1964

All distances must be from the outer boundaries of the Section

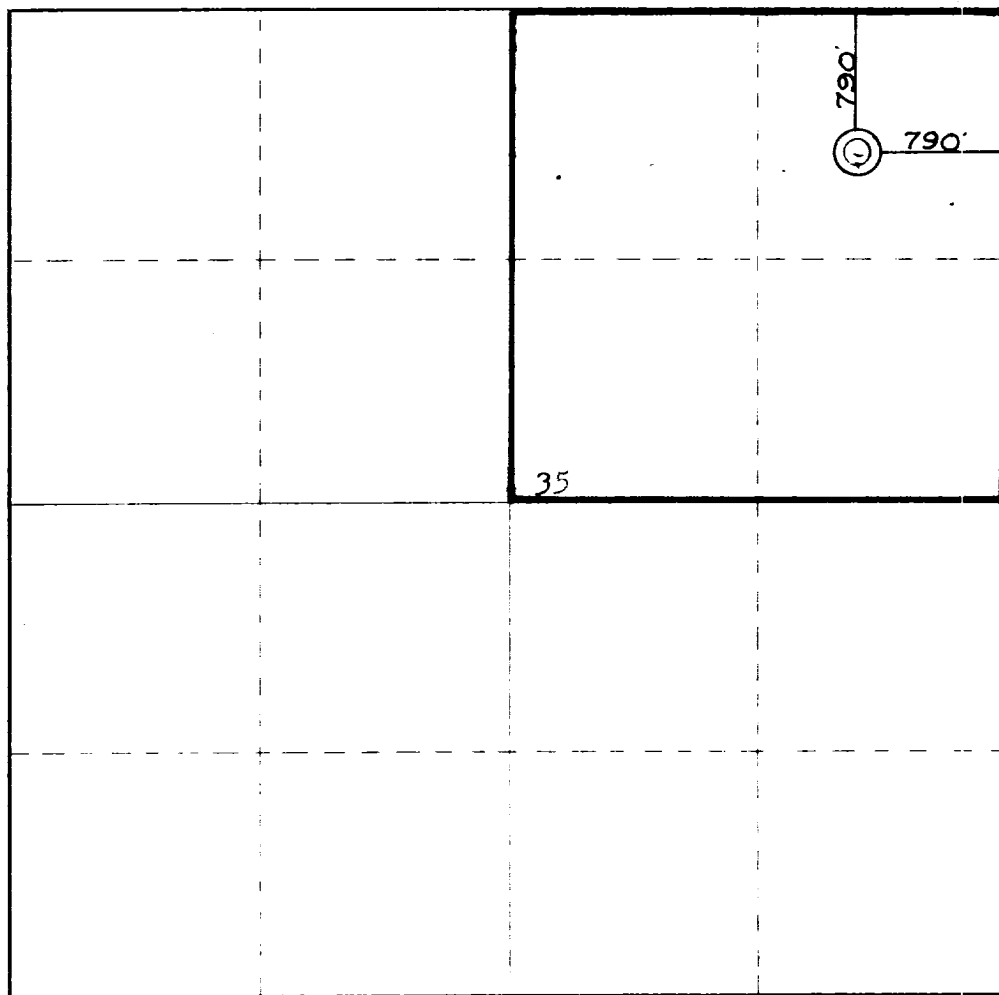
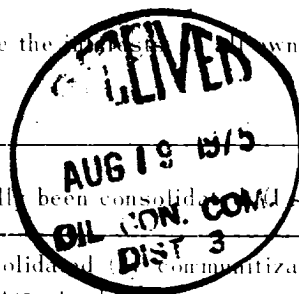
SOUTHERN UNION PRODUCTION CO.,			CONGRESS		8
Section	Range	County	Section	Range	County
A	35	29 NORTH	11 WEST	SAN JUAN	
Actual Section Containing Well:					
790	Section	NORTH	Line	790	Section
5631	Section	CHACTA	Line	13/loom field	Section
			Ext.	160	

1. Outline the acreage dedicated to the subject well by colored pencil or hatchure marks on the plat below.
2. If more than one lease is dedicated to the well, outline each and identify the ownership thereof (both as to working interest and royalty).
3. If more than one lease of different ownership is dedicated to the well, have the leases been consolidated by communitization, unitization, force-pooling, etc?

☐ Yes ☒ No If answer is "yes," type of consolidation _____

If answer is "no," list the owners and tract descriptions which have actually been consolidated (Use reverse side of this form if necessary.) _____

No allowable will be assigned to the well until all interests have been consolidated (by communitization, unitization, forced-pooling, or otherwise) or until a non-standard unit, eliminating such interests, has been approved by the Commission.



CERTIFICATION

I hereby certify that the information contained herein is true and complete to the best of my knowledge and belief.

Original Signed By
Jerry L. Lee

Jerry L. Lee

Area Engineer

Southern Union Production

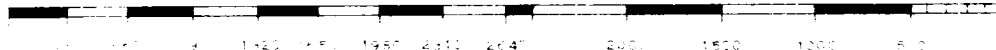
August 14, 1975

I hereby certify that the well location shown on this plat was plotted from field notes of actual surveys made by me or under my supervision, and that the same is true and correct to the best of my knowledge and belief.

13 August 1975

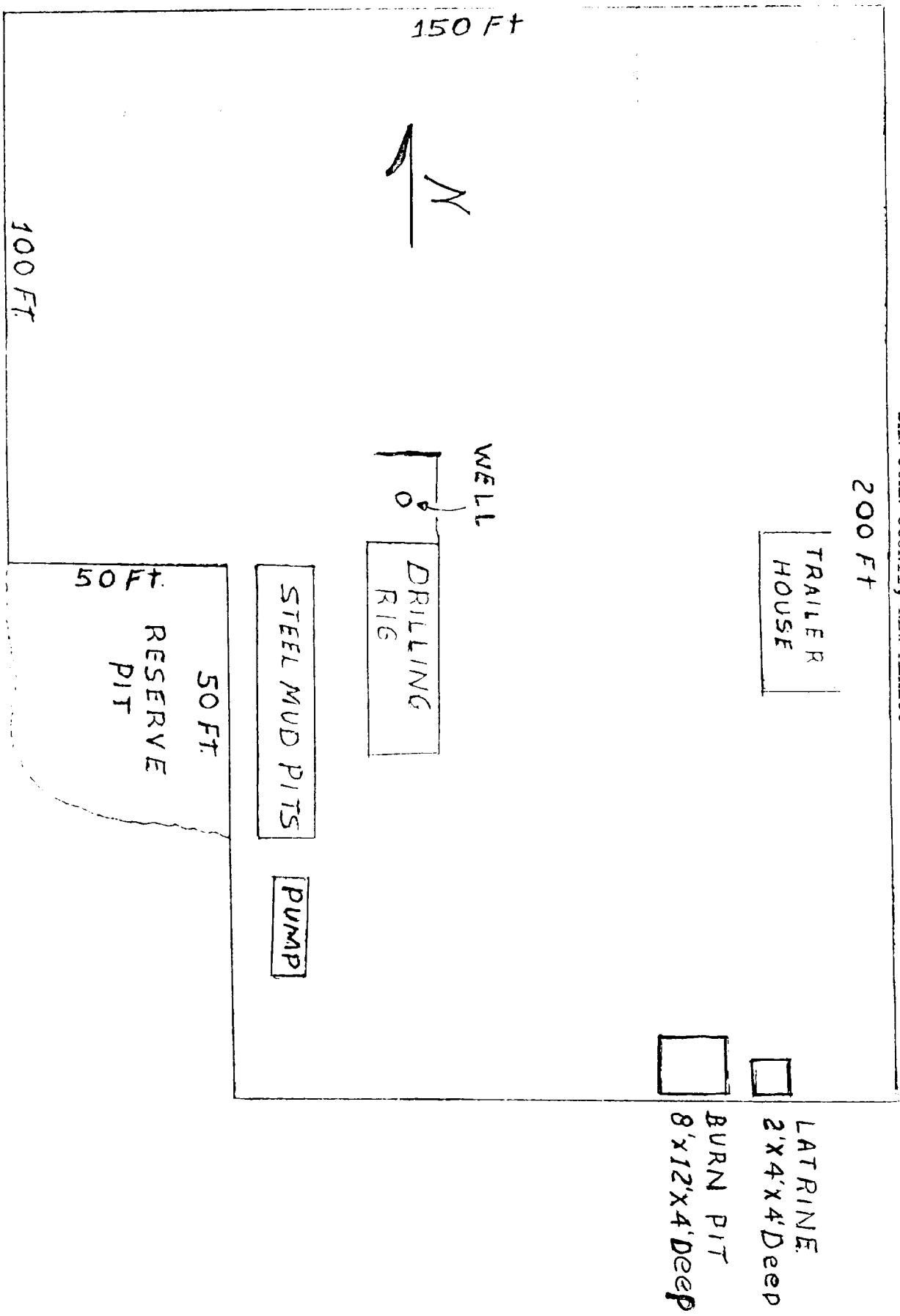
James P. Leese
James P. Leese

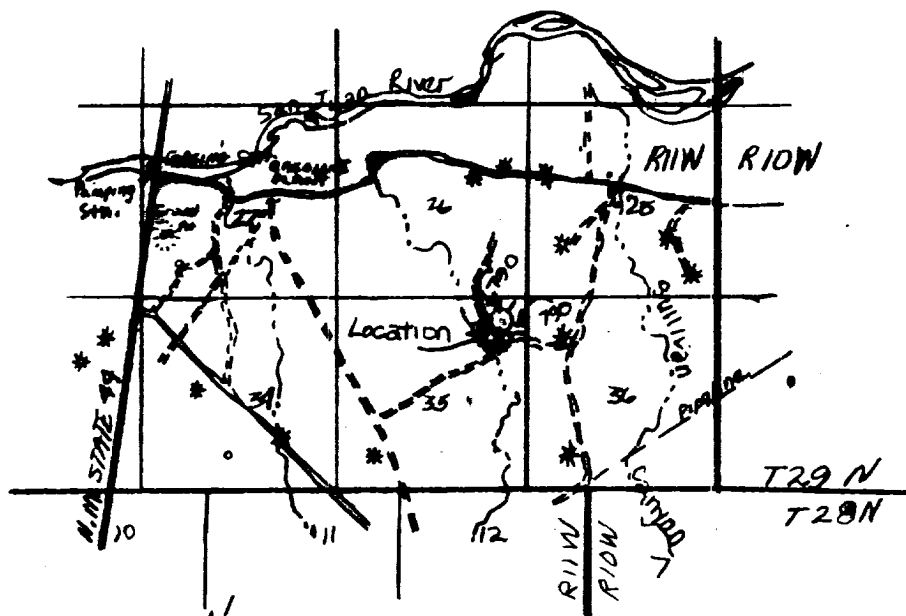
1403



SOUTHERN UNION PRODUCTION COMPANY
CONGRESS NO. 8

790/N line & 790/E line
Sec. 35, T-29N, R-11W
SAN JUAN COUNTY, NEW MEXICO





1" = 6000'

Vicinity map for
Southern Union Production Co.

Showing well location in the
NE 1/4, NE 1/4, Sec. 35, T29N,
R11W, N.M.P.M., San Juan County
New Mexico.

Scale: 1" = 6000' Date: 14 August, 1975

San Juan Engineering Co.

SOUTHERN UNION PRODUCTION COMPANY

POST OFFICE BOX 808
FARMINGTON, NEW MEXICO 87401

August 14, 1975

United States Geological Survey
P. O. Box 959
Farmington, New Mexico 87401

Attention: Mr. P. T. McGrath

Dear Sir:

Southern Union Production Company proposes to drill its Congress No. 8 Chacra well located 790 feet from the North line and 790 feet from the East line of Section 35, Township 29 North, Range 11 West, San Juan County, New Mexico.

Attached are maps showing the following data:

1. Existing roads.
2. Planned access roads.
3. Location of existing wells.
4. Lateral roads to well location.
5. A map is attached showing the location of the rig, mud tanks, reserve pit, burn pit, pipe racks, etc. The access road and location will be compacted.
6. Drilling and completion water will be obtained from the San Juan river.
7. Waste will be disposed of by being placed in the reserve pit and buried. Some will be burned in burn pit which will be covered after the well has been completed.
8. There will be no camp at or near the proposed well site.
9. There will be no airstrip.
10. The location of tank batteries and flow lines are not presently known. After the well has been drilled and the location has been cleaned this equipment will then be installed on the existing location. It is requested that a subsequent map be submitted after determining the exact location.
11. After the well is completed the location will be cleaned and bladed. The reserve pit will be fenced until it has dried and then it will be filled and restored to its natural state. The access road will be left as is for well maintenance.
12. The location is relatively flat. Range grass is the predominant vegetation.

Yours very truly,

SOUTHERN UNION PRODUCTION COMPANY
Original Signed By
Jerry L. Lee
Jerry L. Lee
Area Engineer

JLL:ml