

UNITED STATES
DEPARTMENT OF THE INTERIOR
BUREAU OF LAND MANAGEMENT

APPLICATION FOR PERMIT TO DRILL, DEEPEN, OR PLUG BACK

1a. TYPE OF WORK PLUG BACK	5. LEASE NUMBER SF-080781
1b. TYPE OF WELL GAS	6. IF INDIAN, ALL. OR TRIBE NAME
2. OPERATOR SOUTHLAND ROYALTY COMPANY	7. UNIT AGREEMENT NAME
3. ADDRESS & PHONE NO. OF OPERATOR P.O. BOX 4289 FARMINGTON, NM 87499 (505) 326-9700	8. FARM OR LEASE NAME CAIN
4. LOCATION OF WELL 1610' FSL, 810' FEL	9. WELL NO. #3R
14. DISTANCE IN MILES FROM NEAREST TOWN	10. FIELD, POOL, OR WILDCAT BASIN FRUITLAND COAL
15. DISTANCE FROM PROPOSED LOCATION TO NEAREST PROPERTY OR LEASE LINE.	11. SEC. T. R. M OR BLK. I SEC. 30, T29N, R09W
16. ACRES IN LEASE	12. COUNTY SAN JUAN
17. ACRES ASSIGNED TO WELL 268.42	13. STATE NM
18. DISTANCE FROM PROPOSED LOCATION TO NEAREST WELL DR. COMPL., OR APPLIED FOR ON THIS LEASE.	19. PROPOSED DEPTH
20. ROTARY OR CABLE TOOLS	
21. ELEVATIONS (DF, FT, GR, ETC.) 5701' GR	22. APPROX. DATE WORK WILL START

RECEIVED
OCT 4 1990
OIL CON. DIV
DIST. 3

23. PROPOSED CASING AND CEMENTING PROGRAM

*SEE OPERATIONS PLAN

24. AUTHORIZED BY: [Signature] (CJS) DATE 9-21-90
REGULATORY AFFAIRS DATE

PERMIT NO. _____ APPROVAL DATE _____

APPROVED BY _____ TITLE _____ DATE _____

NOTE: THIS FORMAT IS ISSUED IN LIEU OF US BLM FORM 3160-3.
(NO ADDITIONAL DIRT WORK WILL BE REQUIRED)

APPROVED
SEP 28 1990
[Signature] AREA MANAGER

Held 0-104 For 0707 NMCOOD

NEW MEXICO OIL CONSERVATION COMMISS.
WELL LOCATION AND ACREAGE DEDICATION PLAT

Form C-102
Supersedes C-128
Effective 1-1-55

All distances must be from the outer boundaries of the Section.

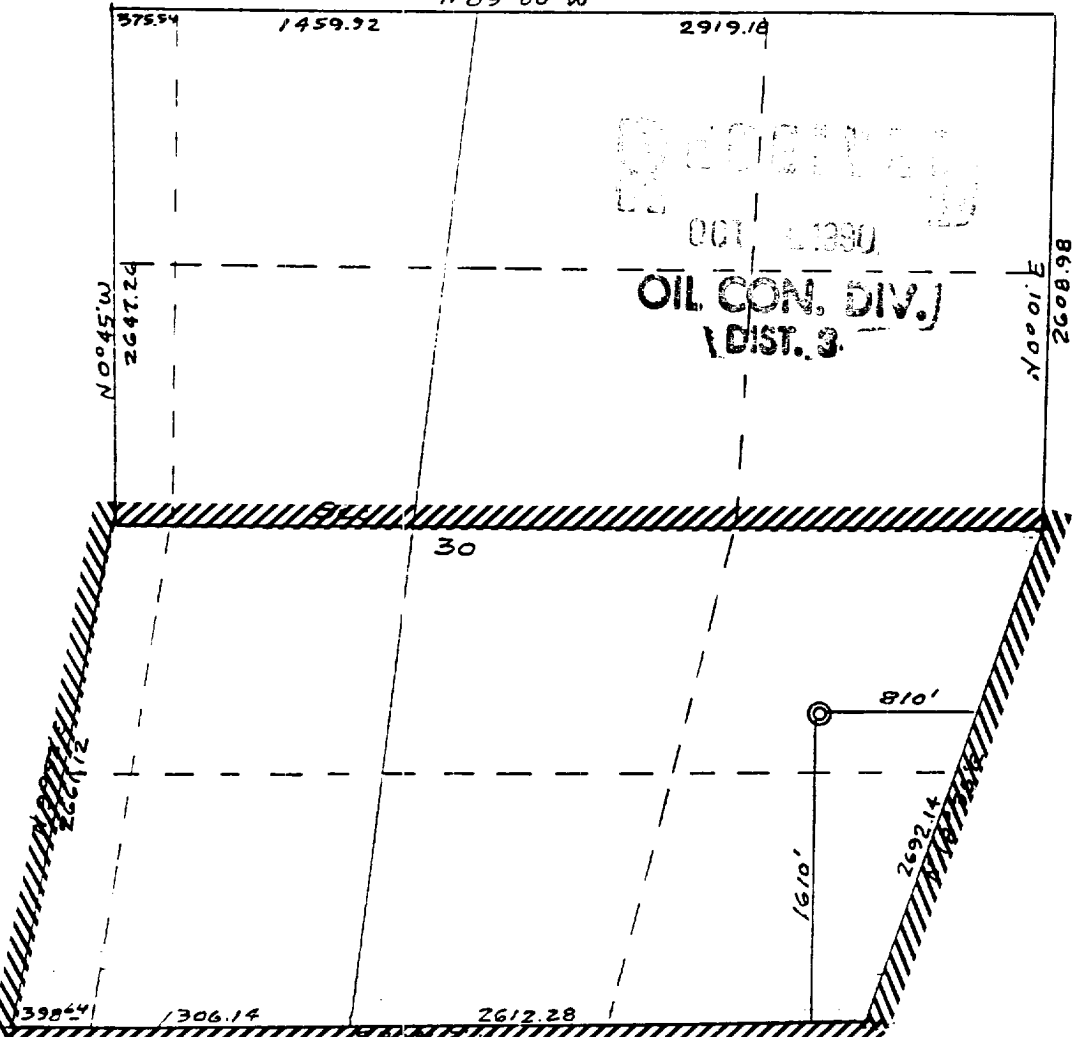
Operator SOUTHWESTLAND ROYALTY COMPANY		Lease CAIN SF-080781		Well No. 3-3
Unit Letter I	Section 30	Township 29N	Range 9W	County San Juan
Actual Footage Location of Well: 1610 feet from the South line and 810 feet from the East line				
Ground Level Elev: 5701'	Producing Formation Mesa Verde/Fruitland	Pool Coal	Blanco/Basin	Dedicated Acreage: 268.42 Acres

1. Outline the acreage dedicated to the subject well by colored pencil or hachure marks on the plat below.
2. If more than one lease is dedicated to the well, outline each and identify the ownership thereof (both as to working interest and royalty).
3. If more than one lease of different ownership is dedicated to the well, have the interests of all owners been consolidated by communitization, unitization, force-pooling, etc?

Yes No If answer is "yes," type of consolidation _____
If answer is "no," list the owners and tract descriptions which have actually been consolidated. (Use reverse side of this form if necessary.) _____

No allowable will be assigned to the well until all interests have been consolidated (by communitization, unitization, forced-pooling, or otherwise) or until a non-standard unit, eliminating such interests, has been approved by the Commission.

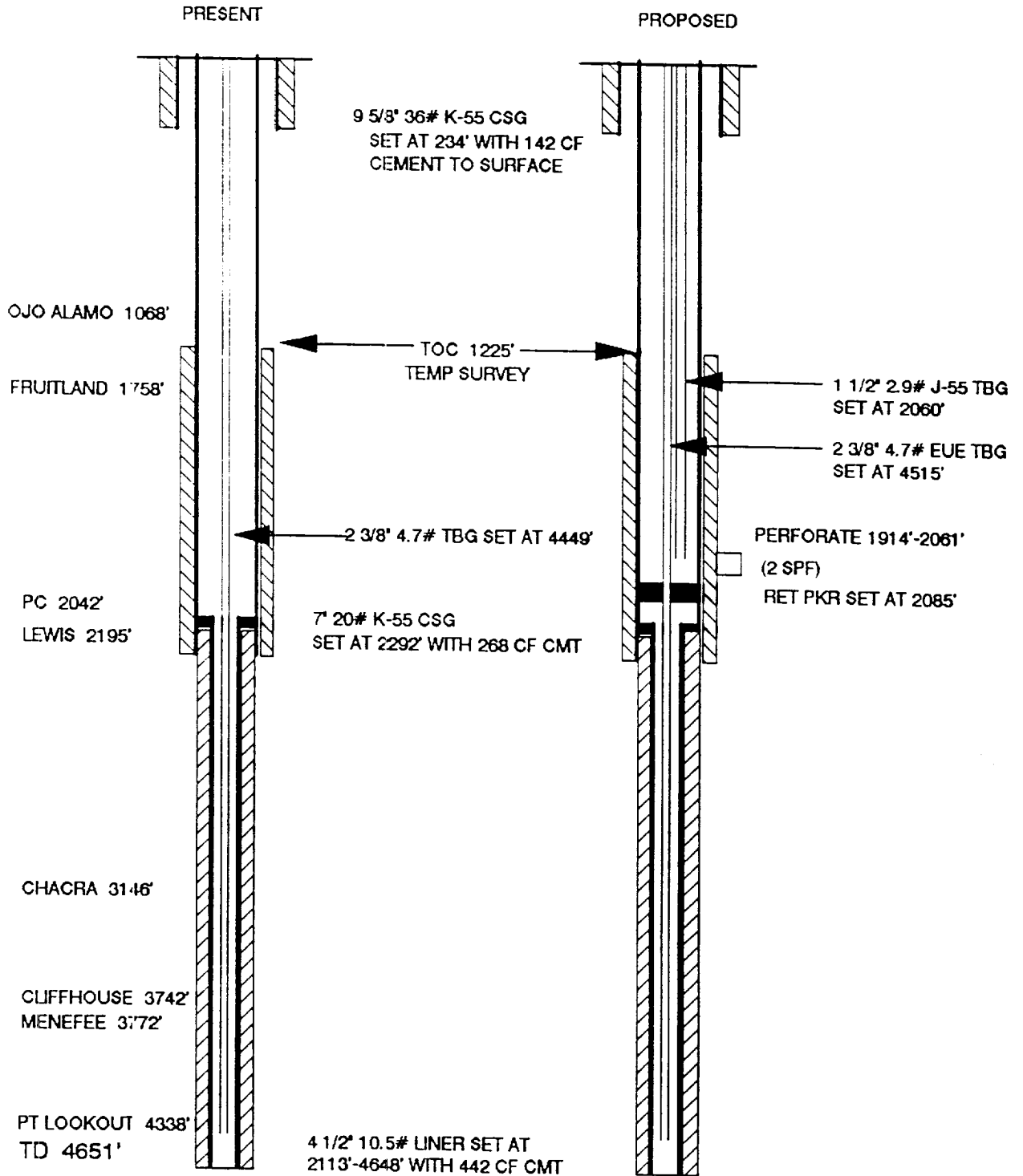
Scale: 1" = 1000'
NB9°00'W



CERTIFICATION	
I hereby certify that the information contained herein is true and complete to the best of my knowledge and belief.	
Name	<i>Peggy Bradfield</i>
Position	Peggy Bradfield Regulatory Affairs
Company	Meridian Oil Inc.
Date	9-21-90
I hereby certify that the well location shown on this plat was plotted from field notes of actual surveys made by me or under my supervision, and that the same is true and correct to the best of my knowledge and belief.	
Date Surveyed	May 5, 1978
Registered Professional Engineer and Land Surveyor	<i>Fred B. Kerr Jr.</i>
Certificate No.	

CAIN #3R WELLBORE DIAGRAMS

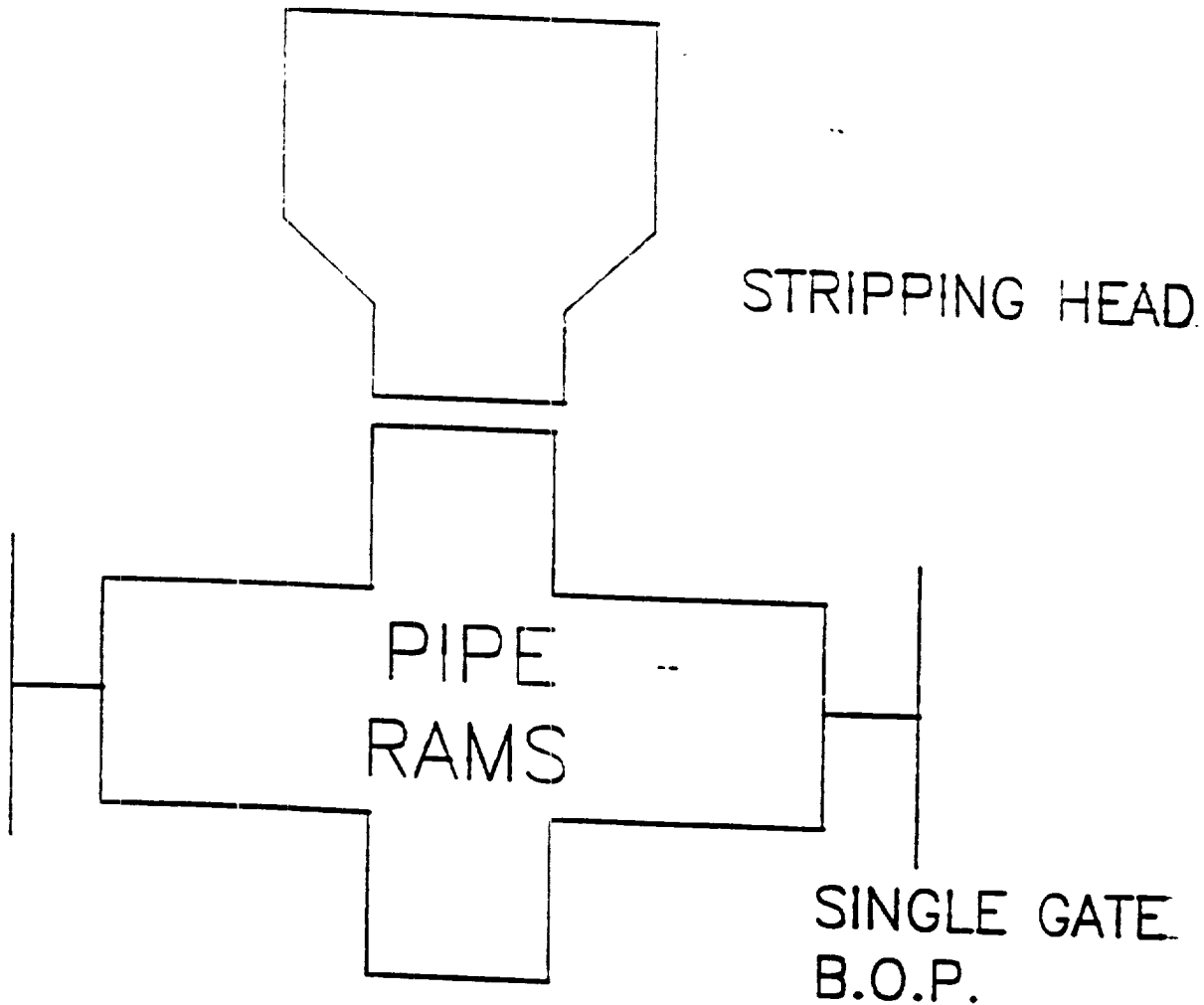
UNIT I SECTION 30 T29N-R09W
FRUITLAND COAL RECOMPLETION
DUAL COMPLETE WITH MESAVERDE



Cain #3R
Procedure to Recomplete Fruitland Coal

1. Check location anchors.
2. MOL and rig up daylight pulling unit with rip pump and blow tank.
3. Kill MV with water as needed. ND wellhead. NU BOP. TOOH with 2 3/8" tubing.
4. Run CNL-GR-CCL. Set retrievable bridge plug at 2085'.
5. Pressure test casing to 2500 psi for 15 minutes. ND BOP. Nipple up dual tubinghead. NU BOP.
6. Perforate the Fruitland Coal interval.
7. Pick up retrievable bridge plug and packer. TIH on 2 3/8" tubing. Isolate each coal interval and breakdown. TOOH.
8. Fracture stimulate coal formation.
9. TIH with 2 3/8" tubing with expendable check on bottom. Blow well with air.
10. Obtain and record gauges. When returns dry up, TOOH with 2 3/8" tubing.
11. Retrieve bridge plug. TIH with 2 3/8" tubing and production packer. Set packer at 2085' and land MV tubing at 4515'.
12. TIH with 1 1/2" tubing and land Fruitland Coal tubing at 2060'.
13. Nipple down BOP. Nipple up wellhead.

WORKOVER / RECOMPLETION B. O. P. SCHEMATIC



MINIMUM: 2 7/8" 1500 PSI SINGLE GATE B.O.P.

MAXIMUM ANTICIPATED SHUT-IN WELLHEAD
PRESSURE IS LESS THAN 1500 PSI