

NO. OF COPIES RECEIVED	5
DISTRIBUTION	
SANTA FE	1
FILE	2
U.S.G.S.	1
LAND OFFICE	
OPERATOR	

NEW MEXICO OIL CONSERVATION COMMISSION

30-045-23662
Form C-101
Revised 1-1-65

5A. Indicate Type of Lease
STATE <input type="checkbox"/> FEDERAL <input checked="" type="checkbox"/>
5. State Oil & Gas Lease No.

APPLICATION FOR PERMIT TO DRILL, DEEPEN, OR PLUG BACK

1a. Type of Work		7. Unit Agreement Name	
b. Type of Well OIL WELL <input type="checkbox"/> GAS WELL <input checked="" type="checkbox"/> OTHER <input type="checkbox"/>		8. Farm or Lease Name State Gas Com "BQ"	
2. Name of Operator AMOCO PRODUCTION COMPANY		9. Well No. 1	
3. Address of Operator 501 Airport Drive, Farmington, New Mexico 87401		10. Field and Pool, or Well Unit Basin Dakota	
4. Location of Well UNIT LETTER I LOCATED 1850 FEET FROM THE South LINE AND 870 FEET FROM THE East LINE OF SEC. 32 TWP. 29N RGE. 13W NMPM		12. County San Juan	
19. Proposed Depth 6400		19A. Formation Dakota	
20. Rotary or M.C.		Rotary	
21. Elevations (Show whether DE, RT, etc.) 5867' GL		21A. Kind & Status Plug. Bond Statewide	
21B. Drilling Contractor Unknown		22. Approx. Date Work will start Within 90 Days	

PROPOSED CASING AND CEMENT PROGRAM

SIZE OF HOLE	SIZE OF CASING	WEIGHT PER FOOT	SETTING DEPTH	SACKS OF CEMENT	EST. TOP
13-3/8"	9-5/8 "	32#	300'	360 sx.	Circ.
8-3/4"	7"	20#	1700'	390 sx.	Circ.
6-8/4"	4-1/2 "	10.5#	6400'	1030 sx.	Circ.

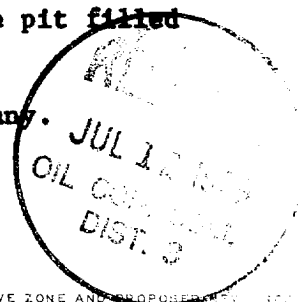
The above well is being drilled to further develop the Basin Dakota Field. The well will be drilled with a low solids non-dispersed mud system. Completion design will be based on open hole logs. Copy of all logs will be filed upon completion. Amoco's standard blowout prevention will be employed; see attached drawing for blowout preventer design.

Upon completion, the well location will be cleaned up and the reserve pit filled and leveled.

Gas produced from this well is dedicated to El Paso Natural Gas Company.

APPROVED
FOR THE STATE ENGINEER
DISTRICT ENGINEER

EXPIRES 10-10-79



IN ABOVE SPACE DESCRIBE PROPOSED PROGRAM; IF PROPOSAL IS TO DEEPEN OR PLUG BACK, GIVE DATA ON PRESENT PRODUCTIVE ZONE AND PROPOSED PRODUCTIVE ZONE. GIVE BLOWOUT PREVENTER PROGRAM, IF ANY.

I hereby certify that the information above is true and complete to the best of my knowledge and belief.

Signed B. E. FACKRELL Title District Engineer Date July 6, 1979

(This space for State Use)

APPROVED BY Frank S. Carey TITLE DEPUTY OIL & GAS INSPECTOR, DIST. #3 DATE JUL 12 1979

CONDITIONS OF APPROVAL, IF ANY:

OIL CONSERVATION DIVISION

STATE OF NEW MEXICO
ENERGY AND MINERALS DEPARTMENT

P. O. BOX 2088

SANTA FE, NEW MEXICO 87501

Form C-102 10-1-78
Revised 10-1-78

All distances must be from the outer boundaries of the Section.

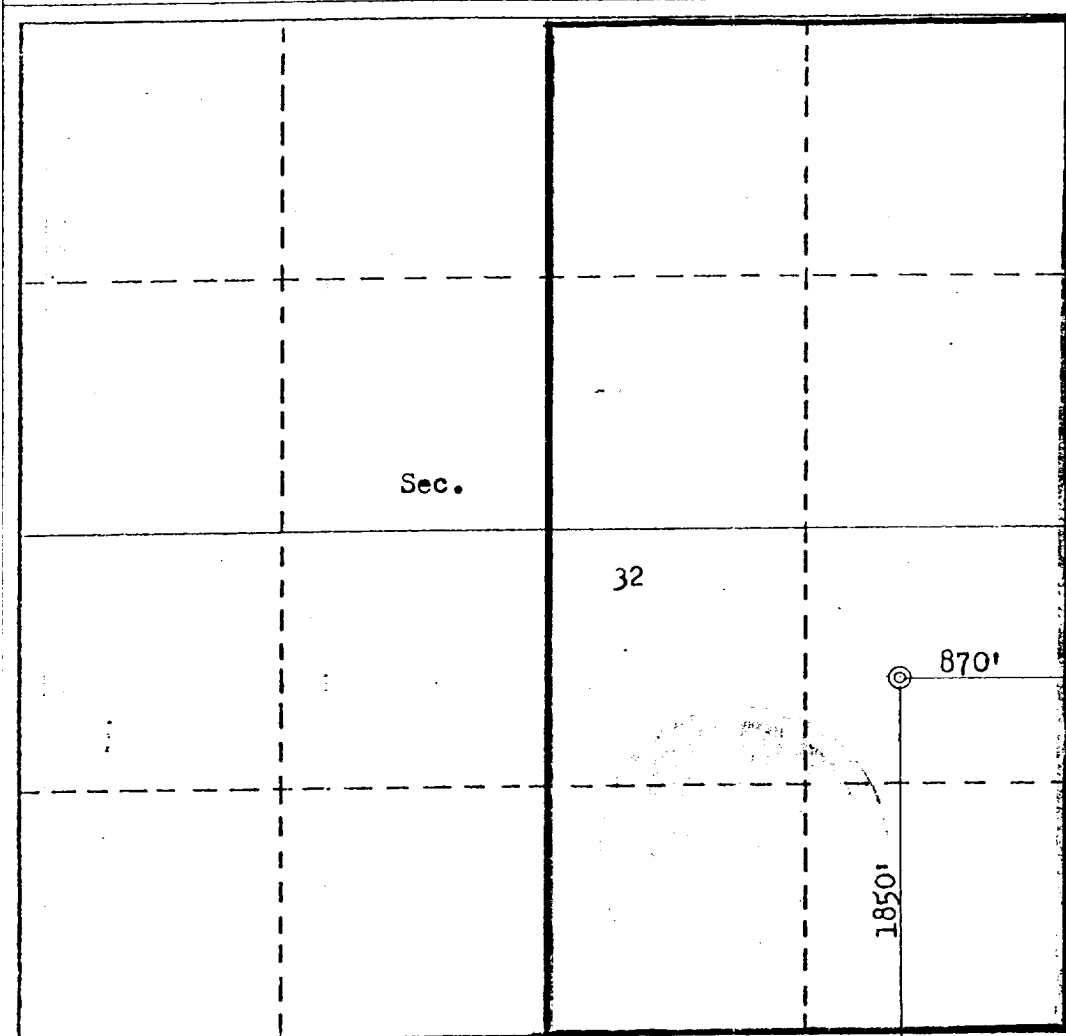
Operator AMOCO PRODUCTION COMPANY			Lease STATE GAS COM "BQ"		Well No. 1
Unit Letter I	Section 32	Township 29N	Range 13W	County San Juan	
Actual Footage Location of Well: 1850 feet from the South line and 870 feet from the East line					
Ground Level Elev. 5867	Producing Formation Dakota		Pool Basin Dakota		Dedicated Acreage: 1320 Acres

1. Outline the acreage dedicated to the subject well by colored pencil or hatchure marks on the plat below.
2. If more than one lease is dedicated to the well, outline each and identify the ownership thereof (both as to working interest and royalty).
3. If more than one lease of different ownership is dedicated to the well, have the interests of all owners been consolidated by communitization, unitization, force-pooling, etc?

☒ Yes ☐ No If answer is "yes," type of consolidation Communitization has been filed

If answer is "no," list the owners and tract descriptions which have actually been consolidated. (Use reverse side of this form if necessary.) _____

No allowable will be assigned to the well until all interests have been consolidated (by communitization, unitization, forced-pooling, or otherwise) or until a non-standard unit, eliminating such interests, has been approved by the Division.



CERTIFICATION

I hereby certify that the information contained herein is true and complete to the best of my knowledge and belief.

B. E. Fackrell

Name

B. E. FACKRELL

Position

DISTRICT ENGINEER

Company

AMOCO PRODUCTION COMPANY

Date

JULY 7, 1979

I hereby certify that the well location shown on this plat was plotted from field notes of actual surveys made by me or under my supervision, and that the same is true and correct to the best of my knowledge and belief.

Date Surveyed

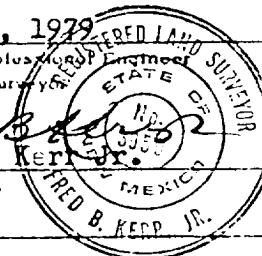
June 27, 1979

Registered Professional Engineer and/or Land Surveyor

Fred B. Kerp
Fred B. Kerp

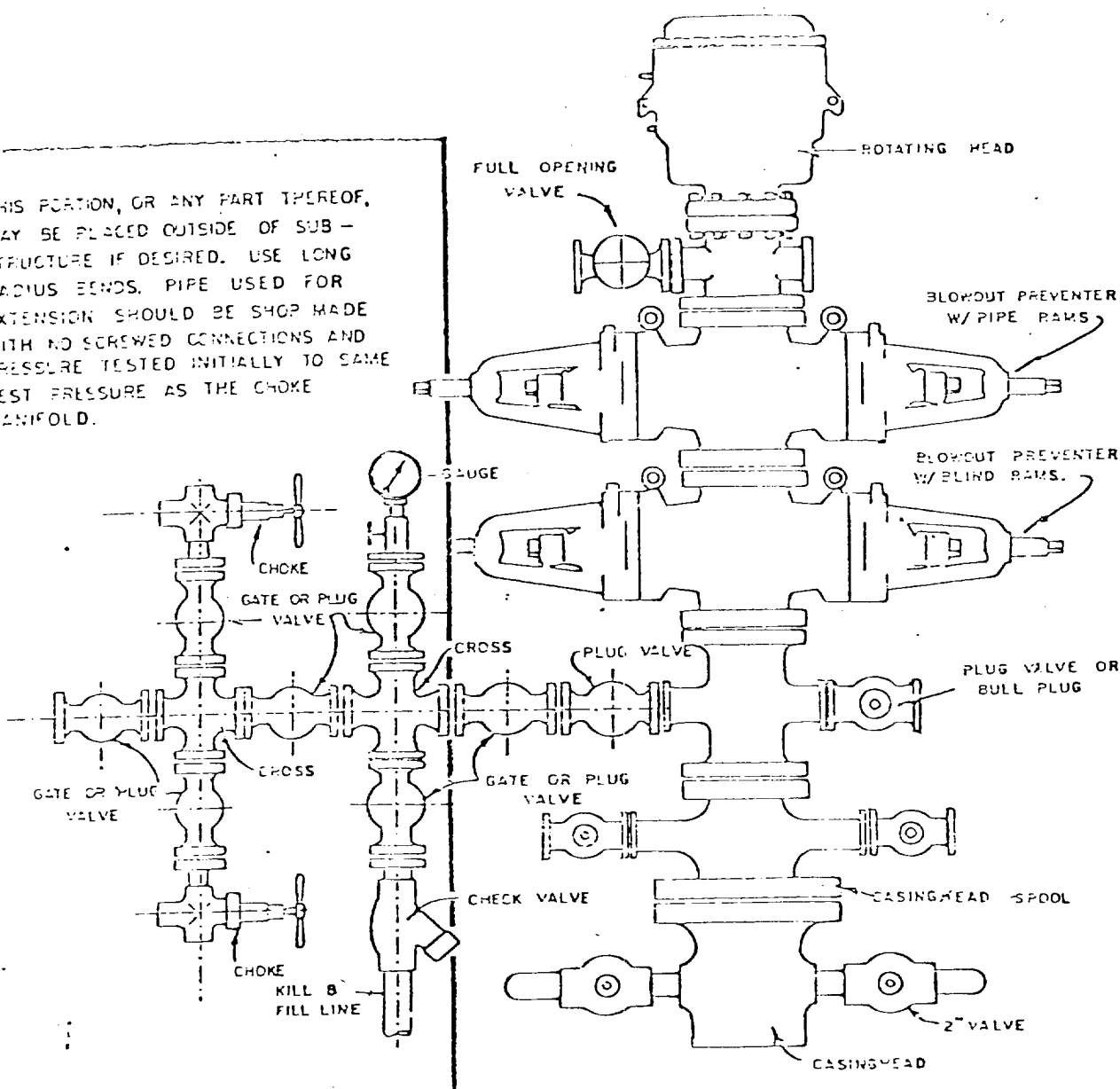
Certificate No.

3950



0 330 660 990 1320 1650 1980 2310 2640 2970 3300 3630 3960 4290 4620 4950 5280 5610 5940 6270 6600

THIS PORTION, OR ANY PART THEREOF, MAY BE PLACED OUTSIDE OF SUB-STRUCTURE IF DESIRED. USE LONG RADIUS BENDS. PIPE USED FOR EXTENSION SHOULD BE SHOP MADE WITH NO SCREWED CONNECTIONS AND PRESSURE TESTED INITIALLY TO SAME TEST PRESSURE AS THE CHOKE MANIFOLD.



BLOWOUT PREVENTER HOOKUP