

NO. OF COPIES RECEIVED	5
DISTRIBUTION	
SANTA FE	1
FILE	1
U.S.G.S.	2
LAND OFFICE	
OPERATOR	1

# NEW MEXICO OIL CONSERVATION COMMISSION

APPROVAL  
FOR 90 DAYS  
DRILLING

EXPIRES 11-19-79

30-044-23729  
Form C-101  
Revised 1-1-65

5A. Indicate Type of Lease
STATE <input type="checkbox"/> FEE <input checked="" type="checkbox"/>
5. State Oil & Gas Lease No.

## APPLICATION FOR PERMIT TO DRILL, DEEPEN, OR PLUG BACK

1a. Type of Work		7. Unit Agreement Name	
b. Type of Well OIL WELL <input type="checkbox"/> GAS WELL <input checked="" type="checkbox"/> OTHER <input type="checkbox"/> Infill		8. Farm or Lease Name Keys Gas Com "D"	
2. Name of Operator AMOCO PRODUCTION COMPANY		9. Well No. 1E	
3. Address of Operator 501 Airport Drive, Farmington, New Mexico		10. Field and Pool, or Wildcat Basin Dakota	
4. Location of Well UNIT LETTER I LOCATED 1810 FEET FROM THE South LINE AND 1030 FEET FROM THE East LINE OF SEC. 29 TWP. 29N RGE. 10W NMPM		12. County San Juan	
19. Proposed Depth 6420'		19A. Formation Dakota	
20. Rotary or C.T. Rotary		21. Elevations (Show whether DT, RT, etc.) 5531' GL	
21A. Kind & Status Plug. Bond Statewide		21B. Drilling Contractor Unknown	
22. Approx. Date Work will start 9/19/79			

## PROPOSED CASING AND CEMENT PROGRAM

SIZE OF HOLE	SIZE OF CASING	WEIGHT PER FOOT	SETTING DEPTH	SACKS OF CEMENT	EST. TOP
12-1/4"	9-5/8"	32.3 #	300'	240 sx.	Surface
8-3/4"	7"	23 #	2185'	325 sx.	Surface
6-1/4"	4-1/2"	11.6 #	6420'	220 sx.	2035

Amoco proposes to drill the above well to further develop the Basin Dakota reservoir. The well will be drilled to the surface casing point using native mud. The well will then be drilled to the intermediate casing point with a low solids nondispersed mud system and to TD with air. Completion design will be based on open hole logs. Copy of all logs will be filed upon completion. Amoco's standard blowout prevention will be employed; see attached drawing for blowout preventer design.

Upon completion the well location will be cleaned and the reserve pit filled and leveled.

Gas produced from this well is dedicated to El Paso Natural Gas Co.

IN ABOVE SPACE DESCRIBE PROPOSED PROGRAM: IF PROPOSAL IS TO DEEPEN OR PLUG BACK, GIVE DATA ON PRESENT PRODUCTIVE ZONE AND PROPOSED NEW PRODUCTIVE ZONE. GIVE BLOWOUT PREVENTER PROGRAM, IF ANY.

I hereby certify that the information above is true and complete to the best of my knowledge and belief.

Signed B. E. F. L. Title District Engineer Date August 17, 1979

(This space for State Use)

APPROVED BY Frank S. Chang TITLE DEPUTY OIL & GAS OR, DIST. #3 DATE 979

CONDITIONS OF APPROVAL, IF ANY:

## OIL CONSERVATION DIVISION

STATE OF NEW MEXICO  
ENERGY AND MINERALS DEPARTMENTP. O. BOX 2088  
SANTA FE, NEW MEXICO 87501Form C-102  
Revised 10-1-78

All distances must be from the outer boundaries of the Section.

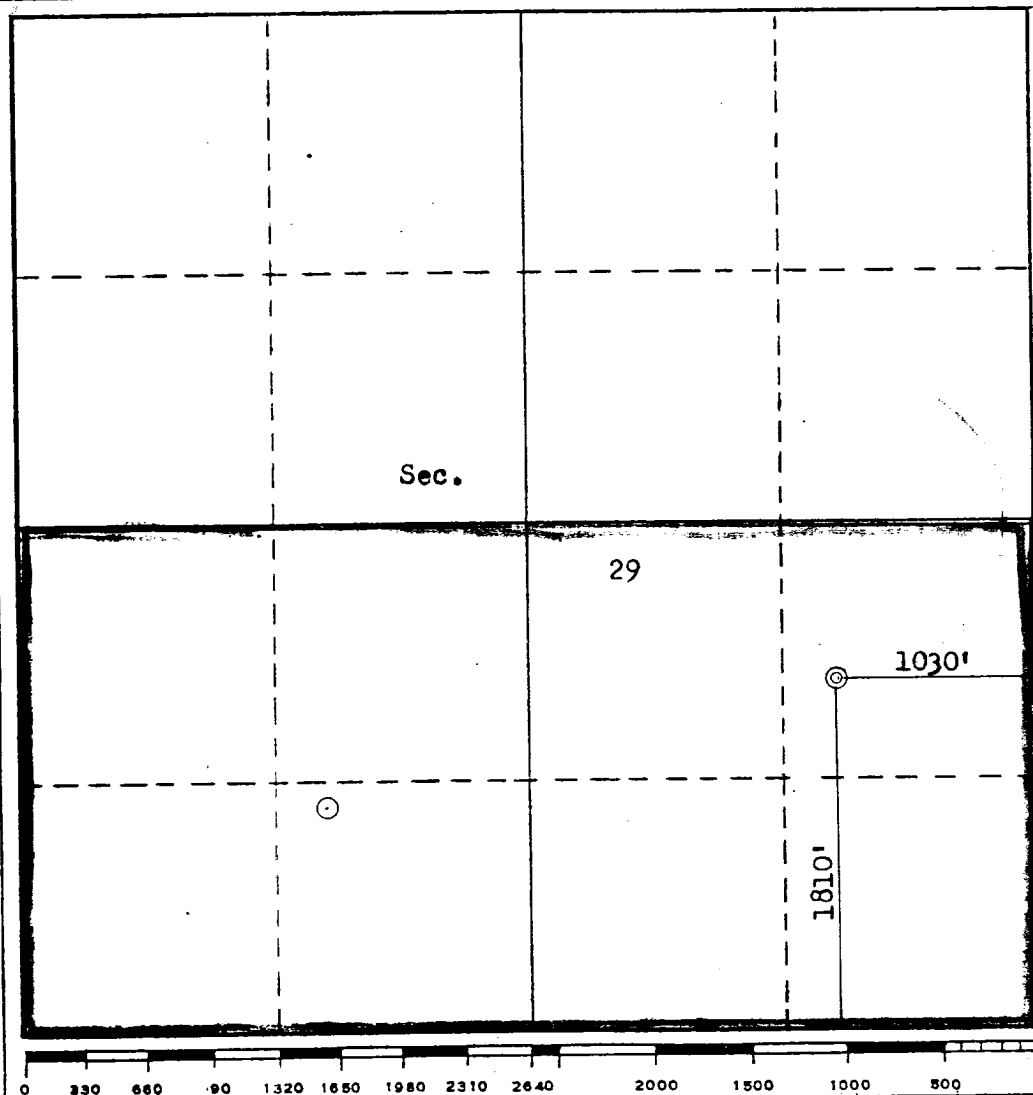
Operator <b>AMOCO PRODUCTION COMPANY</b>			Lease <b>KEYS GAS COM "D"</b>		Well No. <b>1 E</b>
Unit Letter <b>I</b>	Section <b>29</b>	Township <b>29N</b>	Range <b>10W</b>	County <b>San Juan</b>	
Actual Footage Location of Well: <b>1810</b> feet from the <b>South</b> line and <b>1030</b> feet from the <b>East</b> line					
Ground Level Elev. <b>5531</b>	Producing Formation <b>Dakota</b>		Pool <b>Basin Dakota</b>		Dedicated Acreage: <b>320</b> Acres

1. Outline the acreage dedicated to the subject well by colored pencil or hachure marks on the plat below.
2. If more than one lease is dedicated to the well, outline each and identify the ownership thereof (both as to working interest and royalty).
3. If more than one lease of different ownership is dedicated to the well, have the interests of all owners been consolidated by communitization, unitization, force-pooling, etc?

☒ Yes ☐ No If answer is "yes," type of consolidation Communitization

If answer is "no," list the owners and tract descriptions which have actually been consolidated. (Use reverse side of this form if necessary.) \_\_\_\_\_

No allowable will be assigned to the well until all interests have been consolidated (by communitization, unitization, forced-pooling, or otherwise) or until a non-standard unit, eliminating such interests, has been approved by the Commission.



## CERTIFICATION

I hereby certify that the information contained herein is true and complete to the best of my knowledge and belief.

*B. E. Fackrell*

Name  
B. E. FACKRELL

Position  
DISTRICT ENGINEER

Company  
AMOCO PRODUCTION COMPANY

Date  
AUGUST 14, 1979

I hereby certify that the well location shown on this plat was plotted from field notes of actual surveys made by me or under my supervision, and that the same is true and correct to the best of my knowledge and belief.

Date Surveyed

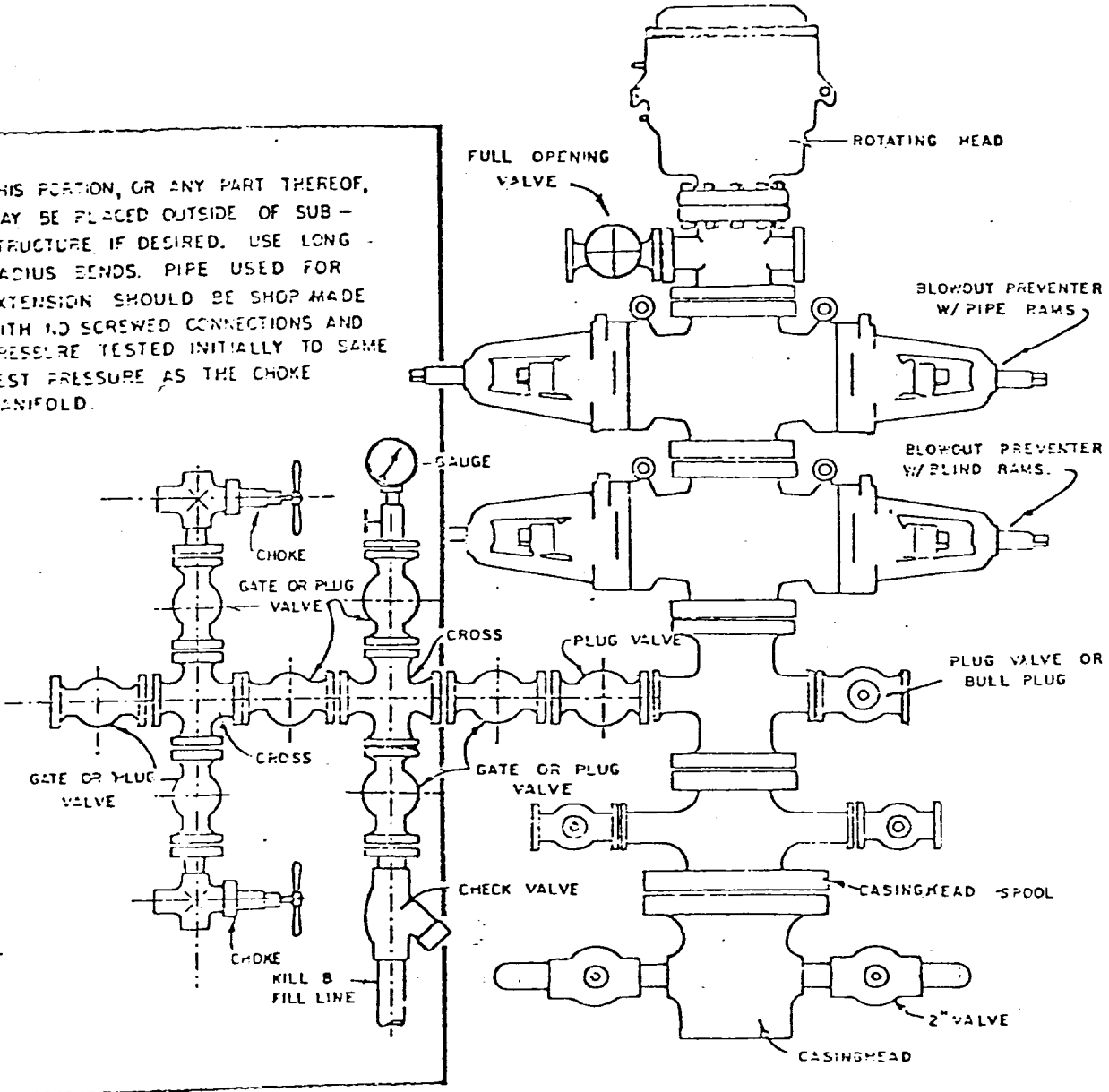
August 14, 1979

Registered Professional Engineer  
and/or Land Surveyor

*Fred B. Kerr Jr.*  
Fred B. Kerr Jr.

Certificate No. **3950**

THIS PORTION, OR ANY PART THEREOF, MAY BE PLACED OUTSIDE OF SUB-STRUCTURE, IF DESIRED. USE LONG RADIUS BENDS. PIPE USED FOR EXTENSION SHOULD BE SHOP MADE WITH NO SCREWED CONNECTIONS AND PRESSURE TESTED INITIALLY TO SAME TEST PRESSURE AS THE CHOKE MANIFOLD.



BLOWOUT PREVENTER HOOKUP