

UNITED STATES  
DEPARTMENT OF THE INTERIOR  
GEOLOGICAL SURVEY

SUNDRY NOTICES AND REPORTS ON WELLS

(Do not use this form for proposals to drill or to deepen or plug back to a different reservoir. Use Form 9-331-C for such proposals.)

1. oil ☐ well gas ☒ well other

2. NAME OF OPERATOR

Southland Royalty Company

3. ADDRESS OF OPERATOR

P.O. Drawer 570, Farmington, N.M. 87401

4. LOCATION OF WELL (REPORT LOCATION CLEARLY. See space 17 below.)

AT SURFACE: 870' FNL & 1760' FEL

AT TOP PROD. INTERVAL:

AT TOTAL DEPTH:

16. CHECK APPROPRIATE BOX TO INDICATE NATURE OF NOTICE, REPORT, OR OTHER DATA

REQUEST FOR APPROVAL TO:

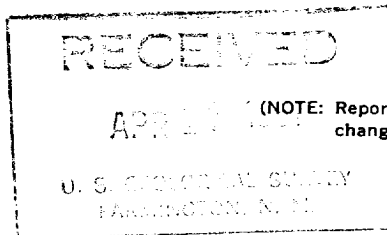
TEST WATER SHUT-OFF ☐  
FRACTURE TREAT ☐  
SHOOT OR ACIDIZE ☐  
REPAIR WELL ☐  
PULL OR ALTER CASING ☐  
MULTIPLE COMPLETE ☐  
CHANGE ZONES ☐  
ABANDON\* ☐

SUBSEQUENT REPORT OF:

☐  
☐  
☐  
☐  
☐  
☐  
☐  
☐  
☐  
☐

(other) Perforation & Stimulation X

Production Tubing Report X



(NOTE: Report results of multiple completion or zone change on Form 9-330.)

17. DESCRIBE PROPOSED OR COMPLETED OPERATIONS (Clearly state all pertinent details, and give pertinent dates, including estimated date of starting any proposed work. If well is directionally drilled, give subsurface locations and measured and true vertical depths for all markers and zones pertinent to this work.)\*

4/12/81 Perforated Dakota at 6277', 6283', 6356', 6362', 6367', 6372', 6377', 6383', 6425', 6430', 6449', 6454' (total of 12 holes).  
Frac'd with 70,728 gals 30# gelled 1% KCl water and 60,000# of 20/40 sand. AIR 23 BPM, ATP 2700 psi, ISIP 1500 psi.

4/13/81 Landed 203 joints (6404') of 2-3/8", 4.70#, J-55 tubing at 6415'.

Subsurface Safety Valve: Manu. and Type \_\_\_\_\_ Set @ \_\_\_\_\_ Ft.

18. I hereby certify that the foregoing is true and correct

SIGNED Colleen Dwyer TITLE Drilling Clerk DATE April 15, 1981

(This space for Federal or State office use)

APPROVED BY \_\_\_\_\_ TITLE \_\_\_\_\_ DATE \_\_\_\_\_  
CONDITIONS OF APPROVAL, IF ANY:

100

ACCEPTED FOR RECORD

APR 21 1981

\*See Instructions on Reverse Side

FARMINGTON DISTRICT

BY 2