

NO. OF COPIES RECEIVED	5
DISTRIBUTION	
SANTA FE	7
FILE	1
U.S.G.S.	2
LAND OFFICE	
OPERATOR	7

5A. Indicate Type of Lease  
STATE ☐ FEDERAL ☒

5. State Oil &amp; Gas Lease No.

## APPLICATION FOR PERMIT TO DRILL, DEEPEN, OR PLUG BACK

1A. Type of Work

DRILL ☒DEEPEN ☐PLUG BACK ☐

b. Type of Well

OIL WELL ☐GAS WELL ☒

OTHER

INFILL

SINGLE ZONE ☒MULTIPLE ZONE ☐

2. Name of Operator

AMOCO PRODUCTION COMPANY

3. Address of Operator

501 Airport Drive, Farmington, New Mexico 87401

4. Location of Well

UNIT LETTER E LOCATED 1755 FEET FROM THE North LINE

AND 910 FEET FROM THE West

LINE OF SEC. 35 TWP. 29N RGE. 12W

7. Unit Agreement Name

Gallegos Canyon Unit

8. Term of Lease Name

9. Well No.

170E

10. Field and Pool, or Wildcat

Basin Dakota

12. County

San Juan

11. Proposed Depth	19A. Formation	20. Rotary or C.T.
6500'	Dakota	Rotary
21. Elevations (Show whether DF, RL, etc.)	21A. Kind & Status Plug. Bond	21B. Drilling Contractor
5345' GL	Statewide	Unknown
		22. Approx. Date Work will start
		March 1, 1980

23.

## PROPOSED CASING AND CEMENT PROGRAM

SIZE OF HOLE	SIZE OF CASING	WEIGHT PER FOOT	SETTING DEPTH	SACKS OF CEMENT	EST. TOP
12-1/4"	8-5/8"	24#	300'	315	Surface
7-7/8"	4-1/2"	10.5#	6500'	1250	Surface

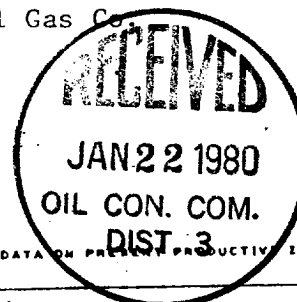
Amoco proposes to drill the above well to further develop the Basin Dakota reservoir. The well will be drilled to the surface casing point using native mud. The well will then be drilled to TD with a low solids nondispersed mud system. Completion design will be based on open hole logs. Copy of all logs will be filed upon completion. Amoco's standard blowout prevention will be employed; see attached drawing for blowout preventer design.

Upon completion the well location will be cleaned and the reserve pit filled and leveled.

Gas produced from this well is dedicated to El Paso Natural Gas Co.

APPROVAL VALID  
FOR 90 DAYS UNLESS  
DRILLING COMMENCED,

EXPIRES 4-21-80



IN ABOVE SPACE DESCRIBE PROPOSED PROGRAM; IF PROPOSAL IS TO DEEPEN OR PLUG BACK, GIVE DATA ON PROPOSED PRODUCTIVE ZONE AND PROPOSED NEW PRODUCTIVE ZONE, GIVE BLOWOUT PREVENTER PROGRAM, IF ANY.

I hereby certify that the information above is true and complete to the best of my knowledge and belief.

Original Signed By

B. E. Fackrell

Title

District Engineer

Date January 18, 1980

(This space for State Use)

APPROVED BY

CONDITIONS OF APPROVAL, IF ANY:

TITLE

SUPERVISOR DISTRICT # 3

DATE

JAN 22 1980

All distances must be from the outer boundaries of the Section

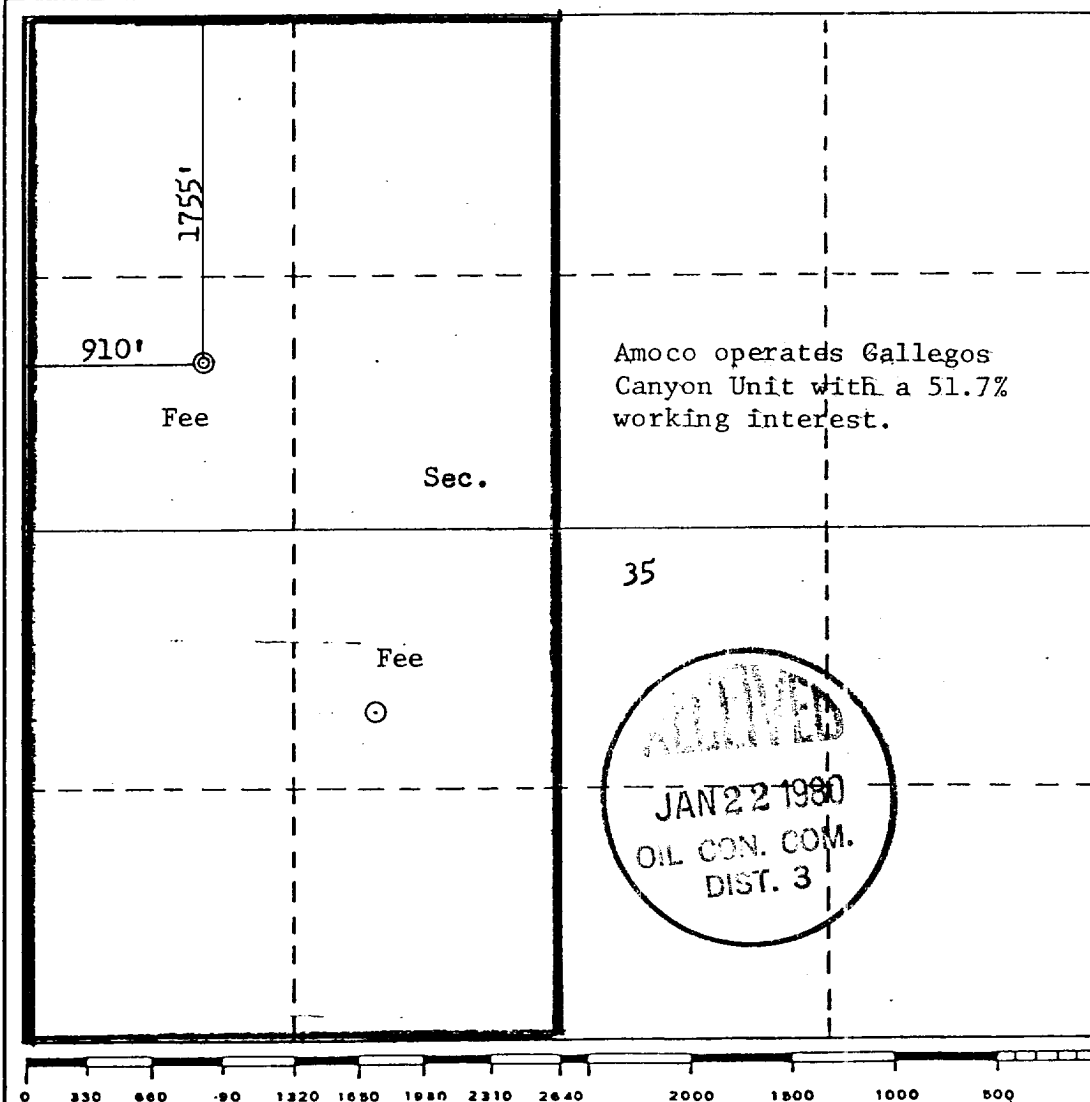
Operator <b>AMOCO PRODUCTION COMPANY</b>			Lease <b>GALLEGOS CANYON UNIT</b>		Well No. <b>170-E</b>
Unit Letter <b>E</b>	Section <b>35</b>	Township <b>29N</b>	Range <b>12W</b>	County <b>San Juan</b>	
Actual Footage Location of Well: <b>1755</b> feet from the <b>North</b> line and <b>910</b> feet from the <b>West</b> line					
Ground Level Elev. <b>5345</b>	Producing Formation <b>Dakota</b>		Pool <b>Basin Dakota</b>		Dedicated Acreage: <b>320</b> Acres

1. Outline the acreage dedicated to the subject well by colored pencil or hatchure marks on the plat below.
2. If more than one lease is dedicated to the well, outline each and identify the ownership thereof (both as to working interest and royalty).
3. If more than one lease of different ownership is dedicated to the well, have the interests of all owners been consolidated by communitization, unitization, force-pooling, etc?

☒ Yes ☐ No If answer is "yes," type of consolidation Unitization (Gallegos Canyon Unit)

If answer is "no," list the owners and tract descriptions which have actually been consolidated. (Use reverse side of this form if necessary.)

No allowable will be assigned to the well until all interests have been consolidated (by communitization, unitization, forced-pooling, or otherwise) or until a non-standard unit, eliminating such interests, has been approved by the Commission.



## CERTIFICATION

I hereby certify that the information contained herein is true and complete to the best of my knowledge and belief.

*B. E. Fackrell*

Name

B. E. FACKRELL

Position

DISTRICT ENGINEER

Company

AMOCO PRODUCTION COMPANY

Date

JANUARY 15, 1980

I hereby certify that the well location shown on this plat was plotted from field notes of actual surveys made by me or under my supervision, and that the same is true and correct to the best of my knowledge and belief.

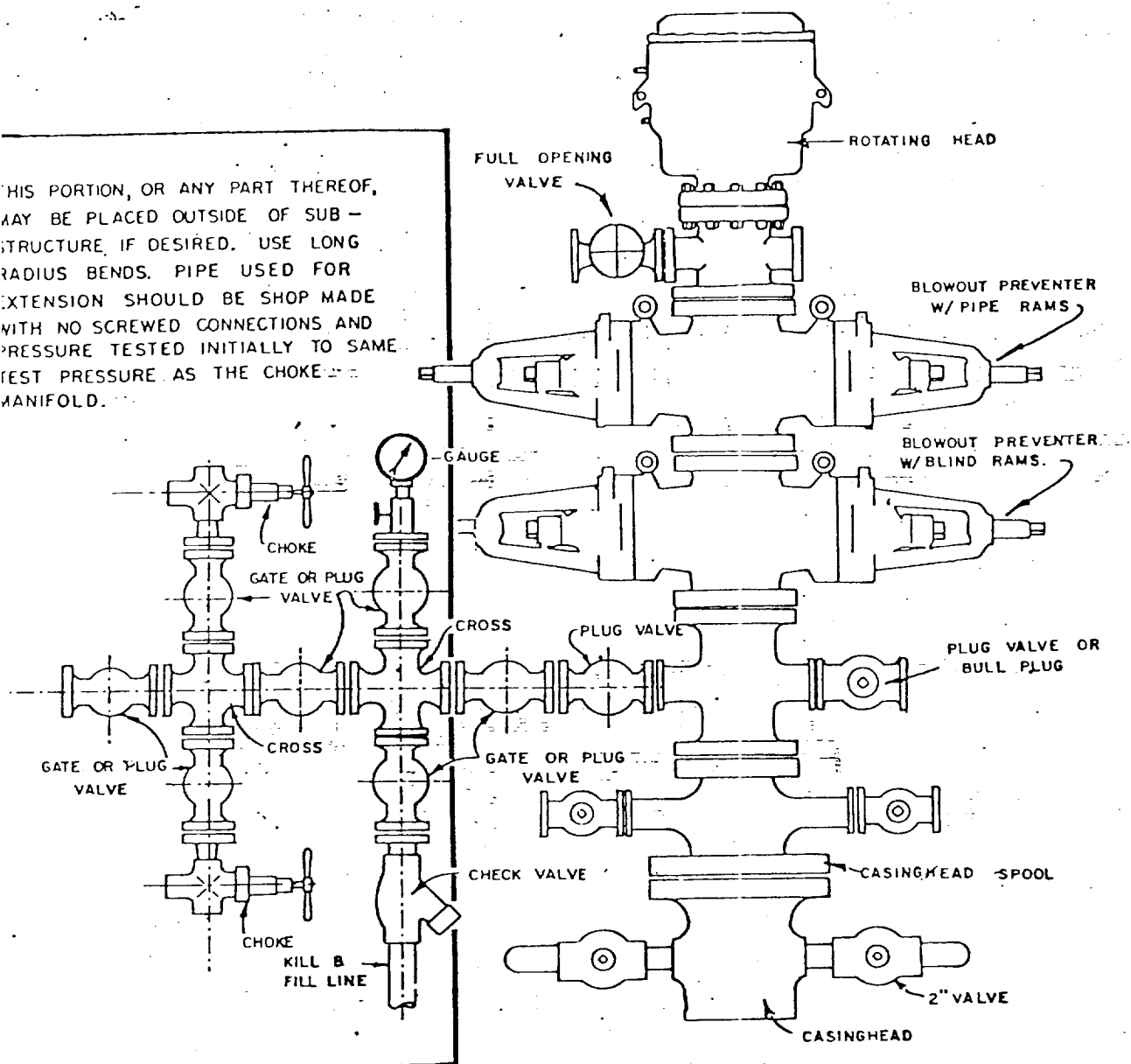
Date Surveyed

January 8, 1980

Registered Professional Engineer  
and/or Land Surveyor*Fred B. Kerr Jr.*  
Fred B. KERR, JR.

Certificate No. 3950

THIS PORTION, OR ANY PART THEREOF, MAY BE PLACED OUTSIDE OF SUB-STRUCTURE, IF DESIRED. USE LONG RADIUS BENDS. PIPE USED FOR EXTENSION SHOULD BE SHOP MADE WITH NO SCREWED CONNECTIONS AND PRESSURE TESTED INITIALLY TO SAME TEST PRESSURE AS THE CHOKE MANIFOLD.



BLOWOUT PREVENTER HOOKUP