

STATE OF NEW MEXICO  
ENERGY AND MINERALS DEPARTMENT

OIL CONSERVATION DIVISION

P. O. BOX 2088

SANTA FE, NEW MEXICO 87501

30-045-24614

Form C-101

Revised 10-1-78

NO. OF COPIES RECEIVED	
DISTRIBUTION	
SANTA FE	
FILE	
U.S.G.S.	
LAND OFFICE	
OPERATOR	

5A. Indicate Type of Lease  
STATE ☒ FREE ☐

5. State Oil & Gas Lease No.

E-2447

APPLICATION FOR PERMIT TO DRILL, DEEPEN, OR PLUG BACK

1a. Type of Work  
b. Type of Well  
OIL WELL ☐ GAS WELL ☒ OTHER ☐  
DRILL ☒ DEEPEN ☐ PLUG BACK ☐  
SINGLE ZONE ☒ MULTIPLE ZONE ☐

7. Unit Agreement Name

Gallegos Canyon Unit

8. Name of Lease Name

2. Name of Operator  
Energy Reserves Group, Inc.

9. Well No.

324

3. Address of Operator  
P.O. Box 3280, Casper, Wyoming 82602

10. Field and Pool, or Wildcat

West Kutz Pictured Cliffs

4. Location of Well  
UNIT LETTER G LOCATED 1,590' FEET FROM THE FNL LINE  
1,450' FEET FROM THE FEL LINE OF SEC. 32 TWP. T29N RST. R12W

17. County

San Juan

19. Proposed Depth 1,620	19A. Formation Pictured Cliffs	20. Rotary or C.T. Rotary
21. Elevations (Show whether DT, RT, etc.) 5,472' GR	21A. Kind & Status Plug. Bond Blanket 3881464	21B. Drilling Contractor Unknown
		22. Approx. Date Work will start Nov.-Dec. 1980

23.

PROPOSED CASING AND CEMENT PROGRAM

SIZE OF HOLE	SIZE OF CASING	WEIGHT PER FOOT	SETTING DEPTH	SACKS OF CEMENT	EST. TOP
12-1/4"	8-5/8"	24#	120'	cmt to surface	
6-3/4"	4-1/2"	9.5#	1,620'	cmt to surface	

Energy Reserves Group, Inc. proposes to drill the above referenced well with rotary tools from the surface to T.D.

Gas is dedicated to El Paso Natural Gas Company.

The Ojo Alamo Formation is located between 100'-700' depending on the area. The Ojo Alamo is fresh water bearing sand.

Fruitland @1100' may be gas productive. Pictured Cliffs @ 1370' is expected to be gas productive.

8-5/8", 24#, K-55, ST&C, New Casing  
4-1/2", 9.5#, K-55, ST&C, New Casing  
(4-1/2" will be cemented to the surface)

APPROVAL VALID  
FOR 90 DAYS UNLESS  
DRILLING COMMENCED,

EXPIRES 1-8-81

BOE will consist of an 8" series 900, 3000 psi double ram BOP.

IN ABOVE SPACE DESCRIBE PROPOSED PROGRAM: IF PROPOSAL IS TO DEEPEN OR PLUG BACK, GIVE DATA ON PRESENT PRODUCTIVE ZONE AND PROPOSED NEW PRODUCTIVE ZONE. GIVE BLOWOUT PREVENTER PROGRAM, IF ANY.

I hereby certify that the information above is true and complete to the best of my knowledge and belief.

Signed Charles Gholson Title Field Services Administrator Date 10-6-80

(This space for State Use)

Original Signed by CHARLES GHOLSON

DEPUTY OIL & GAS INSPECTOR, DIST. #3

OCT 10 1980

APPROVED BY \_\_\_\_\_ TITLE \_\_\_\_\_ DATE \_\_\_\_\_

CONDITIONS OF APPROVAL, IF ANY:

## OIL CONSERVATION DIVISION

P. O. BOX 2088

SANTA FE, NEW MEXICO 87501

Form C-107  
Revised 10-1-78

STATE OF NEW MEXICO

ENERGY AND MINERALS DEPARTMENT

All distances must be from the outer boundaries of the Section.

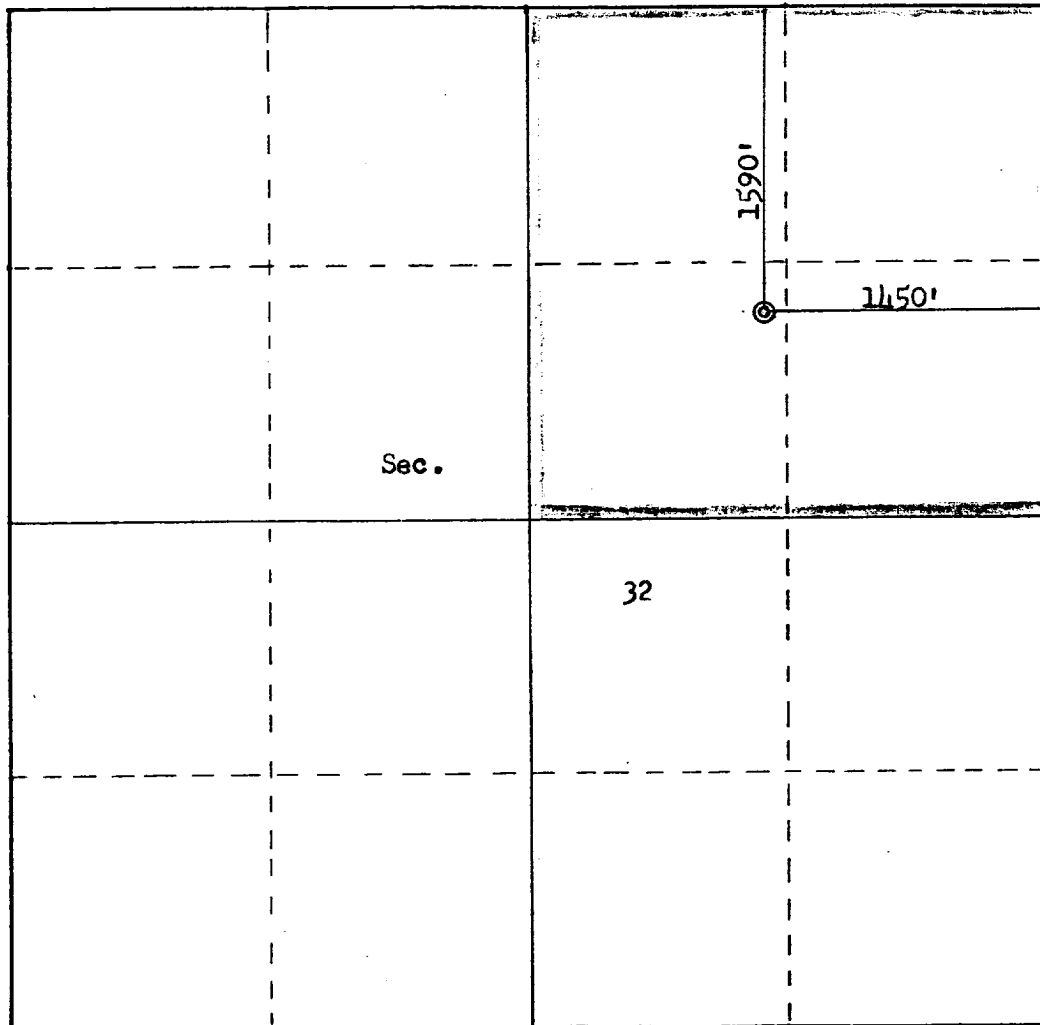
Operator <b>ENERGY RESERVES GROUP</b>			Lease <b>GALLEGOS CANYON UNIT</b>		Well No. <b>324</b>
Unit Letter <b>G</b>	Section <b>32</b>	Township <b>29N</b>	Range <b>12W</b>	County <b>San Juan</b>	
Actual Footage Location of Well: <b>1590</b> feet from the <b>North</b> line and <b>1450</b> feet from the <b>East</b> line					
Ground Level Elev: <b>5472</b>	Producing Formation <b>Pictured Cliffs</b>		Pool <b>West Kutz Pictured Cliffs</b>		Dedicated Acreage: <b>160</b> Acres

1. Outline the acreage dedicated to the subject well by colored pencil or hachure marks on the plat below.
2. If more than one lease is dedicated to the well, outline each and identify the ownership thereof (both as to working interest and royalty).
3. If more than one lease of different ownership is dedicated to the well, have the interests of all owners been consolidated by communitization, unitization, force-pooling, etc?

☐ Yes ☐ No If answer is "yes," type of consolidation \_\_\_\_\_

If answer is "no," list the owners and tract descriptions which have actually been consolidated. (Use reverse side of this form if necessary.) \_\_\_\_\_

No allowable will be assigned to the well until all interests have been consolidated (by communitization, unitization, forced-pooling, or otherwise) or until a non-standard unit, eliminating such interests, has been approved by the Commission.



Scale: 1"=1000'

## CERTIFICATION

I hereby certify that the information contained herein is true and complete to the best of my knowledge and belief.

Name \_\_\_\_\_  
Field Services Administrator  
Position \_\_\_\_\_  
Energy Reserves Group, Inc.  
Company \_\_\_\_\_  
9-18-80  
Date \_\_\_\_\_  
OIL CON. COM.  
DIST. 3

I hereby certify that the well location shown on this plat was plotted from field notes of actual surveys made by me or under my supervision, and that the same is true and correct to the best of my knowledge and belief.

Date Surveyed  
**September 7, 1980**  
Registered Professional Engineer  
and Land Surveyor  
**Fred B. Kerr**  
Certificate No. **3950**