

All distances must be from the outer boundaries of the Section.

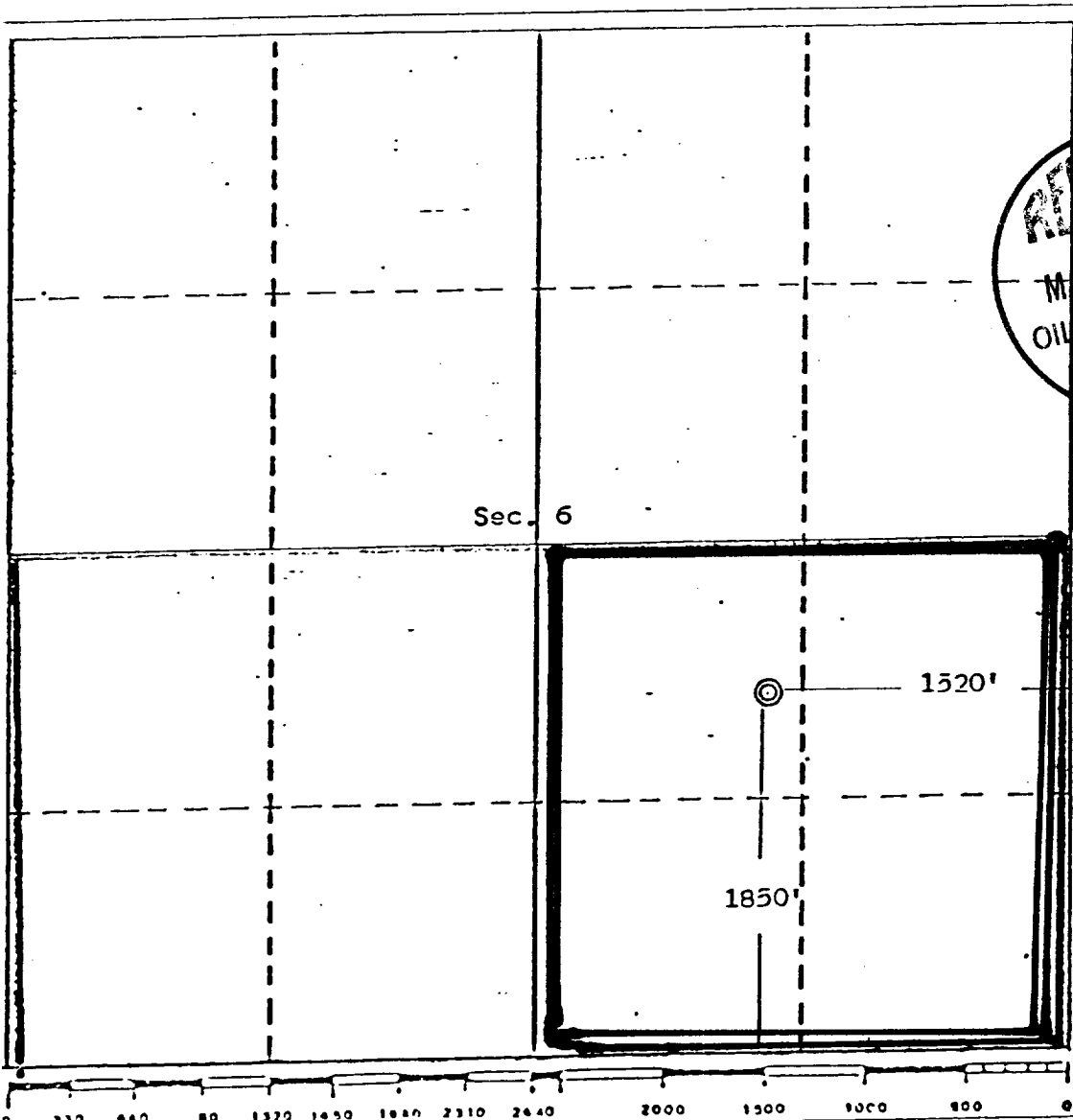
Operator <b>Pioneer Production Corporation</b>			Lease <b>Dustin</b>		Well No. <b>1E</b>
Unit Letter <b>J</b>	Section <b>5</b>	Township <b>2S North</b>	Range <b>12 West</b>	County <b>San Juan</b>	
Actual Footage Location of Well:					
1850 feet from the South line and		1520 feet from the East line			
Ground Level Elev. <b>5484</b>	Producing Formation <b>Chacra</b>		Pool <b>Basin Dakota</b>	Dedicated Acreage: <b>160</b> Acres	

1. Outline the acreage dedicated to the subject well by colored pencil or hachure marks on the plat below.
2. If more than one lease is dedicated to the well, outline each and identify the ownership thereof (both as to working interest and royalty).
3. If more than one lease of different ownership is dedicated to the well, have the interests of all owners been consolidated by communitization, unitization, force-pooling, etc?

☐ Yes ☐ No If answer is "yes," type of consolidation \_\_\_\_\_

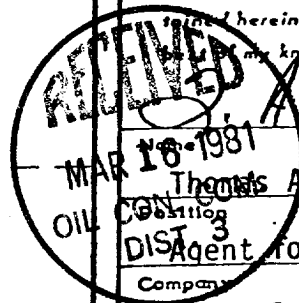
If answer is "no," list the owners and tract descriptions which have actually been consolidated. (Use reverse side of this form if necessary.) \_\_\_\_\_

No allowable will be assigned to the well until all interests have been consolidated (by communitization, unitization, forced-pooling, or otherwise) or until a non-standard unit, eliminating such interests, has been approved by the Division.



## CERTIFICATION

I hereby certify that the information contained herein is true and complete to the best of my knowledge and belief.



*Thomas A. Dugan*  
Thomas A. Dugan  
Agent for Pioneer P. C.  
Company

Dugan Production

Date  
1-9-81

*Edgar L. Risenhoover*  
I hereby certify that the well location shown on this plat was plotted in the field notes of actual surveys made by me or under my supervision, and that the same is true and correct to the best of my knowledge and belief.

Date Surveyed  
December 30, 1980

Registered Professional Engineer  
and/or Land Surveyor

*Edgar L. Risenhoover*  
Certificate No. 3979  
Edgar L. Risenhoover, L.S.

