

NO. OF COPIES RECEIVED	
DISTRIBUTION	
SANTA FE	
FILE	
U.S.G.S.	
LAND OFFICE	
OPERATOR	

5A. Indicate Type of Lease
STATE FFC
5. State Oil & Gas Lease No.

APPLICATION FOR PERMIT TO DRILL, DEEPEN, OR PLUG BACK

1a. Type of Work
b. Type of Well
OIL WELL GAS WELL OTHER
DRILL DEEPEN PLUG BACK
SINGLE ZONE MULTIPLE ZONE

7. Unit Agreement Name Gallegos
Canyon Unit Com "D"
8. Form or Lease Name

2. Name of Operator
AMOCO PRODUCTION COMPANY

9. Well No.
160E

3. Address of Operator
501 Airport Drive, Farmington, NM 87401

10. Field and Pool, or Wildcat
Basin Dakota

4. Location of Well
UNIT LETTER N LOCATED 1110 FEET FROM THE South LINE
AND 1710 FEET FROM West LINE OF SEC. 27 TWP. 29N R. 12W NMPD

11. Section
5320

11. Section
12. County
San Juan

15. Proposed Depth 6216'
15A. Formation Dakota
20. Rotary or C.T. Rotary
21. Elevations (Show whether DI, KI, etc.) 5338' GL
21A. King & States Plug. Bond Statewide
21B. Drilling Contractor Unknown
22. Approx. Date Work will start as soon as permitted

23. PROPOSED CASING AND CEMENT PROGRAM

SIZE OF HOLE	SIZE OF CASING	WEIGHT PER FOOT	SETTING DEPTH	SACKS OF CEMENT	EST. TOP
12 1/4"	8 5/8"	24.0 #	300'	315 sx	Surface
7 7/8"	4 1/2"	11.6 #	6216'	1040 sx	Surface

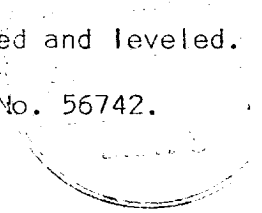
Amoco proposes to drill the above well to further develop the Basin Dakota reservoir. The well will be drilled to the surface casing point using native mud. The well will then be drilled to TD with a low solids nondispersed mud system. Completion design will be based on open hole logs. Copy of all logs will be filed upon completion. Amoco's standard blowout prevention will be employed; see attached drawing for blowout preventer design.

Upon completion the well location will be cleaned and the reserve pit filled and leveled.

Gas produced from this well is dedicated to El Paso Natural Gas, Contract No. 56742.

APPROVAL VALID
FOR 90 DAYS UNLESS
DRILLING COMMENCED,

EXPIRES 8-17-81



IN ABOVE SPACE DESCRIBE PROPOSED PROGRAM; IF PROPOSAL IS TO DEEPEN OR PLUG BACK, GIVE DATA ON PRESENT PRODUCTIVE ZONE AND PROPOSED NEW PRODUCTIVE ZONE. GIVE BLOWOUT PREVENTER PROGRAM, IF ANY.

I hereby certify that the information above is true and complete to the best of my knowledge and belief.

Signed W. L. Babcock Title District Engineer Date 2-13-81

(This space for State Use)

SUPERVISOR DISTRICT # 3

FEB 17 1981

APPROVED BY Frank J. Chang TITLE _____ DATE _____
CONDITIONS OF APPROVAL, IF ANY:

All distances must be from the outer boundaries of the Section.

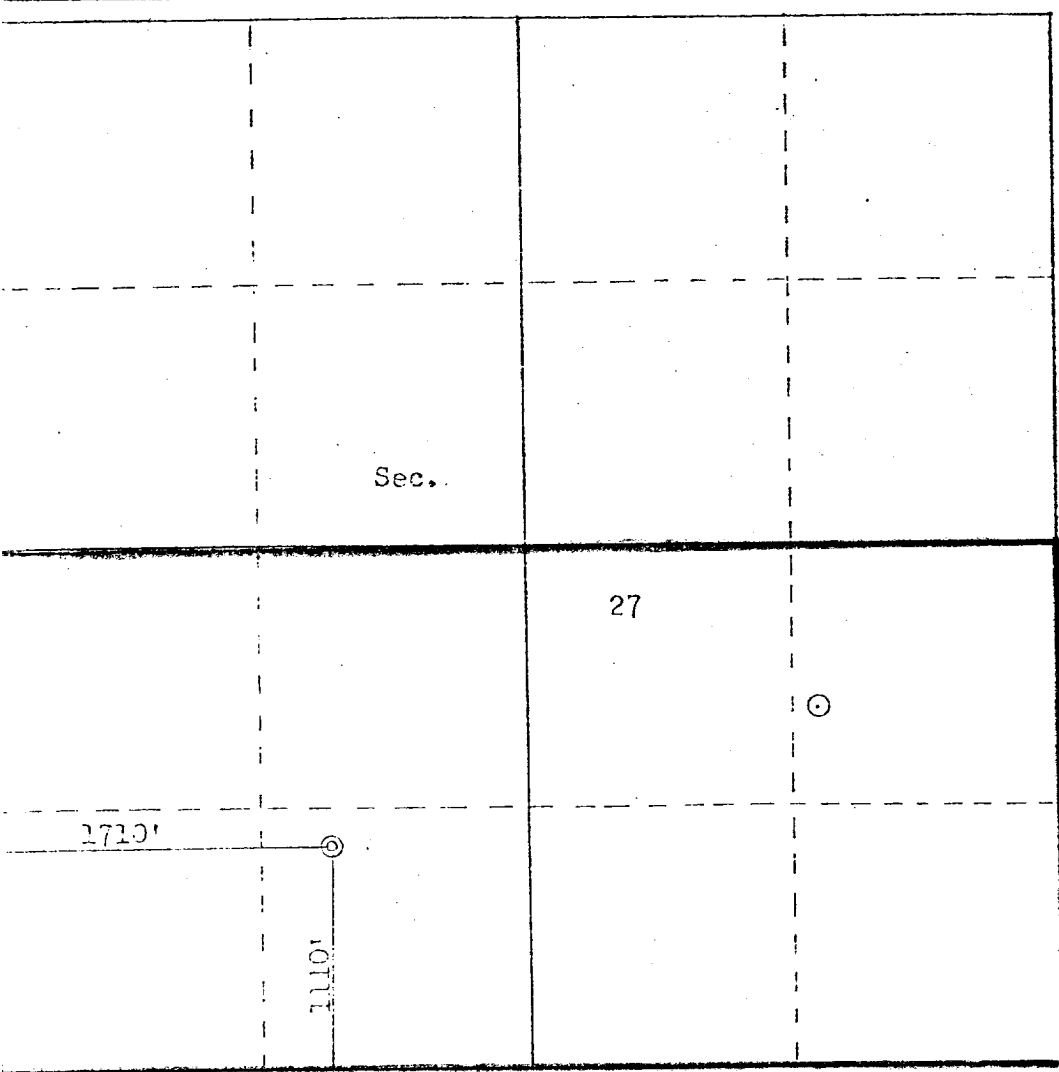
Lessor AMOCO PRODUCTION COMPANY		Lessee CALLEGOS CANYON UNIT COM "D"			Well No. 160E
Section 27	Township 29N	Range 12W	County San Juan		
Well Footage Location of Well:					
111C	feet from the South	Line and	1710	feet from the West	Line
5338	Producing Formation Dakota	Pool Basin Dakota	Dedicated Acreage: 320 Acres		

- Outline the acreage dedicated to the subject well by colored pencil or hatchure marks on the plat below.
- If more than one lease is dedicated to the well, outline each and identify the ownership thereof (both as to working interest and royalty).
- If more than one lease of different ownership is dedicated to the well, have the interests of all owners been consolidated by communitization, unitization, force-pooling, etc?

Yes No If answer is "yes," type of consolidation Communitization

If answer is "no," list the owners and tract descriptions which have actually been consolidated. (Use reverse side of this form if necessary.)

No allowable will be assigned to the well until all interests have been consolidated (by communitization, unitization, forced-pooling, or otherwise) or until a non-standard unit, eliminating such interests, has been approved by the Commission.



Scale: 1"=1000'

CERTIFICATION

I hereby certify that the information contained herein is true and complete to the best of my knowledge and belief.

W. L. Peterson
 Name
 W. L. PETERSON

Position
 DISTRICT ENGINEER

Company
 AMOCO PRODUCTION COMPANY

Date
 2-12-81

I hereby certify that the well location shown on this plat was plotted from field notes of actual surveys made by me or under my supervision, and that the same is true and correct to the best of my knowledge and belief.

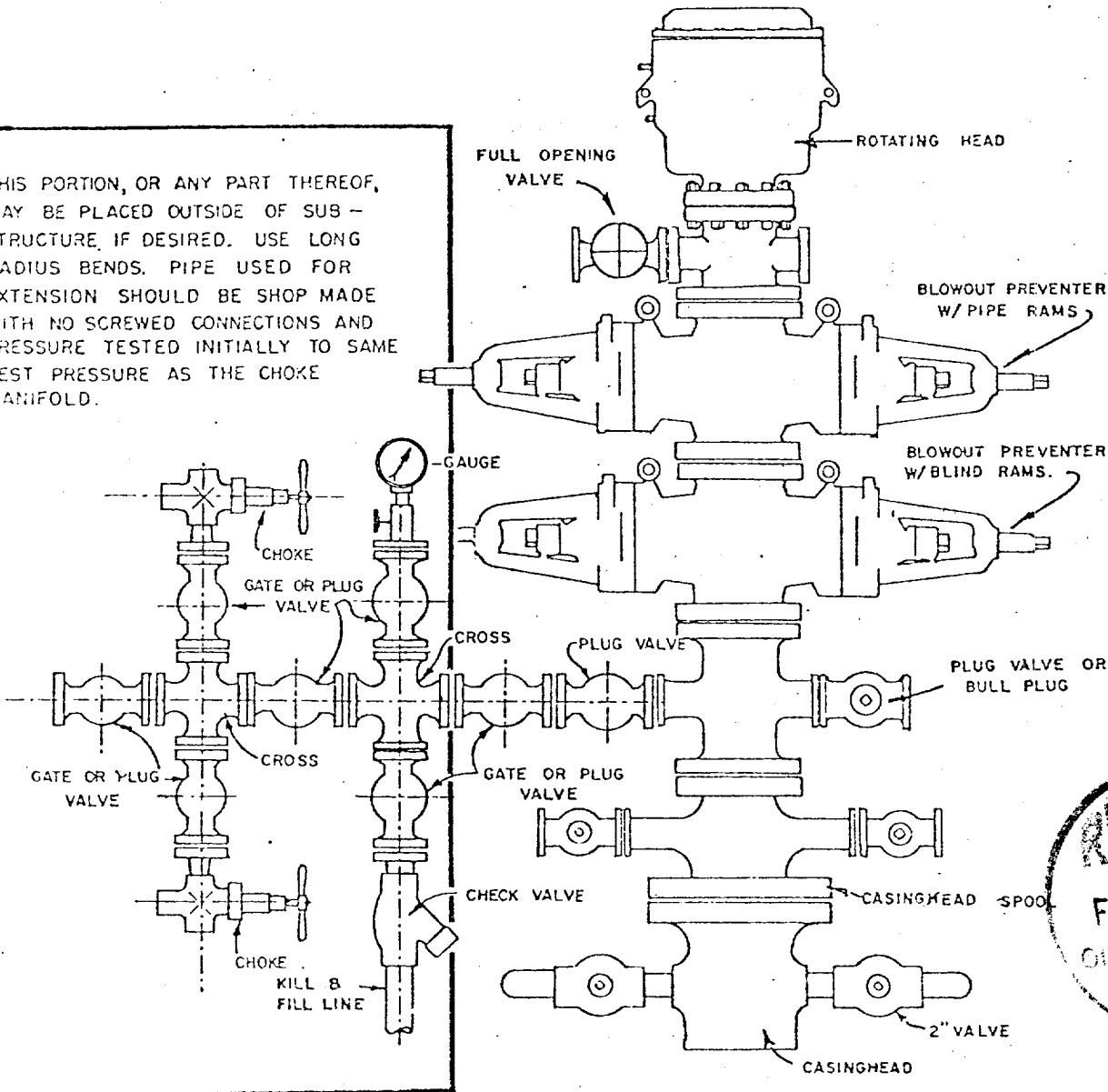
Date Surveyed
 December 15, 1980

Registered Professional Engineer and Land Surveyor
Fred B. Kerr Jr.
 Fred B. Kerr Jr.
 Certif. No. 3950

good condition.

- Equipment through which bit must pass shall be as large as the inside diameter of the casing that is being drilled through.
- Nipple above Blowout Preventer shall be same size or larger than BOP being drilled through.
- All fittings to be flanged.
- Omsco or comparable safety valve must be available on rig floor at all times with proper connection or sub. The I.D. of safety valve should be as great as I.D. of tool joints of drill pipe, or at least as great as I.D. of drill collars.

THIS PORTION, OR ANY PART THEREOF, MAY BE PLACED OUTSIDE OF SUB-STRUCTURE, IF DESIRED. USE LONG RADIUS BENDS. PIPE USED FOR EXTENSION SHOULD BE SHOP MADE WITH NO SCREWED CONNECTIONS AND PRESSURE TESTED INITIALLY TO SAME TEST PRESSURE AS THE CHOKE MANIFOLD.



BLOWOUT PREVENTER HOOKUP

API Series # 900

EXHIBIT D-4

OCTOBER 16, 1969

Operation of BOP by closing both pipe and blind rams will be tested each trip or, on long bit runs, pipe rams will be closed once each 24 hours.