

NO. OF COPIES RECEIVED	
DISTRIBUTION	
SANTA FE	
FILE	
U.S.G.S.	
LAND OFFICE	
OPERATOR	

NEW MEXICO OIL CONSERVATION COMMISSION

Form C-101
Revised 1-1-55

5A. Indicate Type of Lease
STATE <input checked="" type="checkbox"/> FEE <input type="checkbox"/>
5. State Oil & Gas Lease No.

APPLICATION FOR PERMIT TO DRILL, DEEPEN, OR PLUG BACK

1a. Type of Work		7. Unit Agreement Name	
b. Type of Well DRILL <input checked="" type="checkbox"/> DEEPEN <input type="checkbox"/> PLUG BACK <input type="checkbox"/>		8. Farm or Lease Name	
c. Name of Operator Amoco Production Company		State Gas Com BP	
3. Address of Operator 501 Airport Drive, Farmington NM, 87401		9. Well No. 1	
4. Location of Well UNIT LETTER G LOCATED 1770 FEET FROM THE North LINE		10. Field and Pool, or Wildcat Basin Dakota/Otero Chacra	
AND 1740 FEET FROM THE East LINE OF SEC. 32 TWP. 29N RGE. 9W NMPM		12. County San Juan	
19. Proposed Depth 6900'		19A. Formation Dakota/Chacra	
20. Rotary or C.R. Rotary			
21. Elevations (show whether DI, RT, etc.) 6150' GL	21A. Kind & Status Plug. Bond Statewide	21B. Drilling Contractor Unknown	22. Approx. Date Work will start as soon as permitted

PROPOSED CASING AND CEMENT PROGRAM

SIZE OF HOLE	SIZE OF CASING	WEIGHT PER FOOT	SETTING DEPTH	SACKS OF CEMENT	EST. TOP
17 1/2"	13 3/8"	54.5#	300'	150	surface
12 1/4"	8 5/8"	32 #	2525'	700	surface
7 7/8"	5 1/2"	17#	6900'	600	surface

Amoco proposes to drill the above well to further develop the Basin Dakota, and Otero Chacra reservoirs. The well will be drilled to TD with a low solids nondispersed mud system. Completion design will be based on open hole logs. Copy of all logs will be filed upon completion. Amoco's standard blowout prevention will be employed; see attached drawing for blowout preventer design.

Upon completion the well location will be cleaned and the reserve pit filled and leveled.

Gas produced from the Dakota formation is dedicated to El Paso Natural Gas Company under contract No. 56742. The Chacra formation is not dedicated.

DRILLING COMMENCED,

EXPIRES 8-20-81

IN ABOVE SPACE DESCRIBE PROPOSED PROGRAM: IF PROPOSAL IS TO DEEPEN OR PLUG BACK, GIVE DATA ON PRESENT PRODUCTIVE ZONE AND PROPOSED NEW PRODUCTIVE ZONE. GIVE BLOWOUT PREVENTER PROGRAM, IF ANY.

I hereby certify that the information above is true and complete to the best of my knowledge and belief.

Signed W. L. PERSON Title District Engineer Date 2-19-81

(This space for State Use)

APPROVED BY Frank B. Perry TITLE SUPERVISOR DISTRICT # 1 DATE 2-27-1981

CONDITIONS OF APPROVAL, IF ANY:

OIL CONSERVATION DIVISION

STATE OF NEW MEXICO

P. O. BOX 2088

Form C-107

ENERGY AND MINERALS DEPARTMENT

SANTA FE, NEW MEXICO 87501

Revised 10-1-78

All distances must be from the outer boundaries of the Section.

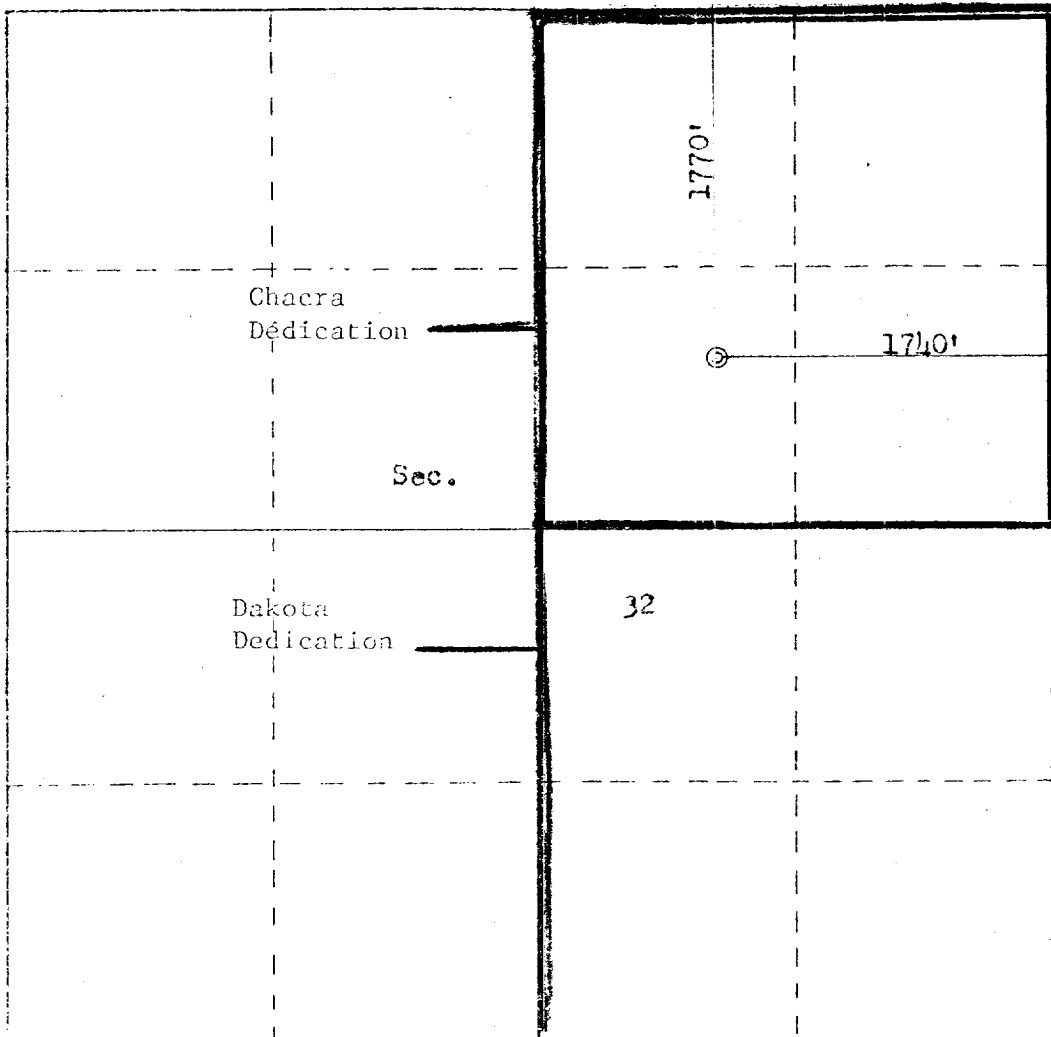
Operator AMOCO PRODUCTION COMPANY			Lease STATE GAS COM "BP"		Well No. 1
Unit Letter G	Section 32	Township 29N	Range 9W	County San Juan	
Actual Footage Location of Well:					
1770 feet from the North line and		1740 feet from the East line			
Ground Level Elev: 6150	Producing Formation Dakota/Chacra	Pool Basin Dakota/Chacra		Dedicated Acreage: 320/160	Acrea

1. Outline the acreage dedicated to the subject well by colored pencil or hatchure marks on the plat below.
2. If more than one lease is dedicated to the well, outline each and identify the ownership thereof (both as to working interest and royalty).
3. If more than one lease of different ownership is dedicated to the well, have the interests of all owners been consolidated by communitization, unitization, force-pooling, etc?

☒ Yes ☐ No If answer is "yes," type of consolidation Communitization

If answer is "no," list the owners and tract descriptions which have actually been consolidated. (Use reverse side of this form if necessary.)

No allowable will be assigned to the well until all interests have been consolidated (by communitization, unitization, forced-pooling, or otherwise) or until a non-standard unit, eliminating such interests, has been approved by the Commission.



Scale: 1"=1000'

CERTIFICATION

I hereby certify that the information contained herein is true and complete to the best of my knowledge and belief.

Wayne L. Peterson

Name
W. L. PETERSON

Position
DISTRICT ENGINEER

Company
AMOCO PRODUCTION COMPANY

Date
2-17-81

FEB 20 1981
I hereby certify that the location shown on this plat was plotted from field notes of actual surveys made by me or under my supervision, and that the same is true and correct to the best of my knowledge and belief.

Date Surveyed
February 13, 1981

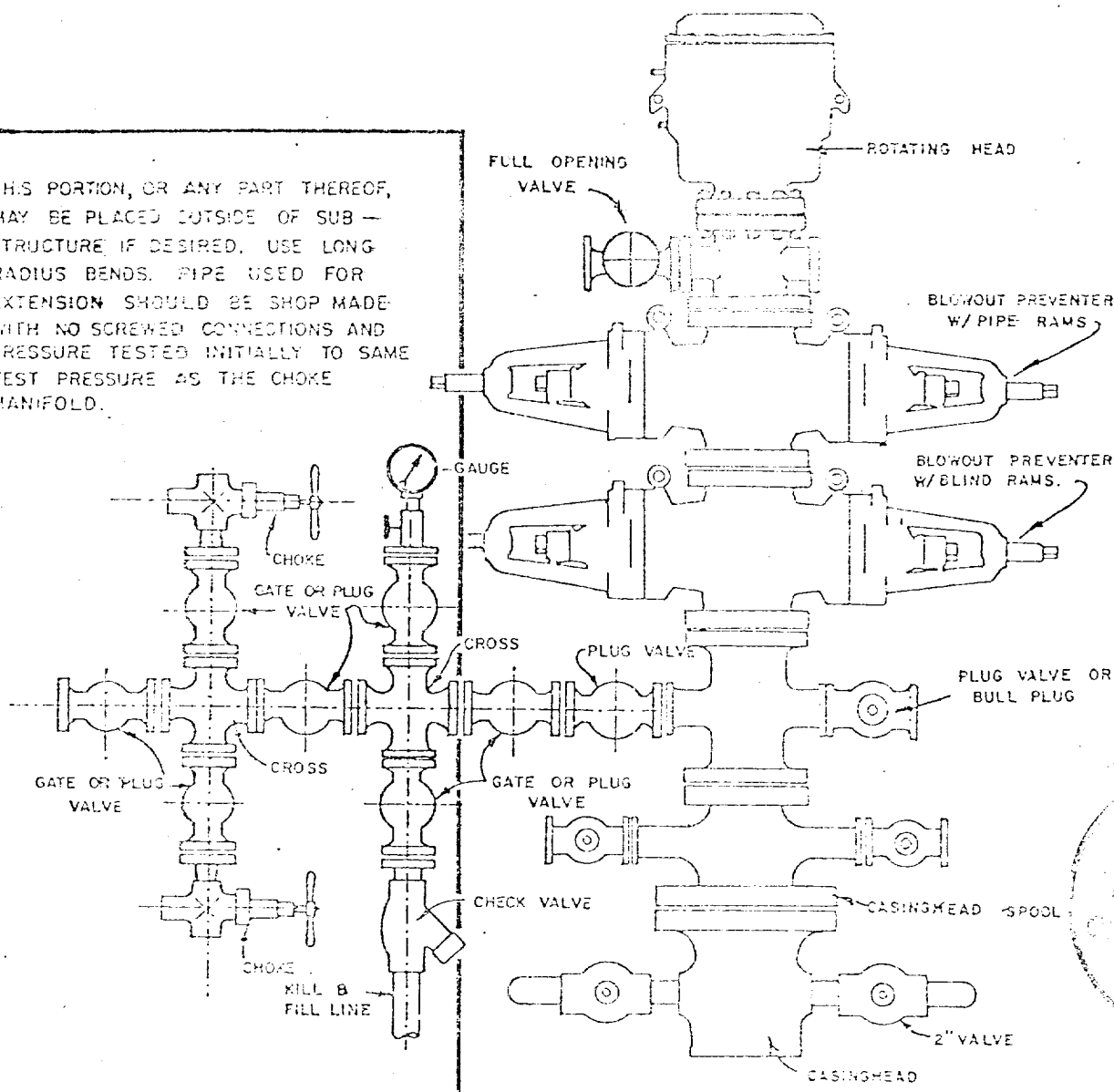
Registered Professional Engineer and
Lands Surveyor

Fred B. Kere Jr.
Fred B. Kere Jr.

Certificate No.
3950

1. Blowout Preventers and Master Valve to be fully operated, and all fittings must be in good condition.
2. Equipment through which bit must pass shall be as large as the inside diameter of the casing that is being drilled through.
3. Nipple above Blowout Preventer shall be same size or larger than BOP being drilled through.
4. All fittings to be flanged.
5. Omsco or comparable safety valve must be available on rig floor at all times with proper connection or sub. The I.D. of safety valve should be as great as I.D. of tool joints of drill pipe, or at least as great as I.D. of drill collars.

THIS PORTION, OR ANY PART THEREOF, MAY BE PLACED OUTSIDE OF SUB-STRUCTURE IF DESIRED. USE LONG RADIUS BENDS. PIPE USED FOR EXTENSION SHOULD BE SHOP MADE WITH NO SCREWED CONNECTIONS AND PRESSURE TESTED INITIALLY TO SAME TEST PRESSURE AS THE CHOKE MANIFOLD.



BLOWOUT PREVENTER HOOKUP

API Series # 900

EXHIBIT D-4

OCTOBER 16, 1969

Operation of BOP by closing both pipe and blind rams will be tested each trip or, on long bit runs, pipe rams will be closed once each 24 hours.