

UNITED STATES
DEPARTMENT OF THE INTERIOR
GEOLOGICAL SURVEY

30-043-25610

APPLICATION FOR PERMIT TO DRILL, DEEPEN, OR PLUG BACK

1a. TYPE OF WORK

DRILL ☒DEEPEN ☐ PLUG BACK ☐

b. TYPE OF WELL

OIL
WELL ☒GAS
WELL ☐OTHER ☐SINGLE
ZONE ☒MULTIPLE
ZONE ☐

2. NAME OF OPERATOR

Union Texas Petroleum Corporation

3. ADDRESS OF OPERATOR

P. O. Box 808 Farmington, New Mexico 87401

4. LOCATION OF WELL (Report location clearly and in accordance with any State requirements.)

At surface 660 ft./South line and 1820 ft./East line

At proposed prod. zone

Same as above

14. DISTANCE IN MILES AND DIRECTION FROM NEAREST TOWN OR POST OFFICE*

7 miles Southeast of Bloomfield, New Mexico

15. DISTANCE FROM PROPOSED*

660 ft.

LOCATION TO NEAREST

PROPERTY OR LEASE LINE, FT.

(Also to nearest drlg. unit line, if any)

500 ft.

18. DISTANCE FROM PROPOSED LOCATION*

TO NEAREST WELL, DRILLING, COMPLETED,
OR APPLIED FOR, ON THIS LEASE, FT.

1097'

16. NO. OF ACRES IN LEASE

2284.30

19. PROPOSED DEPTH

6060 ft.

17. NO. OF ACRES ASSIGNED

TO THIS WELL

40.00

20. ROTARY OR CABLE TOOLS

Rotary

21. ELEVATIONS (Show whether DF, RT, GR, etc.)

5605' GR

DRILLING OPERATIONS AUTHORIZED ARE
SUBJECT TO COMPLIANCE WITH ATTACHED
"GENERAL REQUIREMENTS"

PROPOSED CASING AND CEMENTING PROGRAM

22. APPROX. DATE WORK WILL START*

February 15, 1983

23.

This action is subject to administrative
appeal pursuant to 30 CFR 200.
QUANTITY OF CEMENT

SIZE OF HOLE	SIZE OF CASING	WEIGHT PER FOOT	SETTING DEPTH	QUANTITY OF CEMENT
13-3/4"	9-5/8"	36.0 K-55	300	250 cu. ft.
8-3/4"	7"	23.0 K-55	5230	1400 cu. ft.
6-1/4"	4-1/2"	10.5 K-55	5030 - 6060	150 cu. ft.

We desire to drill 13-3/4" surface hole to approx. 300 ft. using natural mud as a circulating medium. Run new 9-5/8 csg. to TD. Cement with approx. 250 cu. ft. of Class "B" cement circulated to the surface. Pressure test the casing to approx. 800 PSIG for 10 min. Drill 8-3/4" hole to approx. 5230 ft. using a starch base, permaloid, nondispersed mud as the circulating medium. Log the well. Run new 7" casing to TD with a DV tool at approx. 2000 ft. Cement 1st stage w/approx. 750 cu. ft. of 65/35/6 followed by approx. 100 cu. ft. of Class "B" cement. Cement the second stage w/approx. 450 cu. ft. of 65/35/12 followed by approx. 100 cu. ft. of Class "B". Circ. cement to surface. Drill out the DV tool. Pressure test the pipe to 1500 PSIG for 10 min. Drill out w/6-1/4" bit to approx. 6060 ft. using natural gas as the circulating medium. Log the well. Run new 4-1/2" casing to TD and cement w/approx. 150 cu. ft. of 50/50 Poz mix. WOC. Perforate and fracture the Gallup zone. Clean the well up. Run new 2-3/8" EUE, 4.7#, J-55 tbg. to the Gallup zone. Run rod pump and rods. Set a pumping unit and tanks. Test the well and connect to a gathering system. The gas from this well has previously been dedicated to a transporter.

NOTE: Actual cement volumes will be calculated from caliper log.

IN ABOVE SPACE DESCRIBE PROPOSED PROGRAM: If proposal is to deepen or plug back, give data on present productive zone and proposed new productive zone. If proposal is to drill or deepen directionally, give pertinent data on subsurface locations and measured and true vertical depths. Give blowout preventer program, if any.

24.

SIGNED

W. K. Cooper

TITLE Field Operations Mgr.

DATE

2/1/83

(This space for Federal or State office use)

PERMIT NO.

APPROVAL DATE

APPROVED BY

TITLE

CONDITIONS OF APPROVAL, IF ANY:

APPROVED
AS AMENDED

FEB 28 1983

JAMES F. SIMS
DISTRICT ENGINEER

AMCC

All distances must be from the outer boundaries of the Section.

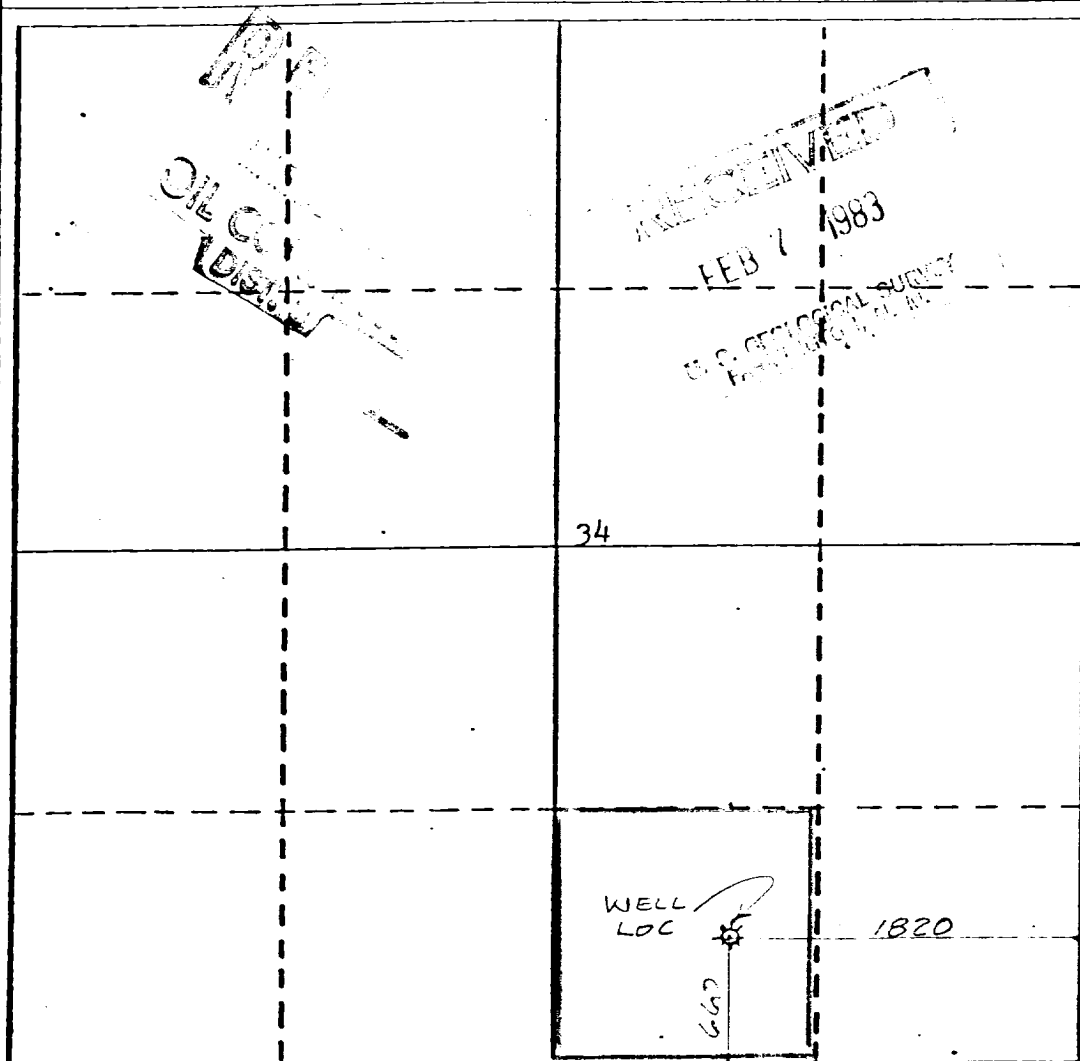
Operator UNION TEXAS PETROLEUM CORPORATION			Lease ZACHRY		Well No. 49
Unit Letter 0	Section 34	Township 29 NORTH	Range 10 WEST	County SAN JUAN	
Actual Footage Location of Well: 660 feet from the SOUTH line and 1820 feet from the EAST line					
Ground Level Elev. 5605	Producing Formation Gallup	Pool Armenta/Gallup Etc.		Dedicated Acreage 40 SE 1/4 Acres	

1. Outline the acreage dedicated to the subject well by colored pencil or hatchure marks on the plat below.
2. If more than one lease is dedicated to the well, outline each and identify the ownership thereof (both as to working interest and royalty).
3. If more than one lease of different ownership is dedicated to the well, have the interests of all owners been consolidated by communitization, unitization, force-pooling, etc?

☐ Yes ☒ No If answer is "yes," type of consolidation _____

If answer is "no," list the owners and tract descriptions which have actually been consolidated. (Use reverse side of this form if necessary.) _____

No allowable will be assigned to the well until all interests have been consolidated (by communitization, unitization, forced-pooling, or otherwise) or until a non-standard unit, eliminating such interests, has been approved by the Division



CERTIFICATION

I hereby certify that the information contained herein is true and complete to the best of my knowledge and belief.

Rudy D. Motto
Name

Rudy D. Motto
Position
Area Field Operations Mgr.

Company
Union Texas Petroleum Corp.

Date
December 7, 1982

I hereby certify that the well location shown on this plat was plotted from field notes of actual surveys made by me or under my supervision, and that the same is true and correct to the best of my knowledge and belief.

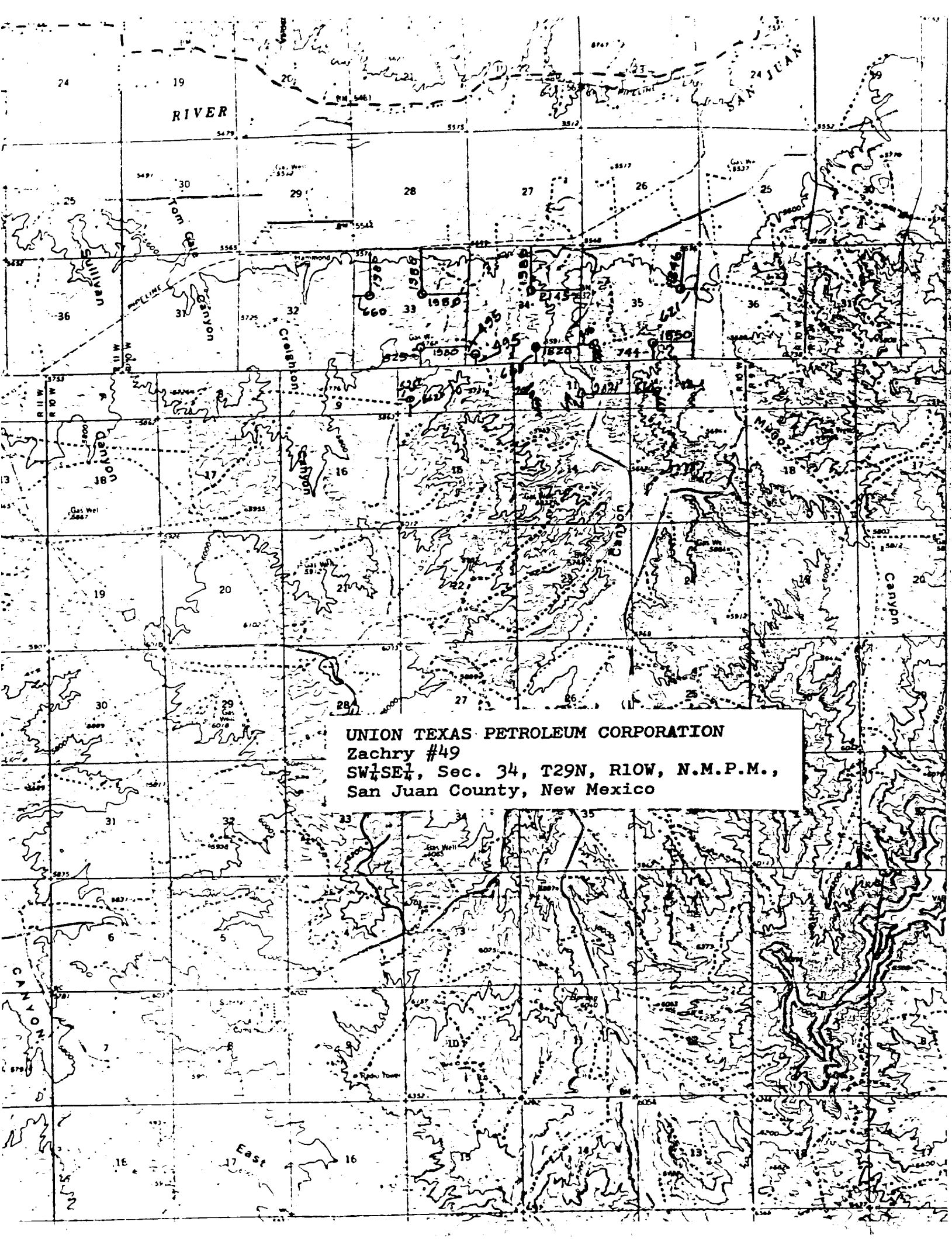
Michael Daly
Date Surveyed

November 15, 1982

Registered Professional Engineer
and/or Land Surveyor

Michael Daly

Certificate No.
5992



UNION TEXAS PETROLEUM CORPORATION
Zachry #49
SW $\frac{1}{4}$ SE $\frac{1}{4}$, Sec. 34, T29N, R10W, N.M.P.M.,
San Juan County, New Mexico