

NO. OF COPIES RECEIVED	
DISTRIBUTION	
SANTA FE	
FILE	
U.S.G.S.	
LAND OFFICE	
OPERATOR	

NEW MEXICO OIL CONSERVATION COMMISSION

AUG 11 1983

OIL CON. DIV.
DIST. 3

30-045-25788

Form C-191
Revised 1-1-65

5A. Indicate Type of Lease

STATE ☐ FILL ☒

5. State Oil & Gas Lease No.

APPLICATION FOR PERMIT TO DRILL, DEEPEN, OR PLUG BACK

1a. Type of Work

DRILL ☒

DEEPEN ☐

PLUG BACK ☐

b. Type of Well

OIL WELL ☒

GAS WELL ☐

OTHER

SINGLE ZONE ☒

MULTIPLE ZONE ☐

2. Name of Operator

Union Texas Petroleum Corporation

3. Address of Operator

P. O. Box 808, Farmington, New Mexico 87499

4. Location of Well

UNIT LETTER I LOCATED 1565 FEET FROM THE South LINE

AND 1040 FEET FROM THE East LINE OF SEC. 20 TWP. 29N RGE. 11W NMPM

7. Unit Agreement Name

8. Farm or Lease Name

Franchini

9. Well No.

1

10. Field and Pool, or Wildcat

Undesignated Gallup

12. County

San Juan

19. Proposed Depth

5800

19A. Formation

Gallup

20. Rotary or C.T.

Rotary

21. Elevations (Show whether DF, RT, etc.)

5439 GR

21A. Kind & Status Plug. Bond

Current \$50,000

21B. Drilling Contractor

22. Approx. Date Work will start

September 1, 1983

23.

PROPOSED CASING AND CEMENT PROGRAM

SIZE OF HOLE	SIZE OF CASING	WEIGHT PER FOOT	SETTING DEPTH	SACKS OF CEMENT	EST. TOP
12-1/4"	8-5/8"	24.0# J-55	300'	240 cu. ft.	Surface
7-7/8"	4-1/2"	11.6# K-55	5800'	2600 cu. ft.	Surface

We desire to drill 12-1/4" surface hole to approx. 300 ft. using natural mud as a circulating medium. Run new 8-5/8", 24.0#, J-55 casing to TD. Cement with approx. 240 cu. ft. Class "B" cement circulated to surface. Pressure test the casing to 800 PSIG. Drill 7-7/8" hole to TD of approx. 5800 ft. using a permaloid, nondispersed mud as the circulating medium. Log the well. Run new 4-1/2", 11.6#, K-55 casing to TD with DV tool at approx. 2150 ft. Cement first stage with approx. 1300 cu. ft. of 65/35/6 followed by 100 cu. ft. 50/50 Poz mix. Cement second stage with approx. 1200 cu. ft. 65/35/12 Poz circulated to surface. Drill out the DV tool and pressure test the casing to 1500 PSIG. Perforate and fracture the Gallup zone. Clean the well up. Run new 2-3/8", EUE, 4.7#, J-55 tubing to the Gallup zone. Run rod pump and rods. Set a pumping unit and tanks. Test the well and connect to a gathering system.

The gas from this well has been dedicated to a transporter.

APPROVAL EXPIRES 2-11-84
UNLESS PERMITTING IS COMPLETED.
SPUD NOTICE MUST BE SUBMITTED
WITHIN 10 DAYS.

NOTE: Actual cement volumes will be calculated from caliper logs.

IN ABOVE SPACE DESCRIBE PROPOSED PROGRAM; IF PROPOSAL IS TO DEEPEN OR PLUG BACK, GIVE DATA ON PRESENT PRODUCTIVE ZONE AND PROPOSED NEW PRODUCTIVE ZONE. GIVE BLOWOUT PREVENTER PROGRAM, IF ANY.

I hereby certify that the information above is true and complete to the best of my knowledge and belief.

Signed W. R. Cooper Title Field Operations Manager Date August 11, 1983

(This space for State Use)

APPROVED BY [Signature] TITLE SUPERVISOR DISTRICT # 3 DATE AUG 11 1983

CONDITIONS OF APPROVAL, IF ANY:

Hold C104 for NSL

All distances must be from the outer boundaries of the Section.

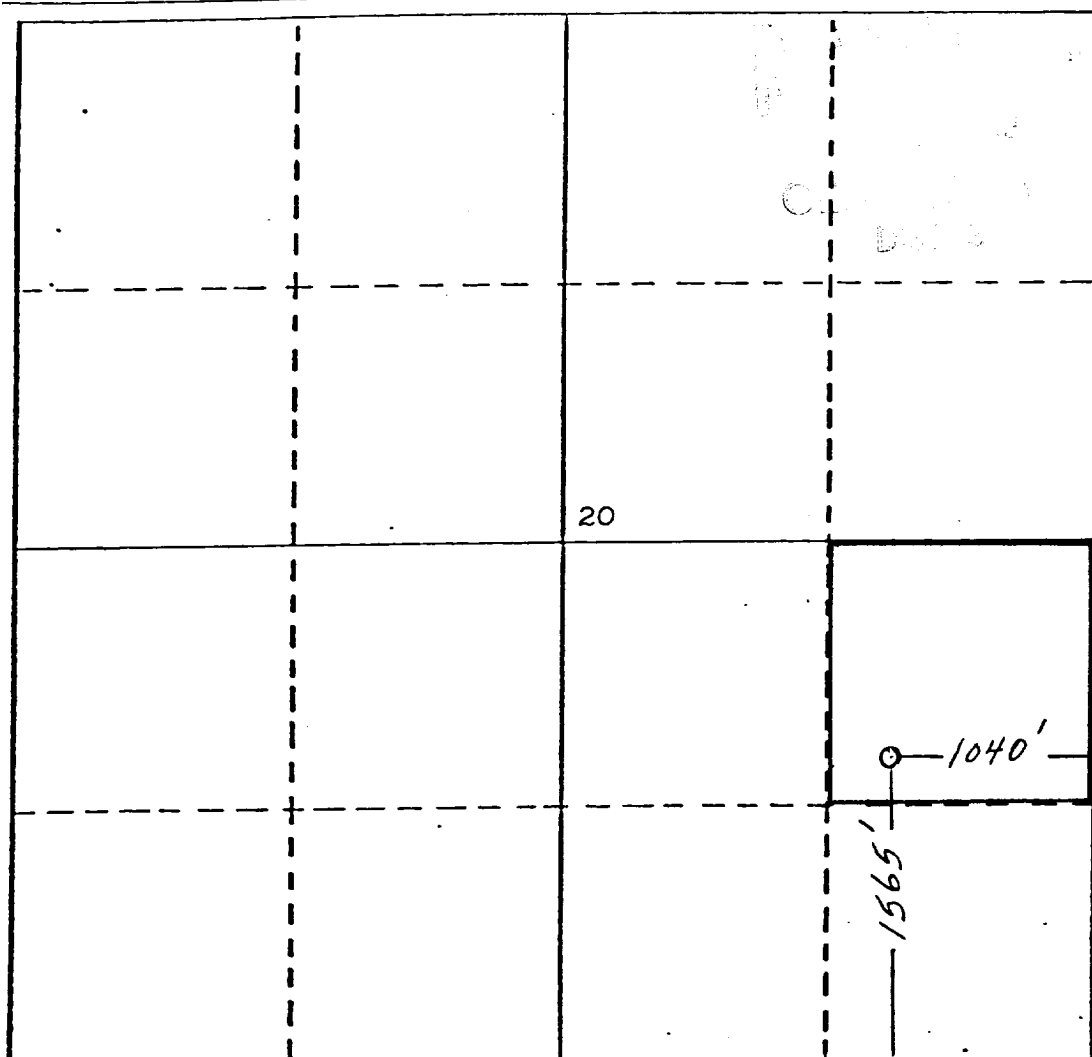
Operator UNION TEXAS PETROLEUM CORPORATION			Lease FRANCHINI		Well No. 1
Unit Letter I	Section 20	Township 29 NORTH	Range 11 WEST	County SAN JUAN	
Actual Footage Location of Well: 1565 feet from the SOUTH line and 1040 feet from the EAST line					
Ground Level Elev. 5439	Producing Formation GALLUP		Pool UNDESIGNATED		Dedicated Acreage: NE SE 40 Acres

1. Outline the acreage dedicated to the subject well by colored pencil or hatchure marks on the plat below.
2. If more than one lease is dedicated to the well, outline each and identify the ownership thereof (both as to working interest and royalty).
3. If more than one lease of different ownership is dedicated to the well, have the interests of all owners been consolidated by communitization, unitization, force-pooling, etc?

☐ Yes ☒ No If answer is "yes," type of consolidation _____

If answer is "no," list the owners and tract descriptions which have actually been consolidated. (Use reverse side of this form if necessary.) _____

No allowable will be assigned to the well until all interests have been consolidated (by communitization, unitization, forced-pooling, or otherwise) or until a non-standard unit, eliminating such interests, has been approved by the Division



CERTIFICATION

I hereby certify that the information contained herein is true and complete to the best of my knowledge and belief.

Rudy D. Motto
Name

Rudy D. Motto

Position

Area Field Manager

Company

Union Texas Petroleum Corp.

Date

11-3-82

I hereby certify that the well location shown on this plat was plotted from field notes of actual surveys made by me or under my supervision, and that the same is true and correct to the best of my knowledge and belief.

Michael Daly
Date Surveyed

October 29, 1982

Registered Professional Engineer and/or Land Surveyor

Michael Daly
Certificate No.

5992

