

UNITED STATES
DEPARTMENT OF THE INTERIOR
BUREAU OF LAND MANAGEMENT

APPLICATION FOR PERMIT TO DRILL, DEEPEN, OR PLUG BACK

1a. TYPE OF WORK

DRILL ☒

DEEPEN ☐

PLUG BACK ☐

b. TYPE OF WELL

OIL
WELL ☐

GAS
WELL ☒

OTHER

SINGLE
ZONE ☒

MULTIPLE
ZONE ☐

2. NAME OF OPERATOR

Southland Royalty Company

3. ADDRESS OF OPERATOR

P.O. Drawer 570, Farmington, New Mexico 87499

4. LOCATION OF WELL (Report location clearly and in accordance with any State requirements.)

At surface

1450' FNL & 1830' FWL

At proposed prod. zone

MAY 23 1984

14. DISTANCE IN MILES AND DIRECTION FROM NEAREST TOWN OR POST OFFICE

5 miles West of Blanco, New Mexico

15. DISTANCE FROM PROPOSED*

LOCATION TO NEAREST

PROPERTY OR LEASE LINE, FT.

(Also to nearest drlg. unit line, if any)

1200'

18. DISTANCE FROM PROPOSED LOCATION*

TO NEAREST WELL, DRILLING, COMPLETED,

OR APPLIED FOR, ON THIS LEASE, FT.

300'

16. NO. OF ACRES IN LEASE

2336.05

19. PROPOSED DEPTH

3265'

17. NO. OF ACRES ASSIGNED

TO THIS WELL

160 158.38

20. ROTARY OR CABLE TOOLS

Rotary

21. ELEVATIONS (Show whether DF, RT, GR, etc.)

5765' GL

DRILLING OPERATIONS AUTHORIZED ARE
SUBJECT TO COMPLIANCE WITH ATTACHED

22. APPROX. DATE WORK WILL START*

July 15, 1984

23. GENERAL REQUIREMENTS*

This action is subject to administrative
appeal pursuant to 30 CFR 290.

SIZE OF HOLE	SIZE OF CASING	WEIGHT PER FOOT	SETTING DEPTH	QUANTITY OF CEMENT
12-1/4"	New 8-5/8"	24#, H-40	200'	165 cu.ft. (Circulate to surface)
6-3/4"	New 2-7/8"	6.5#, J-55	3265'	723 cu.ft. (Cover Ojo Alamo)

Surface formation is Nacimiento.

Top of Ojo Alamo sand is at 910'.

Top of Pictured Cliffs sand is at 2130'.

Fresh water mud will be used to drill from surface to total depth.

It is anticipated that an IES will be run from total depth to surface casing and a

GR-Density Log will be run from total depth to surface casing.

No abnormal pressures or poisonous gases are anticipated in this well.

It is expected that this well will be drilled before August 15, 1984.

This depends on time required for approvals, rig availability and the weather.

Gas is dedicated.

IN ABOVE SPACE DESCRIBE PROPOSED PROGRAM: If proposal is to deepen or plug back, give data on present productive zone and proposed new productive zone. If proposal is to drill or deepen directionally, give pertinent data on subsurface locations and measured and true vertical depths. Give blowout preventer program, if any.

24.

SIGNED

TITLE District Engineer

DATE

May 22, 1984

(This space for Federal or State office use)

PERMIT NO.

APPROVAL DATE

APPROVED BY

CONDITIONS OF APPROVAL, IF ANY

TITLE

RECEIVED
JUN 01 1984
OIL CON. DIV.
DIST. 3

NMOCC

*See Instructions On Reverse Side

APPROVED
DATE May 22, 1984
AS AMENDED
MAY 31 1984
John L. Lucker
AREA MANAGER
FARMINGTON RESOURCE AREA

OIL CONSERVATION DIVISION

STATE OF NEW MEXICO
ENERGY AND MINERALS DEPARTMENTP. O. BOX 2088
SANTA FE, NEW MEXICO 87501Form C-107
Revised 10-1-78

All distances must be from the outer boundaries of the Section.

Operator SOUTHLAND ROYALTY COMPANY			Lease HARE		Well No. 21
Unit Letter F	Section 15	Township 29N	Range 10W	County San Juan	
Actual Footage Location of Well: 1450 feet from the North line and 1830 feet from the West line					
Ground Level Elev. 5765' GL	Producing Formation Chacra	Pool Otero	Dedicated Acreage: 160.15838 Acres		

1. Outline the acreage dedicated to the subject well by colored pencil or hachure marks on the plat below.
2. If more than one lease is dedicated to the well, outline each and identify the ownership thereof (both as to working interest and royalty).
3. If more than one lease of different ownership is dedicated to the well, have the interests of all owners been consolidated by communitization, unitization, force-pooling, etc?

☐ Yes ☐ No If answer is "yes," type of consolidation _____

If answer is "no," list the owners and tract descriptions which have actually been consolidated. (Use reverse side of this form if necessary.) _____

No allowable will be assigned to the well until all interests have been consolidated (by communitization, unitization, forced-pooling, or otherwise) or until a non-standard unit, eliminating such interests, has been approved by the Commission.

	RECEIVED JUN 01 1984 OIL CON. DIV. DIST. 3
	RECEIVED 15 MAY 23 1984 BUREAU OF LAND MANAGEMENT FARMINGTON RESOURCE AREA

Scale: 1"=1000'

CERTIFICATION

I hereby certify that the information contained herein is true and complete to the best of my knowledge and belief.

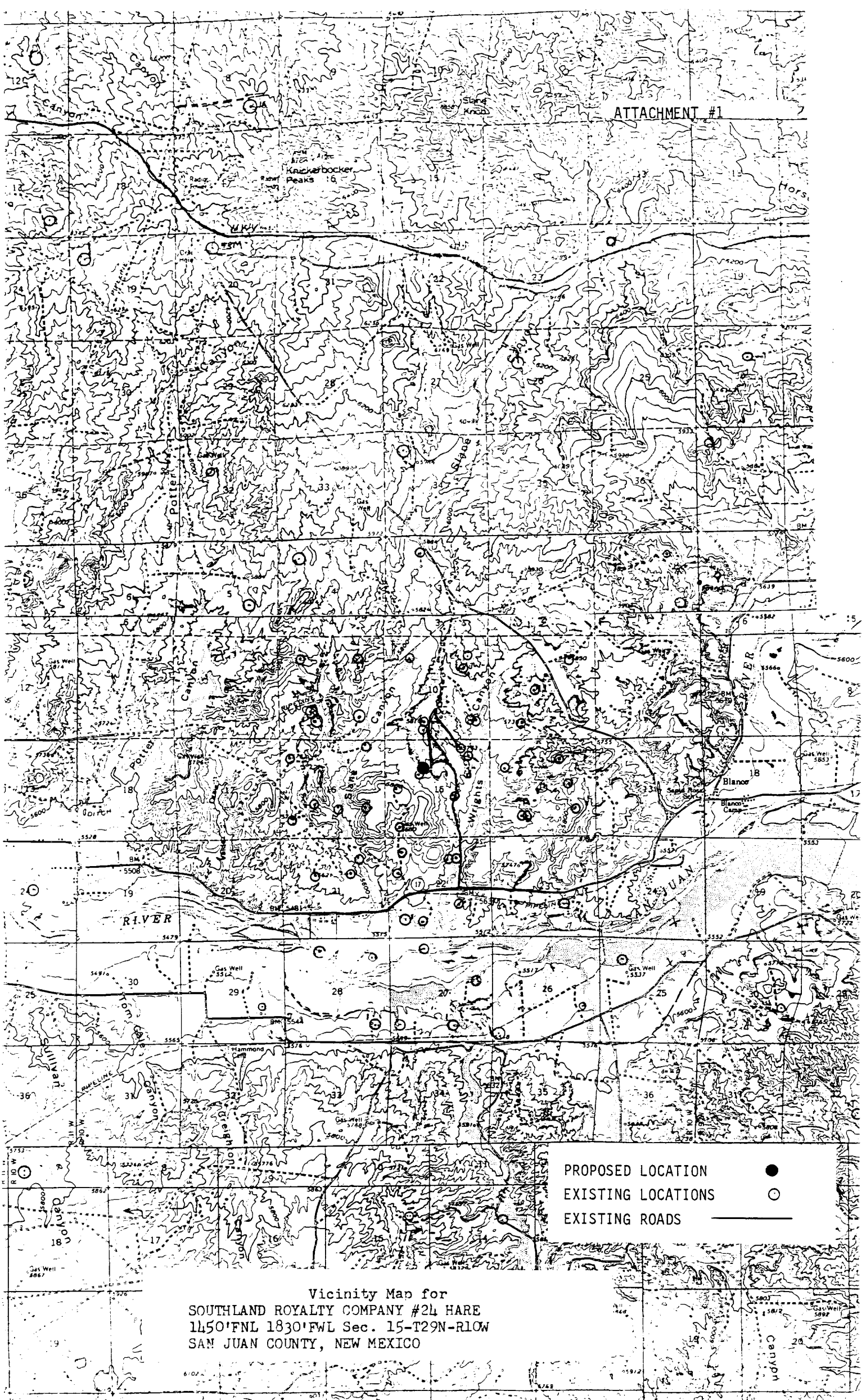
Name
C. Terry Hobbs
Position
District Engineer
Company
Southland Royalty Company
Date
May 22, 1984

I hereby certify that the well location shown on this plat was plotted from field notes of actual surveys made by me or under my supervision, and that the same is true and correct to the best of my knowledge and belief.

Date Surveyed
March 27, 1984
Registered Professional Engineer
and Land Surveyor.
Fred B. Kerr Jr.

Certificate No.
3950

ATTACHMENT #1



Vicinity Map for
SOUTHLAND ROYALTY COMPANY #24 HARE
11450'FNL 1830'FWL Sec. 15-T29N-R10W
SAN JUAN COUNTY, NEW MEXICO