

UNITED STATES  
DEPARTMENT OF THE INTERIOR  
BUREAU OF LAND MANAGEMENT

RECEIVED  
SUBMITTING OFFICE  
(Other instructions on  
reverse side)

APR 24 1985

Form approved.  
Budget Bureau No. 1004-0136  
Expires August 31, 1985

APPLICATION FOR PERMIT TO DRILL, DEEPEN, OR PLUG BACK

1A. TYPE OF WORK  
DRILL ☒ DEEPEN ☐ PLUG BACK ☐

B. TYPE OF WELL  
OIL WELL ☒ GAS WELL ☐ OTHER ☐ SINGLE ZONE ☒ MULTIPLE ZONE ☐

2. NAME OF OPERATOR  
Amoco Production Co.

3. ADDRESS OF OPERATOR  
501 Airport Drive, Farmington, N M 87401

4. LOCATION OF WELL (Report location clearly and in accordance with any State requirements.)  
At surface  
1190' FSL x 1520' FWL  
At proposed prod. zone same

11. SEC., T., R., M., OR BLK. AND SURVEY OR AREA  
SE/SW Sec. 19, T29N, R16W

12. COUNTY OR PARISH  
San Juan

13. STATE  
N.M.

14. DISTANCE IN MILES AND DIRECTION FROM NEAREST TOWN OR POST OFFICE  
9 miles southeast of Shiprock

15. DISTANCE FROM PROPOSED LOCATION TO NEAREST PROPERTY OR LEASE LINE, FT. (Also to nearest drg. unit line, if any)  
1190'

16. NO. OF ACRES IN LEASE  
4160

17. NO. OF ACRES ASSIGNED TO THIS WELL  
40

18. DISTANCE FROM PROPOSED LOCATION TO NEAREST WELL, DRILLING, COMPLETED, OR APPLIED FOR, ON THIS LEASE, FT.  
220' NE

19. PROPOSED DEPTH  
6948'

20. ROTARY OR CABLE TOOLS  
Rotary

21. ELEVATIONS (Show whether DF, RT, GR, etc.)  
5095' GR

22. APPROX. DATE WORK WILL START  
As soon as permitted

23. PROPOSED PROGRAM  
DRILLING OPERATIONS AUTHORIZED ARE  
SUBJECT TO COMPLIANCE WITH ATTACHED

RECEIVED  
MAR 23 1985  
BUREAU OF LAND MANAGEMENT  
FARMINGTON RESOURCE AREA

This action is subject to administrative appeal pursuant to 36 CFR 290.

SIZE OF HOLE	SIZE OF CASING	WEIGHT PER FOOT	SETTING DEPTH	
17-1/2"	13-3/8"	48#, H-40	300'	520 ft <sup>3</sup> Class B
12-1/4"	9-5/8"	36#, K-55	2300'	1830 ft <sup>3</sup> Class B Poz mix
8-3/4"	7"	26#, K-55	6948'	1347 ft <sup>3</sup> Class B Poz mix
				77 ft <sup>3</sup> Class B

This string may be two staged but the cement types and volumes will remain the same.

Amoco proposes to drill the above well to further develop the Hogback reservoir. The well will be drilled to the surface casing point using native mud. The well will then be drilled to TD with a low solids nondispersed mud system. Completion design will be based on open hole logs. Copy of all logs will be filed upon completion. Amoco's standard blowout prevention will be employed; see attached drawing for blowout preventer design. Upon completion the well site will be cleaned and the reserve pit filled and leveled. The gas from this well is undicated at this time.

IN ABOVE SPACE DESCRIBE PROPOSED PROGRAM: If proposal is to deepen or plug back, give data on present productive zone and proposed new productive zone. If proposal is to drill or deepen directionally, give pertinent data on subsurface locations and measured and true vertical depths. Give blowout preventer program, if any.

24. SIGNED W. J. Holcomb TITLE District Manager DATE 3/14/85

(This space for Federal or State office use)

PERMIT NO. \_\_\_\_\_ APPROVAL DATE \_\_\_\_\_

APPROVED BY \_\_\_\_\_ TITLE \_\_\_\_\_ DATE APR 22 1985

CONDITIONS OF APPROVAL, IF ANY:

NMOCC

\*See Instructions On Reverse Side

M. MILLENBACH  
AREA MANAGER

All distances must be from the outer boundaries of the Section.

Operator <b>AMOCO PRODUCTION COMPANY</b>			Lease <b>USG SECTION 19</b>		Well No. <b>40</b>
Unit Letter <b>N</b>	Section <b>19</b>	Township <b>29N</b>	Range <b>16W</b>	County <b>San Juan</b>	
Actual Footage Location of Well: <b>1190</b> feet from the <b>South</b> line and <b>1520</b> feet from the <b>West</b> line					
Ground Level Elev: <b>5095</b>	Producing Formation <b>Hogback</b>		Pool <b>Hogback</b>		Dedicated Acreage: <b>40</b> Acres

1. Outline the acreage dedicated to the subject well by colored pencil or hatchure marks on the plat below.
2. If more than one lease is dedicated to the well, outline each and identify the ownership thereof (both as to working interest and royalty).
3. If more than one lease of different ownership is dedicated to the well, have the interests of all owners been consolidated by communitization, unitization, force-pooling, etc?  
☐ Yes ☒ No If answer is "yes," type of consolidation \_\_\_\_\_

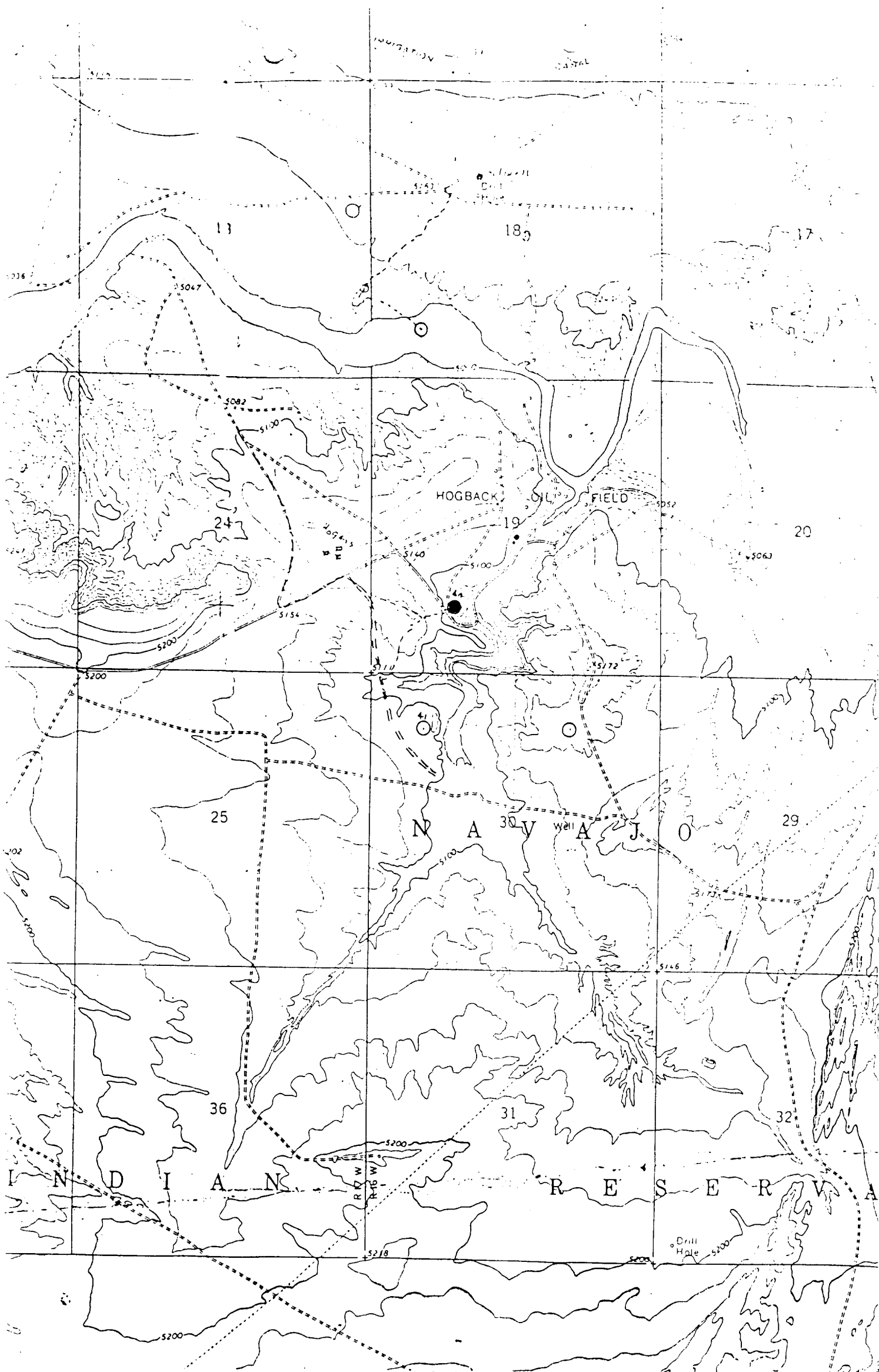
If answer is "no," list the owners and tract descriptions which have actually been consolidated. (Use reverse side of this form if necessary.) \_\_\_\_\_

No allowable will be assigned to the well until all interests have been consolidated (by communitization, unitization, forced-pooling, or otherwise) or until a non-standard unit, eliminating such interests, has been approved by the Commission.

<b>RECEIVED</b> APR 24 1985 OIL CON. DIV. DIST. 3 Sec.		<b>RECEIVED</b> MAR 28 1985 BUREAU OF LAND MANAGEMENT FARMINGTON RESOURCE AREA	
1520'		19	
1190'		1190'	

Scale: 1"=1000'

<b>CERTIFICATION</b> I hereby certify that the information contained herein is true and complete to the best of my knowledge and belief. <b>B.D. Shaw</b>	
Name	B.D. Shaw
Position	Adm. Supervisor
Company	Amoco Production Company
Date	8-24-84
I hereby certify that the well location shown on this plat was plotted from field notes of actual surveys made by me or under my supervision, and that the same is true and correct to the best of my knowledge and belief.	
Date Surveyed	June 18, 1984
Registered Professional Engineer and Land Surveyor	<b>Fred. B. Kerr Jr.</b>
Certificate No.	12345



Vicinity Map for  
 AMOCO PRODUCTION CO. #40 USG SECTION 19  
 1190'FSL 1520'FWL Sec. 19-T29N-R16W  
 SAN JUAN COUNTY, NEW MEXICO