

UNITED STATES
DEPARTMENT OF THE INTERIOR
BUREAU OF LAND MANAGEMENT

SUBMIT IN TRIPLICATE*
(Other instructions on
reverse side)

Form approved.
Budget Bureau No. 1004-0136
Expires August 31, 1985

30-045-27538

APPLICATION FOR PERMIT TO DRILL, DEEPEN, OR PLUG BACK

1a. TYPE OF WORK

DRILL ☒

DEEPEN ☐

PLUG BACK ☐

b. TYPE OF WELL

OIL
WELL ☐

GAS
WELL ☒

OTHER

Coal Seam

SINGLE
ZONE ☒

MULTIPLE
ZONE ☐

2. NAME OF OPERATOR

Amoco Production Company 778

3. ADDRESS OF OPERATOR

P. O. Box 800 Denver, Colorado 80201 ATTN: J.L. Hampton

4. LOCATION OF WELL (Report location clearly and in accordance with any State requirements.)

At surface

1040' FNL, 790' FEL

At proposed prod. zone
same

14. DISTANCE IN MILES AND DIRECTION FROM NEAREST TOWN OR POST OFFICE*

20.19 miles to Aztec, NM

10. DISTANCE FROM PROPOSED*
LOCATION TO NEAREST
PROPERTY OR LEASE LINE, FT.
(Also to nearest drilg. unit lide, if any)

790'

16. NO. OF ACRES IN LEASE

1447.31

17. NO. OF ACRES ASSIGNED
TO THIS WELL

320 E/2

18. DISTANCE FROM PROPOSED LOCATION*
TO NEAREST WELL, DRILLING, COMPLETED,
OR APPLIED FOR, ON THIS LEASE, FT.

19. PROPOSED DEPTH
see attached plan
3369' TD

20. ROTARY OR CABLE TOOLS

Rotary

21. ELEVATIONS (Show whether DF, RT, GR, etc.)

6404' GR

22. APPROX. DATE WORK WILL START*

As soon as permitted

23. PROPOSED CASING AND CEMENTING PROGRAM

SIZE OF HOLE	SIZE OF CASING	WEIGHT PER FOOT	SETTING DEPTH	QUANTITY OF CEMENT
12 1/4"	9 5/8"	36#	250'	200 cf Class B (cement to surface)
8 3/4"	7"	20#	2948'	825 cf Class B (cement to surface)
6 1/4"	5 1/2"	23#	3369' (TD)	none

Notice of Staking was submitted: 9/7/89

Lease Description:

T 29N, R8W

Section 1: all

Section 3: all

Section 12: E/2

Section 13: N/2

T30N, R8W

Section 7: W/2 E/2, E/2 SW/4

Section 17: W/2 SW/4

Section 18: all

RECEIVED

NOV 29 1989

OIL CON. DIV
DIST. 3

IN ABOVE SPACE DESCRIBE PROPOSED PROGRAM: If proposal is to deepen or plug back, give data on present productive zone and proposed new productive zone. If proposal is to drill or deepen directionally, give pertinent data on subsurface locations and measured and true vertical depths. Give blowout preventer program, if any.

24. SIGNED J. L. Hampton TITLE Sr. Staff Admin. Superv. DATE 9/26/89
(This space for Federal or State office use)

PERMIT NO. _____ APPROVAL DATE _____

APPROVED BY _____ TITLE _____
CONDITIONS OF APPROVAL, IF ANY:

Will 3-1-89 For Florence 140

Permit cancellation See Instructions On Reverse Side

Submit to Appropriate
District Office
State Lease - 4 copies
Fee Lease - 3 copies

State of New Mexico
Energy, Minerals and Natural Resources Department

Form C-102
Revised 1-1-89

OIL CONSERVATION DIVISION

P.O. Box 2088
Santa Fe, New Mexico 87504-2088

DISTRICT I
P.O. Box 1980, Hobbs, NM 88240

DISTRICT II
P.O. Drawer DD, Artesia, NM 88210

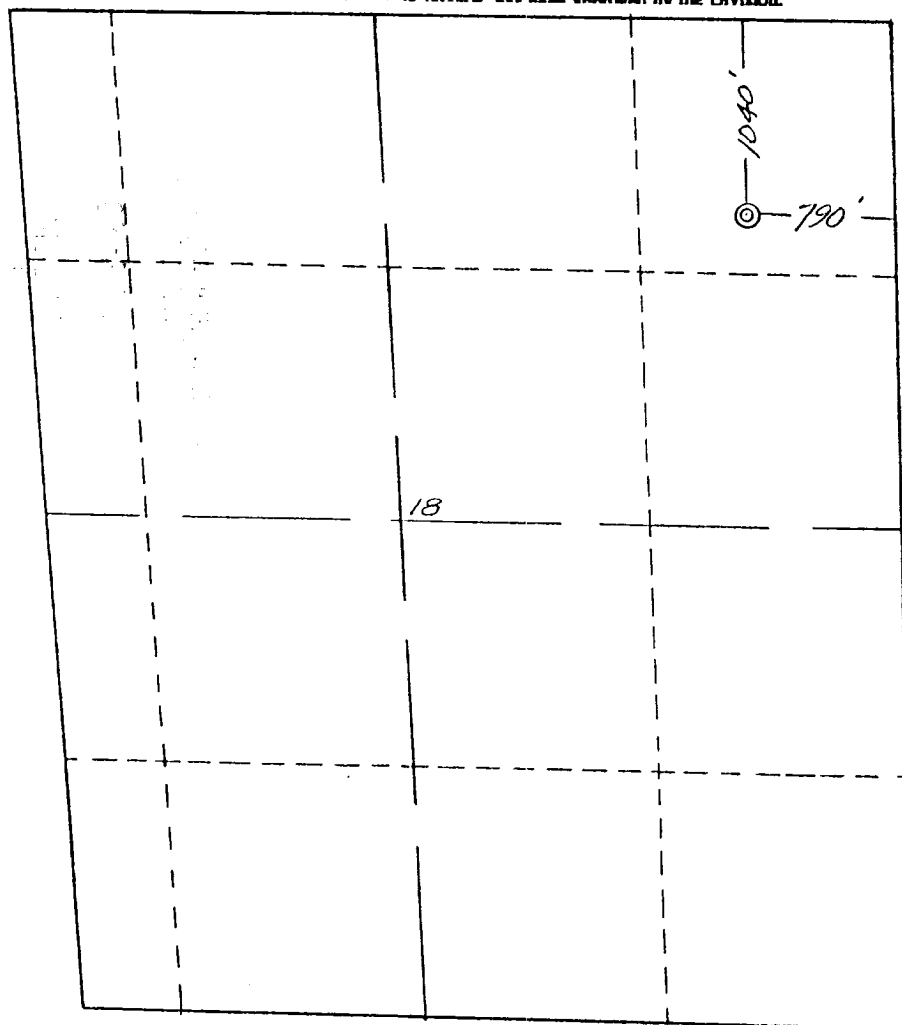
DISTRICT III
1000 Rio Brazos Rd., Aztec, NM 87410

WELL LOCATION AND ACREAGE DEDICATION PLAT

All Distances must be from the outer boundaries of the section

Operator AMOCO PRODUCTION COMPANY			Lease FLORANCE /X/		Well No. # 1
Unit Letter A	Section 18	Township 30 NORTH	Range 8 WEST	County SAN JUAN	NMPM
Actual Footage Location of Well: 1040 feet from the NORTH line and 790 feet from the EAST line					
Ground level Elev. 6404	Producing Formation Fruitland		Pool Basin Fruitland Coal Gas.		Dedicated Acreage: E/2 320 Acres

- Outline the acreage dedicated to the subject well by colored pencil or hachure marks on the plat below.
- If more than one lease is dedicated to the well, outline each and identify the ownership thereof (both as to working interest and royalty).
- If more than one lease of different ownership is dedicated to the well, have the interest of all owners been consolidated by communitization, unitization, force-pooling, etc.?
☐ Yes ☐ No If answer is "yes" type of consolidation _____
If answer is "no" list the owners and tract descriptions which have actually been consolidated. (Use reverse side of this form if necessary).
No allowable will be assigned to the well until all interests have been consolidated (by communitization, unitization, forced-pooling, or otherwise) has been approved by the Division.



OPERATOR CERTIFICATION

I hereby certify that the information contained herein is true and complete to the best of my knowledge and belief.

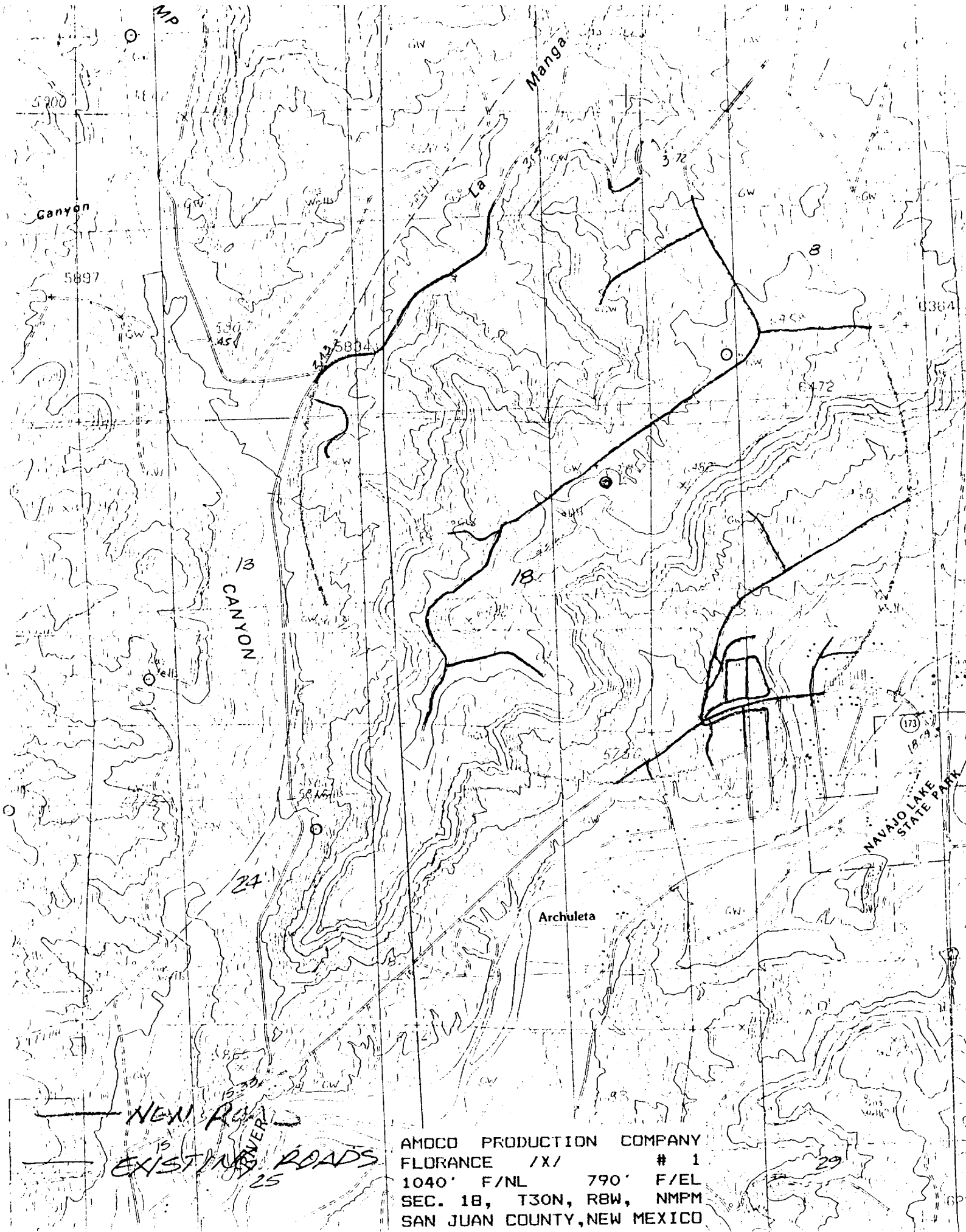
Signature
J. L. Hampton
Printed Name
J. L. Hampton
Position
Sr. Staff Admin. Supv.
Company
Amoco Production Company
Date
9/19/89

SURVEYOR CERTIFICATION

I hereby certify that the well location shown on this plat was plotted from field notes of actual surveys made by me or under my supervision, and that the same is true and correct to the best of my knowledge and belief.

Date Surveyed
September 11, 1989

Signature & Seal of
Professional Surveyor
Gary D. Vann
Registered Professional Land Surveyor
7016



AMOCO PRODUCTION COMPANY
FLORANCE /X/ # 1
1040' F/NL 790' F/EL
SEC. 18, T30N, RBW, NMPM
SAN JUAN COUNTY, NEW MEXICO