

UNITED STATES
DEPARTMENT OF THE INTERIOR
BUREAU OF LAND MANAGEMENT

SUBMIT IN TRIPLICATE*
(Other instructions on
reverse side)

30-045-28155
Form approved.
Budget Bureau No. 1004-0136
Expires August 31, 1985

APPLICATION FOR PERMIT TO DRILL, DEEPEN, OR PLUG BACK

1a. TYPE OF WORK

DRILL ☒

DEEPEN ☐

PLUG BACK ☐

b. TYPE OF WELL

OIL
WELL ☐

GAS
WELL ☐

OTHER

SINGLE
ZONE ☒

MULTIPLE
ZONE ☐

2. NAME OF OPERATOR

BHP Petroleum (Americas) Inc.

3. ADDRESS OF OPERATOR

5847 San Felipe Suite 3600 Houston, Texas 77057-3005

4. LOCATION OF WELL (Report location clearly and in accordance with any State requirements.)*

At surface

NE NW

925'W x 1490'W

At proposed prod. zone

14. DISTANCE IN MILES AND DIRECTION FROM NEAREST TOWN OR POST OFFICE*

Approximately 2 miles East of Farmington, New Mexico

15. DISTANCE FROM PROPOSED* 925' from

LOCATION TO NEAREST
PROPERTY OR LEASE LINE, FT.

(Also to nearest drig. unit line, if any) Unit Boundary

18. DISTANCE FROM PROPOSED LOCATION*

TO NEAREST WELL, DRILLING, COMPLETED,
OR APPLIED FOR, ON THIS LEASE, FT.

±150'

16. NO. OF ACRES IN LEASE

2,561.19 437.32

17. NO. OF ACRES ASSIGNED
TO THIS WELL

160 157.56

19. PROPOSED DEPTH

1709'

20. ROTARY OR CABLE TOOLS

Rotary

21. ELEVATIONS (Show whether DF, RT, GR, etc.) This action is subject to technical and
procedural review pursuant to 43 CFR 3165.3
5589' GR and appeal pursuant to 43 CFR 3165.4.

22. APPROX. DATE WORK WILL START*
Fall 1990

23. PROPOSED CASING AND CEMENTING PROGRAM

DRILLING OPERATIONS AUTHORIZED ARE
SUBJECT TO COMPLIANCE WITH ATTACHED
GENERAL QUANTITY OF CEMENT
50 SX (57.5 cu.ft.)
215 SX (265 cu.ft.)

SIZE OF HOLE	SIZE OF CASING	WEIGHT PER FOOT	SETTING DEPTH
8 3/4"	7"	20#	±130
6 1/4"	4 1/2"	10.5#	±1709'

RECEIVED

AUG 21 1990

OIL CON. DIV
DIST. 3

IN ABOVE SPACE DESCRIBE PROPOSED PROGRAM: If proposal is to deepen or plug back, give data on present productive zone and proposed new productive zone. If proposal is to drill or deepen directionally, give pertinent data on subsurface locations and measured and true vertical depths. Give blowout preventer program, if any.

24.

SIGNED

Chuck Williams
Chuck Williams

TITLE

Field Services Administrator

DATE

7/17/90

(This space for Federal or State office use)

PERMIT NO.

APPROVAL DATE

APPROVED BY

CONDITIONS OF APPROVAL, IF ANY:

TITLE

DATE

AS APPROVED

John Skella
BUREAU MANAGER

*See Instructions On Reverse Side

Submit to Appropriate
District Office
State Lease - 4 copies
Fee Lease - 3 copies

State of New Mexico
Energy, Minerals and Natural Resources Department

Form C-102
Revised 1-1-89

OIL CONSERVATION DIVISION

P.O. Box 2088

Santa Fe, New Mexico 87504-2088

DISTRICT I

P.O. Box 1980, Hobbs, NM 88240

DISTRICT II

P.O. Drawer DD, Artesia, NM 88210

DISTRICT III

1000 Rio Brazos Rd., Aztec, NM 87410

WELL LOCATION AND ACREAGE DEDICATION PLAT

All Distances must be from the outer boundaries of the section

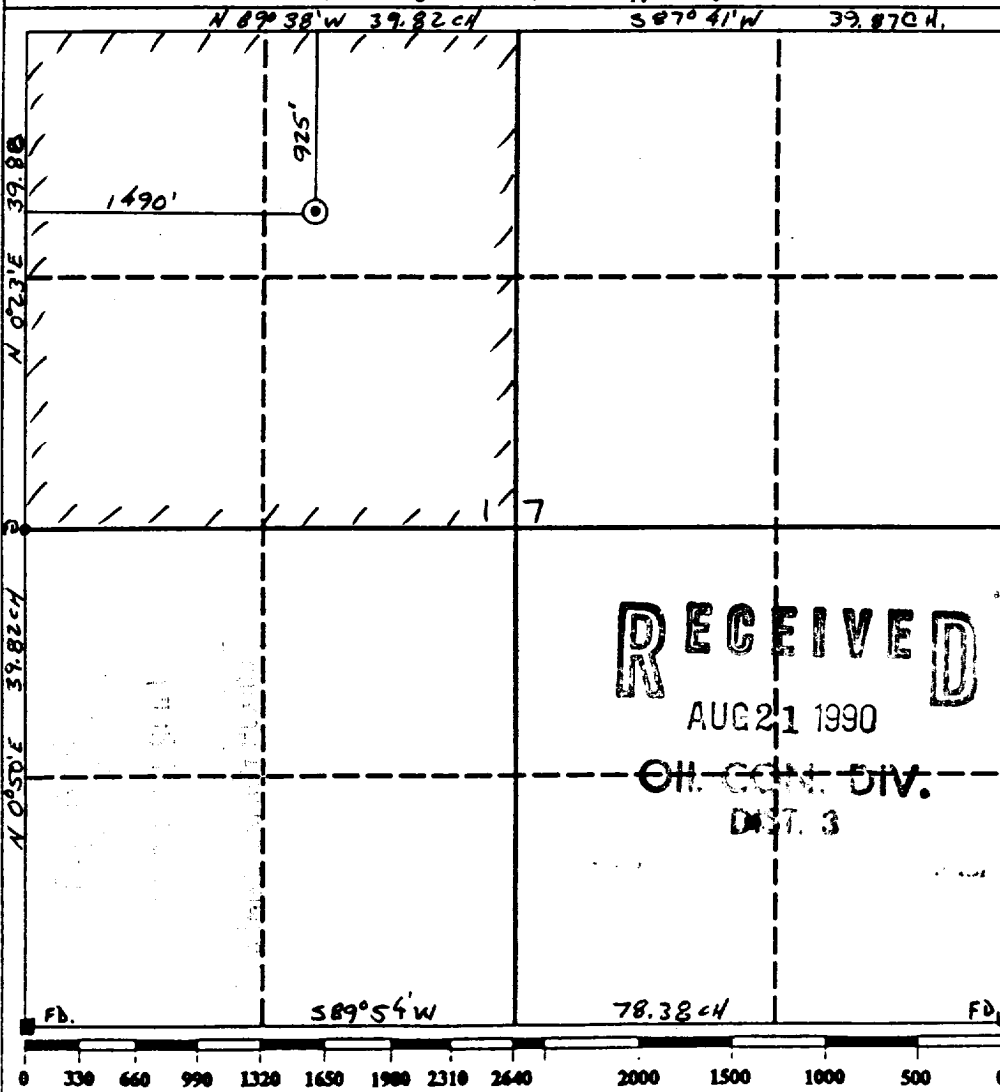
Operator BHP Petroleum (Americas) Incorporated			Lease Gallegos Canyon Unit		Well No. 504
Unit Letter C	Section 17	Township 29N	Range 12W	County NMPM San Juan	

Actual Footage Location of Well:

925' feet from the North line and 1490 feet from the West line

Ground level Elev. 5589'	Producing Formation Pictured Cliffs	Pool W. Kutz Pictured Cliffs	Dedicated Acreage: 160 / 57.56 Acres
-----------------------------	----------------------------------------	---------------------------------	-----------------------------------------

- Outline the acreage dedicated to the subject well by colored pencil or hatchure marks on the plat below.
- If more than one lease is dedicated to the well, outline each and identify the ownership thereof (both as to working interest and royalty).
- If more than one lease of different ownership is dedicated to the well, have the interest of all owners been consolidated by communitization, unitization, force-pooling, etc.?
☐ Yes ☐ No If answer is "yes" type of consolidation _____
If answer is "no" list the owners and tract descriptions which have actually been consolidated. (Use reverse side of this form if necessary).
No allowable will be assigned to the well until all interests have been consolidated (by communitization, unitization, forced-pooling, or otherwise) or until a non-standard unit, eliminating such interest, has been approved by the Division.



OPERATOR CERTIFICATION

I hereby certify that the information contained herein is true and complete to the best of my knowledge and belief.

Signature

Chuck Williams

Printed Name

Chuck Williams

Position

Field Services Administrator

Company

BHP Petroleum (Americas) Inc.

Date

July 17, 1990

SURVEYOR CERTIFICATION

I hereby certify that the well location shown on this plat was plotted from field notes of actual surveys made by me or under my supervision, and that the same is true and correct to the best of my knowledge and belief. 6-29-90

Date Surveyed

Roy A. Rush

Signature & Seal of Professional Surveyor

ROY A. RUSH
NEW MEXICO
8894
CERTIFIED PROFESSIONAL LAND SURVEYOR

BHP PETROLEUM (AMERICAS) INC.
GALLEGOS CANYON UNIT #504
925'FNL & 1490'FWL
Sec.17, T29N, R12W
San Juan Co., N.M.

