

$$09=18-90$$

**T** Gas  
**R**  
**A**  
**N**  
**S**

TOPS		NiTD	X	Well Log	TEST DATA								
				Plot	Schd.	PC	Q	PW	PD	D	Ref.No.		
Ojo Alamo		C - 103											
Kirtland		C - 104		Electric Log									
Fruitland				C - 122									
Pictured Cliffs		Ditr		Dfa									
Chacra		Datr		Dac									
Cliff House													
Menefee													
Point Lookout													
Mancos													
Gallup													
Greenhorn													
Dakota													
Entrada													

Acres E/320

BasinFrCoalCo. SJ S 30 T 29N R 12W U B Oper. BHP Petroleum, Inc. Los Gallegos Canyon Ut. No. 395

Submit to Appropriate  
District Office  
State Lease - 6 copies  
Fee Lease - 5 copies

State of New Mexico  
Energy, Minerals and Natural Resources Department

Form C-101  
Revised 1-1-89

OIL CONSERVATION DIVISION

DISTRICT I  
P.O. Box 1980, Hobbs, NM 88240

P.O. Box 2088

Santa Fe, New Mexico 87504-2088

DISTRICT II  
P.O. Drawer DD, Artesia, NM 88210

DISTRICT III  
1000 Rio Brazos Rd., Aztec, NM 87410

API NO. (assigned by OCD on New Wells)

30-045-28117

5. Indicate Type of Lease

STATE ☐

FEE ☒

6. State Oil & Gas Lease No.

APPLICATION FOR PERMIT TO DRILL, DEEPEN, OR PLUG BACK

1a. Type of Work:

DRILL ☒

RE-ENTER ☐

DEEPEN ☐

PLUG BACK ☐

b. Type of Well:

OIL WELL ☐

GAS WELL ☒

SINGLE ZONE ☒

MULTIPLE ZONE ☐

7. Lease Name or Unit Agreement Name

Gallegos Canyon Unit

2. Name of Operator

BHP Petroleum (Americas) Inc. 2217

8. Well No.

395

3. Address of Operator

5847 San Felipe Suite #3600 Houston, Texas 77057

9. Pool name or Wildcat

Basin Fruitland Coal 71629

4. Well Location

Unit Letter

B

:

860

Feet From The North

Line and

1595

Feet From The East

Line

Section Sec 30

Township 29N

Range 12W

NMPM San Juan

County

10. Proposed Depth

1318'

11. Formation

Fruitland Coal

12. Rotary or C.T.

Rotary

13. Elevation (Show whether DF, RT, GR, etc.)

5303'

14. Kind & Status Plug. Bond

Blanket

15. Drilling Contractor

Unknown

16. Approx. Date Work will start

Fall 1990

17.

PROPOSED CASING AND CEMENT PROGRAM

SIZE OF HOLE	SIZE OF CASING	WEIGHT PER FOOT	SETTING DEPTH	SACKS OF CEMENT	EST. TOP
8 3/4"	7"	20#	± 130	50 sx (57.5 cu. ft)	Surface
6 1/4"	4 1/2"	10.5#	± 1318	168 sx (206 cu ft)	Surface

It is proposed to drill the subject well to 1318' with primary production anticipated in the Fruitland Coal.

Estimated Formation Tops: Fruitland 818'  
Basin Fruitland Coal 1128'  
Pictured Cliffs 1168'  
T.D. 1318'

B.O.P.E. will consist of 2000# Reagen Bladder type B.O.P., pipe ram & blind ram B.O.P.

RECEIVED  
AUG 13 1990

IN ABOVE SPACE DESCRIBE PROPOSED PROGRAM: IF PROPOSAL IS TO DEEPEN OR PLUG BACK, GIVE EST. ON PRODUCTION ZONE AND PROPOSED NEW PRODUCTIVE ZONE. GIVE BLOWOUT PREVENTER PROGRAM, IF ANY.

I hereby certify that the information above is true and complete to the best of my knowledge and belief.

SIGNATURE

Chuck Williams

TITLE

Field Service Administrator 8/4/90

TYPE OR PRINT NAME

Chuck Williams

TELEPHONE NO. (713) 780-544

(This space for State Use)

APPROVED BY

Original Signed by FRANK T. CHAVEZ

TITLE

SUPERVISOR DISTRICT 3

DATE

AUG 13 1990

CONDITIONS OF APPROVAL, IF ANY:

UNLESS DRILLING IS COMMENCED,  
SPUD NOTICE MUST BE SUBMITTED  
WITHIN 10 DAYS.

Submit to Appropriate  
District Office  
State Lease - 4 copies  
Fee Lease - 3 copies

State of New Mexico  
Energy, Minerals and Natural Resources Department

Form C-102  
Revised 1-1-89

OIL CONSERVATION DIVISION

P.O. Box 2088  
Santa Fe, New Mexico 87504-2088

DISTRICT I  
P.O. Box 1980, Hobbs, NM 88240

DISTRICT II  
P.O. Drawer DD, Artesia, NM 88210

DISTRICT III  
1000 Rio Brazos Rd., Aztec, NM 87410

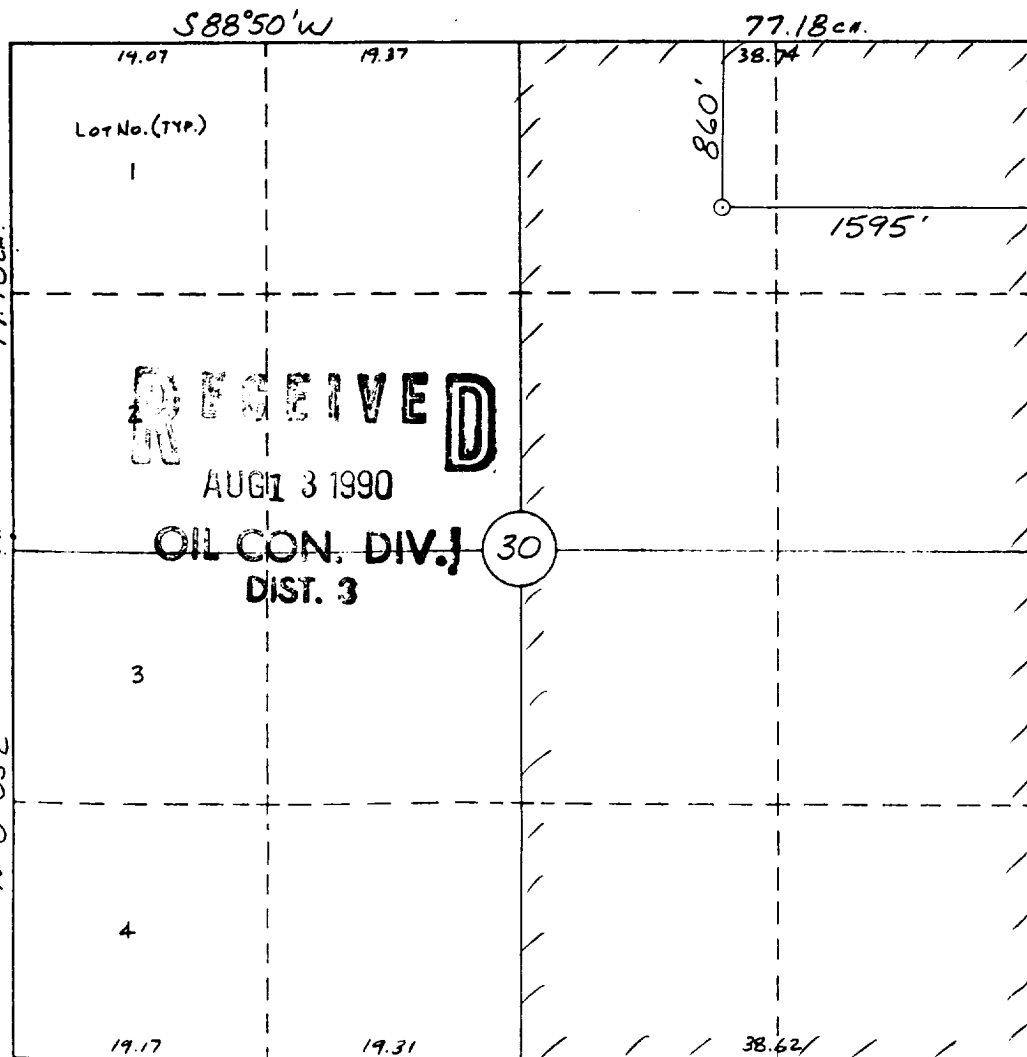
WELL LOCATION AND ACREAGE DEDICATION PLAT

All Distances must be from the outer boundaries of the section

Operator <b>BHP PETROLEUM (AMERICAS) INC.</b>			Lease <b>GALLEGOS CANYON UNIT</b>		Well No. <b>395</b>
Unit Letter <b>B</b>	Section <b>30</b>	Township <b>29 N</b>	Range <b>12 W</b>	County <b>San Juan</b>	
Actual Footage Location of Well: <b>860</b> feet from the <b>North</b> line and <b>1595</b> feet from the <b>East</b> line					
Ground level Elev. <b>5303</b>	Producing Formation <b>Fruitland Coal</b>		Pool <b>Basin Fruitland Coal</b>		Dedicated Acreage: <b>320</b> Acres

- Outline the acreage dedicated to the subject well by colored pencil or hatchure marks on the plat below.
- If more than one lease is dedicated to the well, outline each and identify the ownership thereof (both as to working interest and royalty).
- If more than one lease of different ownership is dedicated to the well, have the interest of all owners been consolidated by communitization, unitization, force-pooling, etc.?  
☐ Yes ☐ No If answer is "yes" type of consolidation \_\_\_\_\_  
If answer is "no" list the owners and tract descriptions which have actually been consolidated. (Use reverse side of this form if necessary.)  
No allowable will be assigned to the well until all interests have been consolidated (by communitization, unitization, forced-pooling, or otherwise) or until a non-standard unit, eliminating such interest, has been approved by the Division.

0 330 660 990 1320 1650 1980 2310 2640 2000 1500 1000 500 0



OPERATOR CERTIFICATION

I hereby certify that the information contained herein is true and complete to the best of my knowledge and belief.

Signature  
*Chuck Williams*  
Printed Name  
Chuck Williams  
Position  
Field Services Administrator  
Company  
BHP Petroleum (Americas) Inc.  
Date  
August 6, 1990

SURVEYOR CERTIFICATION

I hereby certify that the well location shown on this plat was plotted from field notes of actual surveys made by me or under my supervision, and that the same is true and correct to the best of my knowledge and belief.

7-17-90

Date Surveyed  
William E. Mahnke II

Signature & Seal of  
Professional Surveyor

Certificate No. 13466  
Professional Surveyor

BHP PETROLEUM (AMERICAS) INC.  
GALLEGOS CANYON UNIT NO. 395  
860' FNL & 1595' FEL SECTION 30 T29N-R12W  
SAN JUAN COUNTY, NEW MEXICO  
TEN POINT PROGRAM

1. Surface Formation: Kirtland or valley fill

2 &

3. Estimated Formation Tops:

<u>Formation</u>	<u>Top</u>	<u>Expected Production</u>
Fruitland	818	
Basal Fruitland Coal	1128	Gas
Pictured Cliffs	1168	Gas
Total Depth	1318	

4. Casing and Cementing Program: A string of 7" 20# K-55 casing with ST&C couplings is to be set at  $\pm 130'$  in an 8  $\frac{3}{4}"$  hole and cemented to the surface in a single stage with 50 sx Class 'H' cement (yield =  $1.15 \text{ ft}^3/\text{sx}$ ) containing 3 %  $\text{CaCl}_2$  and  $\frac{1}{4}$  #/sx celloflake. Slurry volume assumes a 100 percent excess over calculated hole volume. Centralizers will be run on the bottom two joints as long as boulders are not encountered while drilling the surface hole. If boulders are encountered while drilling the surface hole, no centralizers will be run as it has been BHP P(A)'s experience centralizers have a tendency to knock off boulders and hang up the casing while running in the hole. Minimum clearance between collars and hole is 1.094". Prior to drilling out shoe, casing and BOPE will be tested to a minimum of 2000 psi. Safety factors utilized in the design of this casing string were: Burst = 1.1, Collapse = 1.125, and Tension = 1.8 or 100,000# overpull whichever was greater.

A production string of 4 $\frac{1}{2}"$  10.5# K-55 casing with ST&C couplings will be run from the surface to total depth in a 6 $\frac{1}{4}"$  hole. This string will be cemented to the surface with a minimum of 118 sx of 50-50 pozmix containing 2 % gel, 0.5 % fluid loss additive and  $\frac{1}{4}$  #/sx celloflake (yield =  $1.26 \text{ ft}^3/\text{sx}$ ) followed by 50 sx of Class 'G' cement containing low fluid loss additives (yield =  $1.15 \text{ ft}^3/\text{sx}$ ). Slurry volume assumes a 50 percent excess over calculated hole volume. Cement volume is subject to change after review and recalculation of

hole volume from the open hole calipers. Centralizers will be spaced such that a minimum of two are located above and two are located below the Basal Fruitland Coal; and, if any Ojo Aloma is present in the open hole section at the top of the hole, a minimum of one centralizer will be run just below the base and another into the base of Ojo Alamo. Minimum clearance between collars and hole is 1.25". Prior to perforating the casing for any attempted completion, the casing will be tested to a minimum of 2500 psi. Safety factors utilized in the design of this casing string were: Burst = 1.1, Collapse = 1.125, and Tension = 1.8 or 100,000# overpull whichever was greater.

A chronological log following the completion of the cementing operations detailing the pump rate, pump pressure, slurry density, and slurry volume for each job will be submitted in a Sundry Notice.

5. **Pressure Control Equipment:** (See attached schematic diagrams) A minimum of a 2M BOPE well control system will be utilized. BOP's and choke manifold will be installed and pressure tested before drilling out under surface casing and then will be checked daily as to mechanical operation condition. Ram type preventors will be tested to 70 percent of the internal yield pressure of the casing. The annular preventor will be tested to 50 percent of its working pressure.

A full opening internal blowout preventor or drill pipe safety valve will be on the drilling floor at all times and will be capable of fitting all connections.

6. **Mud Program:** A fresh water Low Solids, Non-Dispersed mud system will be used to drill this well. Sufficient materials will be on location at all times to maintain mud properties and to control any unforeseen lost circulation problems or abnormal pressures in the Farmington Sands of the Kirtland Formation. All drilling fluids will be contained in a steel pit. At the completion of drilling, the drilling fluid will be hauled off to be used for another well. The remaining accumulation of solids in the pit will be dumped into a small earthen pit beside the steel pit. As soon as this pit dries up, it will be covered up.

Mud program summary is as follows:

<u>Interval</u> <u>(feet)</u>	<u>Mud Weight</u> <u>(#/gal)</u>	<u>Viscosity</u> <u>(sec/qt)</u>
0 - 1000	8.4 or less	30 - 38
1000 - TD	9.3 or less	40 - 55

7. **Auxiliary Equipment:**

An upper Kelly Cock will be utilized. At a minimum, a flow sensor will be installed in the system and the mud volume constantly be visually monitored.

8. **Logging Program:** SP-DIL and GR-FDC-CNL logs will be run from TD to surface casing shoe.

**Coring Program:** No cores are planned.

**Testing Program:** No tests are planned.

**Stimulation Program:** Perf the Basal Fruitland Coal with 2 JSPF and frac with 50,000 gals of either a 70 quality nitrogen foam or a crosslinked-gelled water containing a minimum of 50,000 lbs of 20-40 mesh sand.

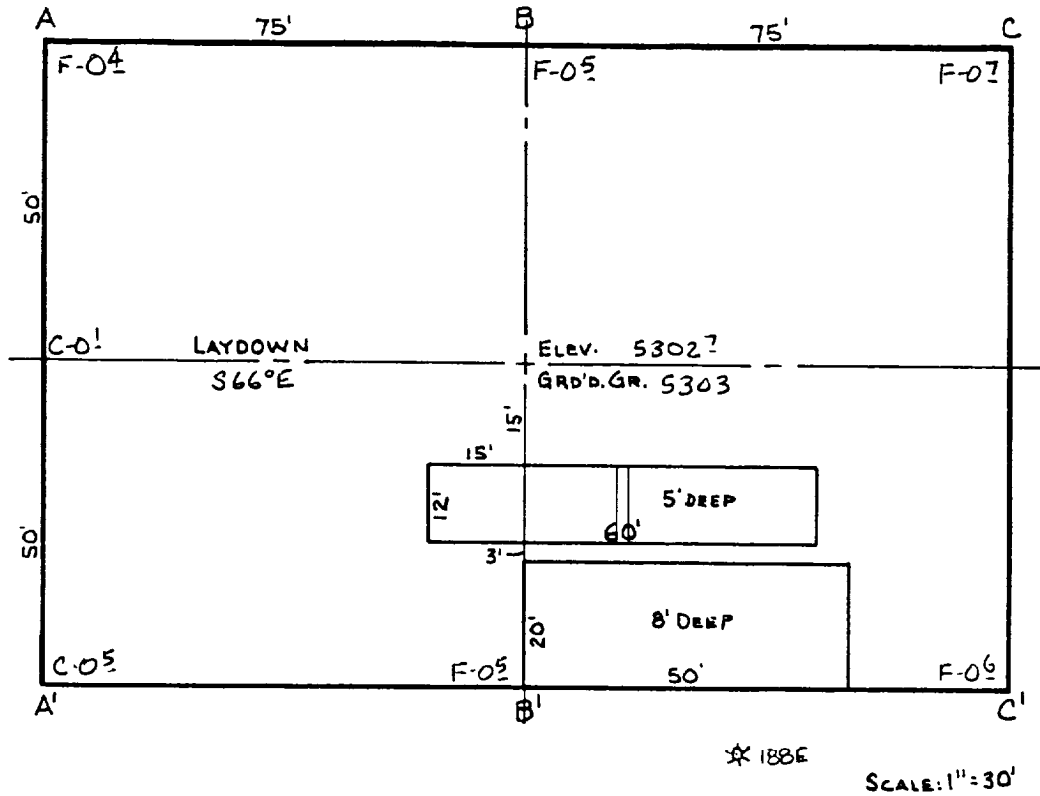
9. **Abnormal Pressure:** Although not expected, abnormal pressures are possible in the Farmington Sands of the Kirtland Formation.

**Estimated Bottom Hole Pressure:** 400 psi.

10. **Anticipated Starting Date:** As soon as all required approvals are received.

**Duration of Operation:** It is anticipated a total of 4 days will be required for drilling operations and 5 days for completion operations.

BHP PETROLEUM (AMERICAS) INC.  
 GALLEGOS CANYON UNIT #395  
 860'FNL & 1595'FEL  
 Sec.30, T29N, R12W  
 San Juan Co., N.M.



SCALE: 1"=30'

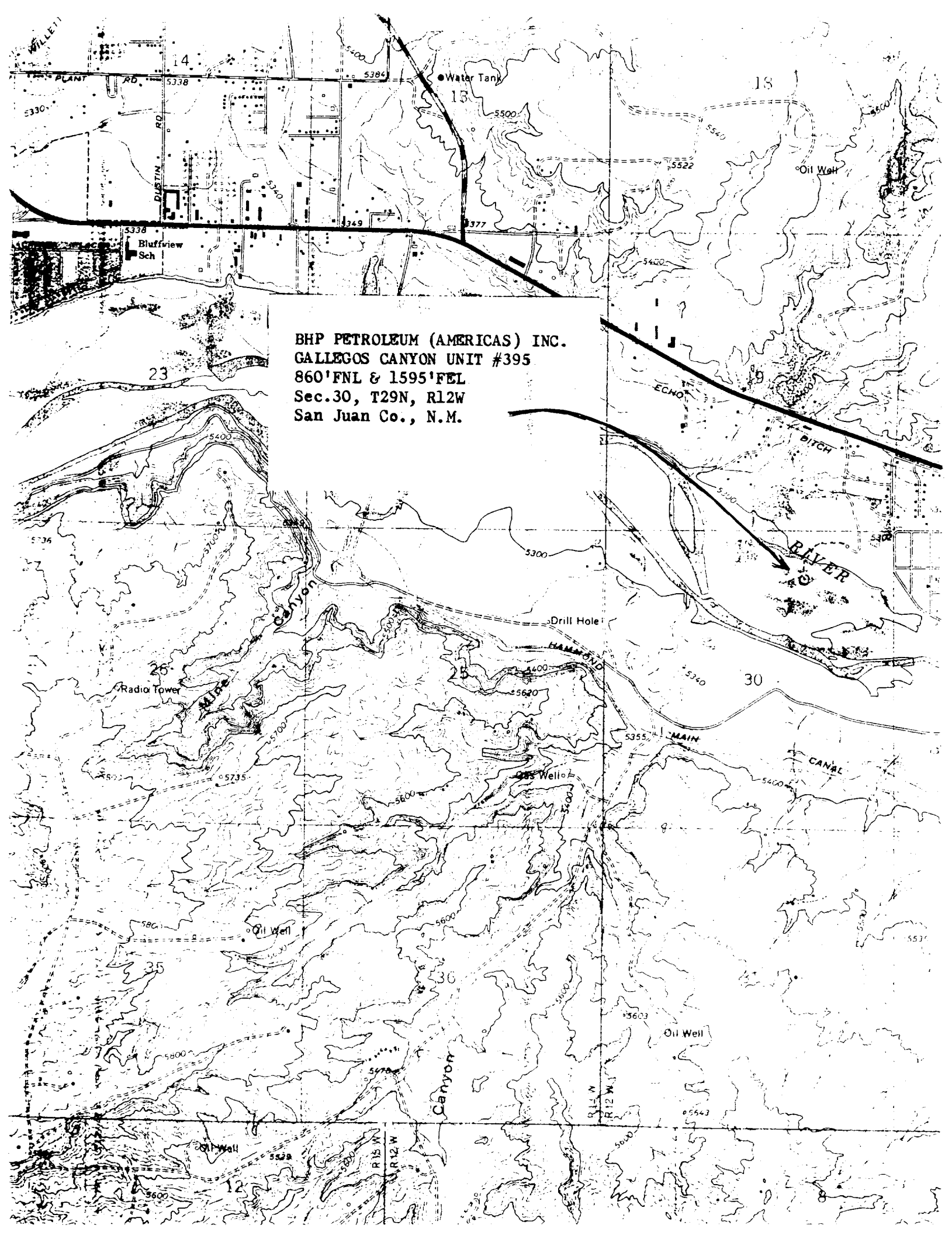
A-A'	Vert.: 1"=30'	Horiz.: 1"=50'	C/L
5300	-----	-----	-----
5290	-----	-----	-----
	-----	-----	-----

B-B'	Vert.: 1"=30'	Horiz.: 1"=50'	C/L
5300	-----	-----	-----
5290	-----	-----	-----
	-----	-----	-----

C-C'	Vert.: 1"=30'	Horiz.: 1"=50'	C/L
5300	-----	-----	-----
5290	-----	-----	-----
	-----	-----	-----



A detailed topographic map of the Gallegos Canyon Unit #395. The map features contour lines indicating elevation, with labels such as 5300, 5400, 5500, 5600, and 5700. A prominent road, labeled 'DUSTIN RD', runs horizontally across the upper portion of the map. To the right, a river is labeled 'RIVER'. A 'CANAL' is shown in the lower right quadrant. Several 'Oil Well' locations are marked with dots and labels. A 'Radio Tower' is located on the left side. A 'Drill Hole' is marked near the center. The map is divided into sections by a grid, with section numbers 14, 13, 18, 23, 25, 30, 35, and 12 visible. A text box in the center provides specific information about the unit and its location. The map also shows various other features like 'Bluffview Sch', 'Water Tank', and 'ECHO'.

BHP PETROLEUM (AMERICAS) INC.  
GALLEGOS CANYON UNIT #395  
860'FNL & 1595'FEL  
Sec.30, T29N, R12W  
San Juan Co., N.M.



1. The first part of the document is a list of the names of the persons who have been appointed to the various positions of the Board of Directors of the company.

2. The second part of the document is a list of the names of the persons who have been appointed to the various positions of the Board of Directors of the company.

3. The third part of the document is a list of the names of the persons who have been appointed to the various positions of the Board of Directors of the company.

4. The fourth part of the document is a list of the names of the persons who have been appointed to the various positions of the Board of Directors of the company.

5. The fifth part of the document is a list of the names of the persons who have been appointed to the various positions of the Board of Directors of the company.