

## OIL CONSERVATION DIVISION

P.O. Box 2088

Santa Fe, New Mexico 87504-2088

30-045-28666

71029

DISTRICT I  
P.O. Box 1980, Hobbs, NM 88240DISTRICT II  
P.O. Drawer DD, Artesia, NM 88210DISTRICT III  
1000 Rio Brazos Rd., Aztec, NM 87410

## WELL LOCATION AND ACREAGE DEDICATION PLAT

All Distances must be from the outer boundaries of the section

Operator McKenzie Methane Corporation			Lease Stewart <b>E</b>		Well No. 3-1
Unit Letter G	Section 5	Township 29 North	Range 10 West	County San Juan	
Actual Footage Location of Well: 1443 feet from the North line and 1710 feet from the East line					
Ground level Elev. 5380 Est.	Producing Formation Fruitland Coal	Pool Basin Fruitland Coal		Dedicated Acreage: N/2 320 Acres	

1. Outline the acreage dedicated to the subject well by colored pencil or hatchure marks on the plat below.

2. If more than one lease is dedicated to the well, outline each and identify the ownership thereof (both as to working interest and royalty).

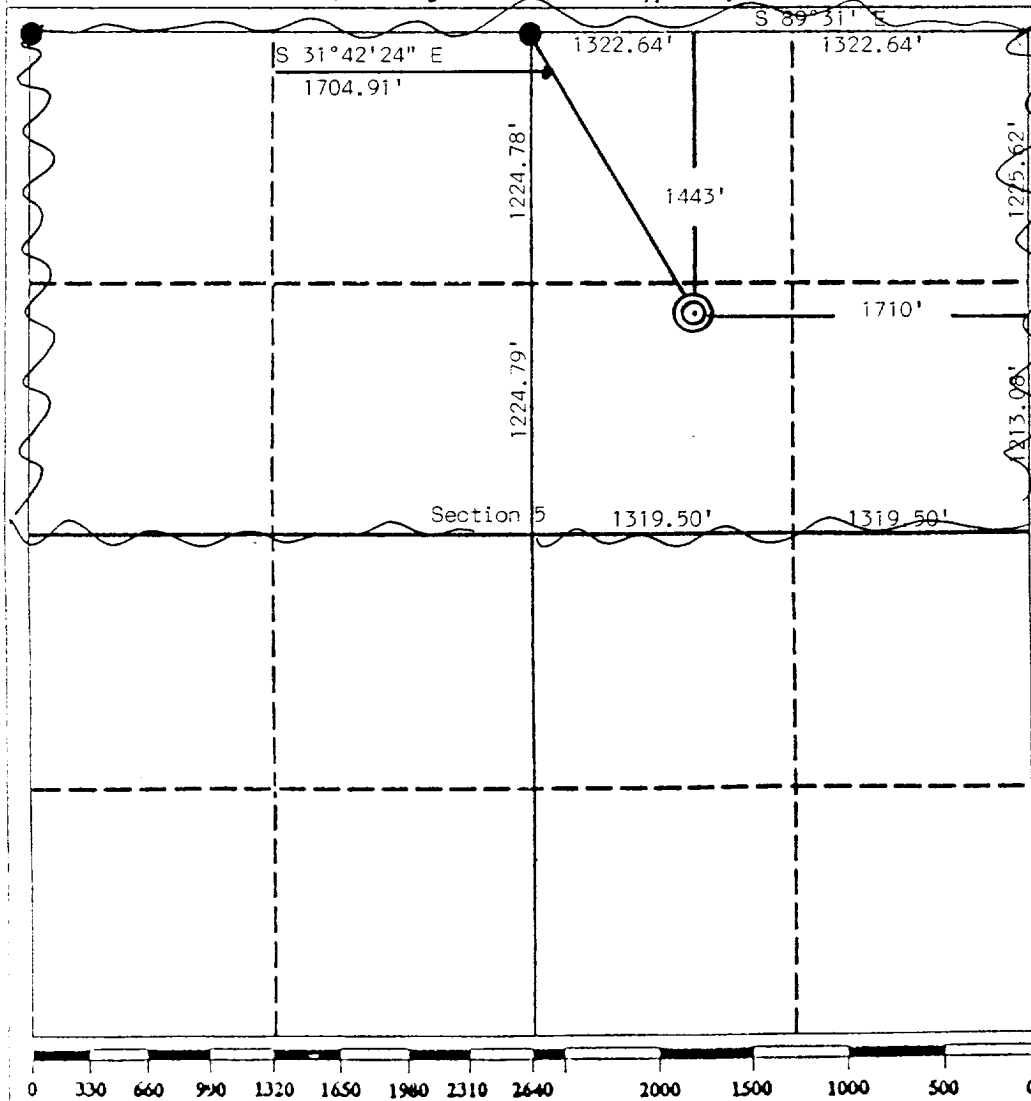
3. If more than one lease of different ownership is dedicated to the well, have the interest of all owners been consolidated by communization, unitization, force-pooling, etc.?

☐ Yes☐ No

If answer is "yes" type of consolidation

If answer is "no" list the owners and tract descriptions which have actually been consolidated. (Use reverse side of this form if necessary.)

No allowable will be assigned to the well until all interests have been consolidated (by communization, unitization, forced-pooling, or otherwise) or until a non-standard unit, eliminating such interest, has been approved by the Division.



## OPERATOR CERTIFICATION

I hereby certify that the information contained herein is true and complete to the best of my knowledge and belief.

Signature

Printed Name

Position

Company

Date

## SURVEYOR CERTIFICATION

I hereby certify that the well location shown on this plat was plotted from field notes of actual surveys made by me or under my supervision, and that the same is true and correct to the best of my knowledge and belief.

Date Surveyed

March 3, 1992

Signature & Seal of  
Professional Surveyor

Certificate No. 5979

Edgar L. Risenhoover, P.S.