

UNITED STATES  
DEPARTMENT OF THE INTERIOR  
BUREAU OF LAND MANAGEMENT

APPLICATION FOR PERMIT TO DRILL, DEEPEN, OR PLUG BACK

1a. Type of Work DRILL	5. Lease Number SF-078596 Unit Reporting Number	
1b. Type of Well GAS	If Indian, All. or Tribe	
2. Operator <b>BURLINGTON RESOURCES</b> Oil & Gas Company	7. Unit Agreement Name	
3. Address & Phone No. of Operator PO Box 4289, Farmington, NM 87499 (505) 326-9700	8. Farm or Lease Name Howell C 9. Well Number 3C	
4. Location of Well 1180' FSL, 1680' FEL Latitude 36° 49.3, Longitude 107° 42.8	10. Field, Pool, Wildcat Blanco Mesaverde 11. Sec., Twn, Rge, Mer. (NMPM) Sec. 7, T-30-N, R-8-W API # 30-045-30009	
14. Distance in Miles from Nearest Town 6 miles from Navajo Dam Post Office	12. County San Juan	13. State NM
15. Distance from Proposed Location to Nearest Property or Lease Line 1180'	17. Acres Assigned to Well 320 E/2	
16. Acres in Lease		
18. Distance from Proposed Location to Nearest Well, Drig, Compl, or Applied for on this Lease 1000'	20. Rotary or Cable Tools Rotary	
19. Proposed Depth 5362'	22. Approx. Date Work will Start	
21. Elevations (DF, FT, GR, Etc.) 5984' GR		
23. Proposed Casing and Cementing Program See Operations Plan attached	DRILLING OPERATIONS AUTHORIZED ARE SUBJECT TO COMPLIANCE WITH ATTACHED "GENERAL REQUIREMENTS"	
24. Authorized by <u><i>Prady Cole</i></u> Regulatory/Compliance Administrator	Date <u>10-6-99</u>	

PERMIT NO. \_\_\_\_\_ APPROVAL DATE DEC 01 1999  
APPROVED BY \_\_\_\_\_ TITLE \_\_\_\_\_ DATE 12/2/99

Archaeological Report to be submitted

Threatened and Endangered Species Report to be submitted

NOTE: This format is issued in lieu of U.S. BLM Form 3160-3

Title 18 U.S.C. Section 1001, makes it a crime for any person knowingly and willfully to make to any department or agency of the United States any false, fictitious or fraudulent statements or presentations as to any matter within its jurisdiction.

*cl > c*

MLCCD

District I  
PO Box 1980, Hobbs, NM 88241-1980

District II  
PO Drawer 00, Artesia, NM 88211-0719

District III  
1000 Rio Brazos Rd., Aztec, NM 87410

District IV  
PO Box 2088, Santa Fe, NM 87504-2088

State of New Mexico  
Energy, Minerals & Natural Resources Department

OIL CONSERVATION DIVISION

PO Box 2088  
Santa Fe, NM 87504-2088

Form C-102  
Revised February 21, 1994  
Instructions on back  
Submit to Appropriate District Office  
State Lease - 4 Copies  
Fee Lease - 3 Copies

RECEIVED  
OCT 20 PM 2:00

070 FARMINGTON, NM

AMENDED REPORT

WELL LOCATION AND ACREAGE DEDICATION PLAT

<sup>1</sup> API Number 30-045-30009	<sup>2</sup> Pool Code 72319	<sup>3</sup> Pool Name Blanco Mesaverde
<sup>4</sup> Property Code 7120	<sup>5</sup> Property Name HOWELL C	<sup>6</sup> Well Number 3C
<sup>7</sup> GRID No. 14538	<sup>8</sup> Operator Name BURLINGTON RESOURCES OIL & GAS COMPANY	<sup>9</sup> Elevation 5984'

<sup>10</sup> Surface Location

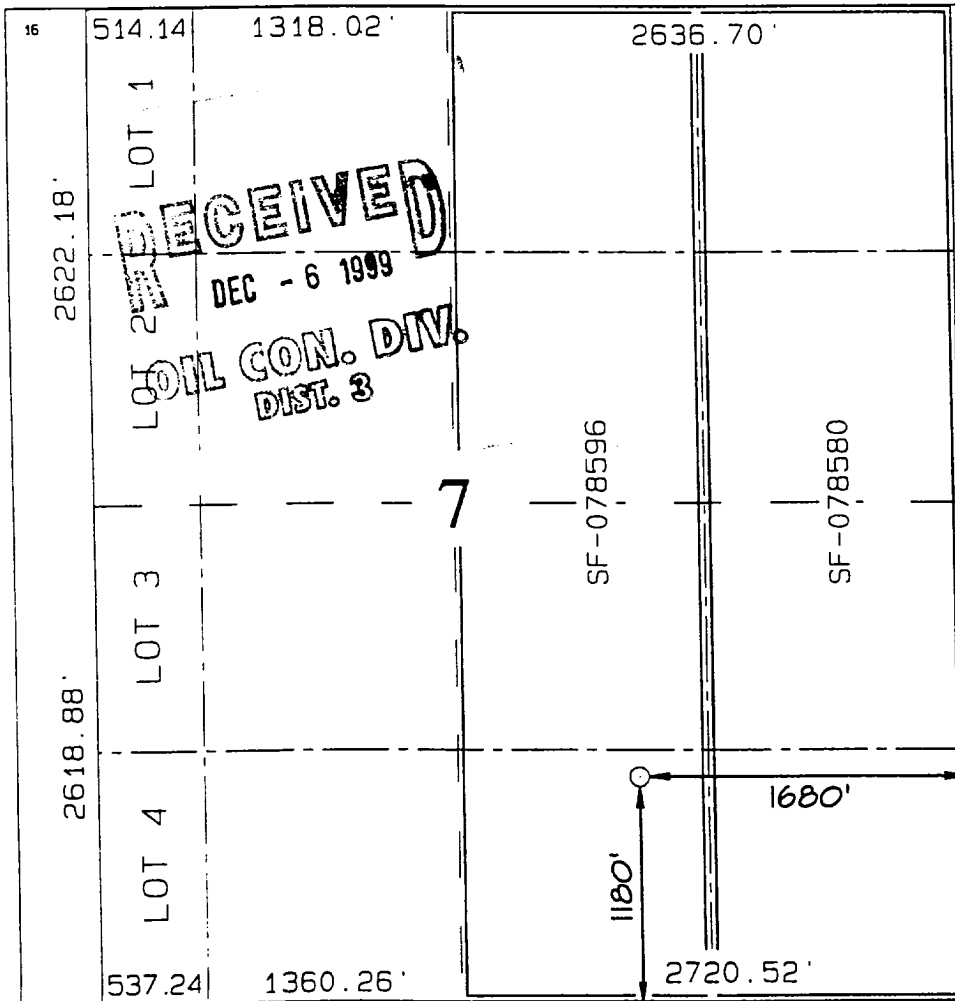
UL or lot no.	Section	Township	Range	Lot 10	Feet from the	North/South line	Feet from the	East/West line	County
0	7	30N	8W		1180	SOUTH	1680	EAST	SAN JUAN

<sup>11</sup> Bottom Hole Location If Different From Surface

UL or lot no.	Section	Township	Range	Lot 10	Feet from the	North/South line	Feet from the	East/West line	County

<sup>12</sup> Dedicated Acres E/320	<sup>13</sup> Joint or Infill	<sup>14</sup> Consolidation Code	<sup>15</sup> Order No.
--	-------------------------------	----------------------------------	-------------------------

NO ALLOWABLE WILL BE ASSIGNED TO THIS COMPLETION UNTIL ALL INTERESTS HAVE BEEN CONSOLIDATED  
OR A NON-STANDARD UNIT HAS BEEN APPROVED BY THE DIVISION



<sup>17</sup> OPERATOR CERTIFICATION

I hereby certify that the information contained herein is true and complete to the best of my knowledge and belief

*Peggy Cole*  
Signature  
Peggy Cole  
Printed Name  
Regulatory Administrator  
Title  
10-6-99  
Date

<sup>18</sup> SURVEYOR CERTIFICATION

I hereby certify that the well location shown on this plat was plotted from field notes of actual surveys made by me or under my supervision, and that the same is true and correct to the best of my belief.

AUGUST 24, 1999  
Date of Survey  
Signature and Seal of Surveyor  
NEALE C. EDWARDS  
NEW MEXICO  
6857  
Certificate 6857

## OPERATIONS PLAN

**Well Name:** Howell C #3C  
**Surface Location:** 1180' FSL, 1680' FEL, Section 7, T-30-N, R-8-W  
San Juan County, New Mexico  
Latitude 36° 49.3, Longitude 107° 42.8

**Formation:** Blanco Mesa Verde  
**Elevation:** 5984' GL

<u>Formation Tops:</u>	<u>Top</u>	<u>Bottom</u>	<u>Contents</u>
Surface	San Jose	1526'	aquifer
Ojo Alamo	1526'	1702'	aquifer
Kirtland	1702'	2206'	gas
Fruitland	2206'	2774'	gas
Pictured Cliffs	2774'	2887'	gas
Lewis	2887'	3476'	gas
<b>Intermediate TD</b>	<b>2987'</b>		
Mesa Verde	3476'	3803'	gas
Chacra	3803'	4513'	gas
Massive Cliff House	4513'	4621'	gas
Menefee	4621'	4962'	gas
Point Lookout	4962'		gas
<b>Total Depth</b>	<b>5362'</b>		

**Logging Program:**

Cased hole logging - Gamma Ray, Cement bond from surface to TD  
Mud Logs/Coring/DST - none

**Mud Program:**

<u>Interval- MD</u>	<u>Type</u>	<u>Weight</u>	<u>Vis.</u>	<u>Fluid Loss</u>
0- 200'	Spud	8.4-9.0	40-50	no control
200- 2987'	LSND	8.4-9.0	30-60	no control
2987- 5362'	Air/Mist	n/a	n/a	n/a

Pit levels will be visually monitored to detect gain or loss of fluid control.

**Casing Program (as listed, the equivalent, or better):**

<u>Hole Size</u>	<u>Measured Depth</u>	<u>Csg Size</u>	<u>Weight</u>	<u>Grade</u>
12 1/4"	0' - 200'	9 5/8"	32.3#	H-40
8 3/4"	0' - 2987'	7"	20.0#	J-55
6 1/4"	2987' - 5362'	4 1/2"	10.5#	J-55

**Tubing Program:** 0' -5362' 2 3/8" 4.7# J-55

**BOP Specifications, Wellhead and Tests:**

**Surface to Intermediate TD -**

11" 2000 psi minimum double gate BOP stack (Reference Figure #1).  
After nipple-up prior to drilling out surface casing, rams and casing will be tested to 600 psi for 30 minutes.

BURLINGTON RESOURCES OIL & GAS COMPANY HOWELL C #3C

1180' FSL & 1680' FEL, SECTION 7, T30N, R8W, N.M.P.M.  
SAN JUAN COUNTY, NEW MEXICO

