

District I
PO Box 1980, Hobbs, NM 88241-1980
District II
811 S. 1st Street, Artesia, NM 88210-2834
District III
1000 Rio Brazos Rd., Aztec, NM 87410
District IV
2040 South Pacheco, Santa Fe, NM 87505

State of New Mexico
Energy, Minerals & Natural Resources Department

OIL CONSERVATION DIVISION
2040 South Pacheco
Santa Fe, NM 87505

Form C-101
Revised October 18, 1994
Instructions on back
Submit to Appropriate District Office
State Lease - 6 Copies
Fee Lease - 5 Copies

☐ AMENDED REPORT

APPLICATION FOR PERMIT TO DRILL, RE-ENTER, DEEPEN, PLUG BACK, OR ADD A ZONE

¹ Operator name and Address Cross Timbers Operating Company 2700 Farmington Ave., Bldg. K. Ste 1 Farmington, NM 87401		² OGRID Number 167067
⁴ Property Code 23073	⁵ Property Name Morris Gas Com	³ API Number 30-0 45-30070
		⁶ Well No. 1R

⁷ Surface Location

UL or lot no.	Section	Township	Range	Lot. Idn	Feet from the	North/South Line	Feet from the	East/West line	County
M	26	29N	10W		850	South	1,190	West	San Juan

⁸ Proposed Bottom Hole Location If Different From Surface

UL or lot no.	Section	Township	Range	Lot. Idn	Feet from the	North/South Line	Feet from the	East/West line	County

⁹ Proposed Pool 1

Aztec Pictured Cliffs

¹⁰ Proposed Pool 2

¹¹ Work Type Code N	¹² Well Type Code G	¹³ Cable/Rotary R	¹⁴ Lease Type Code P	¹⁵ Ground Level Elevation 5,537'
¹⁶ Multiple No	¹⁷ Proposed Depth 2,150'	¹⁸ Formation Pictured Cliffs	¹⁹ Contractor Not awarded	²⁰ Spud Date Est 01/00

²¹ Proposed Casing and Cement Program

Hole Size	Casing Size	Casing weight/foot	Setting Depth	Sacks of Cement	Estimated TOC
8-3/4"	7"	20#, J-55, STC	200'	85	Surface
6-1/4"	4-1/2"	10.5#, J-55, STC	2,150'	175	Surface

²² Describe the proposed program. If this application is to DEEPEN or PLUG BACK give the data on the present productive zone and proposed new productive zone. Describe the blowout prevention program, if any. Use additional sheets if necessary

Surface casing cement program: Approximately 85 sacks of Class "B" cement containing 2% CaCl₂ & 1/4 pps celloflake. Circulate cement to surface.

Production casing cement program: Approximately 175 sacks (est 415 cu ft) Class "B" cement containing 2% D-79, 2% CaCl₂ & 1/4 pps celloflake. Circulate cement to surface. Cement volume will be calculated from caliper log.

BOP program: 11" x 3,000 psig double ram BOP

²³ I hereby certify that the information given above is true and complete to the best of my knowledge and belief. Signature: <i>Ray Martin</i> 12/2/99 Printed name: Ray Martin Title: Operation Engineer	OIL CONSERVATION DIVISION Approved by: <i>Charlie T. Lerner</i> Title: DEPUTY OIL & GAS INSPECTOR, DIST. #3 Approval Date: DEC 6 2000 Expiration Date: DEC 6 2000
---	--

District I
PO Box 1980, Hobbs, NM 88241-1980

District II
PO Drawer 00, Artesia, NM 88211-0719

District III
1000 Rio Brazos Rd., Aztec, NM 87410

District IV
PO Box 2088, Santa Fe, NM 87504-2088

State of New Mexico
Energy, Minerals & Natural Resources Department

OIL CONSERVATION DIVISION
PO Box 2088
Santa Fe, NM 87504-2088

Form C-102
Revised February 21, 1994
Instructions on back
Submit to Appropriate District Office
State Lease - 4 Copies
Fee Lease - 3 Copies

☐ AMENDED REPORT

WELL LOCATION AND ACREAGE DEDICATION PLAT

*API Number 30-045-30070		*Pool Code 71280	*Pool Name AZTEC PICTURED CLIFFS
*Property Code 23073	*Property Name MORRIS GAS COM		*Well Number 1R
*OGRID No. 167067	*Operator Name CROSS TIMBERS OPERATING COMPANY		*Elevation 5537'

¹⁰ Surface Location

UL or lot no. M	Section 26	Township 29N	Range 10W	Lot Idn	Feet from the 850	North/South line SOUTH	Feet from the 1190	East/West line WEST	County SAN JUAN
--------------------	---------------	-----------------	--------------	---------	----------------------	---------------------------	-----------------------	------------------------	--------------------

¹¹ Bottom Hole Location If Different From Surface

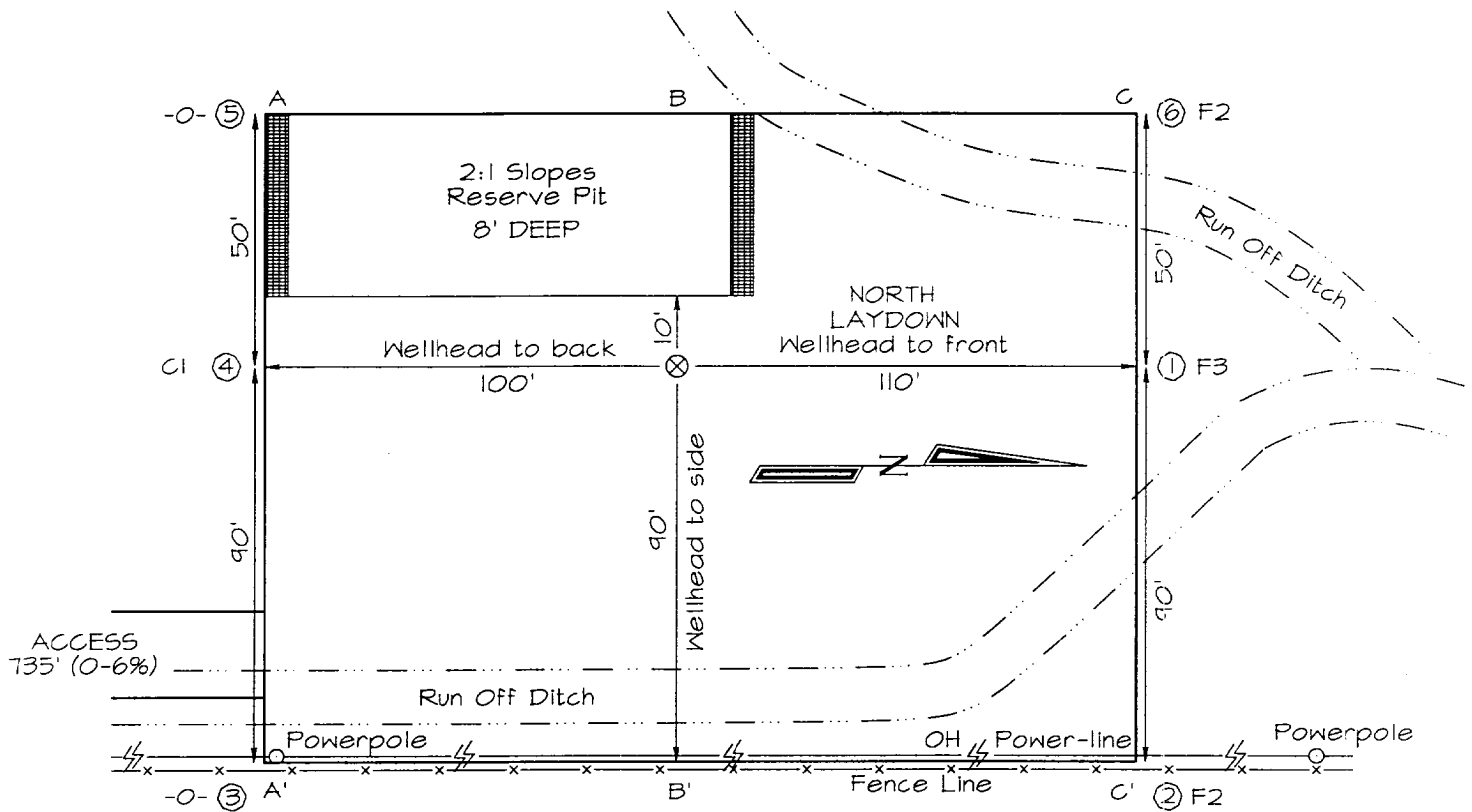
UL or lot no.	Section	Township	Range	Lot Idn	Feet from the	North/South line	Feet from the	East/West line	County
---------------	---------	----------	-------	---------	---------------	------------------	---------------	----------------	--------

¹² Dedicated Acres 160	¹³ Joint or Infill N	¹⁴ Consolidation Code	¹⁵ Order No.
--------------------------------------	------------------------------------	----------------------------------	-------------------------

NO ALLOWABLE WILL BE ASSIGNED TO THIS COMPLETION UNTIL ALL INTERESTS HAVE BEEN CONSOLIDATED
OR A NON-STANDARD UNIT HAS BEEN APPROVED BY THE DIVISION

¹⁶ 5270.76' (REC) 2640.00' (REC) 2697.21' (MEAS) 1190' 850' 5134.03' (MEAS)	RECEIVED DEC - 6 1999 OIL CON. DIV. DIST. 3	¹⁷ OPERATOR CERTIFICATION I hereby certify that the information contained herein is true and complete to the best of my knowledge and belief. Signature <u>Ray Martin</u> Printed Name <u>Ray Martin</u> Title <u>Production Engineer</u> Date <u>12/2/99</u>
		¹⁸ SURVEYOR CERTIFICATION I hereby certify that the well location shown on this plat was plotted from field notes of actual surveys made by me or under my supervision, and that the same is true and correct to the best of my belief. SEPTEMBER 21, 1999 Date of Survey Signature and Seal of Professional Surveyor NEALE C. EDWARDS NEW MEXICO 6857 Certificate Number <u>6857</u>

CROSS TIMBERS OPERATING COMPANY MORRIS GAS COM #1R
850' FSL & 1190' FWL, SECTION 26, T29N, R10W, NMPM, SAN JUAN COUNTY, NM
GROUND ELEVATION: 5537' DATE: SEPTEMBER 21, 1999



A-A'						
5547'						
5537'						
5527'						

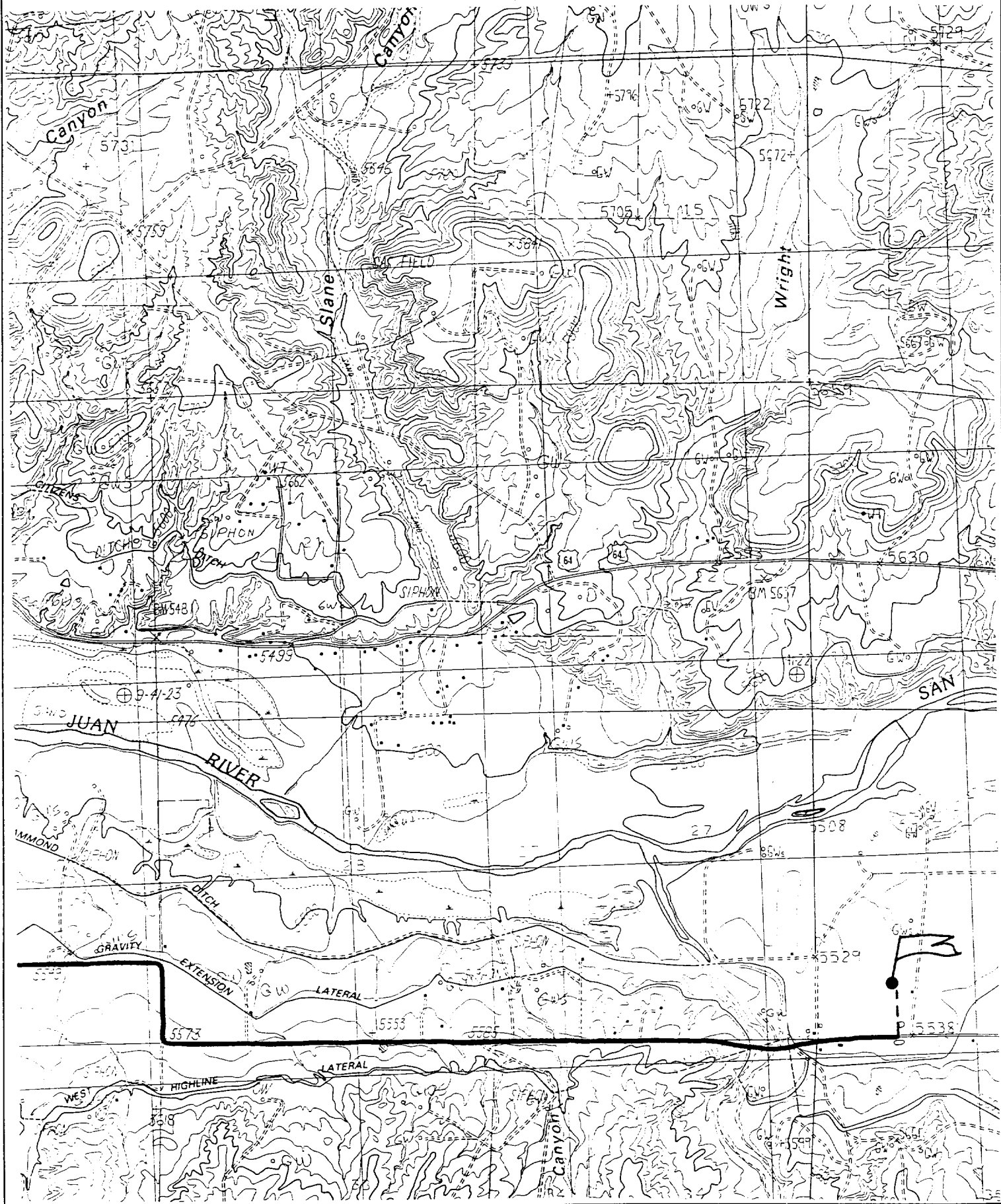
B-B'						
5547'						
5537'						
5527'						

C-C'						
5547'						
5537'						
5527'						

Note: Contractor should call One-Call for location of any marked or unmarked buried pipelines or cables on wellpad and/or access road at least two (2) working days prior to construction.

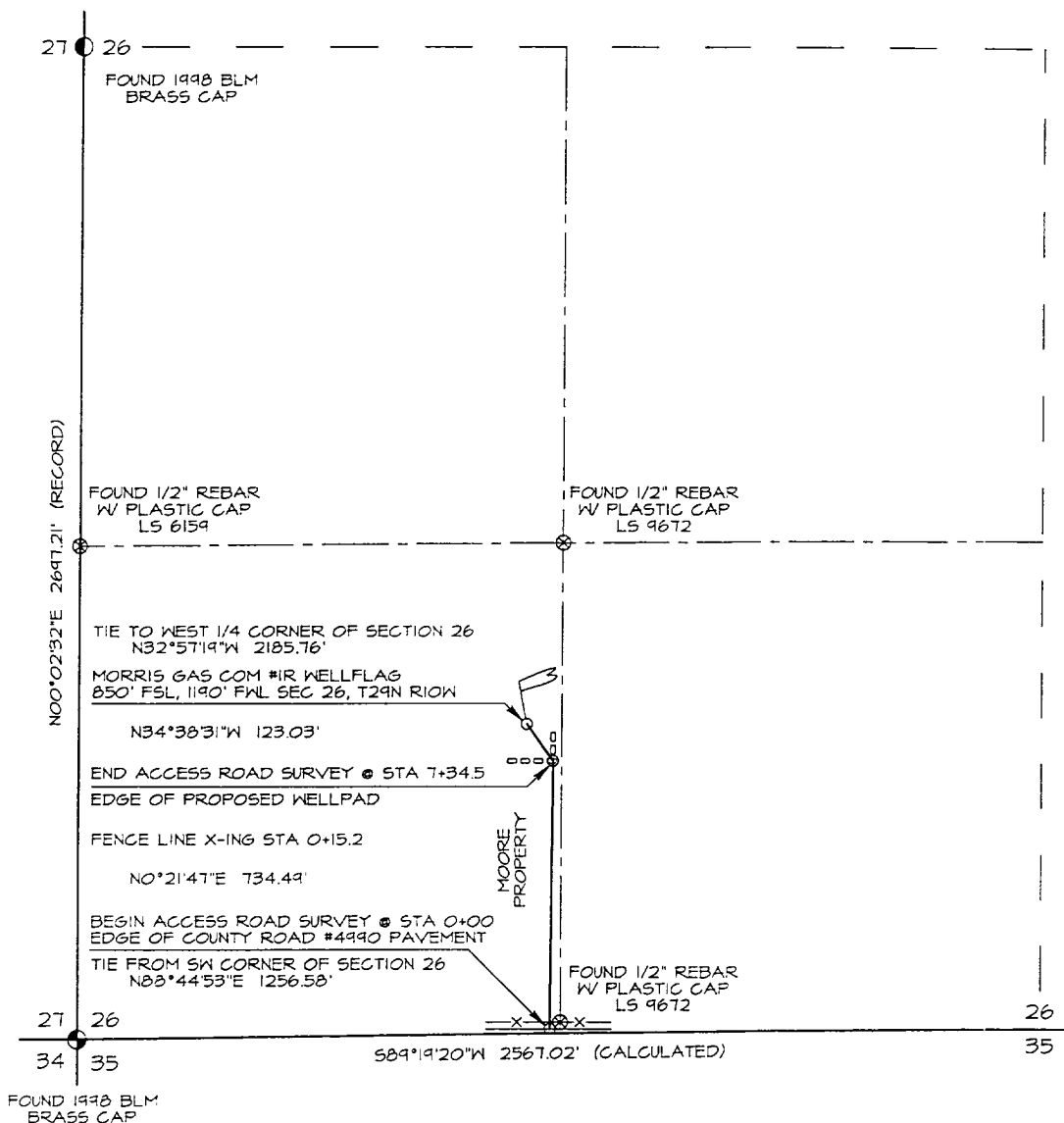
CROSS TIMBERS OPERATING COMPANY MORRIS GAS COM #1R

850' FSL & 1190' FWL, SECTION 26, T29N, R10W, N.M.P.M.
SAN JUAN COUNTY, NEW MEXICO



**CROSS TIMBERS OPERATING COMPANY
MORRIS GAS COM #1R ACCESS ROAD SURVEY
SW/4 SW/4 SECTION 26, T29N, R10W, N.M.P.M.,
SAN JUAN COUNTY, NEW MEXICO**

GRAPHIC SCALE 1"=500'



BASIS OF BEARING:
REAL-TIME KINEMATIC GPS SURVEY
SOLUTION OBTAINED FROM SATELLITES
TRACKED ON SEPTEMBER 21, 1999 FROM
A REFERENCE STATION POSITIONED IN
THE SE/4 SE/4 OF SECTION 16, T29N, R10W

OWNERSHIP		
Fee (Moore)	0+00.0 TO 7+34.5	734.5 FT / 44.5 RCDS



I, Neale C. Edwards, a registered professional surveyor under the laws of the State of New Mexico, hereby certify that this plat was prepared from field notes of an actual survey meeting the minimum requirements of the standards for right-of-way surveys and is true and correct to the best of my knowledge and belief.

Neale C. Edwards Date: 4-28-99
Neale C. Edwards,
N.M. R.L.S. #6857

Prepared for:
CROSS TIMBERS OPERATING COMPANY
3000 N. GARFIELD SUITE 175
MIDLAND, TX 79705

SURVEYS, INC.

Land Surveyor:
Neale C. Edwards

Mailing Address:
Post Office Box 6612
Farmington, NM 87499

Business Address:
111 East Pinon Street
Farmington, NM 87402
(505) 325-2654 (Office)
(505) 326-5650 (Fax)

CHECKED BY: NCE
DRAWN BY: JLE
SHEET 1 OF 1
FILENAME: 281026.MXD