

District I
PO Box 1980, Hobbs, NM 88241-1980
District II
811 S. 1st Street, Artesia, NM 88210-2834
District III
1000 Rio Brazos Rd., Aztec, NM 87410
District IV
2040 South Pacheco, Santa Fe, NM 87505

State of New Mexico
Energy, Minerals & Natural Resources Department

OIL CONSERVATION DIVISION
2040 South Pacheco
Santa Fe, NM 87505

Form C-101
Revised October 18, 1996
Instructions on back
Submit to Appropriate District Office
State Lease - 6 Copies
Fee Lease - 5 Copies

AMENDED REPORT

APPLICATION FOR PERMIT TO DRILL, RE-ENTER, DEEPEN, PLUGBACK, OR ADD A ZONE

¹ Operator name and Address Cross Timbers Operating Company 2700 Farmington Ave., Bldg. K. Ste 1 Farmington, NM 87401		² OGRID Number 167067
⁴ Property Code 23073	⁵ Property Name Morris Gas Com	³ API Number 30-0 45-30070
		⁶ Well No. 1R

⁷ Surface Location									
UL or lot no.	Section	Township	Range	Lot. Idn	Feet from the	North/South Line	Feet from the	East/West line	County
M	26	29N	10W		885	South		West	San Juan

⁸ Proposed Bottom Hole Location If Different From Surface									
UL or lot no.	Section	Township	Range	Lot. Idn	Feet from the	North/South Line	Feet from the	East/West line	County

⁹ Proposed Pool 1 Aztec Pictured Cliffs	¹⁰ Proposed Pool 2
-------------------------------------------------------	-------------------------------

¹¹ Work Type Code N	¹² Well Type Code G	¹³ Cable/Rotary R	¹⁴ Lease Type Code P	¹⁵ Ground Level Elevation 5,537'
¹⁶ Multiple No	¹⁷ Proposed Depth 2,150'	¹⁸ Formation Pictured Cliffs	¹⁹ Contractor Not awarded	²⁰ Spud Date Spring 2000

²¹ Proposed Casing and Cement Program

Hole Size	Casing Size	Casing weight/foot	Setting Depth	Sacks of Cement	Estimated TOC
8-3/4"	7"	20#, J-55, STC	200'	85	Surface
6-1/4"	4-1/2"	10.5#, J-55, STC	2,150'	175	Surface

²² Describe the proposed program. If this application is to DEEPEN or PLUG BACK give the data on the present productive zone and proposed new productive zone. Describe the blowout prevention program, if any. Use additional sheets if necessary.

Surface casing cement program: Approximately 85 sacks of Class "B" cement containing 2% CaCl₂ & 1/4 pps celloflake. Circulate cement to surface.

Production casing cement program: Approximately 175 sacks (est 415 cu ft) Class "B" cement containing 2% D-79, 2% CaCl₂ & 1/4 pps celloflake. Circulate cement to surface. Cement volume will be calculated from caliper log.

BOP program: 11" x 3,000 psig double ram BOP

²³ I hereby certify that the information given above is true and complete to the best of my knowledge and belief.

Signature:

Ray Martin

Printed name: Ray Martin

Title: Operation Engineer

OIL CONSERVATION DIVISION

Approved by: ORIGINAL SIGNED BY CHARLIE T. PEPIN

Title: DEPUTY OIL & GAS INSPECTOR, DIST. #3

Approval Date: MAR 16 2000 Expiration Date:

District I
PO Box 1980, Hobbs, NM 88241-1980

District II
PO Drawer 00, Artesia, NM 88211-0719

District III
1000 Rio Brazos Rd., Aztec, NM 87410

District IV
PO Box 2088, Santa Fe, NM 87504-2088

State of New Mexico
Energy, Minerals & Natural Resources Department

OIL CONSERVATION DIVISION
PO Box 2088
Santa Fe, NM 87504-2088

Revised February 2
Instructions on
Submit to Appropriate District Office
State Lease - 4 Cop.
Fee Lease - 3 Copies

☒ AMENDED REPORT

WELL LOCATION AND ACREAGE DEDICATION PLAT

*API Number		*Pool Code 71280	*Pool Name AZTEC PICTURED CLIFFS
*Property Code	*Property Name MORRIS GAS COM		*Well Number 1R
*GRID No. 167067	*Operator Name CROSS TIMBERS OPERATING COMPANY		*Elevation 5538'

¹⁰ Surface Location

UL or lot no.	Section	Township	Range	Lot	Feet from the	North/South line	Feet from the	East/West line	County
M	26	29N	10W		885	SOUTH	1240	WEST	SAN JUAN

¹¹ Bottom Hole Location If Different From Surface

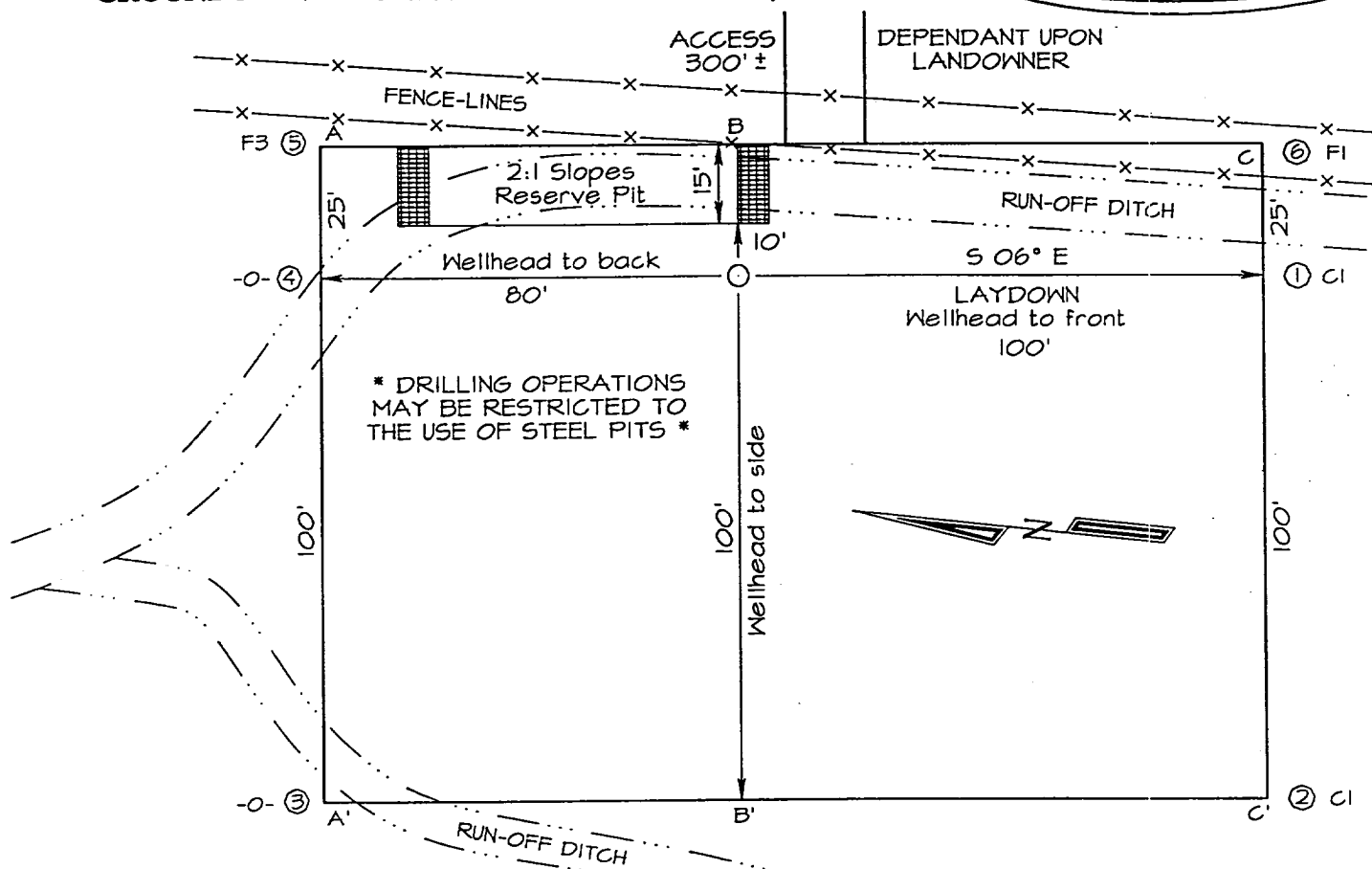
UL or lot no.	Section	Township	Range	Lot	Feet from the	North/South line	Feet from the	East/West line	County
¹² Dedicated Acres 160		¹³ Joint or Infill N		¹⁴ Consolidation Code		¹⁵ Order No.			

NO ALLOWABLE WILL BE ASSIGNED TO THIS COMPLETION UNTIL ALL INTERESTS HAVE BEEN CONSOLIDATED
OR A NON-STANDARD UNIT HAS BEEN APPROVED BY THE DIVISION

¹⁶ 2640.00' (REC) 2697.21' (MEAS) 1240' 885' 5134.03' (MEAS)	5270.76' (REC)	¹⁷ OPERATOR CERTIFICATION I hereby certify that the information contained herein is true and complete to the best of my knowledge and belief. Signature Ray Martin Printed Name Ray Martin Production Engineer Title Date ¹⁸ SURVEYOR CERTIFICATION I hereby certify that the well location shown on this plat was plotted from field notes of actual surveys made by me or under my supervision, and that the same is true and correct to the best of my belief. MARCH 8, 2000 Date of Survey Signature and Seal of Professional Surveyor NEALE C. EDWARDS NEW MEXICO 6857 Certificate Number 6857
	5280.00' (REC)	

CROSS TIMBERS OPERATING COMPANY MORRIS GAS COM #1R
885' FSL & 1240' FWL, SECTION 26, T29N, R10W
NMPM, SAN JUAN COUNTY, NEW MEXICO
GROUND ELEVATION: 5538' DATE: MARCH 8, 2000

LATITUDE: 36°41'33"
LONGITUDE: 107°51'32"



A-A'						
5548'						
5538'						
5528'						

B-B'						
5548'						
5538'						
5528'						

C-C'						
5548'						
5538'						
5528'						

Note: Contractor should call One-Call for location of any marked or unmarked buried pipelines or cables

CROSS TIMBERS OPERATING COMPANY MORRIS GAS COM #1R

885' FSL & 1240' FWL, SECTION 26, T29N, R10W, N.M.P.M.
SAN JUAN COUNTY, NEW MEXICO

