

UNITED STATES
DEPARTMENT OF THE INTERIOR
BUREAU OF LAND MANAGEMENT

APPLICATION FOR PERMIT TO DRILL, DEEPEN, OR PLUG BACK

| | | |
|---|--|-----------------|
| 1a. Type of Work DRILL | 5. Lease Number SF-075587 Unit Reporting Number | |
| 1b. Type of Well GAS | 6. If Indian, All. or Tribe | |
| 2. Operator BURLINGTON RESOURCES Oil & Gas Company | 7. Unit Agreement Name | |
| 3. Address & Phone No. of Operator PO Box 4289, Farmington, NM 87499 (505) 326-9700 | 8. Farm or Lease Name Reid Pri 9. Well Number #2R | |
| 4. Location of Well 1635' FSL, 1530' FWL Latitude 36° 43.4, Longitude 108° 03.2 | 10. Field, Pool, Wildcat Basin Fruitland Coal/ Fulcher Kutz Pict'd Cliffs 11. Sec., Twn, Rge, Mer. (NMPM) K Sec. 13, T-29-N, R-12-W API# 30-045-30813 | |
| 14. Distance in Miles from Nearest Town 5 miles from Bloomfield | 12. County San Juan | 13. State NM |
| 15. Distance from Proposed Location to Nearest Property or Lease Line 1530' | | |
| 16. Acres in Lease | 17. Acres Assigned to Well FC: 307.26 S/2 PC: 154.4 SW/4 | |
| 18. Distance from Proposed Location to Nearest Well, Drig, Compl, or Applied for on this Lease 1000' | | |
| 19. Proposed Depth 1921' | 20. Rotary or Cable Tools Rotary | |
| 21. Elevations (DF, FT, GR, Etc.) 5638' GR | 22. Approx. Date Work will Start | |
| 23. Proposed Casing and Cementing Program See Operations Plan attached | DRILLING OPERATIONS AUTHORIZED ARE SUBJECT TO COMPLIANCE WITH ATTACHED "GENERAL REQUIREMENTS" | |
| 24. Authorized by: <u>Peggy Cole</u> Regulatory/Compliance Supervisor | Date <u>9-17-01</u> | |

PERMIT NO.

APPROVAL DATE

APPROVED BY

TITLE

DATE

Archaeological Report to be submitted

Threatened and Endangered Species Report to be submitted

NOTE: This format is issued in lieu of U.S. BLM Form 3160-3

Title 18 U.S.C. Section 1001, makes it a crime for any person knowingly and willfully to make to any department or agency of the United States any false, fictitious or fraudulent statements or presentations as to any matter within its jurisdiction.

This action is subject to technical and procedural review pursuant to 43 CFR 3185.1 and appeal pursuant to 43 CFR 3185.4.

NM3008

K

District I
PO Box 1980, Hobbs, NM 88241-1980

District II
PO Drawer DD, Artesia, NM 88211-0719

District III
1000 Rio Brazos Rd., Aztec, NM 87410

District IV
PO Box 2088, Santa Fe, NM 87504-2088

State of New Mexico
Energy, Minerals & Natural Resources Department

OIL CONSERVATION DIVISION

PO Box 2088
Santa Fe, NM 87504-2088

Form C-102
Revised February 21, 1994
Instructions on back
Submit to Appropriate District Office
State Lease - 4 Copies
Fee Lease - 3 Copies

☐ AMENDED REPORT

WELL LOCATION AND ACREAGE DEDICATION PLAT

| | | | |
|-----------------------------|---|---------------------------|---|
| *API Number 30-045-30843 | | *Pool Code 77200/71629 | *Pool Name Fulcher Kutz Pictured Cliffs/Basin Fruitland Coal |
| *Property Code 18609 | *Property Name REID PRI | | *Well Number 2R |
| *GRID No. 14538 | *Operator Name BURLINGTON RESOURCES OIL & GAS COMPANY LP | | *Elevation 5638' |

¹⁰ Surface Location

| UL or lot no. | Section | Township | Range | Lot Idn | Feet from the | North/South line | Feet from the | East/West line | County |
|---------------|---------|----------|-------|---------|---------------|------------------|---------------|----------------|----------|
| K | 13 | 29N | 12W | | 1635 | SOUTH | 1530 | WEST | SAN JUAN |

¹¹ Bottom Hole Location If Different From Surface

| UL or lot no. | Section | Township | Range | Lot Idn | Feet from the | North/South line | Feet from the | East/West line | County |
|---------------|---------|----------|-------|---------|---------------|------------------|---------------|----------------|--------|
| | 13 | 29N | 12W | | | | | | |

| | | | |
|--|-------------------------------|----------------------------------|-------------------------|
| ¹² Dedicated Acres FC 307.26 S2 PC 154.42SW | ¹³ Joint or Infill | ¹⁴ Consolidation Code | ¹⁵ Order No. |
| | | | |

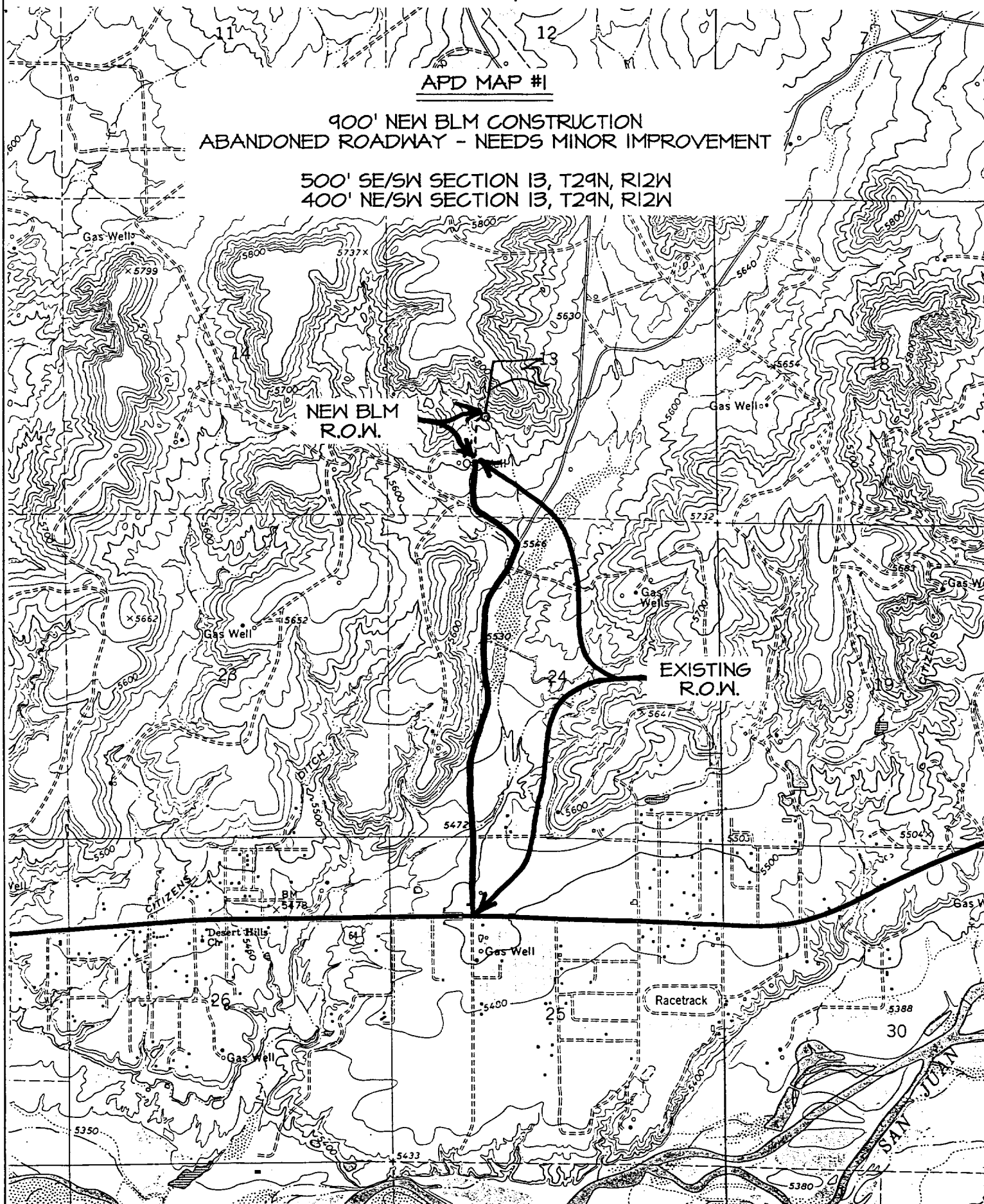
NO ALLOWABLE WILL BE ASSIGNED TO THIS COMPLETION UNTIL ALL INTERESTS HAVE BEEN CONSOLIDATED OR A NON-STANDARD UNIT HAS BEEN APPROVED BY THE DIVISION

| | | | | | | | |
|---------------|--|--|--|---|--|--|--|
| ¹⁶ | | | | ¹⁷ OPERATOR CERTIFICATION | | | |
| LOT 4 | | | | I hereby certify that the information contained herein is true and complete to the best of my knowledge and belief | | | |
| LOT 3 | | | | Signature <u>Peggy Cole</u> | | | |
| LOT 2 | | | | Printed Name <u>Peggy Cole</u> | | | |
| LOT 1 | | | | Regulatory Supervisor <u>9-17-01</u> | | | |
| LOT 5 | | | | Title <u>9-17-01</u> | | | |
| LOT 6 | | | | Date | | | |
| LOT 8 | | | | ¹⁸ SURVEYOR CERTIFICATION | | | |
| LOT 12 | | | | I hereby certify that the well location shown on this plat was plotted from field notes of actual surveys made by me or under my supervision, and that the same is true and correct to the best of my belief. | | | |
| LOT 11 | | | | MAY 29, 2001 | | | |
| LOT 10 | | | | Date of Survey | | | |
| LOT 9 | | | | Signature and Seal of Professional Surveyor | | | |
| LOT 13 | | | | NEALE G EDWARDS | | | |
| LOT 14 | | | | NEW MEXICO | | | |
| LOT 15 | | | | 6857 | | | |
| LOT 16 | | | | Certificate 6857 | | | |

1635' FSL & 1530' FWL, SECTION 13, T29N, R12W, N.M.P.M.
SAN JUAN COUNTY, NEW MEXICO

900' NEW BLM CONSTRUCTION
ABANDONED ROADWAY - NEEDS MINOR IMPROVEMENT

500' SE/SW SECTION 13, T29N, R12W
400' NE/SW SECTION 13, T29N, R12W



OPERATIONS PLAN

Well Name: Reid Pri #2R
Location: 1635' FSL, 1530' FWL Section 13, T-29-N, R-12-W
Latitude 36° 43.4' N, Longitude 108° 03.2' W
San Juan County, NM
Formation: Basin Fruitland Coal/Fulcher Kutz Pictured Cliffs
Elevation: 5638' GL

| Formation: | Top | Bottom | Contents |
|-----------------|----------|--------|----------|
| Surface | San Jose | 402' | |
| Ojo Alamo | 402' | 561' | aquifer |
| Kirtland | 561' | 1134' | gas |
| Fruitland | 1134' | 1721' | gas |
| Pictured Cliffs | 1721' | 1921' | gas |
| Total Depth | 1921' | | |

Logging Program: Open hole: none

Cased hole: CBL/GR/CCL

Mudlog: none

Coring Program: none

Mud Program:

| Interval | Type | Weight | Vis. | Fluid Loss |
|-----------|---------------|---------|-------|------------|
| 0- 120' | Spud | 8.4-9.0 | 40-50 | no control |
| 120-1921' | Non-dispersed | 8.4-9.5 | 30-60 | no control |

Casing Program (as listed, the equivalent, or better):

| Hole Size | Depth Interval | Csg. Size | Wt. | Grade |
|-----------|----------------|-----------|-------|-------|
| 9 7/8" | 0' - 120' | 7" | 20.0# | J-55 |
| 6 1/4" | 0' - 1921' | 4 1/2" | 10.5# | K-55 |

Tubing Program:

| | | | |
|------------|--------|------|------|
| 0' - 1921' | 2 3/8" | 4.7# | J-55 |
|------------|--------|------|------|

Float Equipment: 7" surface casing - saw tooth guide shoe. Centralizers will be run in accordance with Onshore Order #2.

4 1/2" production casing - guide shoe and self-fill float collar. Three centralizers run every other joint above shoe. Seven centralizers run every 3rd joint to the base of the Ojo Alamo @ 561'. Two turbolizing type centralizers - one below and one into the base of the Ojo Alamo @ 561'. Standard centralizers thereafter every fourth joint up to the base of the surface pipe.

Wellhead Equipment: 7" x 4 1/2" x 2 3/8" x 11" 2000 psi screw on independent wellhead.

Cementing:

7" surface casing - cement with 27 sx Class A, B Portland Type I, II cement (32 cu.ft. of slurry, bring cement to surface through 3/4" line). WOC 8 hrs. Test casing to 600 psi for 30 minutes.

4 1/2" production casing - Lead w/244 sx Premium Lite cement w/3% calcium chloride, 1/4 pps flocele, 5 pps LCM-1, 0.4% FL-52, and 0.4% SMS. Tail w/90 sx Type III cement w/1% calcium chloride, 1/4 pps flocele, and 0.2% FL-52 (646 cu.ft. of slurry, 100% excess to circulate to surface.)

Note: If open hole logs are run, cement volumes will be based on 25% excess over caliper volumes.

BOP and tests:

Surface to TD - 11" 2000 psi (minimum double gate BOP stack (Reference Figure #1). Prior to drilling out surface casing, test rams to 600 psi/30 min.

Completion - 7 1/16" 2000 psi (minimum) double gate BOP stack (Reference Figure #2). Prior to completion operations, test rams and casing to 2000 psi/15 min.

From surface to TD - choke manifold (Reference Figure #3).

Pipe rams will be actuated to least once each day and blind rams actuated once each trip to test proper functioning. An upper kelly cock valve with handle and drill string safety valves to fit each drill string will be maintained and available on the rig floor.

BOP and tests (If a coiled tubing drilling (CTD) rig is utilized.):

Surface to TD: 7-1/16" 2000 psi (minimum) Torus annular BOP stack (Reference Figure #1b). Prior to drilling out surface casing, test annular BOP to 600psi/30 min.

Completion: 7-1/16" 2000 psi (minimum) double gate BOP stack (Reference Figure #2). Prior to completion operations, test blind rams and casing to 1500 psi for 30 minutes; all pipe rams and casing to 1500 psi for 30 minutes each. **Same as in original APD operations plan.**

From surface to TD: choke manifold (Reference Figure #3). **Same as in original APD operations plan.**

The annular BOP will be actuated to close on drill pipe (coiled tubing) at least once each day and to close on open hole once each trip to test proper functioning.

Additional information:

- * The Fruitland Coal & Pictured Cliffs formations will be completed and commingled.
- * Anticipated pore pressure for the Fruitland is 570 psi.
- * Anticipated pore pressure for the Pictured Cliffs is 500 psi.
- * This gas is dedicated.
- * The south half of Section 13 is dedicated to the Fruitland Coal and the southwest quarter of Section 13 is dedicated to the Pictured Cliffs.

Em J. Dils
Drilling Engineer

9/20/01
Date