

District I

PO Box 1980, Hobbs, NM 88241-1980

District II

811 South First, Artesia, NM 88210

District III

1000 Rio Brazos Rd., Aztec, NM 87410

District IV

2040 South Pacheco, Santa Fe, NM 87505

State of New Mexico

Energy, Minerals & Natural Resources Department

OIL CONSERVATION DIVISION

2040 South Pacheco

Santa Fe, NM 87505

Form C-101

Revised October 18, 1994

Instructions on back

Submit to Appropriate District Office

State Lease - 6 Copies

Fee Lease - 5 Copies

AMENDED REPORT

APPLICATION FOR PERMIT TO DRILL, RE-ENTER, DEEPEN, PLUGBACK, OR ADD A ZONE

¹ Operator Name and Address. Burlington Resources Oil & Gas Company PO Box 4289, Farmington, NM 87499		² OGRID Number 14538
		³ API Number 30 - 045-30941
⁴ Property Code 7290	⁵ Property Name Martin	⁶ Well No. 4R

⁷ Surface Location

UL or lot no.	Section	Township	Range	Lot Idn	Feet from the	North/South line	Feet from the	East/West line	County
C	3	29N	11W		970	North	1660	West	San Juan

⁸ Proposed Bottom Hole Location If Different From Surface

UL or lot no.	Section	Township	Range	Lot Idn	Feet from the	North/South line	Feet from the	East/West line	County
⁹ Proposed Pool 1 Aztec Pictured Cliffs					¹⁰ Proposed Pool 2				

¹¹ Work Type Code N	¹² Well Type Code G	¹³ Cable/Rotary Rotary	¹⁴ Lease Type Code Fee	¹⁵ Ground Level Elevation 5740'
¹⁶ Multiple N	¹⁷ Proposed Depth 2230'	¹⁸ Formation Pictured Cliffs	¹⁹ Contractor N/a	²⁰ Spud Date N/a

²¹ Proposed Casing and Cement Program

Hole Size	Casing Size	Casing weight/foot	Setting Depth	Sacks of Cement	Estimated TOC
8 3/4"	7"	20#	120	54 cu.ft.	Surface
6 1/4"	2 7/8"	6.5#	2230	711 cu.ft.	Surface

²² Describe the proposed program. If this application is to DEEPEN or PLUG BACK give the data on the present productive zone and proposed new productive zone. Describe the blowout prevention program, if any. Use additional sheets if necessary.

11" 2000 psi minimum double gate BOP

²³ I hereby certify that the information given above is true and complete to the best of my knowledge and belief. Signature: <i>Peggy Cole</i>		OIL CONSERVATION DIVISION	
Printed name: Peggy Cole		Approved by: <i>Steve Hough</i>	
Title: Regulatory/Compliance Supervisor		Title: <i>Steve Hough</i>	
Date: 12-12-01		Approval Date: DEC 12 2001	Expiration Date: DEC 12 2001
Phone: 505-326-9700		Conditions of Approval: Attached <input type="checkbox"/>	

District I
PO Box 1980, Hobbs, NM 88241-1980

District II
PO Drawer DD, Artesia, NM 88211-0719

District III
1000 Rio Brazos Rd., Aztec, NM 87410

District IV
PO Box 2088, Santa Fe, NM 87504-2088

State of New Mexico
Energy, Minerals & Natural Resources Department

OIL CONSERVATION DIVISION
PO Box 2088
Santa Fe, NM 87504-2088

Form C-102
Revised February 21, 1994
Instructions on back
Submit to Appropriate District Office
State Lease - 4 Copies
Fee Lease - 3 Copies

☐ AMENDED REPORT

WELL LOCATION AND ACREAGE DEDICATION PLAT

*API Number 30-045 30944		*Pool Code 71280	*Pool Name Aztec Pictured Cliffs
*Property Code 7290	*Property Name MARTIN		*Well Number 4R
*OGRID No. 14538	*Operator Name BURLINGTON RESOURCES OIL & GAS COMPANY LP		*Elevation 5740'

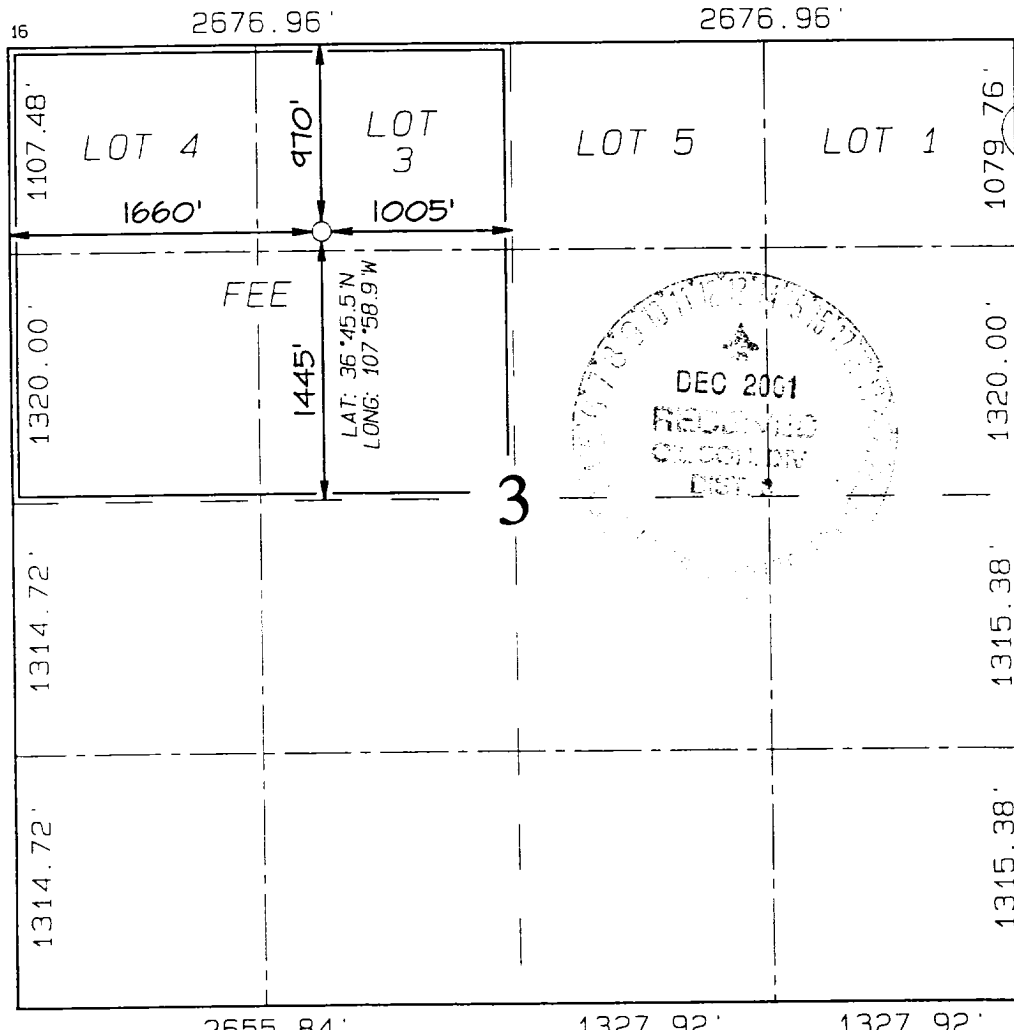
¹⁰ Surface Location

UL or lot no.	Section	Township	Range	Lot Idn	Feet from the	North/South line	Feet from the	East/West line	County
C	3	29N	11W		970	NORTH	1660	WEST	SAN JUAN

¹¹ Bottom Hole Location If Different From Surface

UL or lot no.	Section	Township	Range	Lot Idn	Feet from the	North/South line	Feet from the	East/West line	County
¹² Dedicated Acres PC-NW/145.53					¹³ Joint or Infill	¹⁴ Consolidation Code	¹⁵ Order No.		

NO ALLOWABLE WILL BE ASSIGNED TO THIS COMPLETION UNTIL ALL INTERESTS HAVE BEEN CONSOLIDATED
OR A NON-STANDARD UNIT HAS BEEN APPROVED BY THE DIVISION



¹⁷ OPERATOR CERTIFICATION

I hereby certify that the information contained herein is true and complete to the best of my knowledge and belief

Peggy Cole
Signature
Peggy Cole
Printed Name
Regulatory Supervisor
Title
12-12-01
Date

¹⁸ SURVEYOR CERTIFICATION

I hereby certify that the well location shown on this plat was plotted from field notes of actual surveys made by me or under my supervision, and that the same is true and correct to the best of my belief.

Survey Date: NOVEMBER 2, 2001

Signature and Seal of Professional Surveyor

JASON C. EDWARDS
Certificate Number 15269