

UNITED STATES
DEPARTMENT OF THE INTERIOR
GEOLOGICAL SURVEY

APPLICATION FOR PERMIT TO DRILL, DEEPEN, OR PLUG BACK

1a. TYPE OF WORK

DRILL ☒DEEPEN ☐PLUG BACK ☐

b. TYPE OF WELL

OIL
WELL ☐GAS
WELL ☒

OTHER

SINGLE
ZONE ☒MULTIPLE
ZONE ☐

2. NAME OF OPERATOR

Mitchell Energy Corp. (303) 861-2226

3. ADDRESS OF OPERATOR

3200 Amoco Bldg., 1670 Broadway, Denver, Colorado 80202

4. LOCATION OF WELL (Report location clearly and in accordance with any State requirements.)*
At surface 1030' FNL 1100' FEL Sec.-7, TWP.-31N, R-4W

At proposed prod. zone Dakota Formation

14. DISTANCE IN MILES AND DIRECTION FROM NEAREST TOWN OR POST OFFICE*

63 Mi. Northeast of Blanco Nes Mexico

15. DISTANCE FROM PROPOSED*

LOCATION TO NEAREST

PROPERTY OR LEASE LINE, FT.

(Also to nearest drlg. unit line, if any) 1080' FNL

18. DISTANCE FROM PROPOSED LOCATION*

TO NEAREST WELL, DRILLING, COMPLETED,

OR APPLIED FOR, ON THIS LEASE, FT. None

16. NO. OF ACRES IN LEASE

2540

19. PROPOSED DEPTH

8200'

17. NO. OF ACRES ASSIGNED
TO THIS WELL

E/ 320

20. ROTARY OR CABLE TOOLS

Rotary

21. ELEVATIONS (Show whether DF, RT, GR, etc.)

6483' GR

22. APPROX. DATE WORK WILL START*

July 1, 1981

23. PROPOSED CASING AND CEMENTING PROGRAM

SIZE OF HOLE	SIZE OF CASING	WEIGHT PER FOOT	SETTING DEPTH	QUANTITY OF CEMENT
14 3/4"	10 3/4"	32.75 #	0-350'	Cement to Surface
9 1/2"	7"	26 #	0-4000'	Approx. 400 SX in 2 Stages
6 1/8"	4 1/2"	11.6 #	3600-8200'	Approx. 365 SX.

Operator expects to drill to a depth sufficient to test the Dakota for gas. If productive, 4 1/2" casing will be run and set at 8200'. If non-productive, well will be abandoned in a manner consistent with Federal Regulations. Any zones above Dakota will be tested for productivity prior to abandonment.

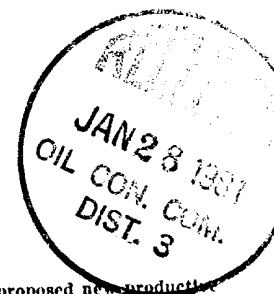
Exhibits Attached:

- Ten Point Compliance Program
- Multipoint Requirements For APD
- #1 Blowout Preventor Schematic
- #2 Location and Elevation Plat
- #3 Access Road
- #4 Access Road
- #5 Radius Map
- #6 Production Facilities

DRILLING OPERATIONS AUTHORIZED ARE
SUBJECT TO APPROVAL WITH ATTACHED

- #7 Cut and Fill Cross Section
- #8 Drilling Rig Layout
- #9 Letter of Agent

This action is subject to administrative
approval pursuant to 30 CFR 290.



IN ABOVE SPACE DESCRIBE PROPOSED PROGRAM: If proposal is to deepen or plug back, give data on present productive zone and proposed new productive zone. If proposal is to drill or deepen directionally, give pertinent data on subsurface locations and measured and true vertical depths. Give blowout preventer program, if any.

SIGNED *[Signature]*

TITLE District Prod. Mngr.

DATE 11/4/80

(This space for Federal or State office use)

APPROVED
PERMIT AS AMENDED

APPROVAL DATE

APPROVED BY

CONDITIONS OF APPROVAL

JAN 07 1981
JAMES F. SIMS
DISTRICT ENGINEER

TITLE

DATE

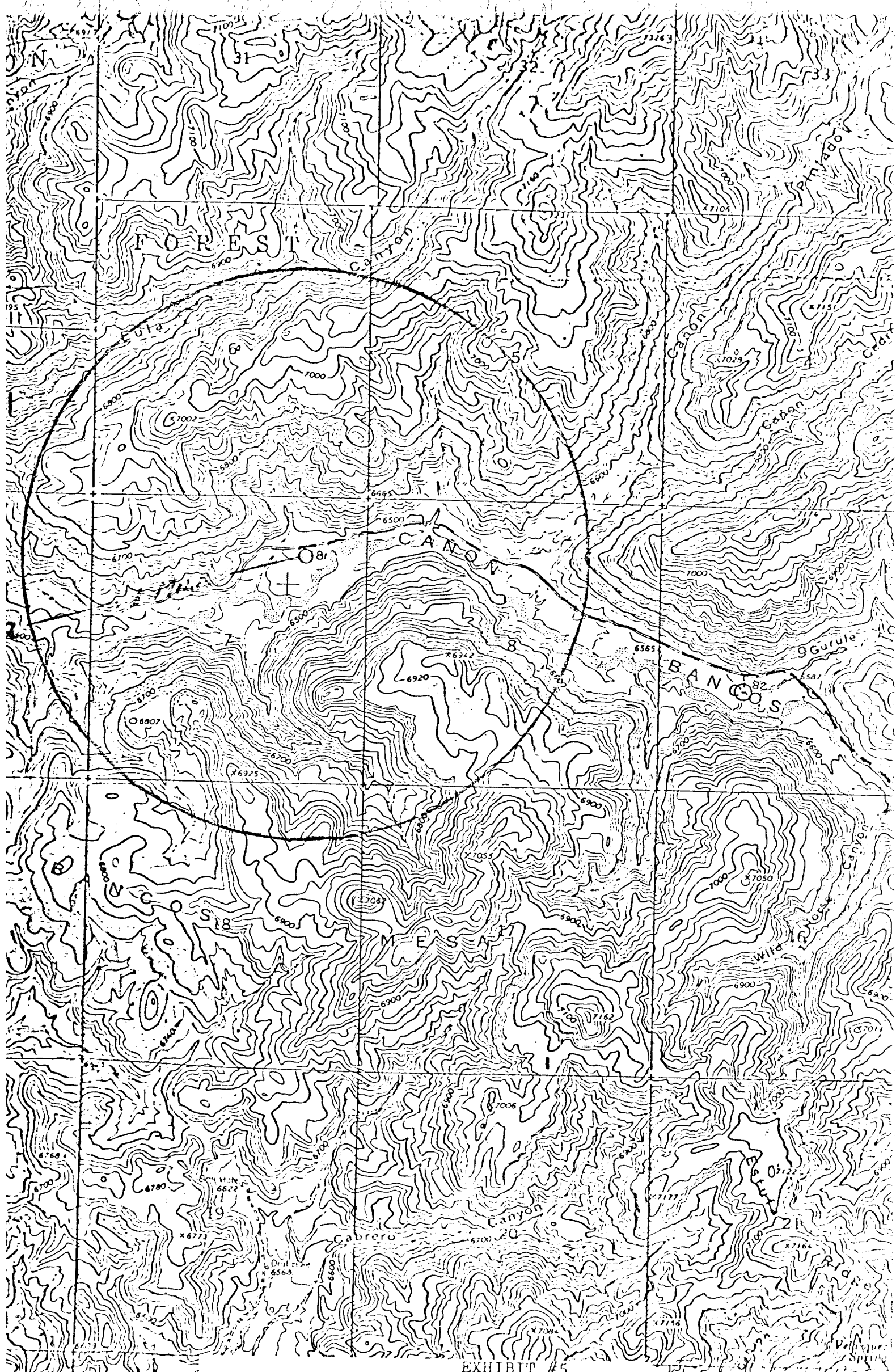
*See Instructions On Reverse Side

All distances must be from the outer boundary of the Section.

consolidated in US...
(by communications un...
has been moved by the
CONF. COM.
DIST. 3
CERTIFICATION

<p align="center">CERTIFICATION</p> <p>I hereby certify that the information contained herein is true and complete to the best of my knowledge and belief.</p> <p><i>Brad W. Fischer</i></p>	
Name	Brad W. Fischer
Position	Area Production Manager
Company	Mitchell Energy Corporation
Date	2/17/81
<p>I hereby certify that the well location shown on this plot was plotted from field notes of actual surveys made by me or under my supervision, and that the same is true and correct to the best of my knowledge and belief.</p>	
Date Surveyed	October 22, 1980
Registered Professional Engineer and Land Surveyor	<p><i>Fred B. Kerr Jr.</i></p> <p>Fred B. Kerr Jr.</p>
Certificate No.	3950

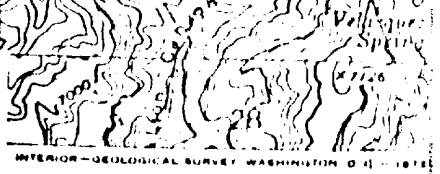
Exhibit #2



R. 5 W. R. 4 W. 195

Vicinity Map for
 MITCHELL ENERGY CORP. #81 ROSA UNIT
 1080'FNL 1100'FEL Sec. 7-T31N-R1W
 RIO ARRIBA COUNTY, NEW MEXICO

EXHIBIT #5



Existing wells or production facilities-NONE