

UNITED STATES
DEPARTMENT OF THE INTERIOR
BUREAU OF LAND MANAGEMENT

APPLICATION FOR PERMIT TO DRILL, DEEPEN, OR PLUG BACK

1a. TYPE OF WORK

DRILL ☒

DEEPEN ☐

PLUG BACK ☐

b. TYPE OF WELL

OIL
WELL ☐

GAS
WELL ☒

OTHER

SINGLE
ZONE ☐

MULTIPLE
ZONE ☒

2. NAME OF OPERATOR

Amoco Production Co.

3. ADDRESS OF OPERATOR

501 Airport Drive, Farmington, N M 87401

4. LOCATION OF WELL (Report location clearly and in accordance with State requirements.)

At surface 925' FSL x 965' FWL

At proposed prod. zone

Same

14. DISTANCE IN MILES AND DIRECTION FROM NEAREST TOWN OR POST OFFICE

19 miles North of Gobernador, New Mexico

10. DISTANCE FROM PROPOSED*

LOCATION TO NEAREST
PROPERTY OR LEASE LINE, FT.
(Also to nearest drlg. unit line, if any) 925'

16. NO. OF ACRES IN LEASE

2560

17. NO. OF ACRES ASSIGNED

TO THIS WELL
320/160

18. DISTANCE FROM PROPOSED LOCATION*

TO NEAREST WELL, DRILLING, COMPLETED,
OR APPLIED FOR, ON THIS LEASE, FT. 2800' SW

19. PROPOSED DEPTH

8156'

20. ROTARY OR CABLE TOOLS

Rotary

21. ELEVATIONS (Show whether DF, RT, GR, etc.)

6344' GR

23.

DRILLING OPERATIONS AUTHORIZED ARE
SUBJECT TO COMPLIANCE WITH ATTACHED

PROPOSED PROGRAM REQUIREMENTS

22. APPROX. DATE WORK WILL START*

As soon as permitted

| SIZE OF HOLE | SIZE OF CASING | WEIGHT PER FOOT | SETTING DEPTH | QUANTITY OF CEMENT |
|--------------|----------------|---------------------------|---------------|-----------------------------|
| 12-1/4" | 9-5/8" | 32.3#, H-40 | 300' | 260cf Class B 2% CACL 2 |
| 7-7/8" | 5-1/2" | 15.5#, K-55 | 8156' | 1A 1097CF 65:35:6 1.98cf/sk |
| | | DV in Mesaverde | | 1B 500 cf 50:50:2 1.21cf/sk |
| | | Cement from TD to surface | | 2A 1597cf 65:35:6 1.98cf/sk |

Amoco proposes to drill the above well to further develop the BasinDK/ Unders. GLP. reservoir. The well will be drilled to the surface casing point using native mud. The well will then be drilled to TD with a low solids nondispersed mud system. Completion design will be based on open hole logs. Copy of all logs will be filed upon completion. Amoco's standard blowout prevention will be employed; see attached drawing for blowout preventer design. Upon completion the well be cleaned and the reserve pit filled and leveled. The gas from this well is undedicated at this time.

This action is subject to technical and
procedural review pursuant to 43 CFR 3165.3
and appeal pursuant to 43 CFR 3166.4.

IN ABOVE SPACE DESCRIBE PROPOSED PROGRAM: If proposal is to deepen or plug back, give data on present productive zone and proposed new productive zone. If proposal is to drill or deepen directionally, give pertinent data on subsurface locations and measured and true vertical depths. Give blowout preventer program, if any.

SIGNED

BDS Shaw

TITLE: Asst. Supervisor

DATE: 6-17-85

(This space for Federal or State office use)

PERMIT NO.

APPROVAL DATE

APPROVED
AS AMENDED

APPROVED BY

TITLE

CONDITIONS OF APPROVAL, IF ANY:

NOV 25 1985

(SGD.) MAT MILLENBACH
M. MILLENBACH
AREA MANAGER

NMOCC

*See Instructions On Reverse Side

All distances must be from the water boundaries of the Section.

| | | | | | | | | |
|--|--------------------------------------|----------------------|--|----------------------|-------------------------------------|-----------------|--|--|
| Operator AMOCO PRODUCTION COMPANY | | | Lease ROSA UNIT | | | Well No. 126 | | |
| Unit Letter M | Section 14 | Township 31 NORTH | Range 6 WEST | County RIO ARRIBA | | | | |
| Actual Footage Location of Well: 925 feet from the SOUTH line and 965 feet from the WEST line | | | | | | | | |
| Ground Level Elev. 6344 | Producing Formation Dakota/Gallup | | Pool Laguna Seca Est. Basin Dakota/Unders. Gallup | | Dedicated Acreage: 320/160 Acres | | | |

1. Outline the acreage dedicated to the subject well by colored pencil or hachure marks on the plat below.
2. If more than one lease is dedicated to the well, outline each and identify the ownership thereof (both as to working interest and royalty).
3. If more than one lease of different ownership is dedicated to the well, have the interests of all owners been consolidated by communitization, unitization, force-pooling, etc?

☒ Yes ☐ No If answer is "yes," type of consolidation Unitized

If answer is "no," list the owners and tract descriptions which have actually been consolidated. (Use reverse side of this form if necessary.)

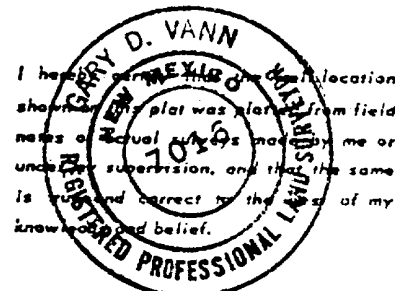
No allowable will be assigned to the well until all interests have been consolidated (by communitization, unitization, forced-pooling, or otherwise) or until a non-standard unit, eliminating such interests, has been approved by the Division.

CERTIFICATION

I hereby certify that the information contained herein is true and complete to the best of my knowledge and belief.

B. D. Shaw

Name
B. D. Shaw
Position
Adm. Supervisor
Company
Amoco Production Co.
Date
4/24/85



Date Surveyed
February 7, 1985
Registered Professional Engineer and/or Land Surveyor
Gary D. Vann
Gary D. Vann
Certificate No.
7016

0 330 660 990 1320 1650 1980 2310 2640 2970 3300 3630 3960 4290 4620 4950 5280 5610 5940 6270 6600

