

JAN 12 1987

Amoco Production Company  
2325 E. 30th Street  
Farmington, NM 87401

Gentlemen:

Enclosed are your Applications for Permit to Drill (APDs) for the following wells:

1. No. 122 Rosa Unit, located in the SW/4SW/4 sec. 28, T. 31 N., R. 5 W., Rio Arriba County, New Mexico on lease SF-078769.
2. No. 123 Rosa Unit, located in the NW/4NE/4 sec. 28, T. 31 N., R. 5 W., Rio Arriba County, New Mexico on lease SF-078769.
3. No. 125 Rosa Unit, located in the NW/4NE/4 sec. 13, T. 31 N., R. 6 W., Rio Arriba County, New Mexico on lease SF-078767.
4. No. 126 Rosa Unit, located in the SW/4SW/4 sec. 14, T. 31 N., R. 6 W., Rio Arriba County, New Mexico on lease SF-078771.

The subject APDs are rescinded and returned due to drilling not being commenced within one year of the approval date.

You are required to request surface rehabilitation instructions from this office if construction activities occurred on the referenced drill sites. If this office does not receive comment within 15 days, it will presume that no construction occurred and proceed accordingly. Later discovery that construction activities have in fact occurred, will result in assessment of liquidated damages.

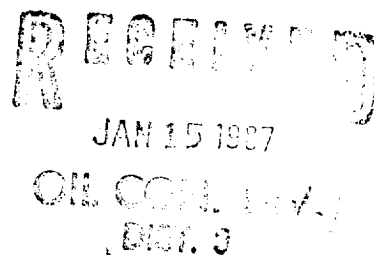
Sincerely,

/s/ John L. Keller

FOR Ron Fellows  
Area Manager

4 Enclosures

cc:  
NMOCD (2)



ABANDONED LOCATION