

30-039-23988

Form 3160-3  
(November 1983)  
(formerly 9-331C)

SUBMIT IN TRIPLICATE\*  
(Other instructions on  
reverse side)

Form approved.  
Budget Bureau No. 1004-0136  
Expires August 31, 1985

UNITED STATES  
DEPARTMENT OF THE INTERIOR  
BUREAU OF LAND MANAGEMENT

APPLICATION FOR PERMIT TO DRILL, DEEPEN, OR PLUG BACK

1a. TYPE OF WORK  
DRILL ☒ DEEPEN ☐ PLUG BACK ☐

b. TYPE OF WELL  
OIL WELL ☐ GAS WELL ☒ OTHER ☐ SINGLE ZONE ☐ MULTIPLE ZONE ☒

2. NAME OF OPERATOR  
Amoco Production Co.

3. ADDRESS OF OPERATOR  
501 Airport Drive, Farmington, N M 87401

4. LOCATION OF WELL (Report location clearly and in accordance with any State requirements)  
At surface 1450' FSL X 2020' FWL  
At proposed prod. zone Same

14. DISTANCE IN MILES AND DIRECTION FROM NEAREST TOWN OR POST OFFICE\*  
36 miles West of Dulce, New Mexico

10. DISTANCE FROM PROPOSED\* LOCATION TO NEAREST PROPERTY OR LEASE LINE, FT. (Also to nearest drlg. unit line, if any)  
1450'

18. DISTANCE FROM PROPOSED LOCATION\* TO NEAREST WELL, DRILLING, COMPLETED, OR APPLIED FOR, ON THIS LEASE, FT.  
N/A

21. ELEVATIONS (Show whether DF, RT, GR, etc.)  
7102' GR

DRILLING OPERATIONS AUTHORIZED ARE  
SUBJECT TO COMPLIANCE WITH ATTACHED  
"GENERAL REQUIREMENTS"

PROPOSED CASING AND CEMENTING PROGRAM

SIZE OF HOLE	SIZE OF CASING	WEIGHT PER FOOT	SETTING DEPTH
12 1/4"	9 5/8"	32.3#, H-40	500'
8 3/4"	5 1/2"	15.5#, K-55	8564'

(See attached supplemental form 3160-3)

CONFIDENTIAL

RECEIVED  
FEB 04 1986  
OIL CON. DIV  
DIST. 3

IN ABOVE SPACE DESCRIBE PROPOSED PROGRAM: If proposal is to deepen or plug back, give data on present productive zone and proposed new productive zone. If proposal is to drill or deepen directionally, give pertinent data on subsurface locations and measured and true vertical depths. Give blowout preventer program, if any.

24. SIGNED BDS Shaw TITLE Adm. Supervisor 11-7-85

APPROVED  
AS AMENDED

(This space for Federal or State office use)

PERMIT NO. \_\_\_\_\_ APPROVAL DATE JAN 29 1986

APPROVED BY \_\_\_\_\_ TITLE \_\_\_\_\_  
CONDITIONS OF APPROVAL, IF ANY: \_\_\_\_\_  
M. MILLERBACH  
AREA MANAGER  
/s/ J. Stan McKee

NMOCC

\*See Instructions On Reverse Side

Title 18 U.S.C. Section 1001, makes it a crime for any person knowingly and willfully to make to any department or agency of the United States any false, fictitious or fraudulent statements or representations as to any matter within its jurisdiction.

NEW MEXICO OIL CONSERVATION COMMISSION  
WELL LOCATION AND ACREAGE DEDICATION PLAT

Form C-102  
Supersedes C-128  
Effective 1-1-65

All distances must be from the outer boundaries of the Section.

Operator <b>AMOCO PRODUCTION COMPANY</b>			Lease <b>JICARILLA APACHE 530</b>		Well No. <b>1</b>
Unit Letter <b>K</b>	Section <b>10</b>	Township <b>31N</b>	Range <b>3W</b>	County <b>Rio Arriba</b>	
Actual Footage Location of Well: <b>1450</b> feet from the <b>South</b> line and <b>2020</b> feet from the <b>West</b> line					
Ground Level Elev. <b>7102</b>	Producing Formation <b>Gallup-Dakota</b>		Pool <b>Wildcat Gallup/Basin Dakota</b>	Dedicated Acreage: <b>160/320</b> Acres.	

1. Outline the acreage dedicated to the subject well by colored pencil or hatchure marks on the plat below.
2. If more than one lease is dedicated to the well, outline each and identify the ownership thereof (both as to working interest and royalty).
3. If more than one lease of different ownership is dedicated to the well, have the interests of all owners been consolidated by communitization, unitization, force-pooling, etc?

☐ Yes ☐ No If answer is "yes," type of consolidation \_\_\_\_\_

If answer is "no," list the owners and tract descriptions which have actually been consolidated. (Use reverse side of this form if necessary.) \_\_\_\_\_

No allowable will be assigned to the well until all interests have been consolidated (by communitization, unitization, forced-pooling, or otherwise) or until a non-standard unit, eliminating such interests, has been approved by the Commission.

**CONFIDENTIAL**

Sec.

10

RECEIVED  
FEB 04 1986  
OIL CON. DIV.  
DIST. 3

**RECEIVED**

NOV 15 1985

BUREAU OF LAND MANAGEMENT  
FARMINGTON RESOURCE AREA

CERTIFICATION

I hereby certify that the information contained herein is true and complete to the best of my knowledge and belief.

*B. D. Shaw*

Name

B. D. Shaw

Position

Adm. Supervisor

Company

Amoco Production Co.

Date

November 7, 1985

I hereby certify that the well location shown on this plat was plotted from field notes of actual surveys made by me or under my supervision, and that the same is true and correct to the best of my knowledge and belief.

Date Surveyed

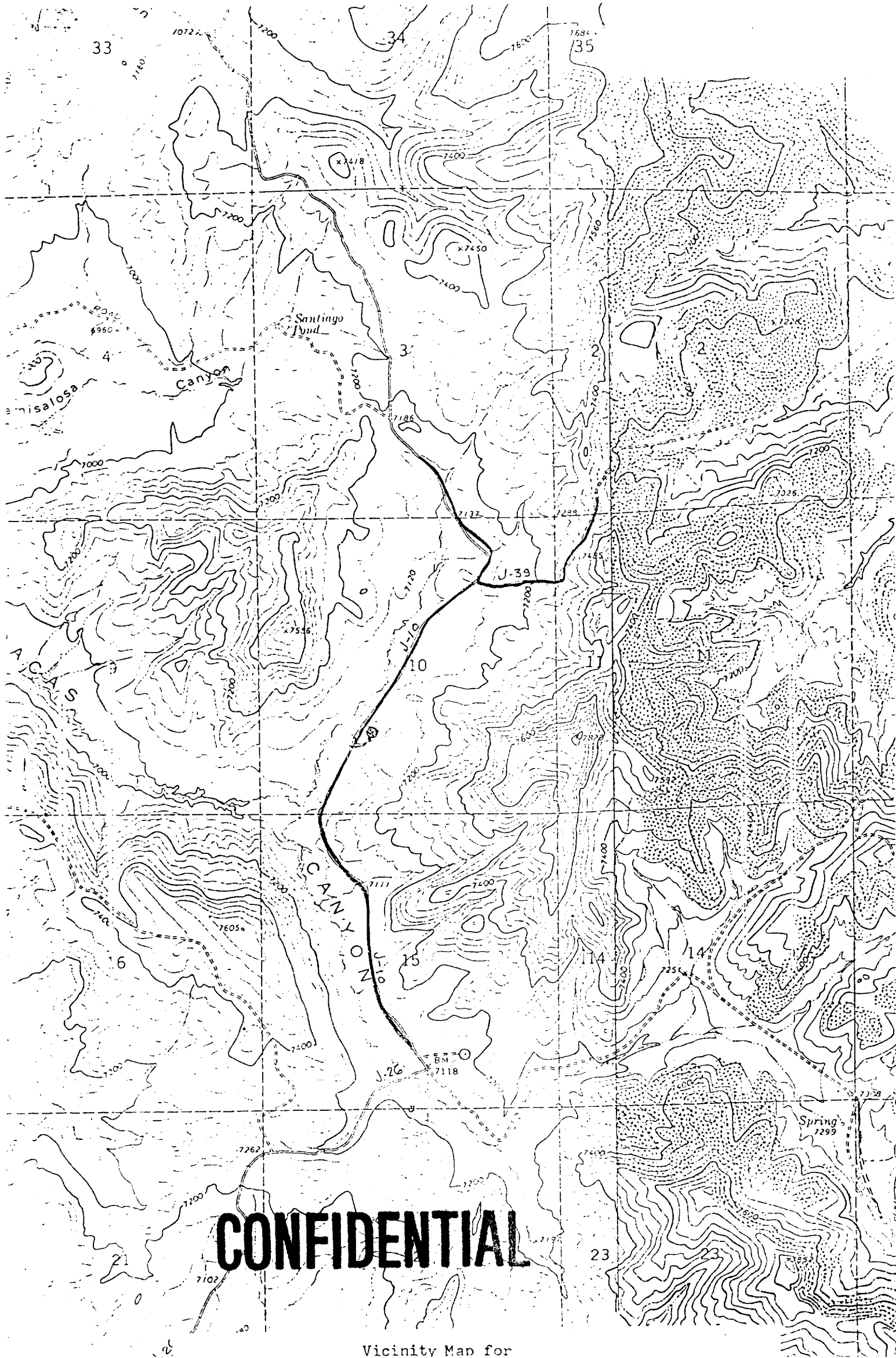
September 9, 1985

Registered Professional Engineer and Land Surveyor

*Fred B. Kerr Jr.*  
Fred B. Kerr Jr.

Certificate No. 4222 P.  
2050

Scale: 1"=1000'



Vicinity Map for