

UNITED STATES  
DEPARTMENT OF THE INTERIOR  
BUREAU OF LAND MANAGEMENT

APPLICATION FOR PERMIT TO DRILL, DEEPEN, OR PLUG BACK

1a. TYPE OF WORK  
DRILL ☒ DEEPEN ☐ PLUG BACK ☐

b. TYPE OF WELL  
OIL WELL ☐ GAS WELL ☒ OTHER ☐ SINGLE ZONE ☒ MULTIPLE ZONE ☐

2. NAME OF OPERATOR  
Northwest Pipeline Corporation

3. ADDRESS OF OPERATOR  
3539 E. 30th Street - Farmington, NM 87401

4. LOCATION OF WELL (Report location clearly and in accordance with any State requirements.)\*  
At surface 840' FSL & 1340' FWL SE/4 SW/4  
At proposed prod. zone Same

14. DISTANCE IN MILES AND DIRECTION FROM NEAREST TOWN OR POST OFFICE\*  
Approximately 20 miles to Gobernador

15. DISTANCE FROM PROPOSED\* LOCATION TO NEAREST PROPERTY OR LEASE LINE, FT. (Also to nearest drlg. unit line, if any) 840'

16. NO. OF ACRES IN LEASE N/A 2560

17. NO. OF ACRES ASSIGNED TO THIS WELL 320

18. DISTANCE FROM PROPOSED LOCATION\* TO NEAREST WELL, DRILLING, COMPLETED, OR APPLIED FOR, ON THIS LEASE, FT. + 3500'

19. PROPOSED DEPTH 3270'

20. ROTARY OR CABLE TOOLS Rotary

21. ELEVATIONS (Show whether DF, RT, GR, etc.) 6400' GR

22. APPROX. DATE WORK WILL START\* 3-1-89

23. DRILLING OPERATIONS AUTHORIZED ARE SUBJECT TO COMPLIANCE WITH ATTACHED "GENERAL REQUIREMENTS" PROPOSED CASING AND CEMENTING PROGRAM

5. LEASE DESIGNATION AND SERIAL NO.  
SF-078771

6. IF INDIAN, ALLOTTEE OR TRIBE NAME

7. UNIT AGREEMENT NAME  
Rosa Unit

8. FARM OR LEASE NAME  
Rosa Unit

9. WELL NO.  
#215

10. FIELD AND POOL, OR WILDCAT  
Basin Fruitland Pool

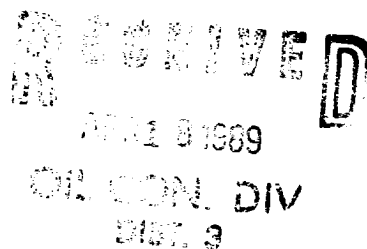
11. SEC., T., R., M., OR BLK. AND SURVEY OR AREA  
N Sec. 26, T31N, R6W

12. COUNTY OR PARISH  
Rio Arriba

13. STATE  
New Mexico

SIZE OF HOLE	SIZE OF CASING	WEIGHT PER FOOT	SETTING DEPTH	
12-1/4"	9-5/8"	32#	200'	125 cu. ft.
8-3/4"	7"	20#	3080'	150 cu. ft.
6-1/4"	5-1/2"	23#	3270'	Open hole completion

The W/2 of Section 26 is dedicated to this well.



IN ABOVE SPACE DESCRIBE PROPOSED PROGRAM: If proposal is to deepen or plug back, give data on present productive zone and proposed new productive zone. If proposal is to drill or deepen directionally, give pertinent data on subsurface locations and measured and true vertical depths. Give blowout preventer program, if any.

24. SIGNED Mike Turnbaugh TITLE Senior Engineer DATE 12-19-88  
(This space for Federal or State office use)

PERMIT NO. \_\_\_\_\_ APPROVAL DATE \_\_\_\_\_

APPROVED BY \_\_\_\_\_ TITLE \_\_\_\_\_ DATE \_\_\_\_\_

CONDITIONS OF APPROVAL, IF ANY:

ch-1

\*See Instructions On Reverse Side

Title 18 U.S.C. Section 1001, makes it a crime for any person knowingly and willfully to make to any department or agency of the United States any false, fictitious or fraudulent statements or representations as to any matter within its jurisdiction.

NMOCC

APPROVED  
AS AMENDED  
APR 13 1989  
[Signature]

## OIL CONSERVATION DIVISION

STATE OF NEW MEXICO  
ENERGY AND MINERALS DEPARTMENTP. O. BOX 2088  
SANTA FE, NEW MEXICO 87501Form C-102  
Revised 10-1-78

All distances must be from the outer boundaries of the Section.

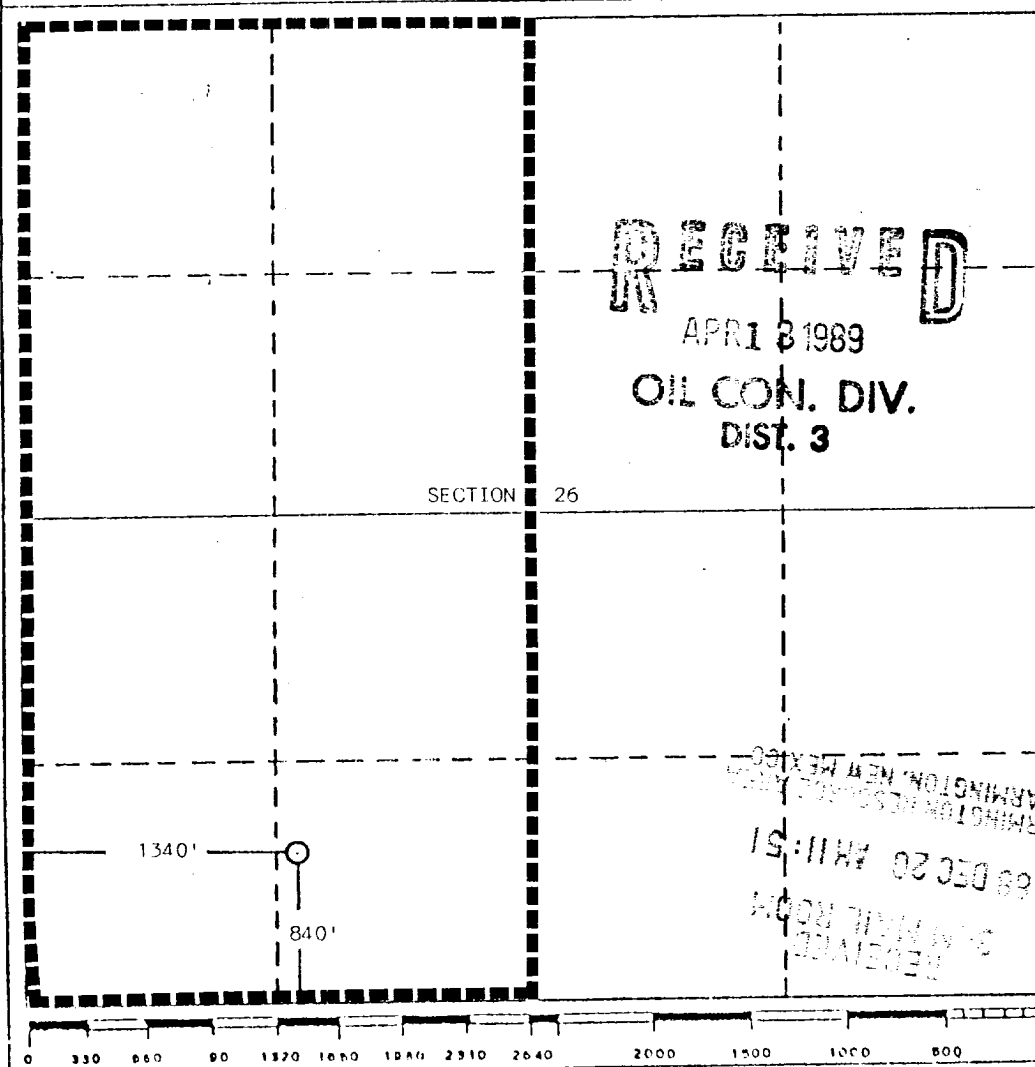
Operator Northwest Pipeline Corporation		Lease Rosa Unit		Well No. 215
Unit Letter N	Section 26	Township 31 North	Range 6 West	County Rio Arriba
Actual Footage Location of Well: 840 feet from the South line and 1340 feet from the West line				
Ground Level Elev. 6400	Producing Formation Fruitland	Pool Basin Fruitland Pool	Dedicated Acreage: 320 Acres	

1. Outline the acreage dedicated to the subject well by colored pencil or hatchure marks on the plat below.
2. If more than one lease is dedicated to the well, outline each and identify the ownership thereof (both as to working interest and royalty).
3. If more than one lease of different ownership is dedicated to the well, have the interests of all owners been consolidated by communitization, unitization, force-pooling, etc?

☒ Yes ☐ No If answer is "yes," type of consolidation unitization

If answer is "no," list the owners and tract descriptions which have actually been consolidated. (Use reverse side of this form if necessary.)

No allowable will be assigned to the well until all interests have been consolidated (by communitization, unitization, forced-pooling, or otherwise) or until a non-standard unit, eliminating such interests, has been approved by the Division.



## CERTIFICATION

I hereby certify that the information contained herein is true and complete to the best of my knowledge and belief.

*Mike J. Turnbaugh*  
Name  
Mike Turnbaugh

Position  
Senior Engineer

Company  
Northwest Pipeline Corp.

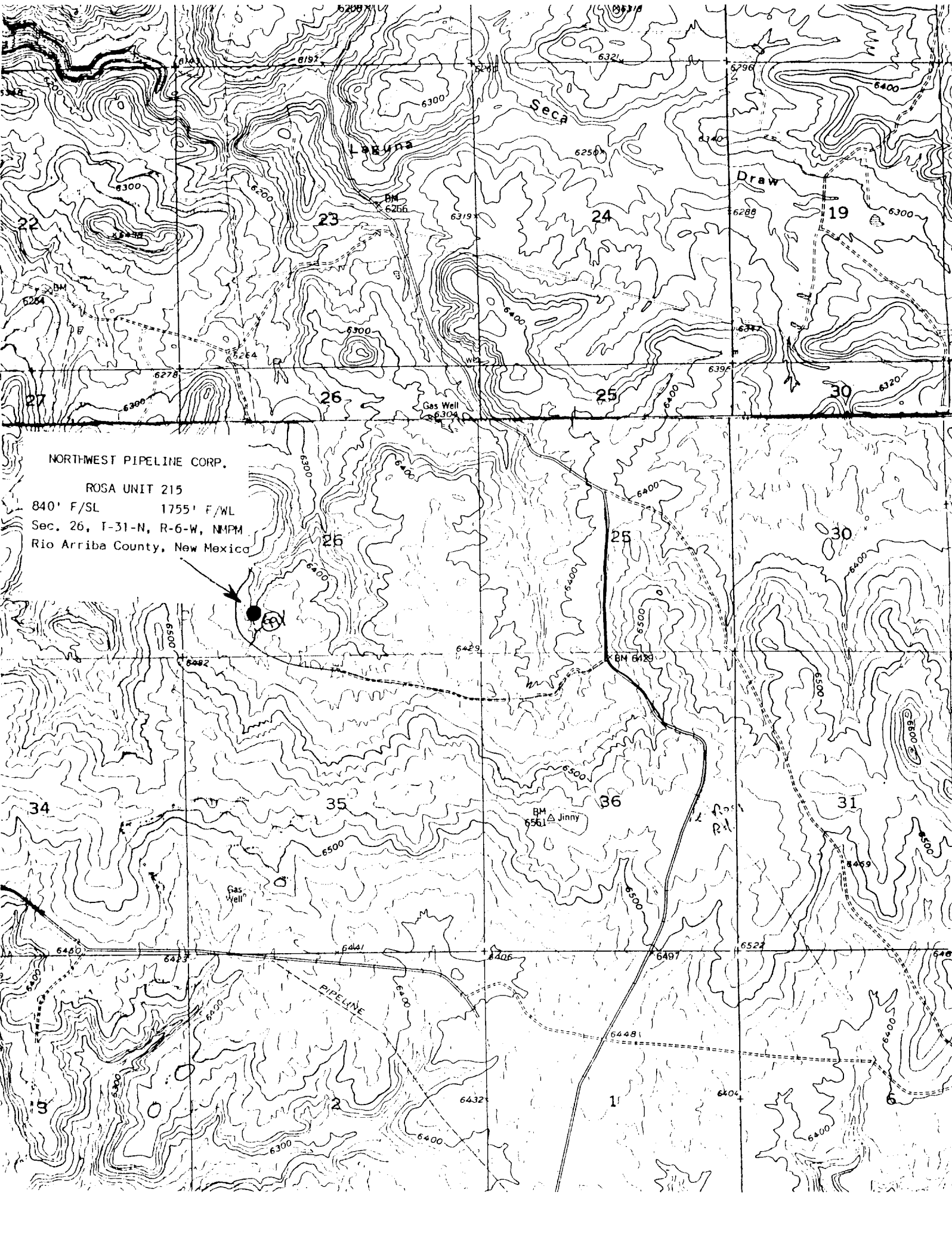
Date  
11-4-88

I hereby certify that the location shown on this plat was plotted from field notes of actual surveys made by me or under my supervision, and that the same is true and correct to the best of my knowledge and belief.

Date Surveyed  
October 10, 1988

Registered Professional Engineer  
and/or Land Surveyor

Certificate No. 5979  
Edgar L. Risenbrey, L.S.



NORTHWEST PIPELINE CORP.

ROSA UNIT 215

840' F/SL 1755' F/WL

Sec. 26, T-31-N, R-6-W, N4PM

Rio Arriba County, New Mexico