

SLM  
DB

STATE OF NEW MEXICO

ENERGY, MINERALS AND NATURAL RESOURCES DEPARTMENT

OIL CONSERVATION DIVISION

OK  
C

GARREY CARRUTHERS  
GOVERNOR

July 25, 1989

POST OFFICE BOX 2088  
STATE LAND OFFICE BUILDING  
SANTA FE, NEW MEXICO 87504  
(505) 827-5800

Northwest Pipeline Corporation  
3539 East 30th Street  
Farmington, NM 87401

Attention: Mike Turnbaugh  
Senior Engineer

Administrative Order NSP-1577

Dear Mr. Turnbaugh:

Reference is made to your application of December 6, 1988 and February 20, 1989 for a 232.89-acre, more or less, non-standard gas proration unit consisting of the following acreage in the Basin-Fruitland Coal (Gas) Pool:

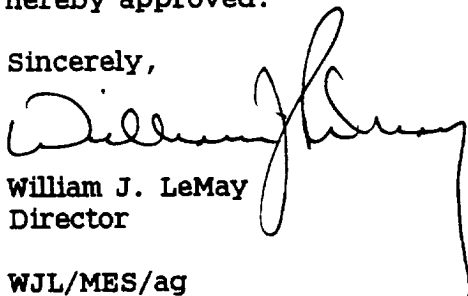
**RIO ARRIBA COUNTY, NEW MEXICO**

~~Basin-Fruitland Coal (Gas) Pool, NMPM~~  
Lots 1 and 2 and the NE/4

It is my understanding that this unit is to be dedicated to your Rosa Unit Well No. 230 to be drilled at a standard coal gas well location 1410 feet from the North line and 1365 feet from the East line (Unit G) of Section 31.

By authority granted me under the provisions of Rule 6 of the Special Rules and Regulations for the Basin-Fruitland Coal (Gas) Pool, as promulgated by Division Order No. R-8768, the above non-standard gas proration unit is hereby approved.

Sincerely,

  
William J. LeMay  
Director

WJL/MES/ag

cc: **Oil Conservation Division - Aztec**  
NM Oil and Gas Engineering Committee - Hobbs  
US Bureau of Land Management - Farmington

**RECEIVED**

JUL 27 1989

**OIL CON. DIV.**  
**DIST. 3**



STATE OF NEW MEXICO  
ENERGY AND MINERALS DEPARTMENT  
OIL CONSERVATION DIVISION  
AZTEC DISTRICT OFFICE

GARREY CARRUTHERS  
GOVERNOR

1000 RIO BRAZOS ROAD  
AZTEC, NEW MEXICO 87410  
(505) 334-6178

Date: 7-18-89

Oil Conservation Division  
P.O. Box 2088  
Santa Fe, NM 87504-2088

Re: Proposed MC \_\_\_\_\_  
Proposed DHC \_\_\_\_\_  
Proposed NSL ~~\_\_\_\_\_~~ \_\_\_\_\_  
Proposed SWD \_\_\_\_\_  
Proposed WFX \_\_\_\_\_  
Proposed PMX \_\_\_\_\_

Gentlemen:

*NSP &*

I have examined the application dated 7-18-89  
for the Northwest Pipeline Corp. Rose Unit #230  
Operator Lease & Well No.

G-31-31N-5W and my recommendations are as follows:  
Unit, S-T-R

Approve  
\_\_\_\_\_  
\_\_\_\_\_  
\_\_\_\_\_  
\_\_\_\_\_

Yours truly,

*E. Bruch*

NORTHWEST PIPELINE CORPORATION

PRODUCTION & DRILLING  
3539 East 30th Street  
Farmington, New Mexico 87401  
4320-PD-034-89

February 9, 1989

NMOCC  
Michael Stogner  
310 Old Santa Fe Trail  
Room #206  
Santa Fe, NM 87503

Re: Non-Standard Proration Unit  
Rosa Unit #230

RECEIVED  
JUL 18 1989  
OIL CON. DIV  
DIST. 3

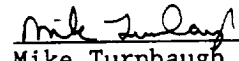
Dear Mr. Stogner:

I have reviewed the subject well again and since Northwest Pipeline operates the entire Rosa Unit as well as both the San Juan 30-5 Unit to the south and the 31-6 Unit to the west and southwest, I don't believe any offset operators exist that might need notification.

If your records indicate something other than this please let me know and I will be able to notify them.

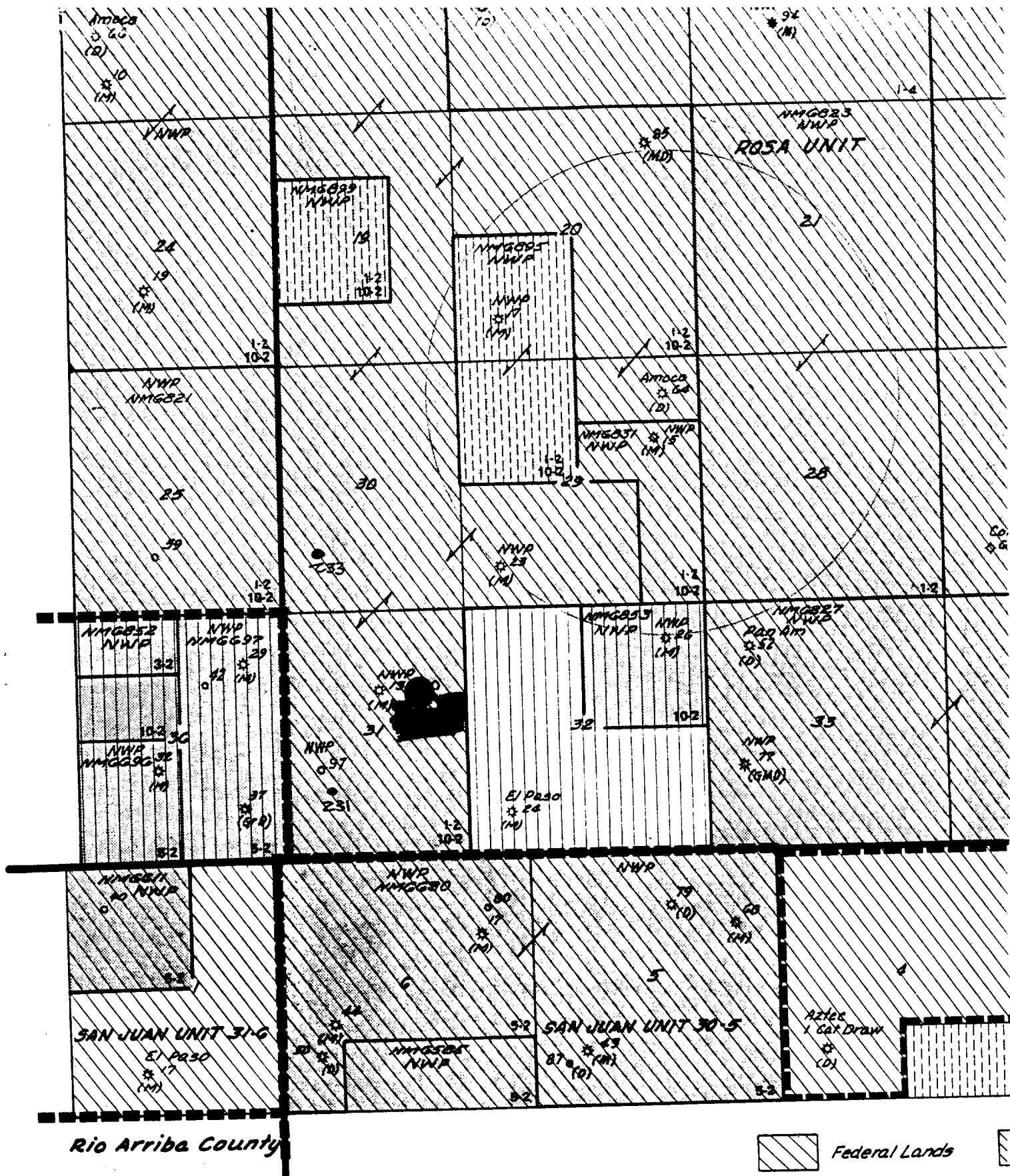
As you can see, there is a considerable amount of paper in a Federal APD package. Please discard those forms, etc. which are of no use to you.

Sincerely,

  
Mike Turnbaugh  
Senior Engineer

MJT/ch

RECEIVED  
FEB 20 1989  
OIL CONSERVATION DIVISION  
SANTA FE



**Rio Arriba County**

 *Federal Lands*

State Lands

 Northwest

NEW MEXICO OIL CONSERVATION COMMISSION  
WELL LOCATION AND ACREAGE DEDICATION PLAT

Form C-102  
Supersedes C-128  
Effective 1-1-65

All distances must be from the outer boundaries of the Section.

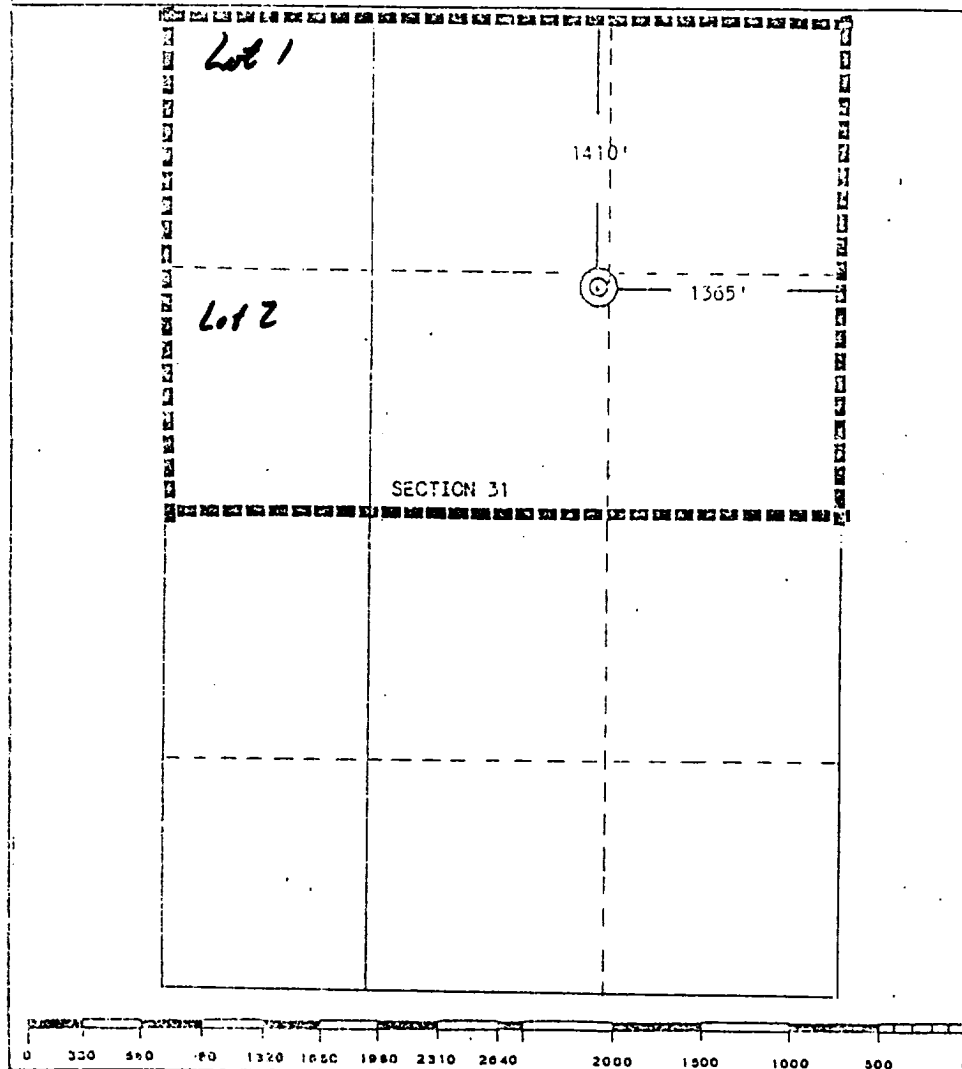
Operator Northwest Pipeline Corporation			Lease Rosa Unit			Well No. 230		
Unit Letter G	Section 31	Township 31 North		Range 5 West	County Rio Arriba			
Actual Ecology Location of Well:								
1410 feet from the North line and		1365 feet from the East line						
Ground Level Elev. 6509	Producing Formation Fruitland		Pool Basin Fruitland Pool			Dedicated Acreage: 232.89 Acres		

1. Outline the acreage dedicated to the subject well by colored pencil or hatchure marks on the plat below.
2. If more than one lease is dedicated to the well, outline each and identify the ownership thereof (both as to working interest and royalty).
3. If more than one lease of different ownership is dedicated to the well, have the interests of all owners been consolidated by communitization, unitization, force-pooling, etc?

☒ Yes ☐ No If answer is "yes," type of consolidation unitization

If answer is "no," list the owners and tract descriptions which have actually been consolidated. (Use reverse side of this form if necessary.)

No allowable will be assigned to the well until all interests have been consolidated (by communitization, unitization, forced-pooling, or otherwise) or until a non-standard unit, eliminating such interests, has been approved by the Commission.



CERTIFICATION

I hereby certify that the information contained herein is true and complete to the best of my knowledge and belief.

*Mike Turnbaugh*

Name  
Mike Turnbaugh  
Position  
Senior Engineer  
Company  
Northwest Pipeline Corp.  
Date  
10-21-88

I hereby certify that the information shown on this plat was prepared in the field notes of actual survey made by me or under my supervision, and that the same is true and correct to the best of my knowledge and belief.

Date Surveyed  
September 21, 1988

Registered Professional Engineer  
and/or Land Surveyor

*Edgar L. Risenhoover*

Certificate No. 5979

Edgar L. Risenhoover, L.S.

COMEZ RANCH QUADRANGLE  
NEW MEXICO-RIO ARriba CO.  
75 MINUTE SERIES (TOPOGRAPHIC)

4537 IV NE  
BANCOS MESA

