

UNITED STATES  
DEPARTMENT OF THE INTERIOR  
BUREAU OF LAND MANAGEMENT

APPLICATION FOR PERMIT TO DRILL, DEEPEN, OR PLUG BACK

1a. TYPE OF WORK

DRILL ☒

DEEPEN ☐

PLUG BACK ☐

b. TYPE OF WELL

OIL  
WELL ☐

GAS  
WELL ☒

OTHER

SINGLE  
ZONE ☒

MULTIPLE  
ZONE ☐

2. NAME OF OPERATOR

Northwest Pipeline Corporation

3. ADDRESS OF OPERATOR

3539 E. 30th Street - Farmington, NM 87401

4. LOCATION OF WELL (Report location clearly and in accordance with any State requirements.)\*

At surface

1500' FSL & 1705' FWL NE/4 SW/4

At proposed prod. zone

Same

14. DISTANCE IN MILES AND DIRECTION FROM NEAREST TOWN OR POST OFFICE\*

Approximately 20 miles to Gobernador

15. DISTANCE FROM PROPOSED\*

LOCATION TO NEAREST  
PROPERTY OR LEASE LINE, FT.  
(Also to nearest drlg. unit line, if any)

1500'

18. DISTANCE FROM PROPOSED LOCATION\*  
TO NEAREST WELL, DRILLING, COMPLETED,  
OR APPLIED FOR, ON THIS LEASE, FT.

+ 3000'

16. NO. OF ACRES IN LEASE

N/A 2560

19. PROPOSED DEPTH

3072'

17. NO. OF ACRES ASSIGNED  
TO THIS WELL

320

20. ROTARY OR CABLE TOOLS

Rotary

21. ELEVATIONS (Show whether DF, RT, GR, etc.)

6273' GR

DRILLING OPERATIONS AUTHORIZED ARE  
SUBJECT TO COMPLIANCE WITH ATTACHED

PROPOSED GENERAL REQUIREMENTS, TESTING PROGRAM

22. APPROX. DATE WORK WILL START\*

3-1-89

This action is subject to technical and  
procedural review pursuant to 43 CFR 3165.3  
and appeal pursuant to 43 CFR 3165.4.

SIZE OF HOLE	SIZE OF CASING	WEIGHT PER FOOT	SETTING DEPTH	
12-1/4"	9-5/8"	32#	200'	125 cu. ft.
8-3/4"	7"	20#	2903'	150 cu. ft.
6-1/4"	5-1/2"	23#	3072'	Open hole completion

The W/2 of section 11 is dedicated to this well.

RECEIVED  
BLM MAIL ROOM

69 DEC 20 AM 11:50

FARMINGTON RESOURCE AREA  
FARMINGTON, NEW MEXICO

RECEIVED  
MAY 15 1989  
OIL CON. DIV.  
DIST. 3

IN ABOVE SPACE DESCRIBE PROPOSED PROGRAM: If proposal is to deepen or plug back, give data on present productive zone and proposed new productive zone. If proposal is to drill or deepen directionally, give pertinent data on subsurface locations and measured and true vertical depths. Give blowout preventer program, if any.

24.

SIGNED

Mike Turnbaugh

TITLE

Senior Engineer

DATE

12-19-88

(This space for Federal or State office use)

PERMIT NO.

APPROVAL DATE

APPROVED  
AS AMENDED

MAY 09 1989

Joel Farrell

FOR AREA MANAGER

APPROVED BY

TITLE

CONDITIONS OF APPROVAL, IF ANY:

ch-1

\*See Instructions On Reverse Side

Title 18 U.S.C. Section 1001, makes it a crime for any person knowingly and willfully to make to any department or agency of the United States any false, fictitious or fraudulent statements or representations as to any matter within its jurisdiction.

NMCC

All distances must be from the outer boundaries of the Section.

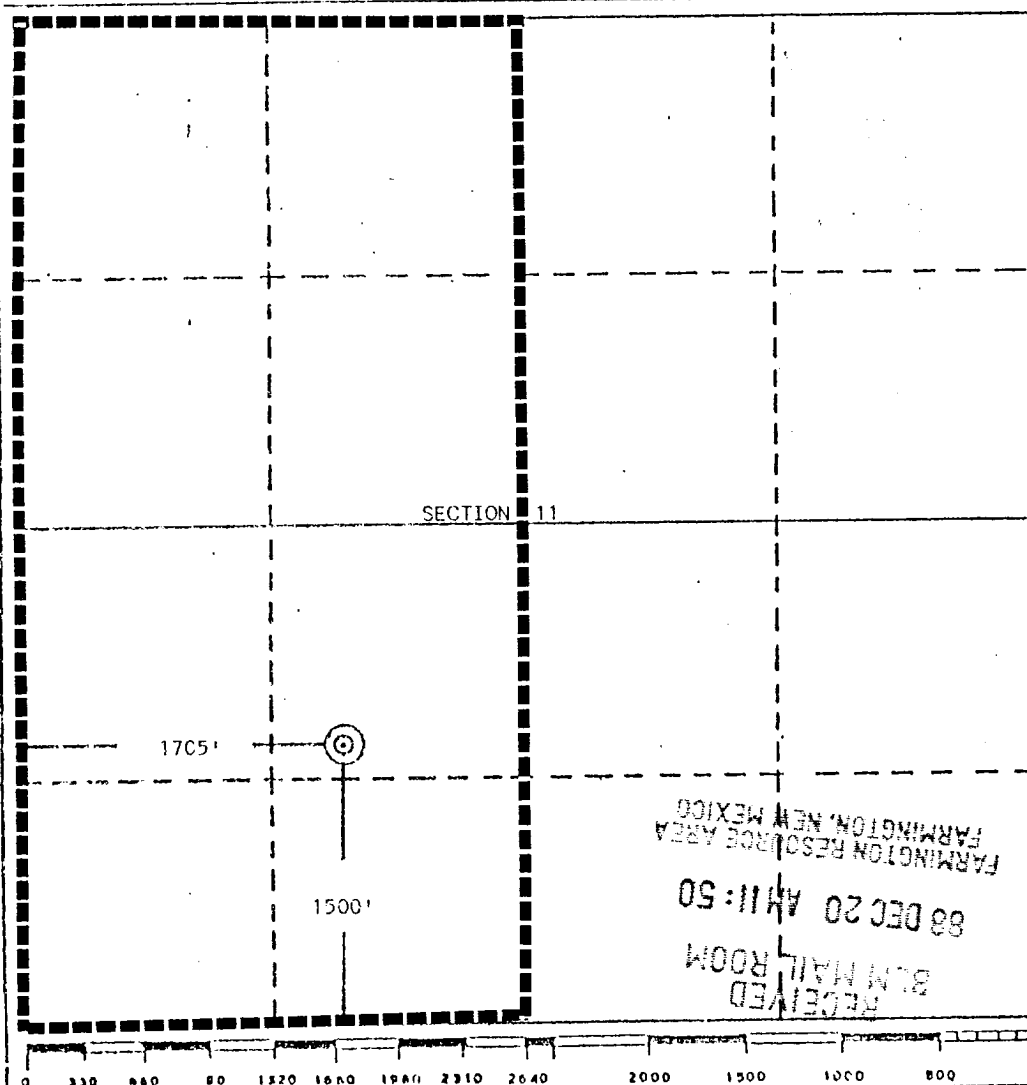
Operator Northwest Pipeline Corporation			Lease Rosa Unit		Well No. 216
Unit Letter K	Section 11	Township 31 North	Range 6 West	County Rio Arriba	
Actual Footage Location of Well: 1500 feet from the South line and 1705 feet from the West line					
Ground Level Elev. 6273	Producing Formation Fruitland		Pool Basin Fruitland Pool		Dedicated Acreage 320 Acres

1. Outline the acreage dedicated to the subject well by colored pencil or hatchure marks on the plat below.
2. If more than one lease is dedicated to the well, outline each and identify the ownership thereof (both as to working interest and royalty).
3. If more than one lease of different ownership is dedicated to the well, have the interests of all owners been consolidated by communitization, unitization, force-pooling, etc?

☒ Yes ☐ No If answer is "yes," type of consolidation unitization

If answer is "no," list the owners and tract descriptions which have actually been consolidated. (Use reverse side of this form if necessary.)

No allowable will be assigned to the well until all interests have been consolidated (by communitization, unitization, forced-pooling, or otherwise) or until a non-standard unit, eliminating such interests, has been approved by the Division.



## CERTIFICATION

I hereby certify that the information contained herein is true and complete to the best of my knowledge and belief.

*Mike Turnbaugh*

Name

Mike Turnbaugh

Position

Senior Engineer

Company

Northwest Pipeline Corp.

Date

10-21-88

I hereby certify that the location shown on this plat was plotted from field notes of actual survey made by me or under my supervision, and that the same is true and correct to the best of my knowledge and belief.

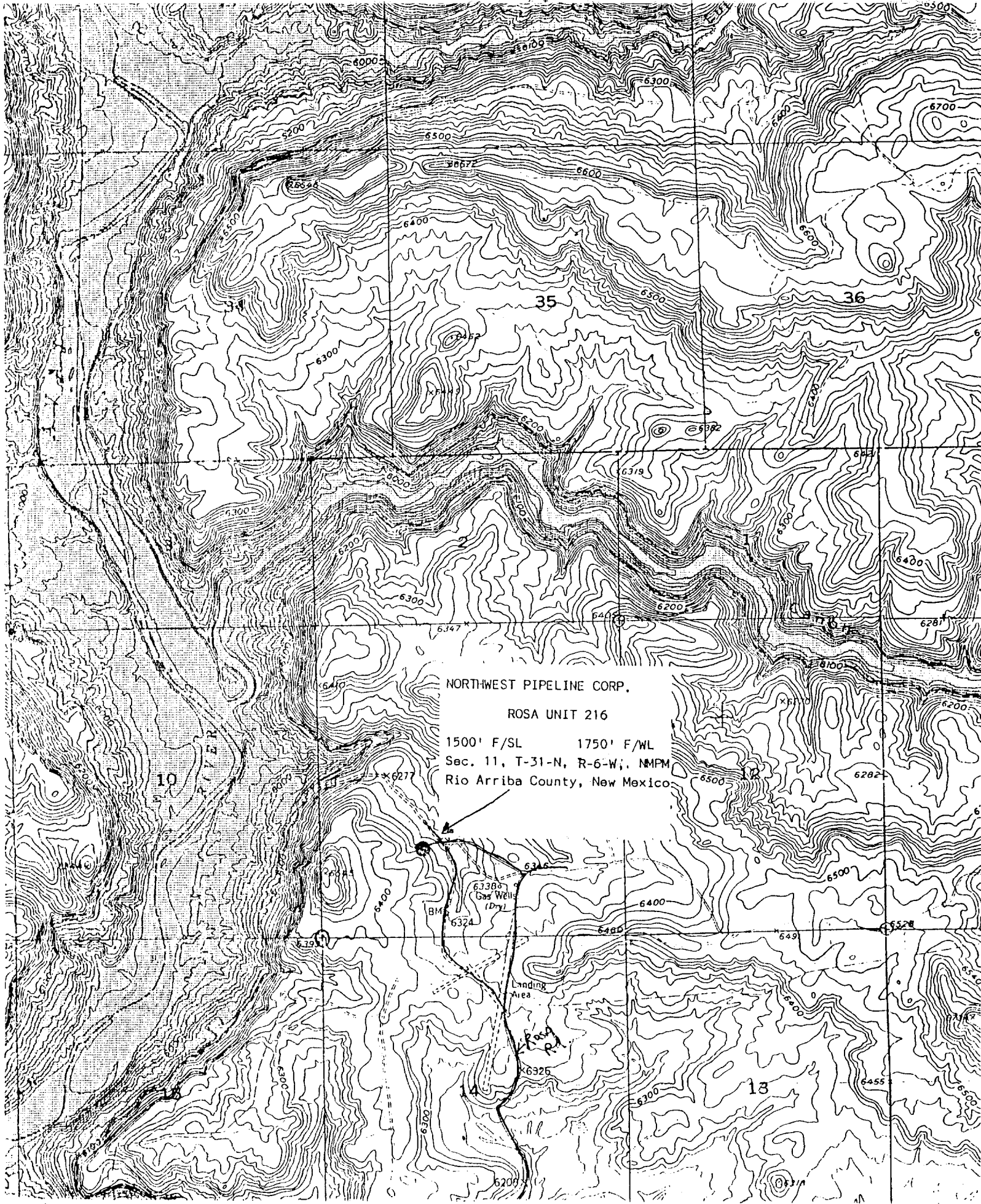
Date Surveyed

September 13, 1988

Registered Professional Engineer  
and/or Land Surveyor*Edgar L. Risenhoover*

Certificate No. 5979

Edgar L. Risenhoover, L.S.



NORTHWEST PIPELINE CORP.

ROSA UNIT 216

1500' F/SL      1750' F/WL  
Sec. 11, T-31-N, R-6-W; NMPM  
Rio Arriba County, New Mexico

Landing Area

Rosa  
RA