

UNITED STATES
DEPARTMENT OF THE INTERIOR
BUREAU OF LAND MANAGEMENT

APPLICATION FOR PERMIT TO DRILL, DEEPEN, OR PLUG BACK

1a. TYPE OF WORK

DRILL ☒

DEEPEN ☐

PLUG BACK ☐

b. TYPE OF WELL

OIL
WELL ☐

GAS
WELL ☒

OTHER

SINGLE
ZONE ☒

MULTIPLE
ZONE ☐

2. NAME OF OPERATOR

Northwest Pipeline Corporation

3. ADDRESS OF OPERATOR

3539 E. 30th Street - Farmington, NM 87401

4. LOCATION OF WELL (Report location clearly and in accordance with any State requirements.)

At surface

990' FNL & 990' FEL NW/4 NE/4

At proposed prod. zone

Same

14. DISTANCE IN MILES AND DIRECTION FROM NEAREST TOWN OR POST OFFICE*

Approximately 20 miles to Gobernador

10. DISTANCE FROM PROPOSED*

LOCATION TO NEAREST
PROPERTY OR LEASE LINE, FT.
(Also to nearest drig. unit line, if any)

990'

18. DISTANCE FROM PROPOSED LOCATION*
TO NEAREST WELL, DRILLING, COMPLETED,
OR APPLIED FOR, ON THIS LEASE, FT.

+

2500'

16. NO. OF ACRES IN LEASE

N/A 2518.04

19. PROPOSED DEPTH

3327'

17. NO. OF ACRES ASSIGNED
TO THIS WELL

271.54

20. ROTARY OR CABLE TOOLS

Rotary

21. ELEVATIONS (Show whether DF, RT, GR, etc.)

6465' GR

DRILLING OPERATIONS AUTHORIZED ARE
SUBJECT TO COMPLIANCE WITH ATTACHED

"GENERAL REQUIREMENTS"
PROPOSED CASING AND CEMENTING PROGRAM

22. APPROX. DATE WORK WILL START*

3-1-89

This action is subject to technical and
procedural review pursuant to 43 CFR 3165.3
and appeal pursuant to 43 CFR 3165.4.

SIZE OF HOLE	SIZE OF CASING	WEIGHT PER FOOT	SETTING DEPTH	QUANTITY OF CEMENT
12-1/4"	9-5/8"	32.3#	200'	125 cu. ft.
8-3/4"	7"	20#	3169'	155 cu. ft.
6-1/4"	5-1/2"	23#	3327'	Open hole completion

The N/2 of Section 13 is dedicated to this well.

RECEIVED
BLM MAIL ROOM
68 DEC 22 PM 12:58
FARMINGTON RESOURCE AREA
FARMINGTON, NEW MEXICO

RECEIVED
JUL 17 1989
OIL CON. DIV.
DIST. 3

IN ABOVE SPACE DESCRIBE PROPOSED PROGRAM: If proposal is to deepen or plug back, give data on present productive zone and proposed new productive zone. If proposal is to drill or deepen directionally, give pertinent data on subsurface locations and measured and true vertical depths. Give blowout preventer program, if any.

24.

SIGNED

Mike Turnbaugh

TITLE

Senior Engineer

DATE

12-19-88

(This space for Federal or State office use)

PERMIT NO.

APPROVAL DATE

APPROVED BY

TITLE

CONDITIONS OF APPROVAL, IF ANY:

ch-1

OK

*See Instructions On Reverse Side

Title 18 U.S.C. Section 1001, makes it a crime for any person knowingly and willfully to make to any department or agency of the United States any false, fictitious or fraudulent statements or representations as to any matter within its jurisdiction.

APPROVED
AS AMENDED

JUL 12 1989
AREA MANAGER

WELL LOCATION AND ACREAGE DEDICATION PLAT

Supersede 0-120
Effective 1-1-65

All distances must be from the outer boundaries of the Section.

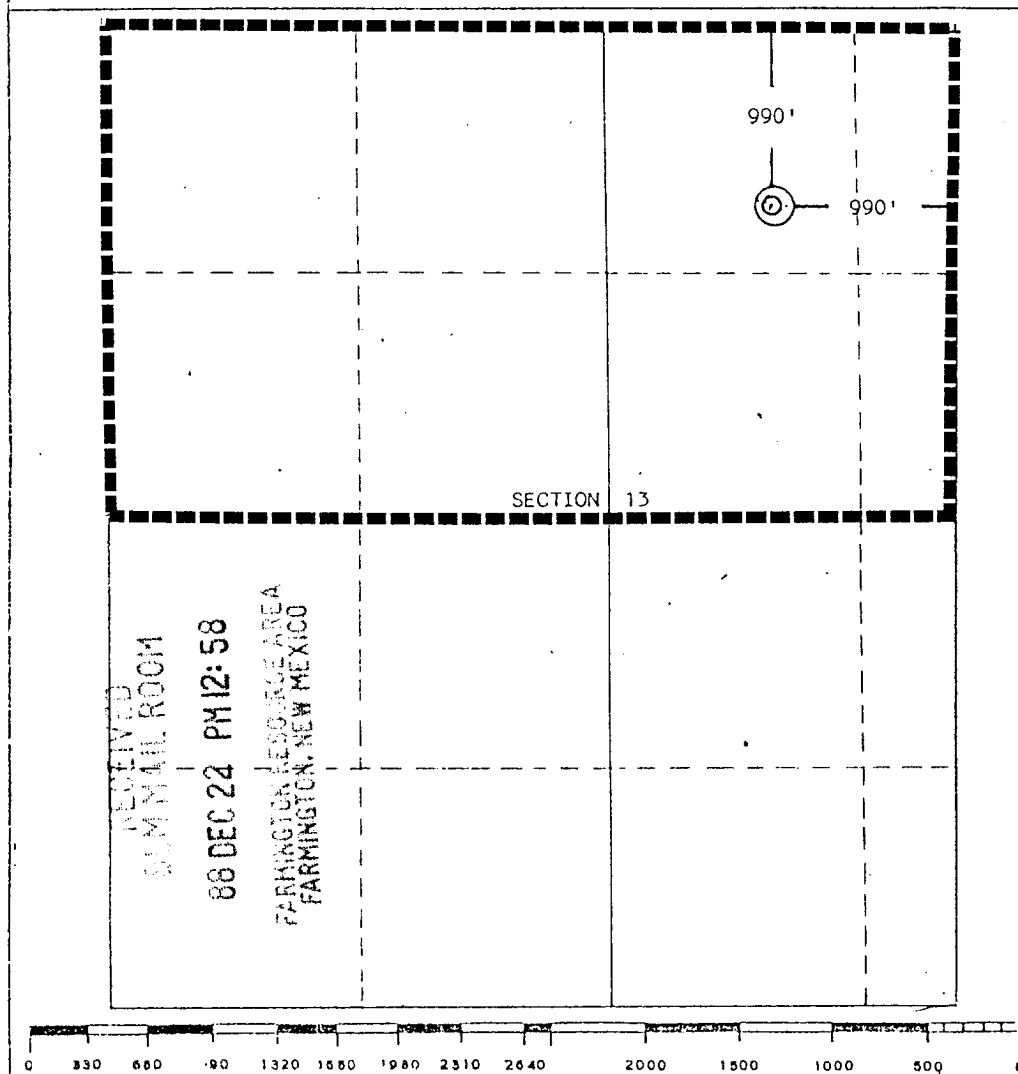
Operator Northwest Pipeline Corporation			Lease Rosa Unit		Well No. 220
Unit Letter B	Section 13	Township 31 North	Range 6 West	County Rio Arriba	
Actual Footage Location of Well: 990 feet from the North line and 990 feet from the East line					
Ground Level Elev. 6465	Producing Formation Fruitland		Pool Basin Fruitland Pool COPL	Dedicated Acreage: 271.54 Acres	

1. Outline the acreage dedicated to the subject well by colored pencil or hachure marks on the plat below.
2. If more than one lease is dedicated to the well, outline each and identify the ownership thereof (both as to working interest and royalty).
3. If more than one lease of different ownership is dedicated to the well, have the interests of all owners been consolidated by communitization, unitization, force-pooling, etc?

☒ Yes ☐ No If answer is "yes," type of consolidation unitization

If answer is "no," list the owners and tract descriptions which have actually been consolidated. (Use reverse side of this form if necessary.) _____

No allowable will be assigned to the well until all interests have been consolidated (by communitization, unitization, forced-pooling, or otherwise) or until a non-standard unit, eliminating such interests, has been approved by the Commission.



CERTIFICATION

I hereby certify that the information contained herein is true and complete to the best of my knowledge and belief.

Mike Turnbaugh
Name
Mike Turnbaugh

Position
Senior Engineer

Company
Northwest Pipeline Corp.

Date
11-1-88

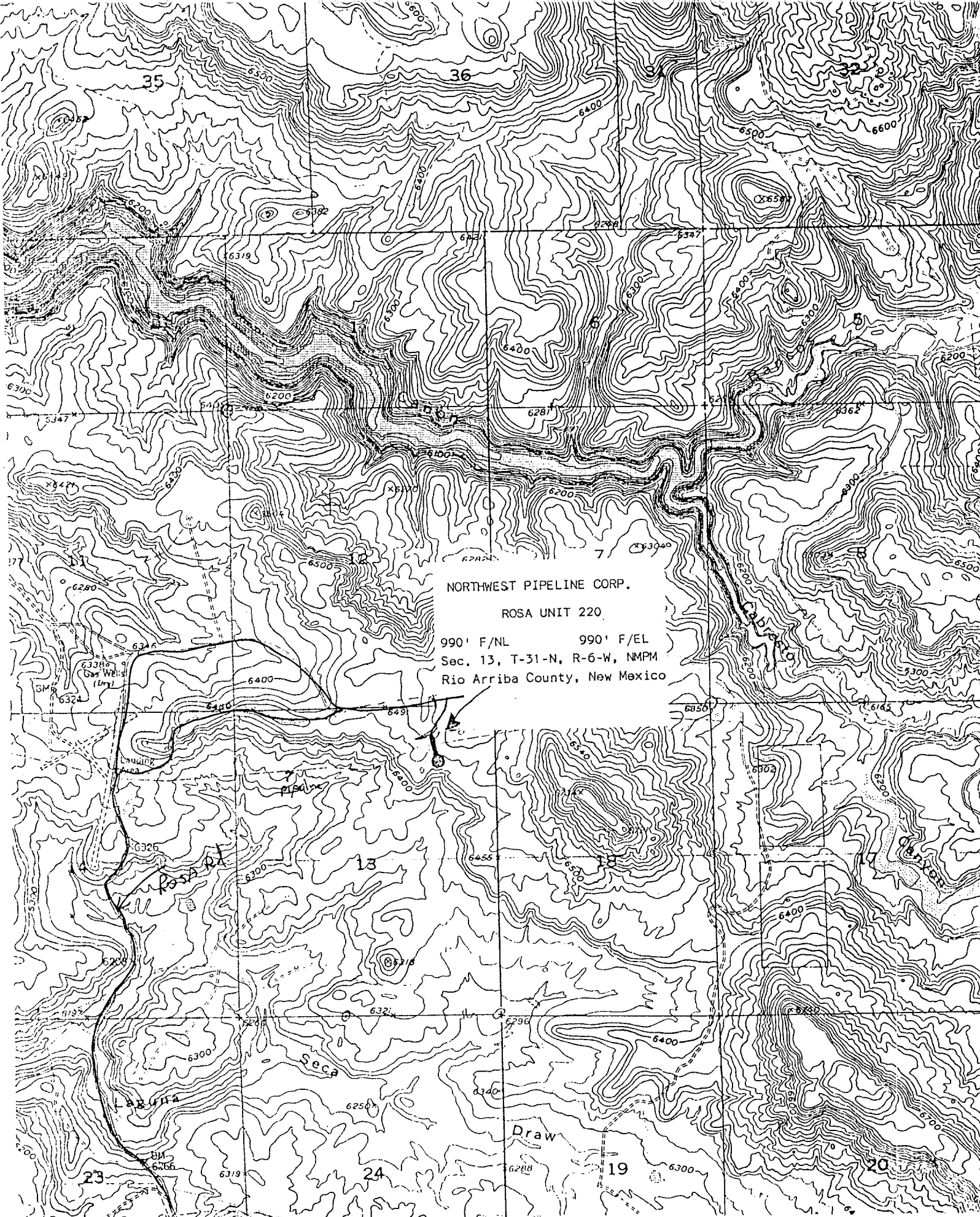
I hereby certify that the information shown on this plat was plotted from field notes of actual surveys made by me or under my supervision, and that the same is true and correct to the best of my knowledge and belief.

EDGAR L. RISENHOOVER
NEW MEXICO
5979
REGISTERED LAND SURVEYOR

Date Surveyed
September 13, 1988

Registered Professional Engineer
and/or Land Surveyor

Edgar L. Risenhoover
Certificate No. 5979
Edgar L. Risenhoover, L.S.



NORTHWEST PIPELINE CORP.

ROSA UNIT 220

990' F/NL 990' F/EL
Sec. 13, T-31-N, R-6-W, NMPM
Rio Arriba County, New Mexico

$$\begin{array}{r}
 1 \\
 15.80 \\
 15.74 \\
 \hline
 31.54 \\
 80.00 \\
 \hline
 111.54 \\
 160.00 \\
 \hline
 271.
 \end{array}$$