

UNITED STATES
DEPARTMENT OF THE INTERIOR
BUREAU OF LAND MANAGEMENT

APPLICATION FOR PERMIT TO DRILL, DEEPEN, OR PLUG BACK

1a. TYPE OF WORK
DRILL ☒ DEEPEN ☐ PLUG BACK ☐

b. TYPE OF WELL
OIL WELL ☐ GAS WELL ☒ OTHER ☐
SINGLE ZONE ☒ MULTIPLE ZONE ☐

2. NAME OF OPERATOR
Northwest Pipeline Corporation

3. ADDRESS OF OPERATOR
3539 E. 30th Street - Farmington, NM 87401

4. LOCATION OF WELL (Report location clearly and in accordance with any State requirements.*)
At surface 1835' FSL & 2005' FWL NE/4 SW/4
At proposed prod. zone
Same

14. DISTANCE IN MILES AND DIRECTION FROM NEAREST TOWN OR POST OFFICE*
Approximately 20 miles to Gobernador

16. NO. OF ACRES IN LEASE
N/A 1835'

18. DISTANCE FROM PROPOSED LOCATION*
TO NEAREST WELL, DRILLING, COMPLETED,
OR APPLIED FOR, ON THIS LEASE, FT.
+ 2500'

21. ELEVATIONS (Show whether DE, RT, GR, etc.)
6435' GR

23. This action is subject to technical and procedural review pursuant to 43 CFR 3160.3 and appeal pursuant to 43 CFR 3160.3.

SIZE OF HOLE	SIZE OF CASING	WEIGHT PER FOOT	SETTING DEPTH
12-1/4"	9-5/8"	32.3#	200'
8-3/4"	7"	20#	3097'
6-1/4"	5-1/2"	23#	3253'

5. LEASE DESIGNATION AND SERIAL NO.
SF-078766
6. IF INDIAN, ALLOTTEE OR TRIBE NAME
7. UNIT AGREEMENT NAME
Rosa Unit
8. FARM OR LEASE NAME
Rosa Unit
9. WELL NO.
#218
10. FIELD AND POOL, OR WILDCAT
Basin Fruitland Pool
11. SEC., T. R., M., OR BLK.
AND SURVEY OR AREA
K Sec. 25, T31N, R6W
12. COUNTY OR PARISH
Rio Arriba
13. STATE
New Mexico

17. NO. OF ACRES ASSIGNED
TO THIS WELL
51 272.32

20. ROTARY OR CABLE TOOLS
Rotary

22. APPROX. DATE WORK WILL START*
3-1-89

DRILLING OPERATIONS AUTHORIZED ARE
SUBJECT TO QUANTITY OF CEMENT ATTACHED
"GENERAL REQUIREMENTS"
125 cu. ft.
150 cu. ft.
Open hole completion

The S/2 of Section 25 is dedicated to this well.

RECEIVED
JUL 19 1989
OIL CON. DIV
DIST. 3

IN ABOVE SPACE DESCRIBE PROPOSED PROGRAM: If proposal is to deepen or plug back, give data on present productive zone and proposed new productive zone. If proposal is to drill or deepen directionally, give pertinent data on subsurface locations and measured and true vertical depths. Give blowout preventer program, if any.

24. SIGNED Mike Turnbaugh TITLE Senior Engineer DATE 12-19-88
(This space for Federal or State office use)

PERMIT NO. APPROVAL DATE

APPROVED BY TITLE

CONDITIONS OF APPROVAL, IF ANY:

ch-1

NMOCC

*See Instructions On Reverse Side

APPROVED
AS AMENDED
MAY 09 1989
AREA MANAGER

All distances must be from the outer boundaries of the Section.

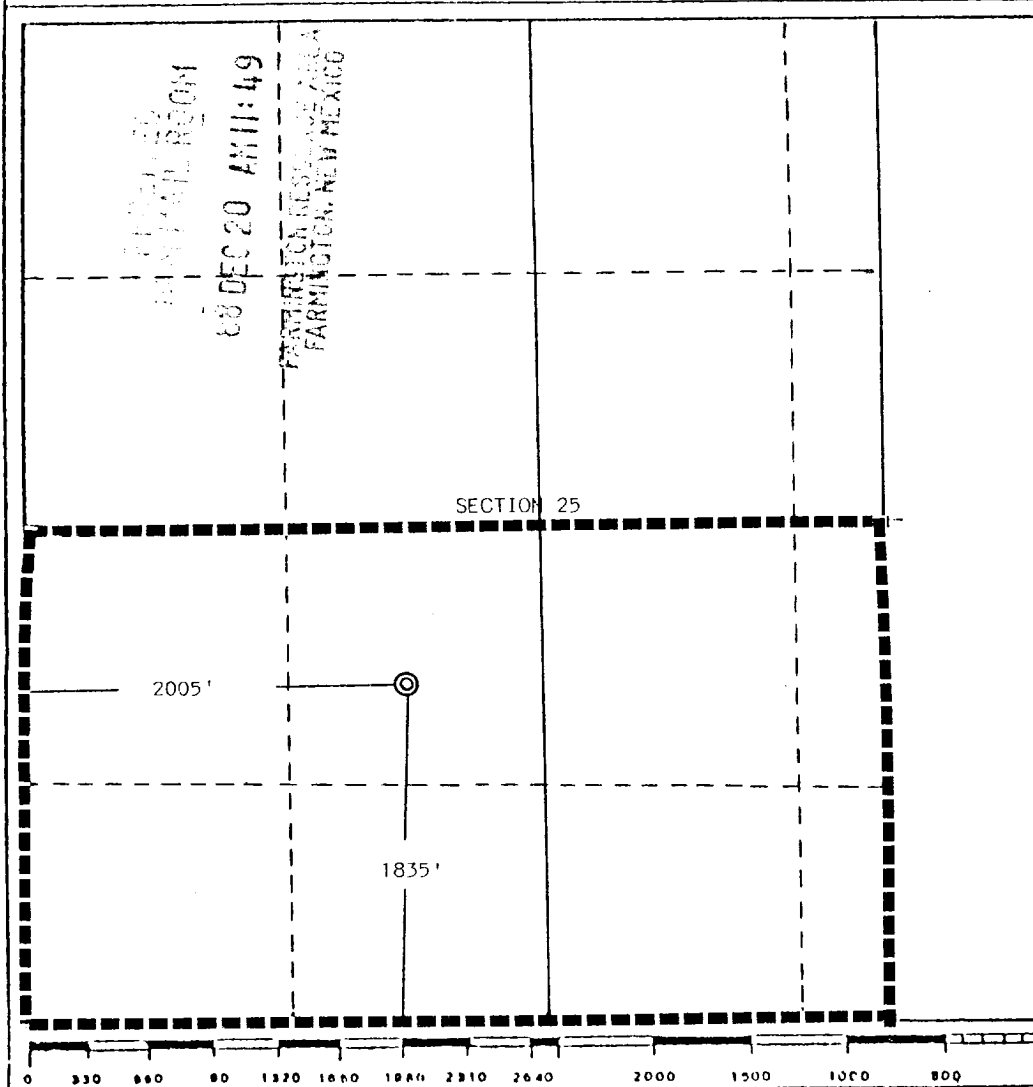
Operator Northwest Pipeline Corporation			Lease Rosa Unit		NOV 10 1988	Well No. 218
Unit Letter K	Section 25	Township 31 North	Range 6 West	County PRODUCTION AND DRILLING		
Actual Footage Location of Well: 1835 feet from the South line and 2005 feet from the West line						
Ground Level Elev. 6435	Producing Formation Fruitland	Pool Basin Fruitland Pool			Dedicated Acreage: 272.32 Acres	

1. Outline the acreage dedicated to the subject well by colored pencil or hachure marks on the plat below.
2. If more than one lease is dedicated to the well, outline each and identify the ownership thereof (both as to working interest and royalty).
3. If more than one lease of different ownership is dedicated to the well, have the interests of all owners been consolidated by communitization, unitization, force-pooling, etc?

☒ Yes ☐ No If answer is "yes," type of consolidation unitization

If answer is "no," list the owners and tract descriptions which have actually been consolidated. (Use reverse side of this form if necessary.)

No allowable will be assigned to the well until all interests have been consolidated (by communitization, unitization, forced-pooling, or otherwise) or until a non-standard unit, eliminating such interests, has been approved by the Division.



CERTIFICATION

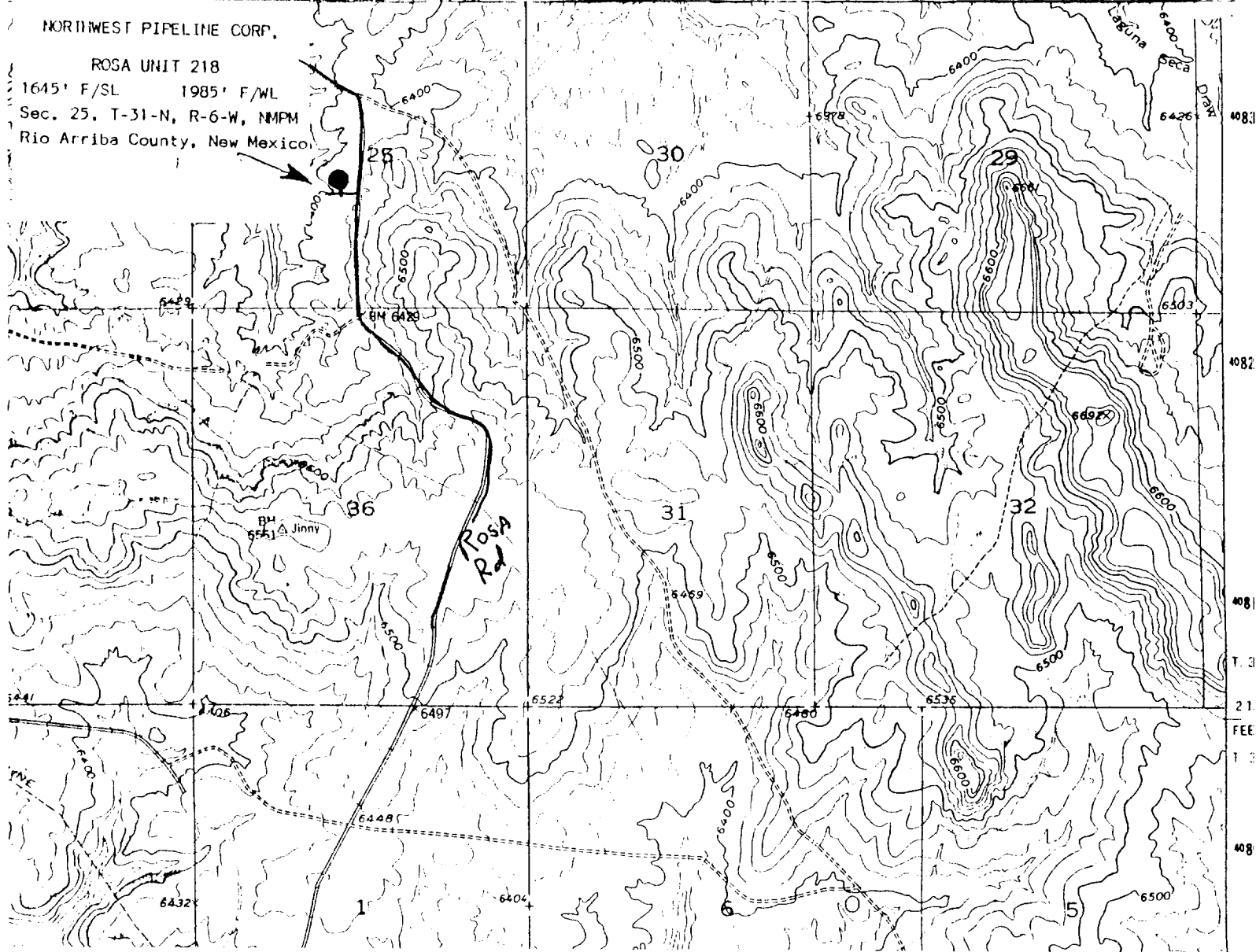
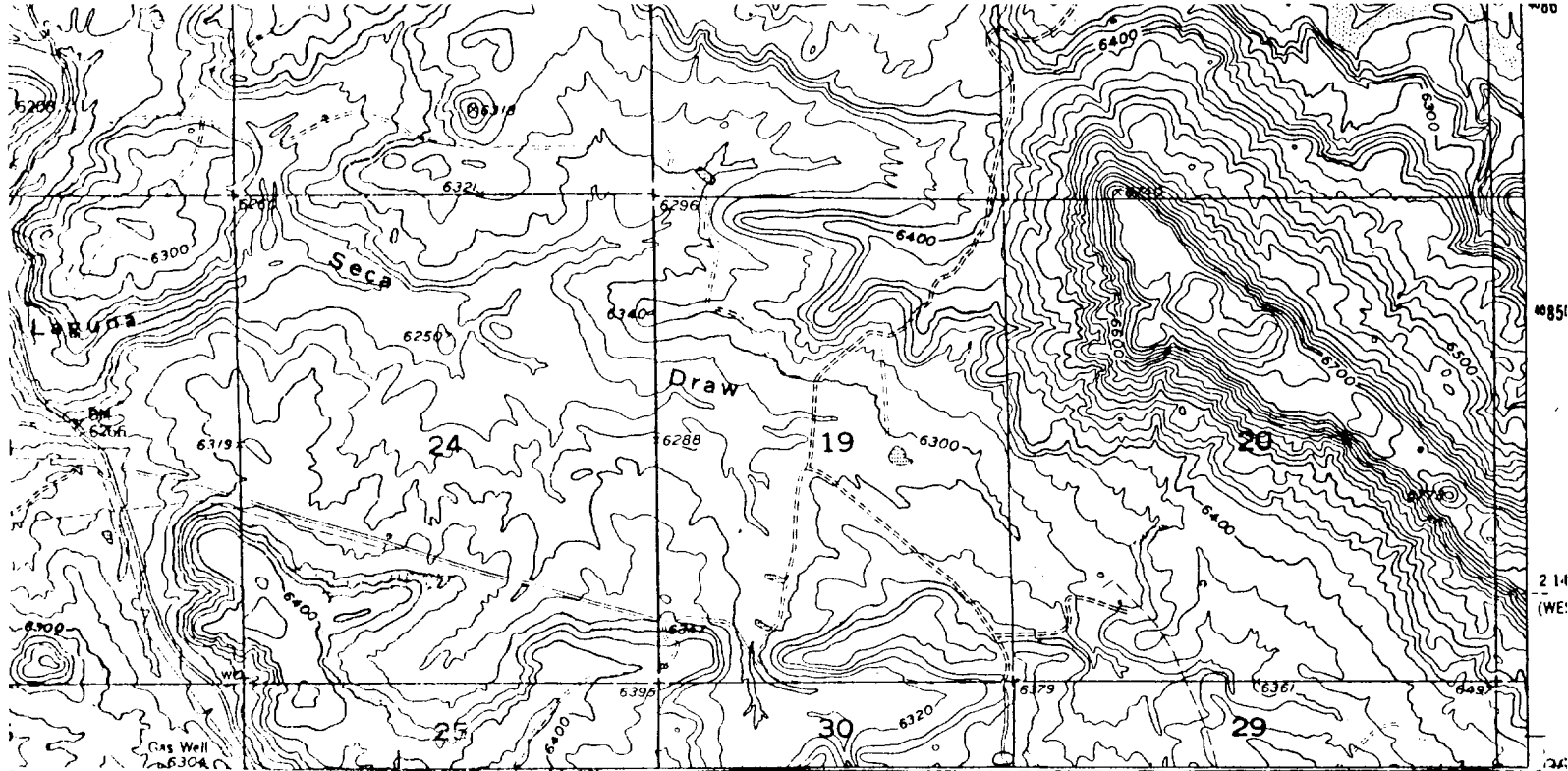
I hereby certify that the information contained herein is true and complete to the best of my knowledge and belief.

Mike Turnbaugh

Name
Mike Turnbaugh
Position
Senior Engineer
Company
Northwest Pipeline Corp.
Date
11-11-88

I hereby certify that the well location shown on this plat was plotted from field notes of actual surveys made by me or under my supervision and that the same is true and correct to the best of my knowledge.

Date Surveyed
October 10, 1988
Registered Professional Engineer
and/or Land Surveyor
Edgar L. Risenhoover
Certificate No. 5979
Edgar L. Risenhoover, L.S.



NORTHWEST PIPELINE CORP.

ROSA UNIT 218

1645' F/SL 1985' F/WL
Sec. 25, T-31-N, R-6-W, NMPM
Rio Arriba County, New Mexico

