

UNITED STATES  
DEPARTMENT OF THE INTERIOR  
BUREAU OF LAND MANAGEMENT

APPLICATION FOR PERMIT TO DRILL, DEEPEN, OR PLUG BACK

1a. TYPE OF WORK

DRILL ☒

DEEPEN ☐

PLUG BACK ☐

b. TYPE OF WELL

OIL  
WELL ☐

GAS  
WELL ☒

OTHER

SINGLE  
ZONE ☐

MULTIPLE  
ZONE ☐

2. NAME OF OPERATOR

Northwest Pipeline Corporation

3. ADDRESS OF OPERATOR

3539 East 30th Street - Farmington, NM 87401

4. LOCATION OF WELL (Report location clearly and in accordance with any State requirements.)\*

At surface

1535' FSL & 1610' FWL NE/4 SW/4

At proposed prod. zone

Same

14. DISTANCE IN MILES AND DIRECTION FROM NEAREST TOWN OR POST OFFICE\*

15. DISTANCE FROM PROPOSED\*

LOCATION TO NEAREST  
PROPERTY OR LEASE LINE, FT.  
(Also to nearest drlg. unit line, if any)

1535'

16. NO. OF ACRES IN LEASE

1920

17. NO. OF ACRES ASSIGNED  
TO THIS WELL

320

18. DISTANCE FROM PROPOSED LOCATION\*

TO NEAREST WELL, DRILLING, COMPLETED,  
OR APPLIED FOR, ON THIS LEASE, FT.

300'

19. PROPOSED DEPTH

3073'

20. ROTARY OR CABLE TOOLS

Rotary

21. ELEVATIONS (Show whether DF, RT, GR, etc.)

6207' GR DRILLING OPERATIONS AUTHORIZED ARE

22. APPROX. DATE WORK WILL START\*

8-20-89

23. SUBJECT TO COMPLIANCE WITH ATTACHED

"GENERAL REQUIREMENTS"

PROPOSED CASING AND CEMENTING PROGRAM

This action is subject to technical and  
procedural review pursuant to 43 CFR 3165.3  
and appeal pursuant to 43 CFR 3165.4.

SIZE OF HOLE	SIZE OF CASING	WEIGHT PER FOOT	SETTING DEPTH	
13-1/2"	9-5/8"	36# K-55	200'	195 cu.ft.
8-3/4"	7"	20# K-55	2963'	105 cu.ft.
6-1/4"	5-1/2"	23# P110	2863'-3073'	

- 1) Plan to drill Fruitland Formation from 2983' to 3073' and complete open hole with a perforated liner in coal zones.
- 2) The west half of Section 31 is dedicated to this well.

RECEIVED  
AUG 16 1989  
OIL CON. DIV.  
DIST. 3

IN ABOVE, SPACE-DESCRIBE PROPOSED PROGRAM: If proposal is to deepen or plug back, give data on present productive zone and proposed new productive zone. If proposal is to drill or deepen directionally, give pertinent data on subsurface locations and measured and true vertical depths. Give blowout preventer program, if any.

24.

SIGNED

J.R. Vaughan

TITLE Prod. & Drlg. Engineer

DATE

8-1-89

(This space for Federal or State office use)

PERMIT NO.

APPROVAL DATE

APPROVED  
AS AMENDED

APPROVED BY

TITLE

CONDITIONS OF APPROVAL, IF ANY:

NMOCD

AUG 14 1989  
for AREA MANAGER

\*See Instructions On Reverse Side

Submit to Appropriate  
District Office  
State Lease - 4 copies  
Fee Lease - 3 copies

State of New Mexico  
Energy, Minerals and Natural Resources Department  
NORTHWEST PIPELINE CORPORATION  
Form C-102  
Revised 1-1-89

OIL CONSERVATION DIVISION JUN 29 1989  
P.O. Box 2088  
Santa Fe, New Mexico 87504-2088

DISTRICT I  
P.O. Box 1980, Hobbs, NM 88240

DISTRICT II  
P.O. Drawer DD, Artesia, NM 88210

DISTRICT III  
1000 Rio Brazos Rd., Aztec, NM 87410

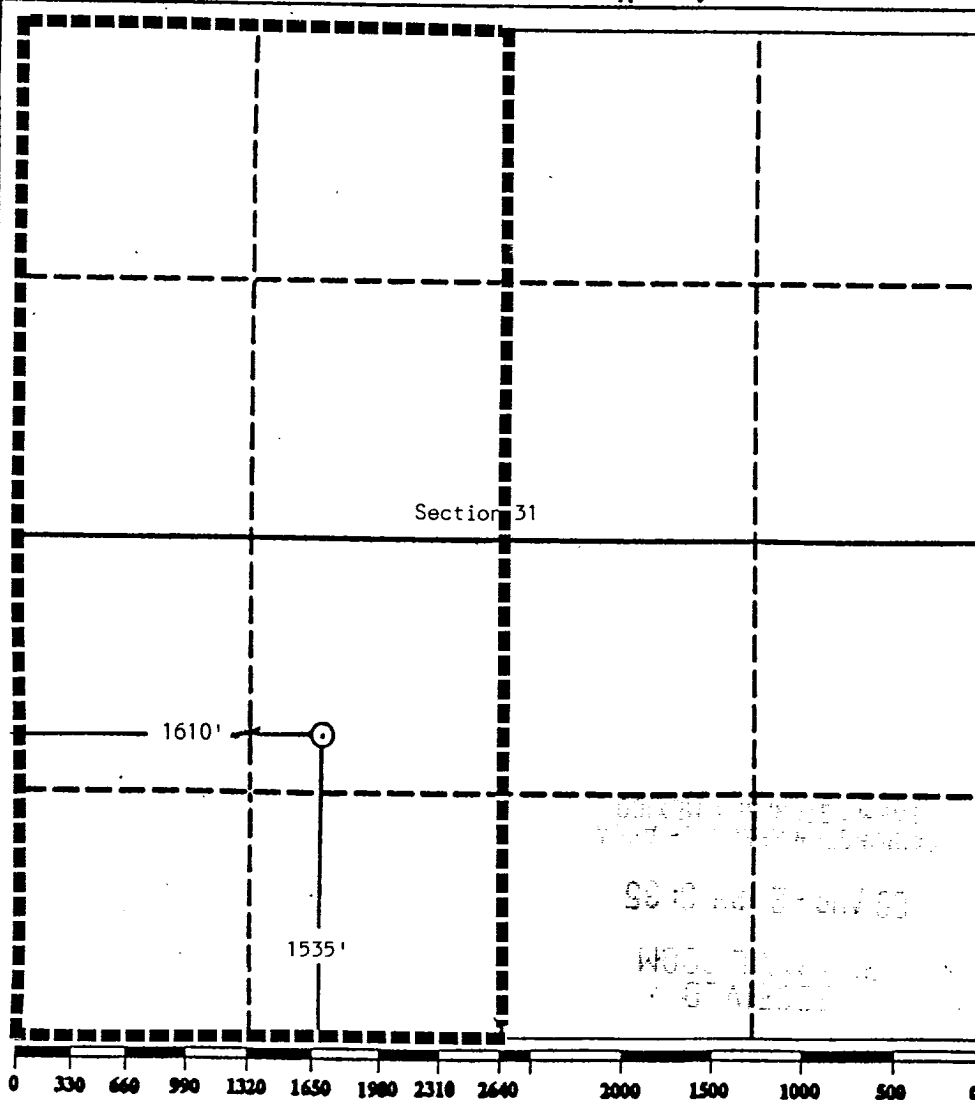
PRODUCTION AND DRILLING

WELL LOCATION AND ACREAGE DEDICATION PLAT

All Distances must be from the outer boundaries of the section

Operator Northwest Pipeline Corporation			Lease San Juan 31-6		Well No. 225
Unit Letter K	Section 31	Township 31 North	Range 6 West	County Rio Arriba	
Actual Footage Location of Well: 1535 feet from the South line and 1610 feet from the West line					
Ground level Elev. 6207	Producing Formation Fruitland	Pool Basin Fruitland-Pool		Dedicated Acreage: 320 Acres	

1. Outline the acreage dedicated to the subject well by colored pencil or hatchure marks on the plat below.
2. If more than one lease is dedicated to the well, outline each and identify the ownership thereof (both as to working interest and royalty).
3. If more than one lease of different ownership is dedicated to the well, have the interest of all owners been consolidated by communitization, unitization, force-pooling, etc.?  
☒ Yes ☐ No If answer is "yes" type of consolidation Unitization  
If answer is "no" list the owners and tract descriptions which have actually been consolidated. (Use reverse side of this form if necessary.)  
No allowable will be assigned to the well until all interests have been consolidated (by communitization, unitization, force-pooling, or otherwise) or until a non-standard unit, eliminating such interest, has been approved by the Division.



OPERATOR CERTIFICATION

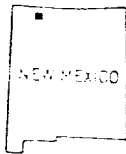
I hereby certify that the information contained herein is true and complete to the best of my knowledge and belief.

Signature  
*Jeff Vaughan*  
Printed Name  
Jeff Vaughan  
Position  
Engineer  
Company  
Northwest Pipeline Corp.  
Date  
July 10, 1989

SURVEYOR CERTIFICATION

I hereby certify that the well location shown on this plat was plotted from field notes of actual surveys made by me or under my supervision, and that the same is true and correct to the best of my knowledge and belief.

Date Surveyed  
May 19, 1989  
Signature & Seal of Professional Surveyor  
*Edgar L. Risenhoover*  
NEW MEXICO  
5979  
Edgar L. Risenhoover



NEW MEXICO

QUADRANGLE LOCATION

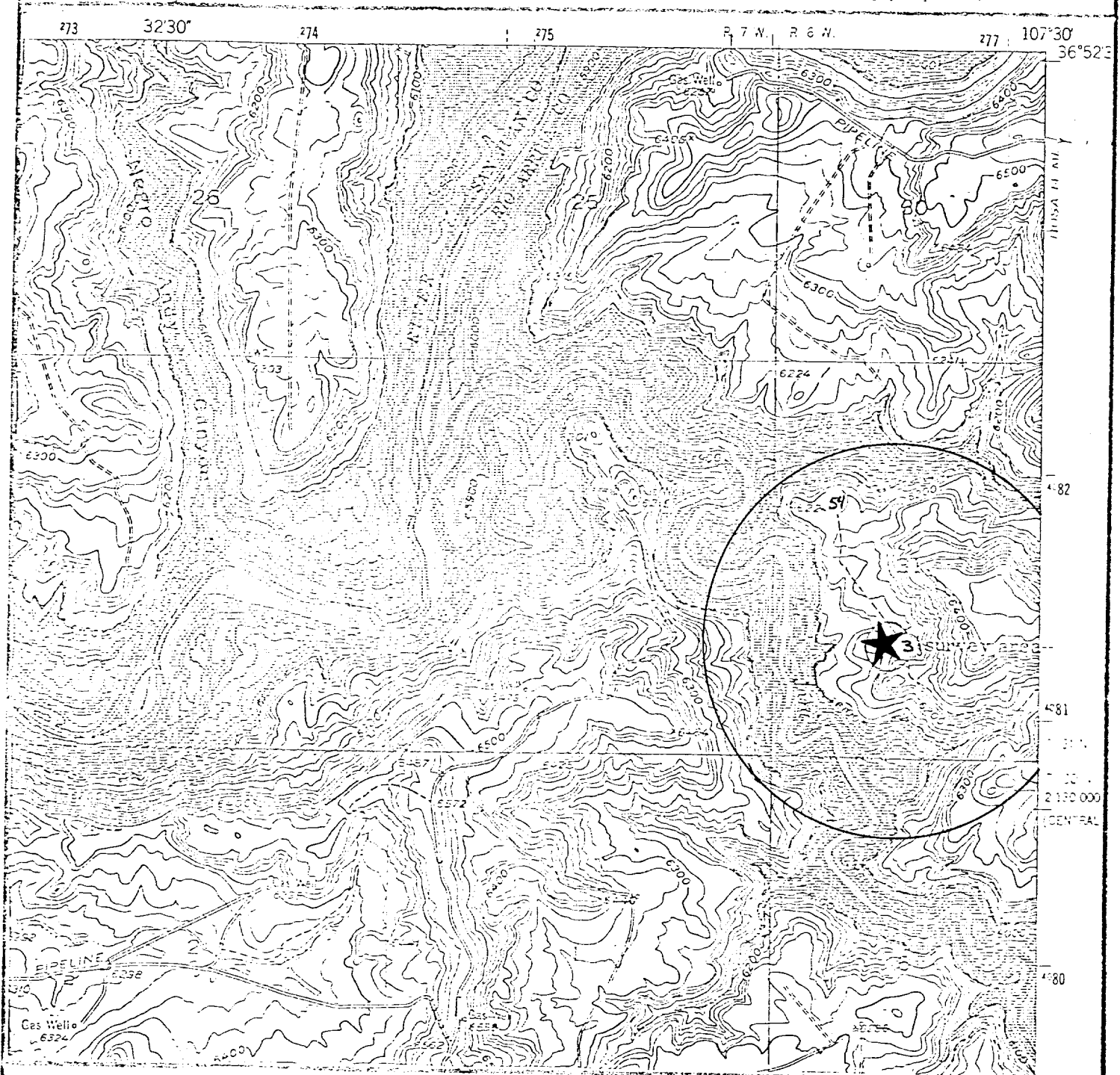
# PINE RIVER, N. MEX.

SE/4 NAVAJO DAM 15 QUADRANGLE

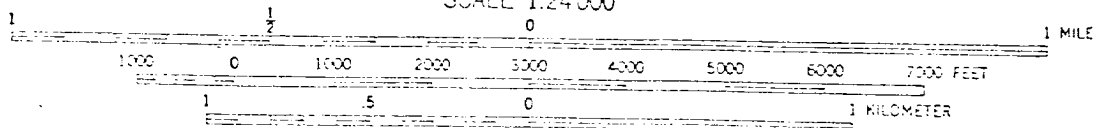
N3545-W10730/7.5

1954

PHOTOREVISED 1971



T31N, R6W  
SCALE 1:24 000



CONTOUR INTERVAL 20 FEET  
DATUM IS MEAN SEA LEVEL

Location map for Well No.

S.J. 31-6 #225

Offsets are SJ 31-6 UNIT WELLS