

UNITED STATES
DEPARTMENT OF THE INTERIOR
BUREAU OF LAND MANAGEMENT

APPLICATION FOR PERMIT TO DRILL, DEEPEN, OR PLUG BACK

1. TYPE OF WORK

DRILL ☒

DEEPEN ☐

PLUG BACK ☐

2. TYPE OF WELL

OIL
WELL ☐

GAS
WELL ☒

OTHER ☐

SINGLE
ZONE ☒

MULTIPLE
ZONE ☐

3. NAME OF OPERATOR

Richmond Petroleum, Inc.

(214) 720-7730

4. ADDRESS OF OPERATOR

2651 N. Harwood, Suite 360, Dallas, Texas 75201

5. LOCATION OF WELL (Report location clearly and in accordance with any State requirements.)

At surface

808' FNL & 1054' FEL (NENE)

At proposed prod. zone
Same

6. DISTANCE IN MILES AND DIRECTION FROM NEAREST TOWN OR POST OFFICE*

12 1/2 AIR MILES NORTH OF GOVERNADOR, NM

7. DISTANCE FROM PROPOSED*

LOCATION TO NEAREST
PROPERTY OR LEASE LINE, FT.
(Also to nearest drilg. unit line, if any)

808'

8. NO. OF ACRES IN LEASE

640

9. DISTANCE FROM PROPOSED LOCATION*

TO NEAREST WELL, DRILLING, COMPLETED,
OR APPLIED FOR, ON THIS LEASE, FT.

~ 4,300'

10. PROPOSED DEPTH

3,500'

11. ELEVATIONS (Show whether DF, RT, GR, etc.)

6610' GL

DRILLING OPERATIONS AUTHORIZED ARE
SUBJECT TO COMPLIANCE WITH ATTACHED

12. APPROX. DATE WORK WILL START*

AS SOON AS POSSIBLE

13. PROPOSED CASING AND CEMENTING PROGRAM

SIZE OF HOLE	SIZE OF CASING	WEIGHT PER FOOT	SETTING DEPTH	
12-1/4"	8-5/8"	24#	240'	140 sx or to surface
7-7/8"	5-1/2"	15.5#	3500'	500 sx

TIGHT HOLE. PLEASE KEEP CONFIDENTIAL

CONFIDENTIAL

1. Per NMOC Rule 102(c), a copy of this APD has been mailed to Schalk Development Company., operator of a well in this (NENE) quarter-quarter. Well site has been inspected by Schalk Development Company.

2. Drilling technical program is attached.

3. Surface use and operations plan pursuant to NTL-6 is attached.

"Approval of this action does
not warrant that the applicant
holds legal or equitable rights
or title to this lease."

IN ABOVE SPACE DESCRIBE PROPOSED PROGRAM: If proposal is to deepen or plug back, give data on present productive zone and proposed new productive zone. If proposal is to drill or deepen directionally, give pertinent data on subsurface locations and measured and true vertical depths. Give blowout preventer program, if any.

24.

SIGNED

[Signature]

TITLE Engineer

DATE SEP 11, 1989

(This space for Federal or State office use)

PERMIT NO.

APPROVAL DATE

APPROVED BY

CONDITIONS OF APPROVAL, IF ANY:

RECEIVED

JAN 22 1990

OIL CON. DIV.

DIST 3

*See Instructions On Reverse Side

APPROVED
AS AMENDED

JAN 08 1990

AREA MANAGER

All distances must be from the outer boundaries of the Section.

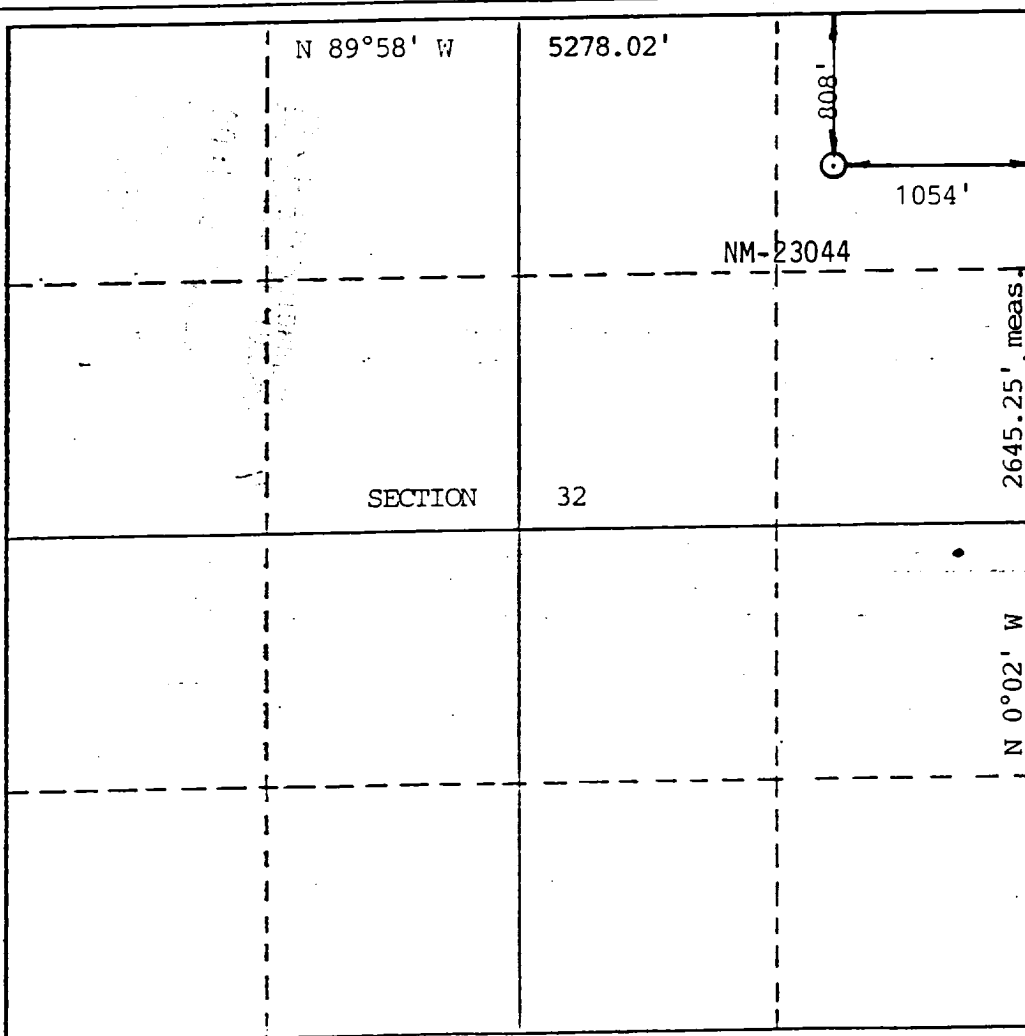
Operator Richmond Petroleum Inc.		Lease Federal 31-4-32		Well No. -1
Unit Letter A	Section 32	Township 31 N.	Range 4 W.	County Rio Arriba
Actual Footage Location of Well:				
808 feet from the North line and		1054 feet from the East line		
Ground Level Elev. 6610	Producing Formation Fruitland	Pool Basin	Dedicated Acreage: 320 Acres	

1. Outline the acreage dedicated to the subject well by colored pencil or hachure marks on the plat below.
2. If more than one lease is dedicated to the well, outline each and identify the ownership thereof (both as to working interest and royalty).
3. If more than one lease of different ownership is dedicated to the well, have the interests of all owners been consolidated by communitization, unitization, force-pooling, etc?

☐ Yes ☐ No If answer is "yes," type of consolidation _____

If answer is "no," list the owners and tract descriptions which have actually been consolidated. (Use reverse side of this form if necessary.) _____

No allowable will be assigned to the well until all interests have been consolidated (by communitization, unitization, forced-pooling, or otherwise) or until a non-standard unit, eliminating such interests, has been approved by the Division.



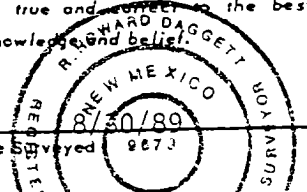
CERTIFICATION

I hereby certify that the information contained herein is true and complete to the best of my knowledge and belief.

Steven S. Dunn

Name	Steven S. Dunn
Position	Engineer
Company	Richmond Petroleum, Inc.
Date	SEP 11, 1989

I hereby certify that the well location shown on this plat was plotted from field notes of actual surveys made by me or under my supervision, and that the same is true and correct to the best of my knowledge and belief.



Registered Professional Engineer and/or Land Surveyor	R. Howard Daggett
Certificate No.	40070

RICHMOND PETROLEUM, INC.

Federal 31-4-32 No. 1

808' FNL & 1054' FEL

Section 32, T31N, R4W

Rio Arriba County, New Mexico

ESPINOSA RANCH QUADRANGLE

NEW MEXICO-RIO ARRIBA CO

75 MINUTE SERIES (TOPOGRAPHIC)

