

UNITED STATES
DEPARTMENT OF THE INTERIOR
GEOLOGICAL SURVEY30-039-24625
5. LEASE DESIGNATION AND SERIAL NO.
NM03357

APPLICATION FOR PERMIT TO DRILL, DEEPEN, OR PLUG BACK

1a. TYPE OF WORK

DRILL ☒DEEPEN ☐PLUG BACK ☐

b. TYPE OF WELL

OIL
WELL ☐GAS
WELL ☒OTHER ☐SINGLE
ZONE ☒MULTIPLE
ZONE ☐

2. NAME OF OPERATOR

Blackwood & Nichols Co., Ltd.

3. ADDRESS OF OPERATOR

P.O. Box 1237, Durango, Colorado 81302

4. LOCATION OF WELL (Report location clearly and in accordance with any State requirements.)*
At surface

2335' FNL - 1143' FEL

At proposed prod. zone

7. UNIT AGREEMENT NAME

Northeast Blanco Unit

8. FARM OR LEASE NAME

Northeast Blanco Unit

9. WELL NO.

497

10. FIELD AND POOL, OR WILDCAT

Basin Fruitland Coal

11. SEC., T., R., M., OR BLK.
AND SURVEY OR AREAH
Sec. 30, T31N, R6W

12. COUNTY OR PARISH

Rio Arriba

13. STATE

NM

14. DISTANCE IN MILES AND DIRECTION FROM NEAREST TOWN OR POST OFFICE*

20 Miles southeast of Ignacio, Colorado

15. DISTANCE FROM PROPOSED*
LOCATION TO NEAREST
PROPERTY OR LEASE LINE, FT.
(Also to nearest drig. unit line, if any)

1143'

16. NO. OF ACRES IN LEASE

640

17. NO. OF ACRES ASSIGNED
TO THIS WELL

320

18. DISTANCE FROM PROPOSED LOCATION*
TO NEAREST WELL, DRILLING, COMPLETED,
OR APPLIED FOR, ON THIS LEASE, FT.

1134'

19. PROPOSED DEPTH

3465'

20. ROTARY OR CABLE TOOLS

Rotary

21. ELEVATIONS (Show whether DF, RT, TOP, etc.)

6519 GL procedural review pursuant to 43 CFR 3165.3

22. APPROX. DATE WORK WILL START*

April 1, 1990

23.

and appeal pursuant to 43 CFR 3165.4
PROPOSED CASING AND CEMENTING PROGRAMCONTRACT NO. 30-039-24625-1
SUBJECT TO CONTRACT WITH ATTACHED

SIZE OF HOLE	SIZE OF CASING **	WEIGHT PER FOOT.	SETTING DEPTH	QUANTITY OF CEMENT
12-1/4"	9-5/8"	36#	300'	295 CF to circulate
8-3/4"	7"	23#	3130'	940 CF to circulate
6-1/4"	5-1/2" or 4-1/2"	17#, 11.6#	3130'-3465' 2980	30 CF to circulate

Propose to spud in the San Jose formation. Will drill a 12-1/4" surface hole to a TD of 300'. Surface casing will be run and cemented with cement returns to surface. WOC 12 hours. Test to 600psi/30 minutes. Drill an 8-3/4" hole to a TD of 3130' using fresh water mud. No poisonous gasses or abnormal pressures are anticipated. Run intermediate casing and cement with cement returns to surface. WOC 12 hours. Test to 1500 psi/30 minutes. Drill a 6-1/4" hole to a TD of 3465', using water and air. Run a mudlogging unit while drilling this interval. Run the production liner. A 4-1/2" liner will be cemented if the well's natural flow capacity indicates the need for fracture stimulation.

Surface ownership is Bureau of Reclamation.

APPROVAL EXPIRES 8-1-90
UNLESS DRILLING IS COMMENCED.
SPUD NOTICE MUST BE SUBMITTED
WITHIN 10 DAYS.

IN ABOVE SPACE DESCRIBE PROPOSED PROGRAM: If proposal is to deepen or plug back, give data on present productive zone and proposed new productive zone. If proposal is to drill or deepen directionally, give pertinent data on subsurface locations and measured and true vertical depths. Give blowout preventer program, if any.

24.

SIGNED

William F. Clark

TITLE

Operations Manager

(This space for Federal or State office use)

PERMIT NO.

APPROVAL DATE

APPROVED BY

CONDITIONS OF APPROVAL, IF ANY

FEB 13 1990

TITLE

NMOC

OIL CON. DIV.
DIST. 3

*See Instructions On Reverse Side

APPROVED
AS AMENDED

FEB 07 1990

AREA MANAGER

Submit to Appropriate
District Office
State Lease - 4 copies
Fee Lease - 3 copies

State of New Mexico
Energy, Minerals and Natural Resources Department

Form C-102
Revised 1-1-89

OIL CONSERVATION DIVISION

P.O. Box 2088
Santa Fe, New Mexico 87504-2088

RECEIVED
BLM MAIL ROOM

90 JAN 10 AM 11:01

DISTRICT I
P.O. Box 1980, Hobbs, NM 88240

DISTRICT II
P.O. Drawer DD, Artesia, NM 88210

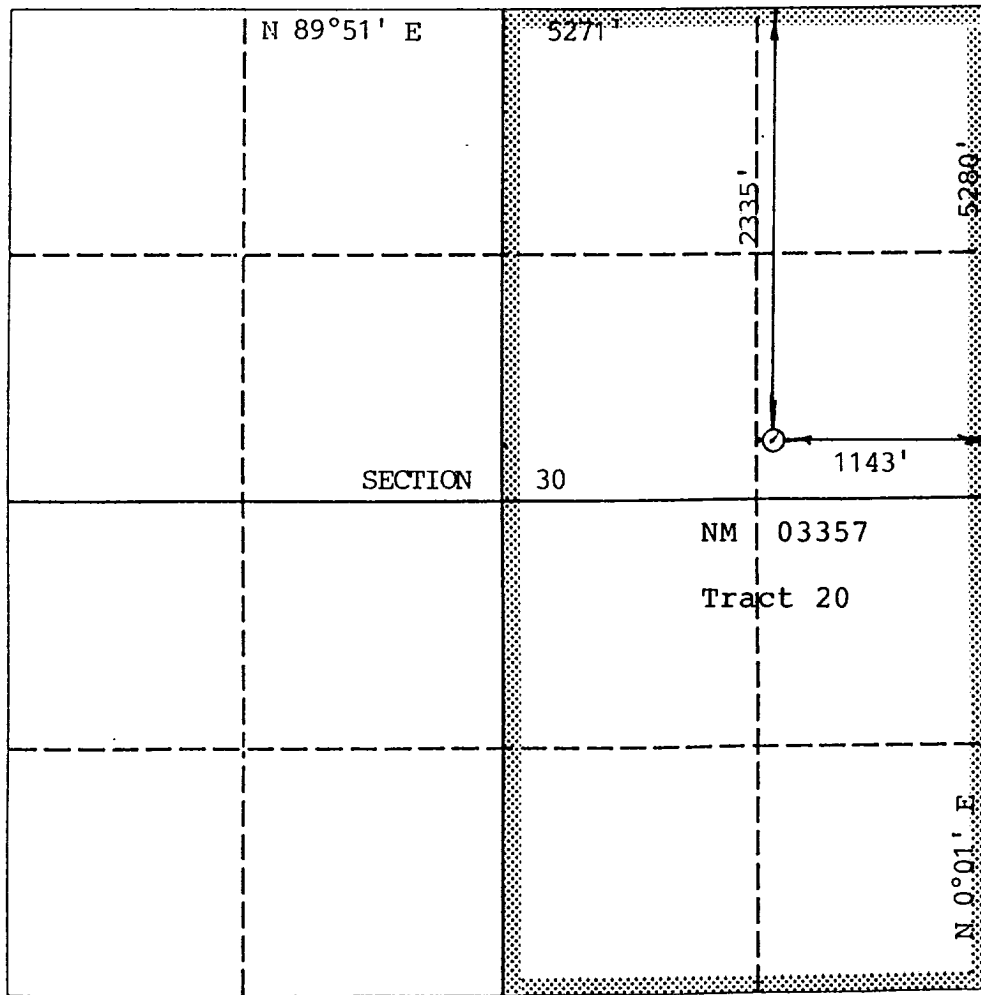
DISTRICT III
1000 Rio Brazos Rd., Aztec, NM 87410

WELL LOCATION AND ACREAGE DEDICATION PLAT

All Distances must be from the outer boundaries of the section

Operator BLACKWOOD NICHOLS CO. LTD.			Lease NORTHEAST BLANCO UNIT		Well No. 497
Unit Letter H	Section 30	Township 31 N.	Range 6 W.	County NMPM RIO ARriba	
Actual Footage Location of Well: 2335 feet from the NORTH line and 1143 feet from the EAST line					
Ground level Elev. 6519	Producing Formation Fruitland Coal		Pool Basin Fruitland Coal		Dedicated Acreage: 320 Acres

1. Outline the acreage dedicated to the subject well by colored pencil or hatchure marks on the plat below.
2. If more than one lease is dedicated to the well, outline each and identify the ownership thereof (both as to working interest and royalty).
3. If more than one lease of different ownership is dedicated to the well, have the interest of all owners been consolidated by communitization, unitization, force-pooling, etc.?
☐ Yes ☐ No If answer is "yes" type of consolidation NA
If answer is "no" list the owners and tract descriptions which have actually been consolidated. (Use reverse side of this form if necessary).
No allowable will be assigned to the well until all interests have been consolidated (by communitization, unitization, forced-pooling, or otherwise) or until a non-standard unit, eliminating such interest, has been approved by the Division.



OPERATOR CERTIFICATION

I hereby certify that the information contained herein is true and complete to the best of my knowledge and belief.

Signature *William F. Clark*
Printed Name **William F. Clark**
Position **Operations Manager**
Company **Blackwood & Nichols Co**
Date **8 Jan '80**

SURVEYOR CERTIFICATION

I hereby certify that the well location shown on this plat was plotted from field notes of actual surveys made by me or under my supervision, and that the same is true and correct to the best of my knowledge and belief.

Date Surveyed **9/25/80**
Signature of Professional Surveyor *Howard Daggett*
Professional Surveyor
Certificate No. **9879**
Registered Professional Land Surveyor

