

UNITED STATES
DEPARTMENT OF THE INTERIOR
BUREAU OF LAND MANAGEMENT

SUNDRY NOTICES AND REPORTS ON WELLS

1. TYPE OF WELL GAS		5. LEASE NUMBER SF-0078891	
2. OPERATOR MERIDIAN OIL INC. 14538		6. IF INDIAN, ALL. OR TRIBE NAME	
3. ADDRESS & PHONE NO. OF OPERATOR P O BOX 4289 FARMINGTON, NM 87499		7. UNIT AGREEMENT NAME ROSA UNIT 7440	
4. LOCATION OF WELL 1930'FSL 1860'FWL		8. FARM OR LEASE NAME ROSA UNIT	
		9. WELL NO. 280	
		10. FIELD, POOL, OR WILDCAT 71629 BASIN FRUITLAND COAL	
		11. SEC. T. R. M OR BLK. K SEC. 1 T31N R04W NMPM	
14. PERMIT NO.	15. ELEVATIONS 7018'GL	12. COUNTY RIO ARRIBA	13. STATE NM

16. SUBSEQUENT REPORT OF: Amended Application for Permit to Drill
Oper. Change from Parker & Parsley pet

17. Describe proposed or completed operations

Reference is made to Evergreen Operating Corp's Application for Permit to Drill the Rosa Unit #280 approved 08-05-90 at 2000'FSL and 1890'FWL.

Meridian Oil Inc. will operate and drill this well as the Rosa Unit #280 at 1930'FSL and 1860'FWL of Section 1 of Township T31N and Range R04W.

Meridian Oil did not move the stake, but revised the footages as a result of resurveying the location. Meridian Oil needs to drill this well by 11-01-90 because of the USFS deadline.

Submitted for review:

- C102
- Operations Plan
- BOP Diagrams
- Facilities Diagram

18. AUTHORIZED BY: *[Signature]*
REGULATORY AFFAIRS

RECEIVED

OCT 17 1990

OIL CON. DIV.

DIST. 3 10-12-90

DATE

NOTE: THIS FORMAT IS ISSUED IN LIEU OF US BLM FORM 3160-5.

(This space for Federal or State office use)

APPROVED BY
CONDITION OF APPROVAL, IF ANY:

TITLE

DATE **Ken Townsend**

FOR AREA MANAGER
FARMINGTON RESOURCE OFFICE

NMOOD

Submit to Appropriate
District Office
State Lease - 4 copies
Fee Lease - 3 copies

State of New Mexico
Energy, Minerals and Natural Resources Department

Handwritten: Hecroy FOR
Form C-102
Revised 1-1-89

OIL CONSERVATION DIVISION

P.O. Box 2088
Santa Fe, New Mexico 87504-2088

DISTRICT I
P.O. Box 1980, Hobbs, NM 88240

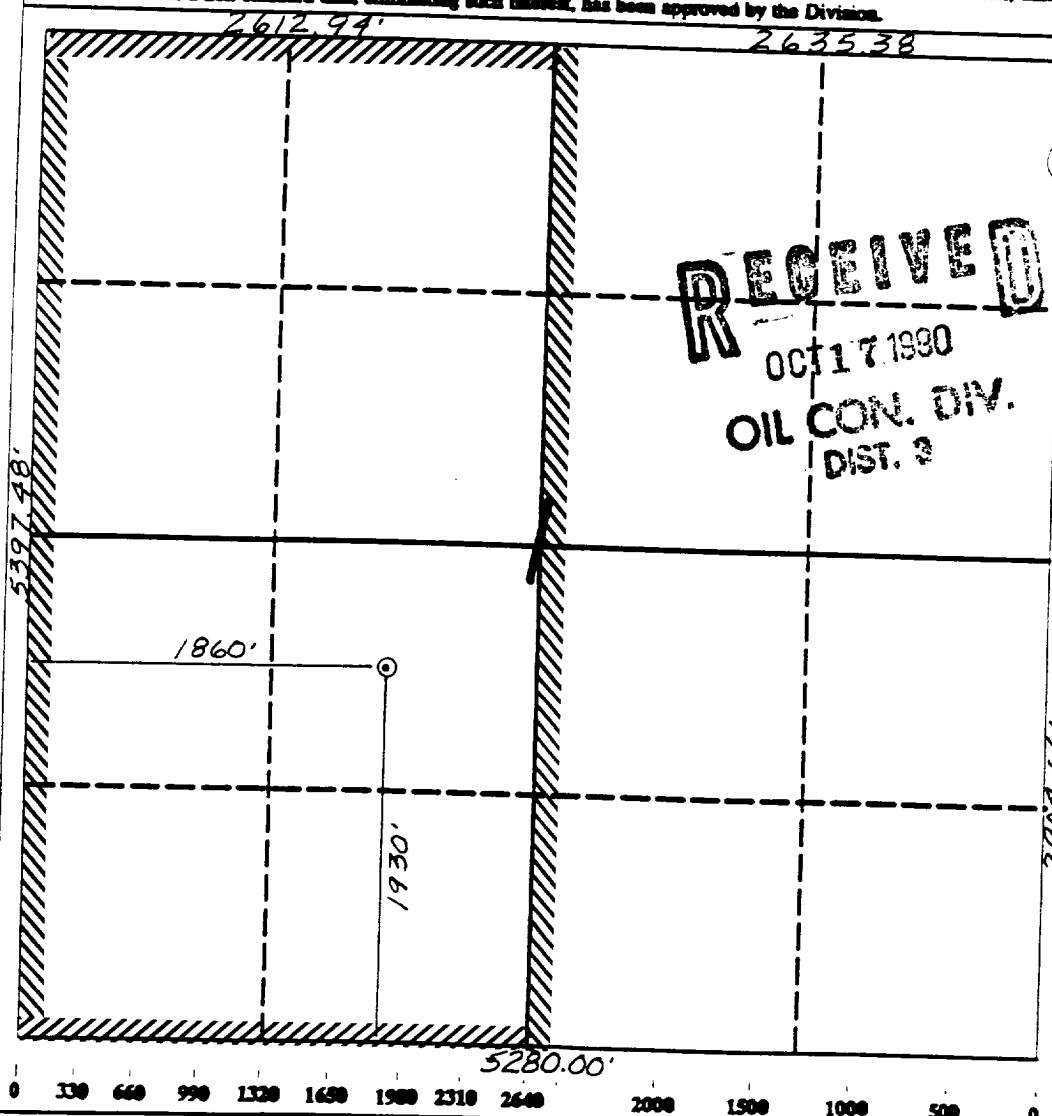
DISTRICT II
P.O. Drawer DD, Artesia, NM 88210

DISTRICT III
1000 Rio Brazos Rd., Aztec, NM 87410

WELL LOCATION AND ACREAGE DEDICATION PLAT
All Distances must be from the outer boundaries of the section

Operator Meridian Oil Inc.			Lease Rosa Unit		Well No. 280
Unit Letter K	Section 1	Township 31 North	Range 4 West	County Rio Arriba	
Actual Footage Location of Well: 1930 feet from the South line and 1860 feet from the West line					
Ground level Elev. 7018'	Producing Formation Fruitland Coal		Pool Basin	Dedicated Acreage: Acres	

- Outline the acreage dedicated to the subject well by colored pencil or lacquer marks on the plat below.
- If more than one lease is dedicated to the well, outline each and identify the ownership thereof (both as to working interest and royalty).
- If more than one lease of different ownership is dedicated to the well, have the interest of all owners been consolidated by communitization, unitization, force-pooling, etc.?
☒ Yes ☐ No If answer is "yes" type of consolidation unitization
If answer is "no" list the owners and tract descriptions which have actually been consolidated. (Use reverse side of this form if necessary.)
No allowable will be assigned to the well until all interests have been consolidated (by communitization, unitization, forced-pooling, or otherwise) or until a non-standard unit, eliminating such interest, has been approved by the Division.



OPERATOR CERTIFICATION

I hereby certify that the information contained herein is true and complete to the best of my knowledge and belief.

Handwritten Signature: Peggy Bradfield
Signature

Peggy Bradfield
Printed Name

Regulatory Affairs
Position

Meridian Oil Inc.
Company

10-12-90
Date

SURVEYOR CERTIFICATION

I hereby certify that the well location shown on this plat was plotted from field notes of actual surveys made by me or under my supervision, and that the same is true and correct to the best of my knowledge and belief.

10-10-90
Date Surveyed

Handwritten Signature: Neale Edwards
Signature
Professional



Neale Edwards
Certificate No.

Well Name: 280 ROSA UNIT
 Sec. 1 T31N R04W
 BASIN FRUITLAND COAL

1930'FSL 1860'FWL
 RIO ARRIBA NEW MEXICO
 Elevation 7018'GL

Formation tops: Surface- SAN JOSE

Ojo Alamo- 3395

Kirtland- 3520

Fruitland- 3850

Fruitland Coal Top- 3926

Fruitland Coal Base- 3976

Pictured Cliffs- 3984

Intermediate TD- 3884

Total Depth- 3978

Logging Program: Mud logs from intermediate to total depth.

Mud Program:	Interval	Type	Weight	Visc.	Fl. Loss
	0 - 200	Spud	8.4 - 8.9	40-50	no control
	200 - 3884	Non-dispersed	8.4 - 9.1	30-60	no control
	3884 - 3978	Formation Water	8.4		no control

Casing Program:	Hole Size	Depth Interval	Csg. Size	Weight	Grade
	12 1/4"	0 - 200	9 5/8"	32.3#	H-40
	8 3/4"	0 - 3884	7"	20.0#	K-55
	6 1/4"	3834 - 3978	5 1/2"	15.5#	K-55
Tubing Program:		0 - 3978	2 7/8"	6.5#	J-55

Float Equipment: 9 5/8" surface casing - saw tooth guide shoe. Centralizers will be run in accordance with Onshore Order #2.

7" intermediate casing - guide shoe and self-fill insert float valve. Three centralizers run every other joint above shoe. Run insert float one joint above the guide shoe. Two turbolizing type centralizers - one below and one into the base of the Ojo Alamo @ 3520'. Standard centralizers thereafter every fourth joint up to the base of the surface pipe.

5 1/2" production casing - float shoe on bottom and a pre-drilled liner run to the 7" casing with a minimum 50' overlap. Liner hanger is a double slip grip type.

Wellhead Equipment: 9 5/8" x 7" x 2 7/8" x 11" 3000 psi xmas tree assembly.

Cementing:

9 5/8" surface casing - cement with 160 sacks of class "B" cement with 1/4# flocele/sack and 3% calcium chloride (189 cu ft. of slurry, 200% excess to circulate to surface). WOC 12 hours. Test casing to 600 psi for 30 minutes.

7" intermediate casing - lead with 579 sacks of 65/35 class "B" poz with 6% gel, 2% calcium chloride and 1/2 cu ft. Perlite/sack (10.3 gallons of water/sack) tail with 100 sacks of class "B" with 2% calcium chloride. 1236 cu ft. of slurry, 110% excess to circulate to surface. If hole conditions permit, a 600 ft spacer will be run ahead of the cement slurry to avoid mud contamination of the cement. WOC 12 hours. If cement does not circulate to surface, a temperature log will be run after 8 hours to determine TOC.

5 1/2" liner - do not cement.