

**UNITED STATES
DEPARTMENT OF THE INTERIOR
BUREAU OF LAND MANAGEMENT**

RECEIVED
BLM MAIL ROOM
91 MAY 14 AM 11:16

Sundry Notices and Reports on Wells

1. Type of Well

GAS

2. Name of Operator

Meridian Oil Inc.

3. Address & Phone No. of Operator

Box 4289, Farmington, NM 87499 (505) 326-9700

4. Location of Well, Footage, Sec, T, R, M.

1850'S, 880'W Sec. 24, T-31-N, R-4-W, NMPM

5. Lease NumberFARMINGTON AREA
SF-078887**6. If Indian, All. or**

Tribe Name

7. Unit Agreement Name

Rosa Unit 7440

8. Well Name & Number

Rosa Unit #308

9. API Well No.

30-039-24935

10. Field and Pool

Basin Fruitland Coal

11. County and State

Rio Arriba County, NM

12. CHECK APPROPRIATE BOX TO INDICATE NATURE OF NOTICE, REPORT, OTHER DATA**Type of Submission****Type of Action**☐ Notice of Intent☐ Abandonment☐ Change of Plans☐ Subsequent Report☐ Recompletion☐ New Construction☐ Final Abandonment☐ Plugging Back☐ Non-Routine Fracturing☐ Casing Repair☐ Water Shut Off☐ Altering Casing☐ Conversion to Injection☐ Other**13. Describe Proposed or Completed Operations**

Reference is made to Parker and Parsley Petroleum Company's permit to drill the Rosa Unit #308 submitted 06-27-90 and approved 09-19-90.

* Meridian Oil Inc. will operate and drill this well as the Rosa Unit #308 at 1850'S, 880'W of Section 24, T-31-N, R-4-W.

Submitted for review:

- Plat
- Operations Plan
- BOP Diagram
- Location laydown
- Cut and fill diagram

RECEIVED

MAY 31 1991

**OIL CON. DIV
DIST. 3**

14. I hereby certify that the foregoing is true and correctSigned [Signature] Title Regulatory Affairs Date 5-13-91

**APPROVED
AS AMENDED**

(This space for Federal or State office use)

APPROVED BY _____

TITLE _____

CONDITION OF APPROVAL, IF ANY:

MAY 29 1991

DATE
AREA MANAGER

HMOOD

Well Name: 308 ROSA UNIT
 Sec. 24 T31N R04W
 BASIN FRUITLAND COAL

1850' FSL 880' FWL
 RIO ARRIBA NEW MEXICO
 Elevation 7018' GL

Formation tops: Surface- SAN JOSE
 Ojo Alamo- 3284
 Kirtland- 3420
 Fruitland- 3615
 Fruitland Coal Top- 3748
 Fruitland Coal Base- 3844
 Pictured Cliffs- 3876

Total Depth- 3846

Logging Program: Mud logs from 3615 to total depth.

Mud Program:	Interval	Type	Weight	Visc.	Fl. Loss
	0 - 200	Spud	8.4 - 8.9	40-50	no control
	200 - 3846	Non-dispersed	8.4 - 9.5	30-60	no control

Casing Program:	Hole Size	Depth Interval	Csg. Size	Weight	Grade
	12 1/4"	0 - 200	8 5/8"	24.0#	K-55
	7 7/8"	0 - 3846	5 1/2"	15.5#	K-55
Tubing Program:		0 - 3846	2 3/8"	4.7#	J-55

Float Equipment: 8 5/8" surface casing - saw tooth guide shoe. Centralizers will be run in accordance with Onshore Order #2.

5 1/2" production casing - guide shoe on bottom. Float valve one joint off bottom. Three centralizers run every other joint above shoe. Two turbolizing type centralizers - one below and one into the base of the Ojo Alamo @ 3420' . Stage tool @ 3420' . Standard centralizers thereafter every fourth joint up to the base of the surface pipe.

Wellhead Equipment: 8 5/8" x 5 1/2" x 2 3/8" x 11" 3000 psi xmas tree assembly

Cementing:

8 5/8" surface casing - cement with 211 sacks of class "B" cement with 1/4# flocele/sack and 3% calcium chloride (248 cu ft. of slurry, 200% excess to circulate to surface). WOC 12 hours. Test casing to 600 psi for 30 minutes.

5 1/2" production casing - First stage: Lead with 70 sacks of 65/35 Class "B" pozmix with 6% gel, 2% CaCl₂, 5#/sack Gilsonite, and 1/4#/sack Flocele. Tail with 130 sacks Class "B" with 2% CaCl₂. Second Stage: Lead with 190 sacks of 65/35 Class "B" pozmix with 6% gel, 2% CaCl₂, 5#/sack Gilsonite, and 1/4#/sack Flocele. Tail with 60 sacks Class "B" with 2% CaCl₂. WOC 12 hours. If cement does not circulate to surface, a temperature log will be run after 8 hours to determine TOC. for 30 minutes.

BOP and Tests:

Surface to TD - 11" 3000 psi double gate BOP stack (Reference Figure #1 and #2). Prior to drilling out surface casing, test rams to 600 psi for 30 minutes.

Completion - 6" 3000 psi double gate BOP stack (Reference Figure #2.) Prior to completion operations, test rams to 3000 psi for 15 minutes.

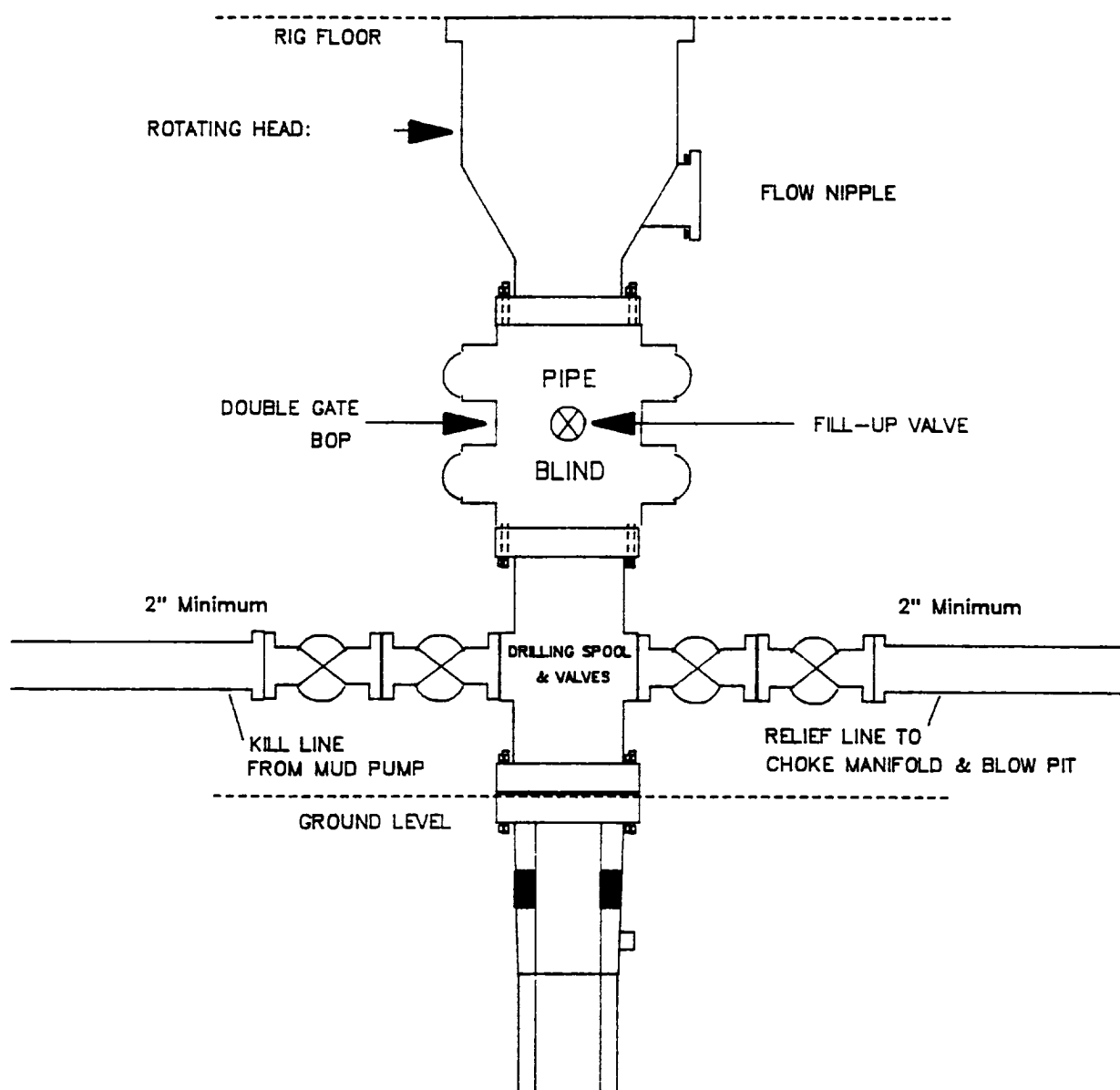
From surface to TD - choke manifold (Reference Figure #3).

Pipe rams will be actuated at least once each day and blind rams actuated once each trip to test proper functioning. An upper kelly cock valve with handle and drill string safety valves to fit each drill string will be maintained and available on the rig floor.

Additional Information:

- * The Fruitland coal formation will be completed.
- * Anticipated Fruitland pore pressure is 1600 psi.
- * This gas is dedicated.
- * The W/2 of Section 24 is dedicated to this well.
- * New casing will be utilized.
- * Cementing Contractor will provide the BLM with a chronological log including the pump rate and pressure, and the slurry density and volume for all cement jobs.
- * Pipe movement (either rotation or reciprocation) will be done if hole conditions permit.

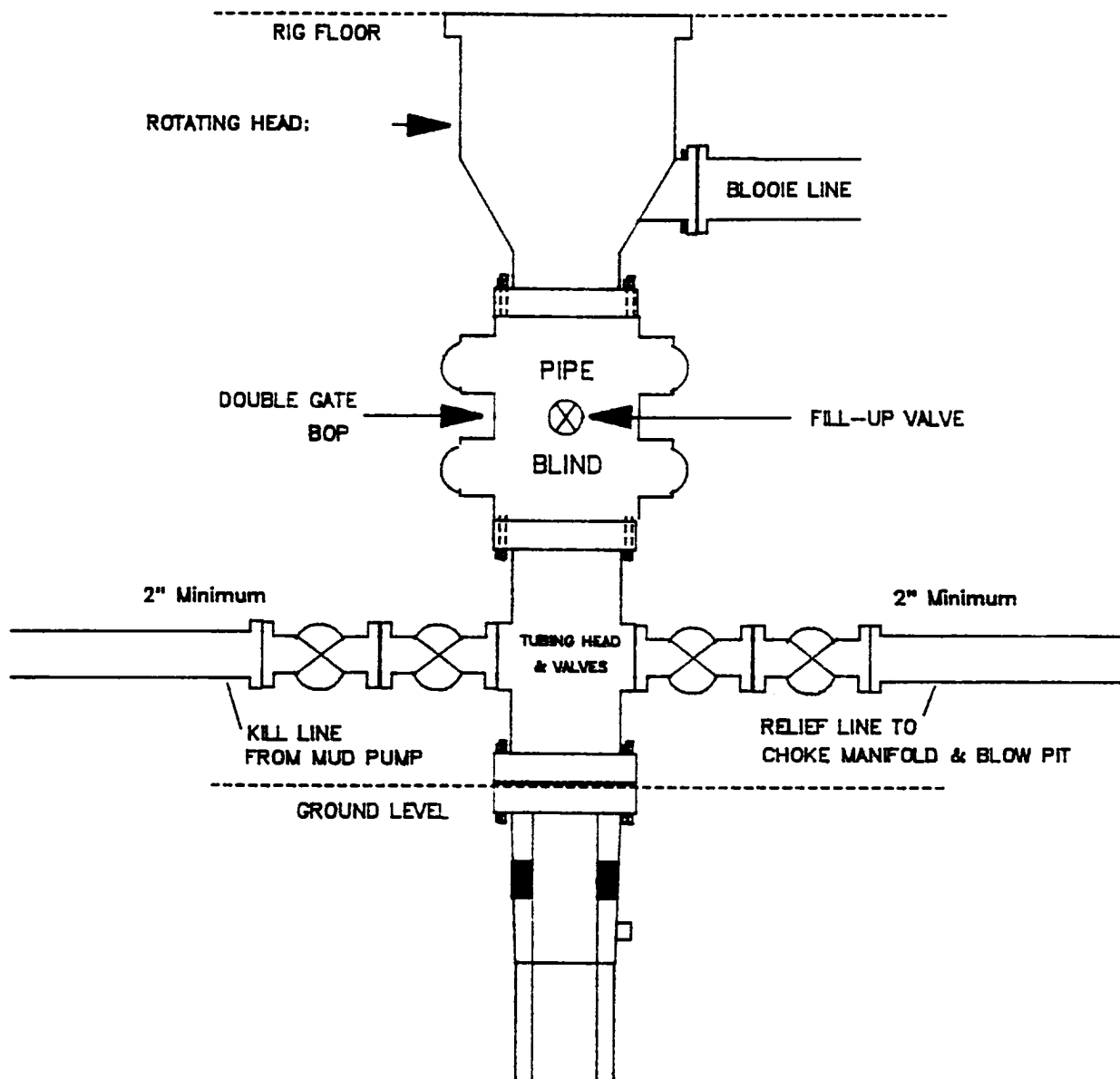
MERIDIAN OIL INC.
Drilling Rig
BOP Configuration



Minimum BOP installation for a typical Fruitland Coal well from surface to Total Depth. 11" Bore (10" Nominal), 2000psi minimum working pressure double gate BOP to be equipped with blind and pipe rams. A Schaffer Type 50 or equivalent rotating head to be installed on the top of BOP. All equipment is 2000psi working pressure/or greater.

Figure #1

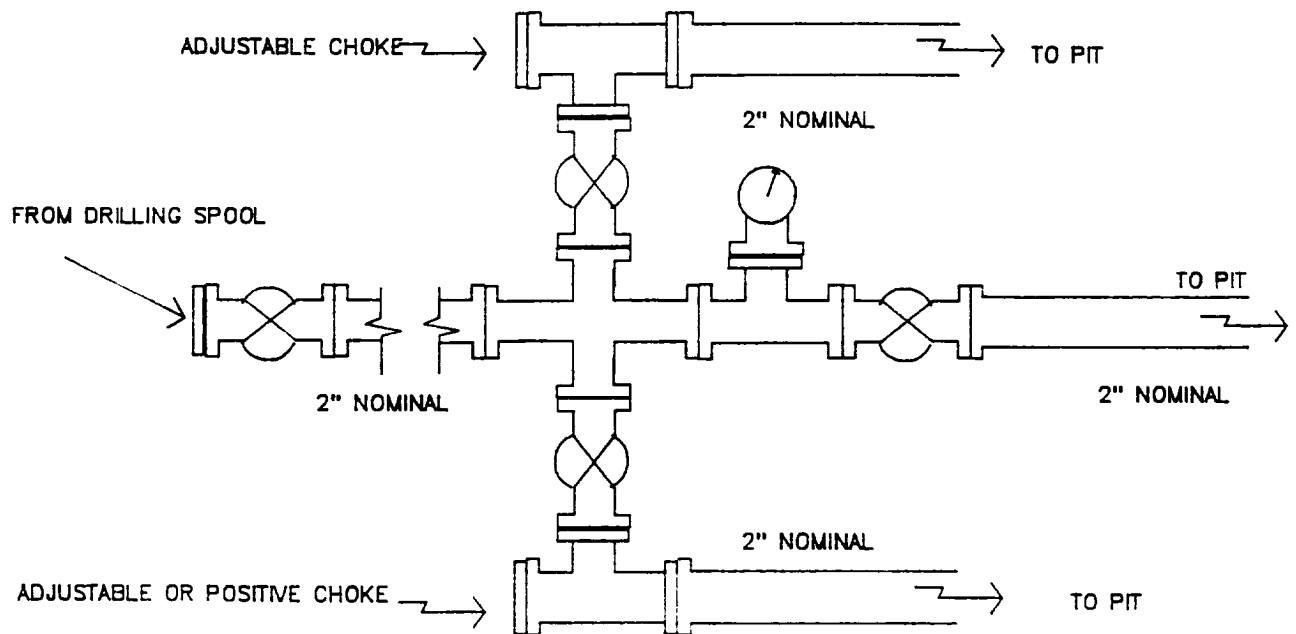
MERIDIAN OIL INC.
Completion Rig
BOP Configuration



Minimum BOP installation for Completion Operations. 7 1/16" Bore (6" Nominal), 3000psi working pressure double gate BOP to be equipped with blind and pipe rams.

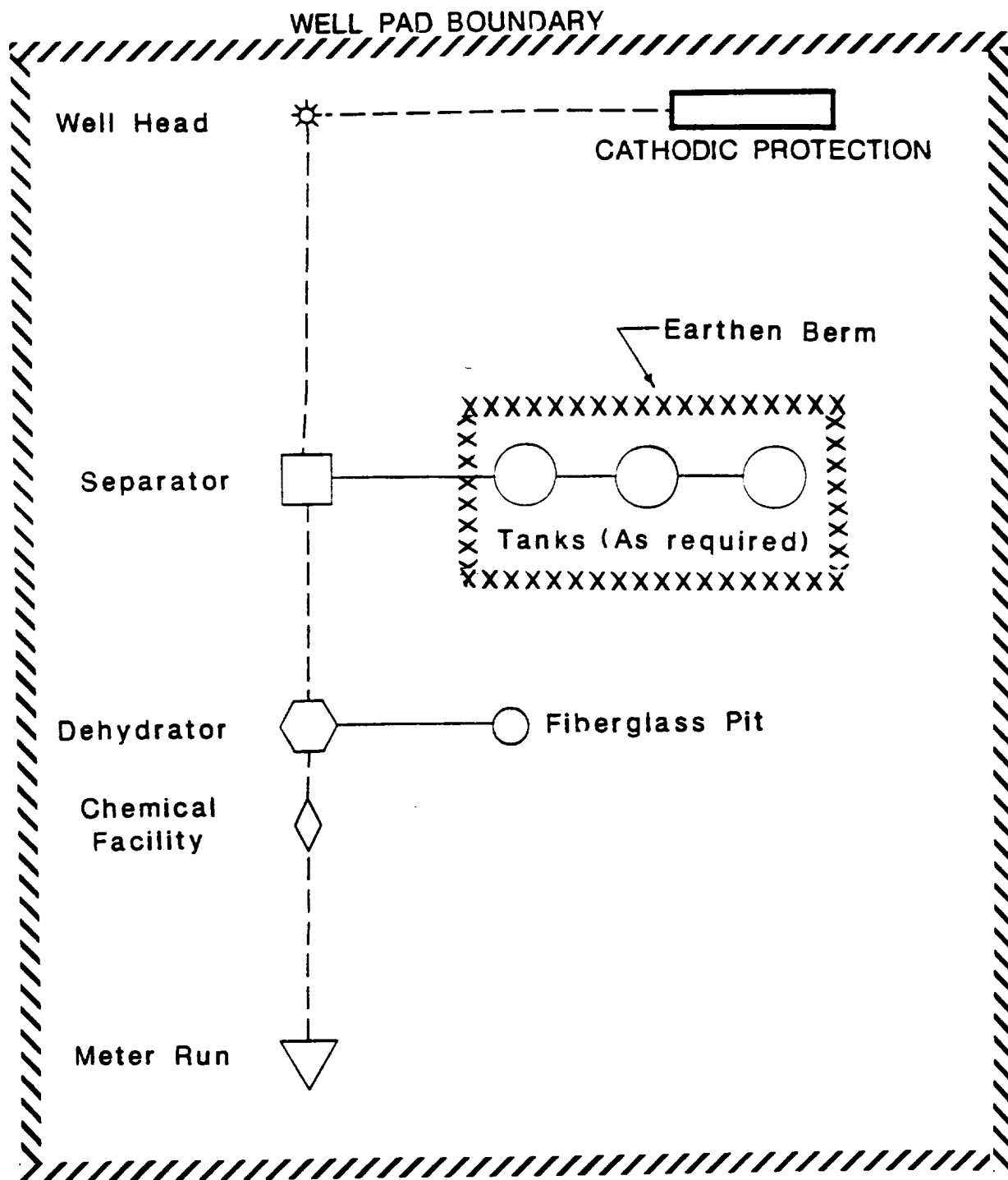
Figure #2

MERIDIAN OIL INC.
Typical Fruitland Coal Well
Choke Manifold Configuration



Minimum choke manifold installation for a typical Fruitland Coal well from surface to Total Depth. 2", 2000psi working pressure equipment with two chokes.

Figure #3



PLAT #1

MERIDIAN OIL
 ANTICIPATED
 PRODUCTION FACILITIES
 FOR A
 FRUITLAND WELL

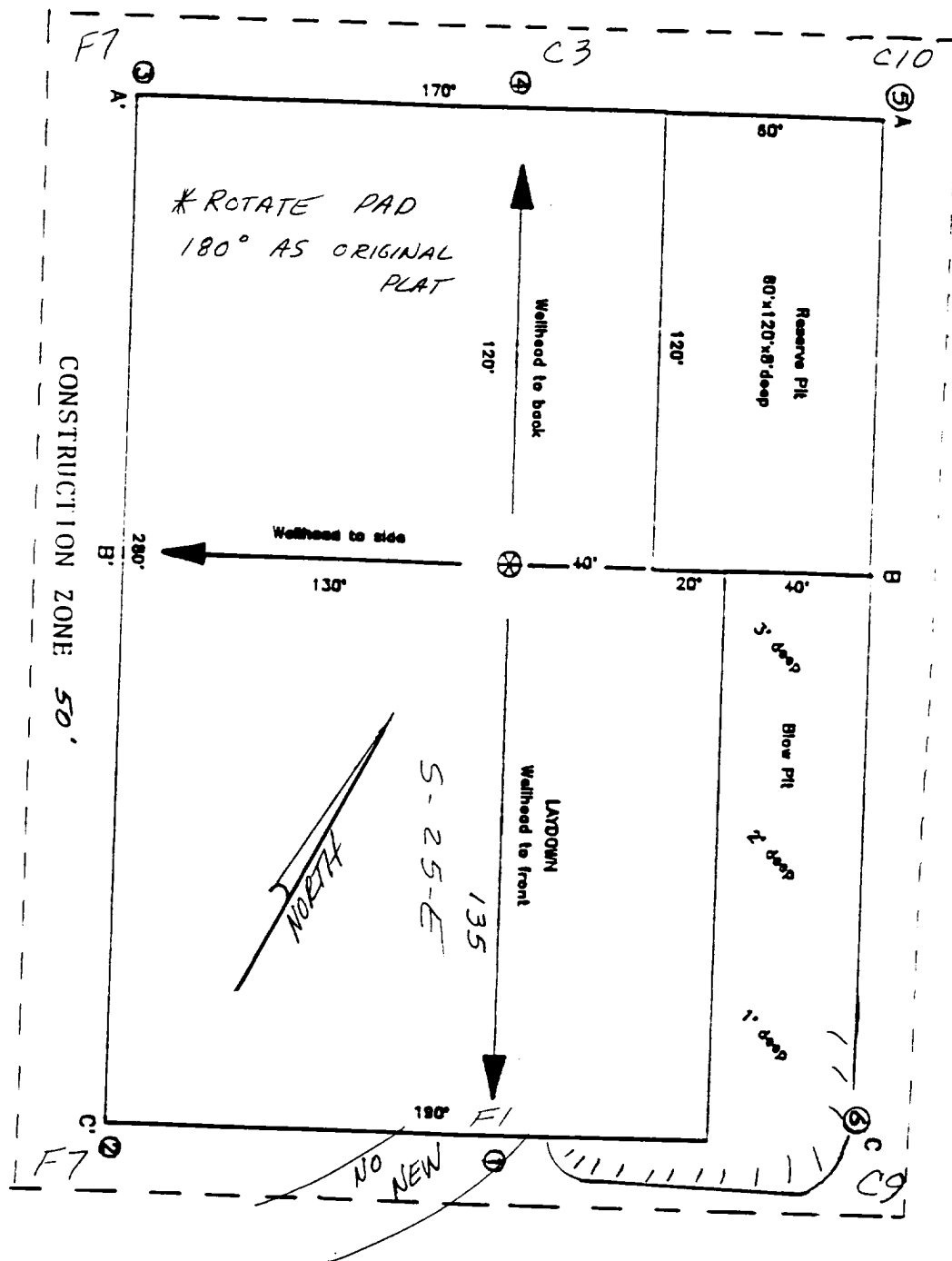
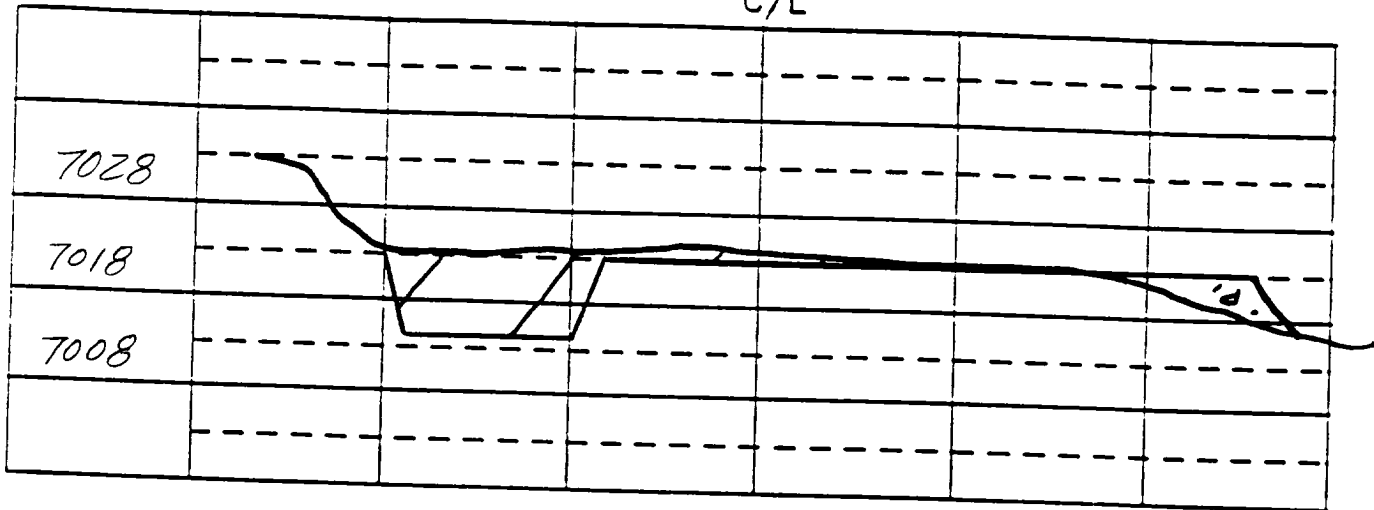


EXHIBIT: _____	
Name: <u>MOI ROSA UNIT #308</u>	
Footage: <u>1850 FSL 880 FWL</u>	
Sec <u>24</u> T- <u>31</u> -N, R- <u>4</u> -W NMPM	
Co. <u>RIO ARRIBA</u>	St. <u>NM</u>
Elevation: <u>7018'</u>	Date: <u>10-10-90</u>

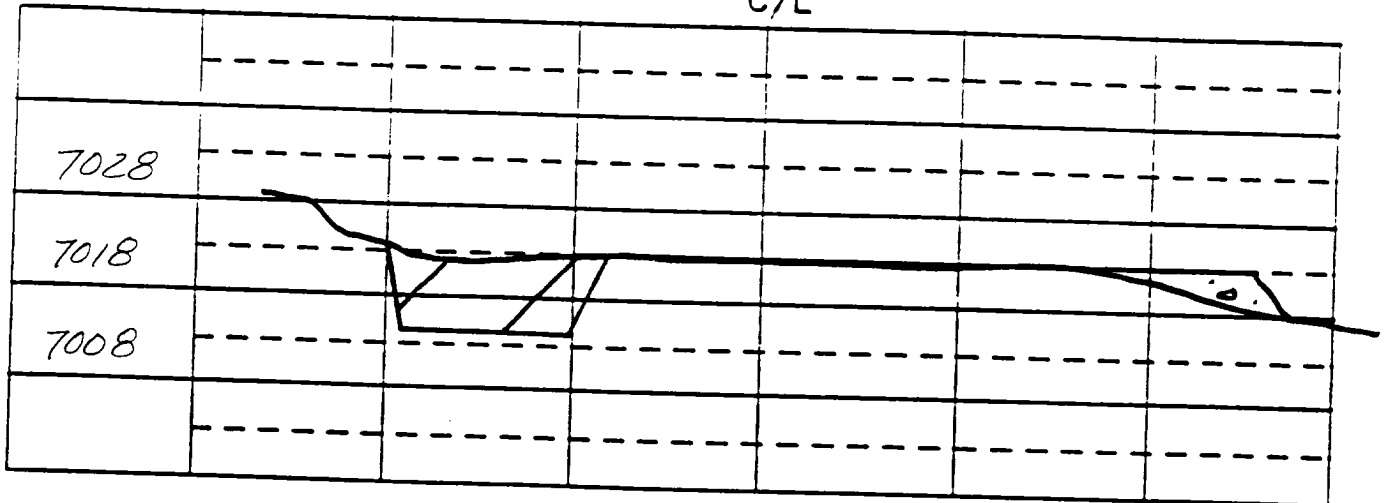
A - A' Vert.:1" = 20' Horiz.:1" = 50'

C/L



B - B'

C/L



C - C'

C/L

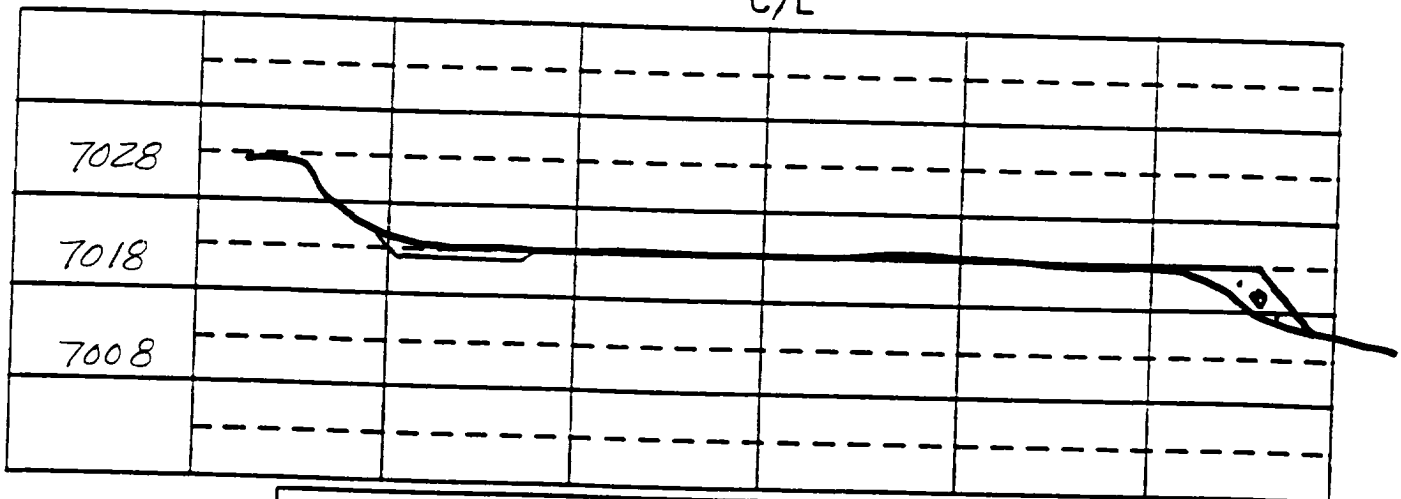


EXHIBIT:

Name: MOI ROSA UNIT #308

Footage: 1850 FSL 880 FWL

Sec 24 T- 31 -N,R- 4 -W NMPM

Co. RIO ARRIBA St. NM

Elevation: 7018 Date: 10-10-90

Plot XC
2/4/90