

UNITED STATES  
DEPARTMENT OF THE INTERIOR  
BUREAU OF LAND MANAGEMENT

30-039-24945

APPLICATION FOR PERMIT TO DRILL, DEEPEN, OR PLUG BACK

1a. TYPE OF WORK

DRILL ☒

DEEPEN ☐

PLUG BACK ☐

b. TYPE OF WELL

OIL  
WELL ☐

GAS  
WELL ☒

OTHER

SINGLE  
ZONE ☒

MULTIPLE  
ZONE ☐

2. NAME OF OPERATOR

Phillips Petroleum Company

3. ADDRESS OF OPERATOR

300 W. Arrington, Suite 200, Farmington, NM 87401

4. LOCATION OF WELL (Report location clearly and in accordance with any State requirements.)\*

At surface

Unit L, 1418' FSL & 1147' FWL

At proposed prod. zone

Unit L, 1418' FSL & 1147' FWL

14. DISTANCE IN MILES AND DIRECTION FROM NEAREST TOWN OR POST OFFICE\*

15. DISTANCE FROM PROPOSED\*

LOCATION TO NEAREST

PROPERTY OR LEASE LINE, FT.

(Also to nearest drlg. unit line, if any) 1147' FWL

18. DISTANCE FROM PROPOSED LOCATION\*

TO NEAREST WELL, DRILLING, COMPLETED,

OR APPLIED FOR, ON THIS LEASE, FT. 346' from #24

16. NO. OF ACRES IN LEASE

2560

17. NO. OF ACRES ASSIGNED

TO THIS WELL

320 AC W/2 of Section

19. PROPOSED DEPTH

3315' (+)

20. ROTARY OR CABLE TOOLS

Rotary

21. ELEVATIONS (Show whether DF, RT, GR, etc.)

6448' (GL Unprepared)

5. LEASE DESIGNATION AND SERIAL NO.

SF-078999

6. IF INDIAN, ALLOTTEE OR TRIBE NAME

7. UNIT AGREEMENT NAME

San Juan 31-6 Unit

8. FARM OR LEASE NAME

9. WELL NO.

231

10. FIELD AND POOL, OR WILDCAT

Basin Fruitland Coal Gas

11. SEC., T., R., M., OR BLK.  
AND SURVEY OR AREA

Sec. 27, T-31-N, R-6-W

12. COUNTY OR PARISH

13. STATE

Rio Arriba

NM

23. PROPOSED CASING AND CEMENTING PROGRAM

| SIZE OF HOLE | SIZE OF CASING | WEIGHT PER FOOT | SETTING DEPTH | QUANTITY OF CEMENT       |
|--------------|----------------|-----------------|---------------|--------------------------|
| 12-1/4"      | 9-5/8"         | 36#, K-55       | 250'          | 250 sxs, Circ to Surface |
| 8-3/4"       | 7"             | 23#, K-55       | 3080'         | 650 sxs, Circ to Surface |
| 6-1/8"       | 5-1/2"         | 15.5# or 23#    | 2980'-3315'   | *                        |

\*If the coal is cleated, a 5-1/2", 23#, P-110 liner will be run in the open hole without being cemented.

\*If the coal is not cleated, the well will be stimulated and a 5-1/2", 15.5#, J-55 liner will be run without being cemented.

RECEIVED  
OCT 1 1990  
OIL CON. DIV.  
DIST. 3

Mud Program and BOP Equipment: See Attached

IN ABOVE SPACE DESCRIBE PROPOSED PROGRAM: If proposal is to deepen or plug back, give data on present productive zone and proposed new productive zone. If proposal is to drill or deepen directionally, give pertinent data on subsurface locations and measured and true vertical depths. Give blowout preventer program, if any.

24.

SIGNED

*L.M. Sanders*

TITLE

Supv. Regulatory Affairs

DATE

8/24/90

(This space for Federal or State office use)

PERMIT NO.

APPROVAL DATE

APPROVED BY

TITLE

DATE

CONDITIONS OF APPROVAL, IF ANY:

*OK*

*John S. Keller*

\*See Instructions On Reverse Side

Title 18 U.S.C. Section 1001, makes it a crime for any person knowingly and willfully to make to any department or agency of the United States any false, fictitious or fraudulent statements or representations as to any matter within its jurisdiction.

Submit to Appropriate  
District Office  
State Lease - 4 copies  
Fee Lease - 3 copies

Energy, Minerals and Natural Resources Department

# OIL CONSERVATION DIVISION

P.O. Box 2088

Santa Fe, New Mexico 87504-2088

RECEIVED  
OCT 1 1990

OCT 1 1990

DISTRICT I  
P.O. Box 1980, Hobbs, NM 88240

DISTRICT II  
P.O. Drawer DD, Artesia, NM 88210

DISTRICT III  
1000 Rio Brazos Rd., Aztec, NM 87410

## WELL LOCATION AND ACREAGE DEDICATION PLAT

All Distances must be from the outer boundaries of the section

|  |   |                            |                                     |  |                        |
|--|---|----------------------------|-------------------------------------|--|------------------------|
| Operator<br><b>PHILLIPS PETROLEUM</b>  |   |                            | Lease<br><b>SAN JUAN 31-6 UNIT</b>  |  | Well No.<br><b>231</b> |
| Unit Letter<br><b>L</b>  | Section<br><b>27</b>                    | Township<br><b>T.31 N.</b> | Range<br><b>R.6 W.</b>              | County<br><b>RIO ARriba COUNTY</b>     | NMPM                   |
| Actual Footage Location of Well:<br><b>1418</b> feet from the <b>SOUTH</b> line and <b>1147</b> feet from the <b>WEST</b> line |   |                            |                                     |  |                        |
| Ground level Elev.<br><b>6448</b>  | Producing Formation<br><b>Fruitland</b> |                            | Pool<br><b>Basin Fruitland Coal</b> | Dedicated Acreage:<br><b>320</b> Acres |                        |

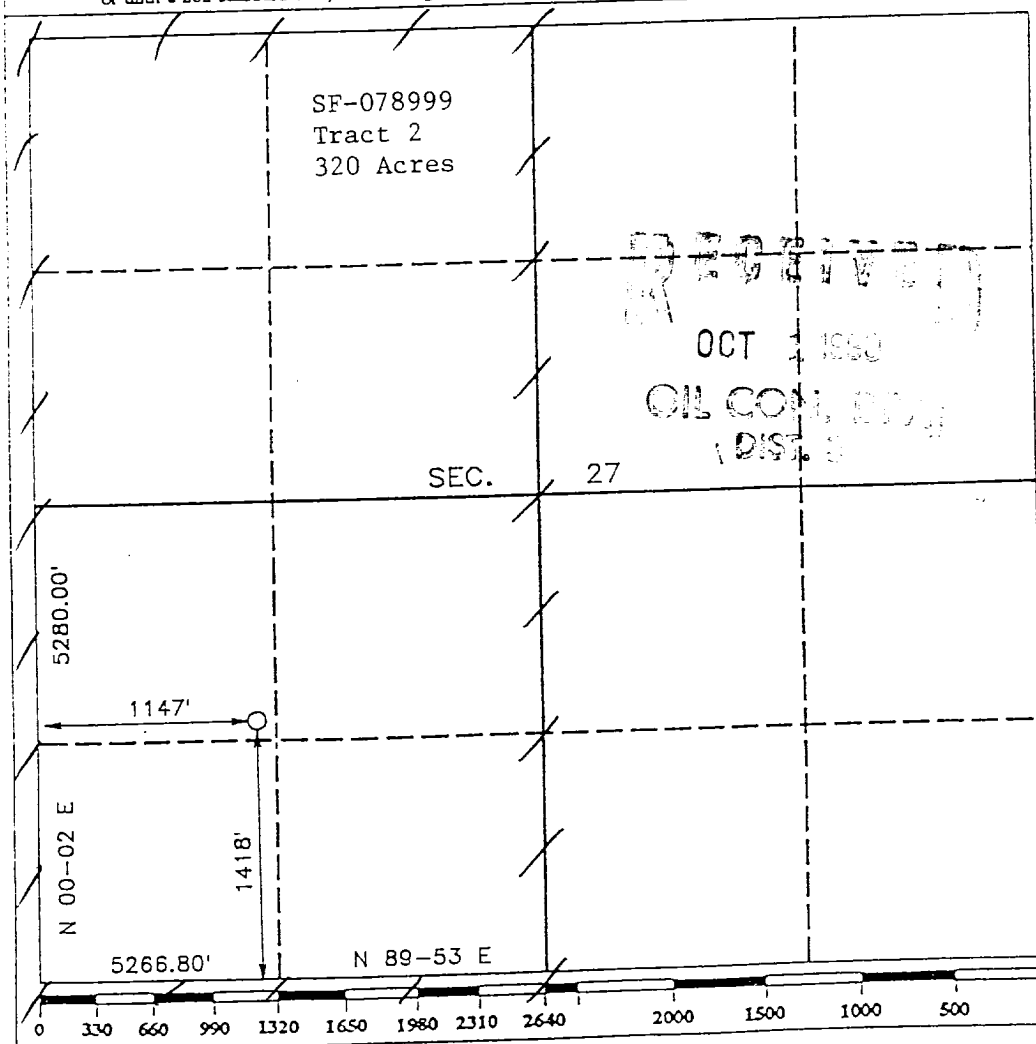
1. Outline the acreage dedicated to the subject well by colored pencil or hatchure marks on the plat below.

2. If more than one lease is dedicated to the well, outline each and identify the ownership thereof (both as to working interest and royalty).

3. If more than one lease of different ownership is dedicated to the well, have the interest of all owners been consolidated by communization, unitization, force-pooling, etc.?

☒ Yes ☐ No If answer is "yes" type of consolidation Unitization  
If answer is "no" list the owners and tract descriptions which have actually been consolidated. (Use reverse side of this form if necessary.)

No allowable will be assigned to the well until all interests have been consolidated (by communization, unitization, forced-pooling, or otherwise) or until a non-standard unit, eliminating such interest, has been approved by the Division.



### OPERATOR CERTIFICATION

I hereby certify that the information contained herein is true and complete to the best of my knowledge and belief.

Signature L. M. Sanders  
Printed Name L. M. Sanders  
Position Supv., Regulatory Affairs  
Company Phillips Petroleum Company  
Date 8/24/90

### SURVEYOR CERTIFICATION

I hereby certify that the well location shown on this plat was plotted from field notes of actual surveys made by me or under my supervision, and that the same is true and correct to the best of my knowledge and belief.

Date Surveyed AUGUST 1 1990  
Signature & Seal of Professional Surveyor R. HOWARD DAGGETT  
Certificate No. 9878  
Registered Professional Land Surveyor