

UNITED STATES
DEPARTMENT OF THE INTERIOR
BUREAU OF LAND MANAGEMENT

(Other instructions on
reverse side)

Budget Bureau No. 1004-0136
Expires August 31, 1985

APPLICATION FOR PERMIT TO DRILL, DEEPEN, OR PLUG BACK

1a. TYPE OF WORK

DRILL ☒

DEEPEN ☐

PLUG BACK ☐

b. TYPE OF WELL

OIL
WELL ☐

GAS
WELL ☒

OTHER

SINGLE
ZONE ☒

MULTIPLE
ZONE ☐

2. NAME OF OPERATOR

Phillips Petroleum Company

3. ADDRESS OF OPERATOR

300 W. Arrington, Suite 200, Farmington, NM 87401

4. LOCATION OF WELL (Report location clearly and in accordance with any State requirements.)

At surface

Unit G, 1999' FNL & 1280' FEL

At proposed prod. zone

Unit G, 1999' FNL & 1280' FEL

14. DISTANCE IN MILES AND DIRECTION FROM NEAREST TOWN OR POST OFFICE*

15. DISTANCE FROM PROPOSED*

LOCATION TO NEAREST
PROPERTY OR LEASE LINE, FT.

(Also to nearest drlg. unit line, if any) 1280' FEL

16. NO. OF ACRES IN LEASE

2560 Acres

18. DISTANCE FROM PROPOSED LOCATION*

TO NEAREST WELL, DRILLING, COMPLETED,
OR APPLIED FOR, ON THIS LEASE, FT.

441' from #23

19. PROPOSED DEPTH

3380' ±

17. NO. OF ACRES ASSIGNED
TO THIS WELL

320 AC E/2 of Section

20. ROTARY OR CABLE TOOLS

Rotary

21. ELEVATIONS (Show whether DF, RT, GR, etc.)

6515' (GL Unprepared)

22. APPROX. DATE WORK WILL START*

Upon Approval

23.

PROPOSED CASING AND CEMENTING PROGRAM

SIZE OF HOLE	SIZE OF CASING	WEIGHT PER FOOT	SETTING DEPTH	QUANTITY OF CEMENT
12-1/4"	9-5/8"	36#, K-55	250'	250 sxs, Circ to Surface
8-3/4"	7"	23#, K-55	3130'	650 sxs, Circ to Surface
6-1/8"	5-1/2"	15.5# or 23#	3030'-3380'	*

*If the coal is cleated, a 5-1/2", 23#, P-110 liner will be run in the open hole without being cemented.

*If the coal is not cleated, the well will be stimulated and a 5-1/2", 15.5#, J-55 liner will be run without being cemented.

Mud Program and BOP Equipment: See Attached

IN ABOVE SPACE DESCRIBE PROPOSED PROGRAM: If proposal is to deepen or plug back, give data on present productive zone and proposed new productive zone. If proposal is to drill or deepen directionally, give pertinent data on subsurface locations and measured and true vertical depths. Give blowout preventer program, if any.

24.

SIGNED

L.M. Sanders

TITLE

Supv. Regulatory Affairs

DATE

8-24-90

(This space for Federal or State office use)

PERMIT NO.

APPROVAL DATE

APPROVED BY

TITLE

CONDITIONS OF APPROVAL, IF ANY:

*See Instructions On Reverse Side

Title 18 U.S.C. Section 1001, makes it a crime for any person knowingly and willfully to make to any department or agency of the United States any false, fictitious or fraudulent statements or representations as to any matter within its jurisdiction.

Submit to Appropriate
District Office
State Lease - 4 copies
Fee Lease - 3 copies

State of New Mexico
Energy, Minerals and Natural Resources Department

Form C-102
Revised 1-1-89

OIL CONSERVATION DIVISION

P.O. Box 2088
Santa Fe, New Mexico 87504-2088

DISTRICT I
P.O. Box 1980, Hobbs, NM 88240

DISTRICT II
P.O. Drawer DD, Artesia, NM 88210

DISTRICT III
1000 Rio Brazos Rd., Aztec, NM 87410

WELL LOCATION AND ACREAGE DEDICATION PLAT

All Distances must be from the outer boundaries of the section

Operator PHILLIPS PETROLEUM		Lease SAN JUAN 31-6 UNIT		Well No. 218
Unit Letter H	Section 34	Township 1.31 N.	Range R.6 W.	County RIO ARriba COUNTY
Actual Footage Location of Well: 1999 feet from the NORTH line and 1280 feet from the EAST line				
Ground level Elev. 6515	Producing Formation Fruitland	Pool Basin Fruitland		Dedicated Acreage: 320 Acres

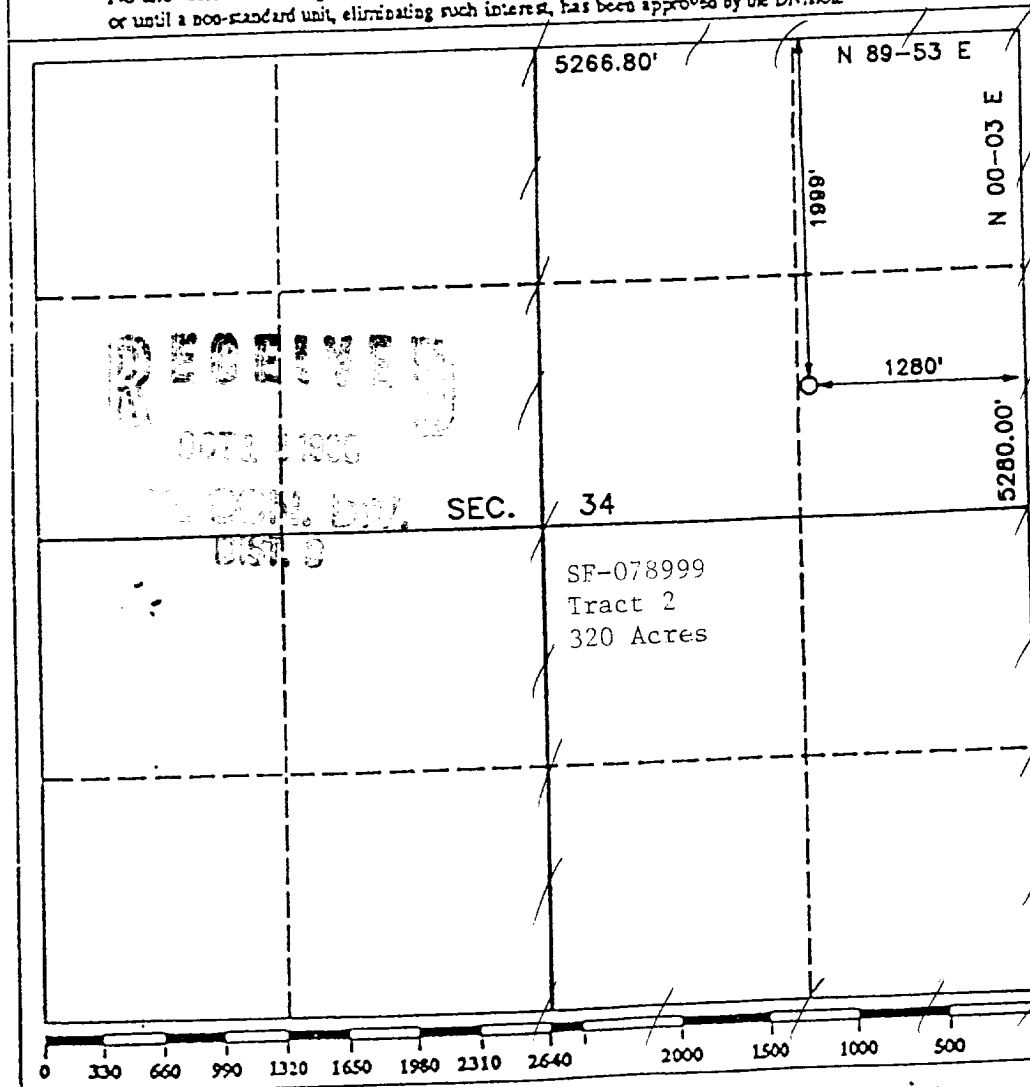
1. Outline the acreage dedicated to the subject well by colored pencil or hatchure marks on the plat below.

2. If more than one lease is dedicated to the well, outline each and identify the ownership thereof (both as to working interest and royalty).

3. If more than one lease of different ownership is dedicated to the well, have the interest of all owners been consolidated by communitization, unitization, force-pooling, etc.?

☒ Yes ☐ No If answer is "yes" type of consolidation Unitization
If answer is "no" list the owners and tract descriptions which have actually been consolidated. (Use reverse side of this form if necessary.)

No allowable will be assigned to the well until all interests have been consolidated (by communitization, unitization, forced-pooling, or otherwise) or until a non-standard unit, eliminating such interest, has been approved by the Division.



OPERATOR CERTIFICATION

I hereby certify that the information contained herein is true and complete to the best of my knowledge and belief.

Signature
L. M. Sanders
Printed Name
L. M. Sanders
Position
Supv., Regulatory Affairs
Company
Phillips Petroleum Company
Date
August 24, 1990

SURVEYOR CERTIFICATION

I hereby certify that the well location shown on this plat was plotted from field notes actual surveys made by me or under my supervision, and that the same is true and correct to the best of my knowledge and belief.

Date Surveyed
August 24, 1990
Signature of Registered Professional Land Surveyor
R. Howard Daggert
Certificate No.
9679
Registered Professional Land Surveyor