

UNITED STATES
DEPARTMENT OF INTERIOR
BUREAU OF LAND MANAGEMENT

FORM APPROVED
Budget Bureau No. 1004-0135
Expires: March 31, 1993

SUNDRY NOTICE AND REPORTS ON WELLS

Do not use this form for proposals to drill or to deepen or reentry to a different reservoir. Use "APPLICATION TO DRILL" for permit for such proposals

RECEIVED

98 OCT 19 PM 1:48

SUBMIT IN TRIPLICATE

070 FARMINGTON, NM

1. Type of Well
☐ Oil Well ☒ Gas Well ☐ Other

2. Name of Operator
WILLIAMS PRODUCTION COMPANY

3. Address and Telephone No.
PO BOX 3102 MS 37-4, TULSA, OK 74101 (918) 588-4592

4. Location of Well (Footage, Sec., T., R., M., or Survey Description)
2510' FNL & 890' FEL, SE/4 NE/4 SEC 21-31N-5W

5. Lease Designation and Serial No.
SF-078769

If Indian, Allottee or Tribe Name

If Unit or CA, Agreement Designation
ROSA UNIT

8. Well Name and No.
ROSA UNIT #262

9. API Well No.
30-039-24982

10. Field and Pool, or Exploratory Area
BASIN FRUITLAND COAL

11. County or Parish, State
RIO ARRIBA, NM

CHECK APPROPRIATE BOX(S) TO INDICATE NATURE OF NOTICE, REPORT, OR OTHER DATA

TYPE OF SUBMISSION

- ☐ Notice of Intent
☒ Subsequent Report
☐ Final Abandonment

TYPE OF ACTION

- ☐ Abandonment
☐ Recompletion
☐ Plugging Back
☐ Casing Repair
☐ Altering Casing
☒ Other Cavitation

- ☐ Change of Plans
☐ New Construction
☐ Non-Routine Fracturing
☐ Water Shut-Off
☐ Conversion to Injection
☐ Dispose Water
(Note: Report results of multiple completion on Well Completion or Recompletion Report and Log form.)

13. Describe Proposed or Completed Operations (Clearly state all pertinent details, and give pertinent dates, including estimated date of starting any proposed work. If well is directionally drilled, give subsurface locations and measured and true vertical depths for all markers and zones pertinent to this work.)*

9-05-1998 Rig down on Rosa Unit #233. Move on location and rig up. Pressure test BOP stack and HCR valves to 2000#/2 mins and 200#/10 mins.

9-06-1998 Finish rigging up, LD 2-3/8" tubing, strap DC's and DP, TIH w/ TIW liner retrieving tool, screw into liner and TOH. TIH w/ under reamer, 6 DC's and DP, under ream 6 1/4" hole to 9 1/2"

9-07-1998 Finish under reaming, circulate hole clean, COOH, LD under reamer, TIH w/ 6 1/4" bit, tag 50' fill, CO to TD, dry well, flow test through 3/4" choke (avg 24 mcf/d), SI pressure test, 90 min SI-140 psi, surge well 9 times w/ air and wtr to 1750 psi, returns-coal fines in dark gray wtr.

9-08-1998 Surge once w/ air and wtr to 1700 psi, returns-coal fines in dark gray wtr, TIH, tag @ 3318', CO to TD w/ 1800 scf air and 5 bbl wtr mist per hr, returns-med to lite 1/4" coal reducing to lite fines in gray wtr, dry well, flow test through 3/4" choke (ave 50 mcf/d), surge well 5 times w/ air and wtr to 1750 psi, returns-lite coal fines in black wtr

9-09-1998 Surge well 6 times w/ air and wtr to 1750 psi, returns-3/4" coal and shale and coal dust in black wtr, TIH, CO bridge 3292'-3412', returns-hvy 3/8" coal and shale (80/20) to coal fines in black wtr, CO @ TD-3412', returns-hvy 1/4" coal and shale (80/20) in black wtr reducing to lite 1/8" coal to fines in gray wtr, dry well for flow test

Continued on reverse Side.

14. I hereby certify that the foregoing is true and correct

Signed SUSAN GRIGUHN *S Griguhn*

Title CLERK

Date October 15, 1998

(This space for Federal or State office use)

Approved by _____

Title _____

Date _____

Conditions of approval, if any:

ACCEPTED FOR RECORD

OCT 22 1998

Title 18 U.S.C. Section 1001, makes it a crime for any person knowingly and willfully to make to any department or agency of the United States any false, fictitious or fraudulent statements or representations as to any matter within its jurisdiction.

FARMINGTON DISTRICT OFFICE

9-10-1998 Dry well, LD 6 jts DP, flow test through 3/4" choke (ave 36 mcf/d), surge well 7 times w/ air and wtr to 1700 psi, returns-hvy coal fines and gray wtr, TIH, tag fill @ 3320', CO to TD, returns-hvy 1/2" reducing to 1/4" coal to fines in black to gray wtr

9-11-1998 CO @ TD-3412' w/ 1800 scf air and 5-15 bbl wtr mist per hr w/ 5 bbl wtr sweeps hourly, returns-hvy 1/4" coal and shale (90/10) to fines in gray wtr, returns reducing to lite by 0500 hrs, dry well for flow test

9-12-1998 Dry well, flow test through 3/4" choke (ave 102 mcf/d), COOH, surge well 4 times w/ air and wtr 1550 psi, returns-coal pieces in black wtr, TIH, tag bridge 746', CO bridge 746'-896', TIH, tag 3397', CO 3397'-3412' w/ 1800 scf air and 10 bbl wtr per hr, returns-1/4" coal and shale (90/10) to fines in black wtr, hole tight, LD 1 jt DP, CO 3357'-3385' w/ same as above, same returns

9-13-1998 CO 3353'-4312' w/ 1800 scf air and 10 bbl wtr per hr, returns-hvy 1/4" coal to hvy fines in black viscous wtr

9-14-1998 CO bottom 90' of well bore, well making hvy coal fines in black wtr, estimate gas flare to be 350 mcf/d-500 mcf/d

9-15-1998 CO @ TD w/ 1800 scf air and 2-5 bbl wtr mist per hr, returns-hvy coal fines in gray to black wtr, tight hole, LD 1 jt DP, CO as above, CO @ TD, returns reducing to med coal fines in gray to black wtr, dry well, flow test through 3/4" choke (avg 544 mcf/d)

9-16-1998 COOH, surge well 5 times w/ air and wtr to 1375 psi, took 3 hrs to build pressure on each surge, returns-hvy coal in black wtr, TIH, CO bridge @ 3329', tag fill @ 3360', CO 3360'-3385' w/ 1800 scf air and 5 bbl wtr mist per hr, returns-hvy 1/4" coal to fines in 4" stream of black wtr

9-17-1998 CO bottom 52' of well bore, could CO @ TD then hole would get tight, had to LD 1 jt DP twice and third time hole got tight, pipe was stuck, work pipe free, CO 3353'-3385', returns-hvy to med 1/4" coal and shale (90/10) to fines in dark to gray wtr reducing to med to lite 1/8" coal and shale (90/10) to fines in gray wtr. Well made approximately 250 bbl wtr past 24 hrs

9-18-1998 CO 3353'-3412' w/ 1800 scf air and 5 bbl wtr mist per hr, returns-med to lite coal and shale (90/10) in gray wtr, dry well, flow test through 3/4" choke (ave 622 mcf/d), COOH, surge well 4 times w/ air and wtr to 1400 psi, returns-hvy coal in black wtr, fourth surge bridged in BOP

9-19-1998 Well bridged in BOP and near surface on last surge, broke up bridge w/ air and wtr, TIH, tag @ 3330', CO 3324'-3353', CO 3324'-3353' w/ 1800 scf air and 5 bbl wtr mist per hr, returns-hvy 1/8" coal and shale (90/10) to fines in dark gray wtr, CO 3353'-3385' w/ 900 scf air and 2 bbl wtr mist per hr, returns-med 1/8" coal and shale (90/10) to fines in gray wtr. One compressor down for 10 hrs, a mechanic had to come from Grand Junction to repair

9-20-1998 CO 3358' to 3385'. Returns are heavy 1/8" coal and shale (90/10) to fines in gray water. CO to TD, tight hole. LD 1 jt DP. CO 3358' to 3385', same returns. Dry well and flow test, avg = 1102 MCF/D.

9-21-1998 Finish flow test readings, ave flow rate-1102 mcf/d, TIH, tag fill @ 3370', CO 3385'-3412' w/ 1800 scf air and 5 bbl wtr mist per hr, returns-hvy 1/8" coal and shale to fines in gray wtr

9-22-1998 CO 3385'-3412', returns reducing to lite 1/8" coal and shale (90/10) to fines in gray wtr, dry well and flow test through 3/4" choke for 90 min, (ave 729 mcf/d), COOH, surge 4 times w/ 3 hr natural buildup, max pressure-510 psi, returns on surges-large coal to fines in black viscous wtr, 4" stream of wtr reducing to 1" stream in 30 min, TIH CO bridge @ 280', tag fill @ 3324', CO 3324'-3353' w/ 1800 scf air and 5 bbl wtr mist per hr, returns-hvy 1/8" coal and shale (90/10) to fines in black wtr

9-23-1998 CO 3324' to 3412' w/ air and wtr, returns-reducing to lite 1/8" coal in gray wtr, dry well, flow test through 3/4" choke, (avg 595 mcf/d), TIH, tag @ 3405', strap out of hole, change rams, RU to run liner, PU bit and bit sub and run 6 jts 5 1/2 casing.

9-24-1998 Wash liner to bottom, hang and release liner, ran 6 jts 5 1/2" casing, bottom 3 jts 17#, N-80 and top 3 jts 15.5#, K-55, w/ bit and bit sub on bottom, set @ 3410', TOL @ 3134', LD DP and DC's, perforate w/ Blue Jet 3286'-3320' & 3334'-3408' w/ 4 SPF, 0.71" holes, PU and run 108 jts 2 7/8" (3365.34') 6.5#, J-55, EUC8rd, yellow band tubing set @ 3378.34' w/ expendable check on bottom and 2.25" ID F-nipple @ 3345.40', land tubing, ND BOP, NUWH, pump off expendable check, rig down, rig released 0600 hrs 09/23/98

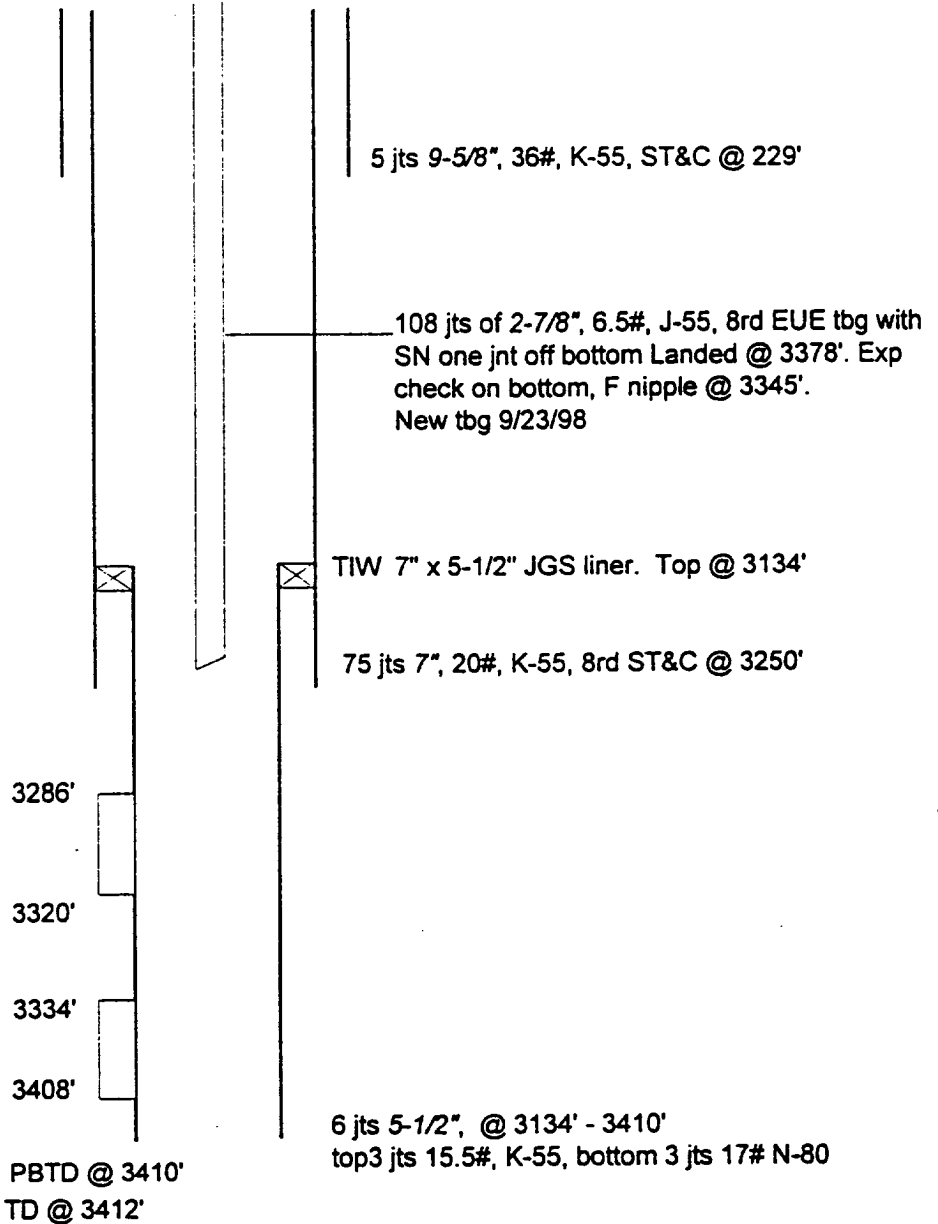
ROSA UNIT #262

FRUITLAND COAL

2510' FNL 890' FEL
SE/4 NE/4 SEC 21H T31N R5W
Ria Arriba Co, NM

Elevation: 6560' GL
KB 12'

Ojo Alamo 2735'
Kirtland 2850'
Fruitland 3195'



HOLE SIZE	CASING	CEMENT	TOP OF CMT
12-1/4"	9-5/8" 36#	160 sx	SURFACE
8-3/4"	7" 20#	700 sx	SURFACE
9-1/2" underreamed	5-1/2" 15.5# 17#	Did Not Cement	N/A