

UNITED STATES
DEPARTMENT OF THE INTERIOR
BUREAU OF LAND MANAGEMENT

30-039-25017

APPLICATION FOR PERMIT TO DRILL, DEEPEN, OR PLUG BACK

1a. TYPE OF WORK

DRILL ☒

DEEPEN ☐

PLUG BACK ☐

b. TYPE OF WELL

OIL
WELL ☐

GAS
WELL ☒

OTHER

SINGLE
ZONE ☐

MULTIPLE
ZONE ☐

2. NAME OF OPERATOR

Northwest Pipeline Corporation

3. ADDRESS OF OPERATOR

3539 East 30th Street - Farmington, NM 87402

4. LOCATION OF WELL (Report location clearly and in accordance with any State requirements.)*

At surface

1162' FNL & 1200' FEL NE/NE

At proposed prod. zone

Same

14. DISTANCE IN MILES AND DIRECTION FROM NEAREST TOWN OR POST OFFICE*

Approximately 20 miles north of Gobernador Camp

15. DISTANCE FROM PROPOSED*

LOCATION TO NEAREST
PROPERTY OR LEASE LINE, FT.
(Also to nearest drlg. unit line, if any)

1162'

16. NO. OF ACRES IN LEASE

2560

17. NO. OF ACRES ASSIGNED
TO THIS WELL

320 (E/2)

18. DISTANCE FROM PROPOSED LOCATION*

TO NEAREST WELL, DRILLING, COMPLETED,
OR APPLIED FOR, ON THIS LEASE, FT.

+ 4000'

19. PROPOSED DEPTH

3345'

20. ROTARY OR CABLE TOOLS

Rotary

21. ELEVATIONS (Show whether DF, RT, GR, etc.)

6507' GR

This action is subject to technical and
procedural review pursuant to 43 CFR 3185.3
and appeal pursuant to 43 CFR 3185.4
PROPOSED CASING AND CEMENTING PROGRAM

22. APPROX. DATE WORK WILL START*

October 1, 1990

23.

DRILLING OPERATIONS AUTHORIZED ARE
SUBJECT TO COMPLIANCE WITH ATTACHED
"GENERAL REQUIREMENTS"

SIZE OF HOLE	SIZE OF CASING	WEIGHT PER FOOT	SETTING DEPTH	QUANTITY OF CEMENT
13-1/2"	9-5/8"	36# K-55	200'	120 sx (143 cu.ft.)
8-3/4"	7"	23# K-55	3140'	335 sx (834 cu.ft.)
6-1/4"	5-1/2"	23# P110	3040' to 3345'	Open hole

1) Plan to drill Fruitland from 3171' to 3339' and set liner in open hole. If open hole proves unproductive, the 5-1/2" liner will be changed to 15.5# K-55, cemented and hydraulically stimulated as necessary.

2) The E/2 of Section 35 is dedicated to this well.

NOV 1 1990
OIL CON. DIV.
DIST. 3

IN ABOVE SPACE DESCRIBE PROPOSED PROGRAM: If proposal is to deepen or plug back, give data on present productive zone and proposed new productive zone. If proposal is to drill or deepen directionally, give pertinent data on subsurface locations and measured and true vertical depths. Give blowout preventer program, if any.

24. SIGNED Mark McCallister TITLE Sr. Prod. & Drlg. Engineer DATE 9-11-90
(This space for Federal or State office use)

PERMIT NO. _____ APPROVAL DATE _____

APPROVED BY _____ TITLE _____
CONDITIONS OF APPROVAL, IF ANY:

NMOCD

*See Instructions On Reverse Side

Submit to Appropriate
District Office
State Lease - 4 copies
Fee Lease - 3 copies

State of New Mexico
Energy, Minerals and Natural Resources Department

RECEIVED
Form C-102
Rev. 5-1-89

OIL CONSERVATION DIVISION

SEP 14 1990

P.O. Box 2088

Santa Fe, New Mexico 87504-2088

BUREAU OF LAND MANAGEMENT
FARMINGTON RESOURCE AREA

DISTRICT I
P.O. Box 1980, Hobbs, NM 88240

DISTRICT II
P.O. Drawer DD, Artesia, NM 88210

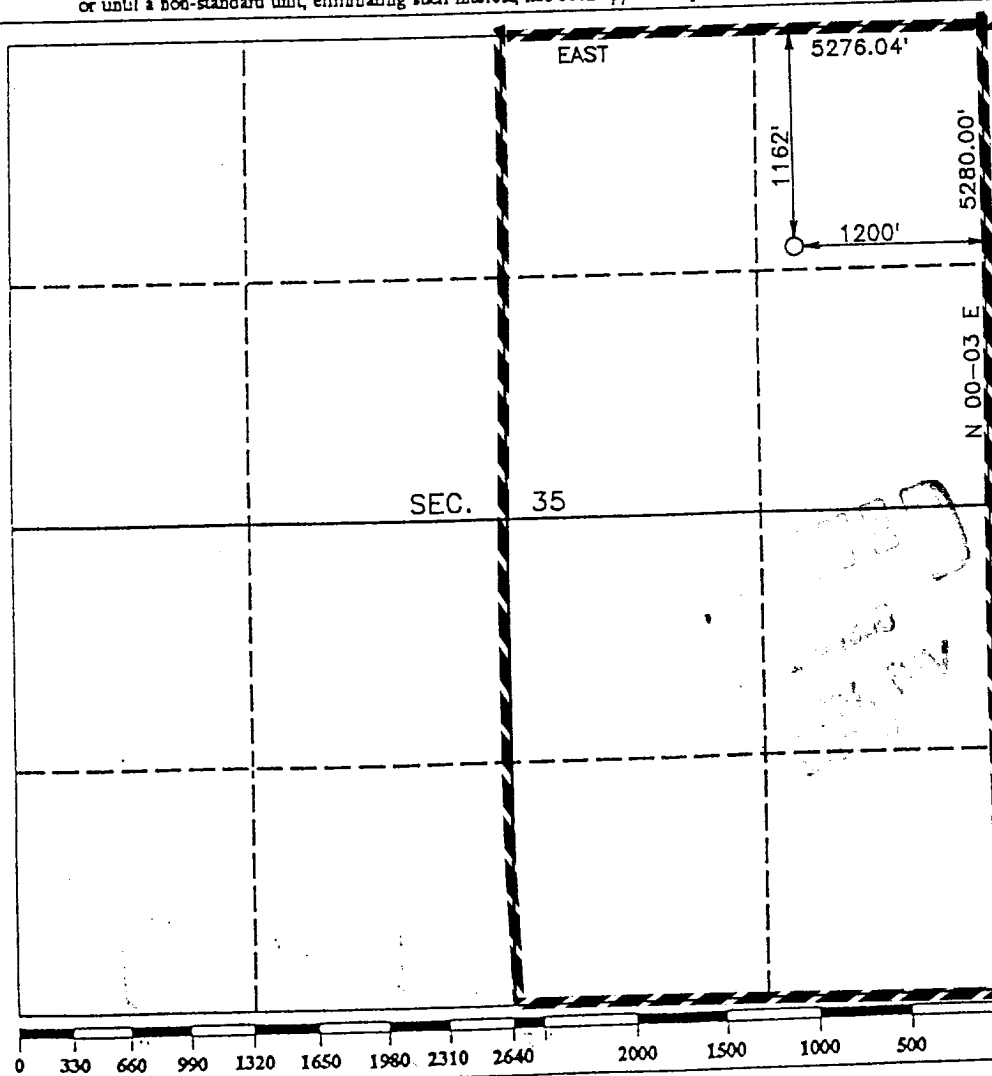
DISTRICT III
1000 Rio Brazos Rd., Aztec, NM 87410

WELL LOCATION AND ACREAGE DEDICATION PLAT

All Distances must be from the outer boundaries of the section

Operator NORTHWEST PIPELINE CORP.		Lease SAN JUAN 31-6 UNIT		Well No. 216
Unit Letter A	Section 35	Township T.31 N.	Range R.6 W.	County RIO ARriba COUNTY
Actual Footage Location of Well: 1162 feet from the NORTH line and 1200 feet from the EAST line				
Ground level Elev. 6507	Producing Formation Fruitland	Pool Basin Fruitland Coal	Dedicated Acreage: 320 Acres	

- Outline the acreage dedicated to the subject well by colored pencil or hatchure marks on the plat below.
- If more than one lease is dedicated to the well, outline each and identify the ownership thereof (both as to working interest and royalty).
- If more than one lease of different ownership is dedicated to the well, have the interest of all owners been consolidated by communitization, unitization, force-pooling, etc.?
☒ Yes ☐ No If answer is "yes" type of consolidation Unitized
If answer is "no" list the owners and tract descriptions which have actually been consolidated. (Use reverse side of this form if necessary.)
No allowable will be assigned to the well until all interests have been consolidated (by communitization, unitization, forced-pooling, or otherwise) or until a non-standard unit, eliminating such interest, has been approved by the Division.



OPERATOR CERTIFICATION
I hereby certify that the information contained herein is true and complete to the best of my knowledge and belief.

Signature
Mike Turnbaugh
Printed Name
Mike Turnbaugh
Position
Production Superintendent
Company
Northwest Pipeline Corp.
Date
9-10-90

SURVEYOR CERTIFICATION

I hereby certify that the well location shown on this plat was plotted from field notes of actual surveys made by me or under my supervision, and that the same is true and correct to the best of my knowledge and belief.

Date Surveyed
SEPTEMBER 4 1990
Signature & Seal of Registered Professional Land Surveyor
R. HOWARD DAGGETT

Certified
9879
Registered Professional Land Surveyor

