

UNITED STATES
DEPARTMENT OF THE INTERIORGEOLOGICAL SURVEY *30-039-25070*

APPLICATION FOR PERMIT TO DRILL, DEEPEN, OR PLUG BACK

1a. TYPE OF WORK

DRILL ☒DEEPEN ☐PLUG BACK ☐

b. TYPE OF WELL

OIL
WELL ☐GAS
WELL ☒

OTHER

SINGLE
ZONE ☒MULTIPLE
ZONE ☐

2. NAME OF OPERATOR

MITCHELL ENERGY CORPORATION

3. ADDRESS OF OPERATOR

555 Seventeenth Street - Suite 3500

Denver, CO 80202

4. LOCATION OF WELL (Report location clearly and in accordance with any State requirements.)*

At surface

2095' FNL & 2150' FEL Sec. 19-T31N-R4W

At proposed prod. zone

SAME

14. DISTANCE IN MILES AND DIRECTION FROM NEAREST TOWN OR POST OFFICE*

+61 miles northeast of Blanco, New Mexico

15. DISTANCE FROM PROPOSED*

LOCATION TO NEAREST
PROPERTY OR LEASE LINE, FT.
(Also to nearest drlg. unit line, if any)

2095'

16. NO. OF ACRES IN LEASE

2560 acres

18. DISTANCE FROM PROPOSED LOCATION*

TO NEAREST WELL, DRILLING, COMPLETED,
OR APPLIED FOR, ON THIS LEASE, FT.

1728'

19. PROPOSED DEPTH

4000'

21. ELEVATIONS (Show in feet and GR, etc.)

6631' GR

This action is subject to technical and
procedural review pursuant to 43 CFR 3165.3
and appeal pursuant to 43 CFR 3165.4.

5. LEASE DESIGNATION AND SERIAL NO.

SF078889

6. IF INDIAN, ALLOTTEE OR TRIBE NAME

NA

7. UNIT AGREEMENT NAME

Rosa

8. FARM OR LEASE NAME

Rosa Unit

9. WELL NO.

347

10. FIELD AND POOL, OR WILDCAT

*Fruitland Coal*11. SEC., T., R., W., OR BLE.
AND SURVEY OR AREAG
Sec. 19-T31N-R4W

12. COUNTY OR PARISH

Rio Arriba

13. STATE

NM.

PROPOSED CASING AND CEMENTING PROGRAM

SIZE OF HOLE	SIZE OF CASING	WEIGHT PER FOOT	SETTING DEPTH	GENERAL REQUIREMENTS
12-1/4"	8-5/8"	24# K-55	500'	350 sxs - circ to surface
7-7/8"	5-1/2"	15.5# K-55	4000'	700 sxs - est TOC @ 350' surface

The operator proposes to drill to a depth sufficient to test the Fruitland Formation. If productive, 5-1/2" casing will be run and set at $\pm 4000'$. If non-productive, the well will be plugged and abandoned consistent with Federal Regulations. Any zones above the Fruitland may be tested for productivity prior to Abandonment.

EXHIBITS ATTACHED

Ten Point Compliance Program

Surface Use & Operating Plan

Exhibit No. 1 Blowout Preventer Schematic

Exhibit No. 6 Production Facilities

Exhibit No. 2 Location Elevation Plat

Layout

Exhibit No. 3 Planned Access Roads

Exhibit No. 7 Drilling Rig Layout

Exhibit No. 4 Planned Pipeline Map

Exhibit No. 5 One Mile Radius Map

IN ABOVE SPACE DESCRIBE PROPOSED PROGRAM: If proposal is to deepen or plug back, give data on present productive zone and proposed new productive zone. If proposal is to drill or deepen directionally, give pertinent data on subsurface locations and measured and true vertical depths. Give blowout preventer program, if any.

24.

SIGNED

James C. Anderson
James C. Anderson

TITLE District Production Manager

DATE 7/31/90

(This space for Federal or State office use)

PERMIT

RECEIVED

APPROVAL DATE

**APPROVED
AS AMENDED**

APPROVED

CONDITIONS OF MAY 20 1991

TITLE

MAY 18 1991

AREA MANAGER

OIL CON. DIV.

DIST. 3

*See Instructions On Reverse Side

Submit to Appropriate
District Office
State Lease - 4 copies
Fee Lease - 3 copies

State of New Mexico
Energy, Minerals and Natural Resources Department

Form C-102
Revised 1-1-89

OIL CONSERVATION DIVISION

P.O. Box 2088
Santa Fe, New Mexico 87504-2088

DISTRICT I
P.O. Box 1980, Hobbs, NM 88240

DISTRICT II
P.O. Drawer DD, Artesia, NM 88210

DISTRICT III
1000 Rio Brazos Rd., Aztec, NM 87410

WELL LOCATION AND ACREAGE DEDICATION PLAT

All Distances must be from the outer boundaries of the section

Operator Mitchell Energy Corporation			Lease Rosa Unit		Well No. 347
Unit Letter G	Section 19	Township 31 North	Range 4 West	County NMPM	Rio Arriba
Actual Footage Location of Well: 2095 feet from the North line and 2150 feet from the East line					
Ground level Elev 6631	Producing Formation Fruitland Coal		Pool Basin Fst Coal	Dedicated Acreage: 320 226.53 Acres	

- Outline the acreage dedicated to the subject well by colored pencil or hatchure marks on the plat below.
- If more than one lease is dedicated to the well, outline each and identify the ownership thereof (both as to working interest and royalty).
- If more than one lease of different ownership is dedicated to the well, have the interest of all owners been consolidated by communitization, unitization, force-pooling, etc.?
☐ Yes ☐ No If answer is "yes" type of consolidation _____
If answer is "no" list the owners and tract descriptions which have actually been consolidated. (Use reverse side of this form if necessary.)
No allowable will be assigned to the well until all interests have been consolidated (by communitization, unitization, forced-pooling, or otherwise) or until a non-standard unit, eliminating such interest, has been approved by the Division.

2095'		2150'	
Section 19			
RECEIVED MAY 20 1991 OIL CON. DIV. DIST. 3			

OPERATOR CERTIFICATION

I hereby certify that the information contained herein is true and complete to the best of my knowledge and belief.

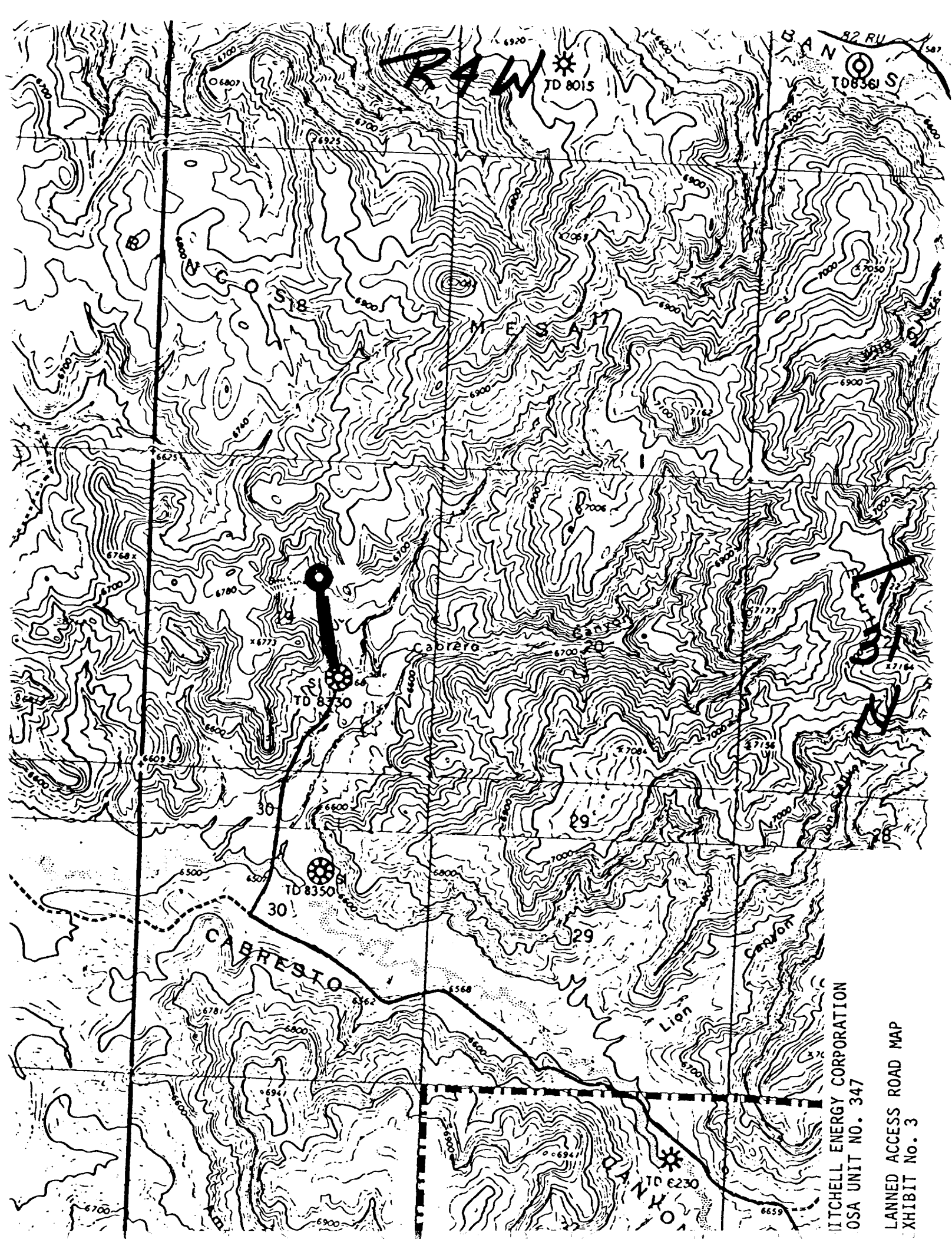
Signature
James C. Anderson
Printed Name
James C. Anderson
Position
District Production Mgr.
Company
Mitchell Energy Corp.
Date
7/31/90

SURVEYOR CERTIFICATION

I hereby certify that the well location shown on this plat was plotted from field notes of actual surveys made by me or under my supervision, and that the same is true and correct to the best of my knowledge and belief.

Date Surveyed
June 29, 1990

Signature & Seal of Professional Surveyor
Edgar L. Risenhoover
Edgar L. Risenhoover
3979
5919



ITCHELL ENERGY CORPORATION
OSA UNIT NO. 347

LANNED ACCESS ROAD MAP
XHIBIT No. 3