

UNITED STATES  
DEPARTMENT OF THE INTERIOR  
BUREAU OF LAND MANAGEMENT

30-039-25071

APPLICATION FOR PERMIT TO DRILL, DEEPEN, OR PLUG BACK

1a. TYPE OF WORK  
 DRILL  DEEPEN  PLUG BACK   
 b. TYPE OF WELL  
 OIL WELL  GAS WELL  OTHER   
 SINGLE ZONE  MULTIPLE ZONE   
 2. NAME OF OPERATOR  
 Robert L. Bayless 19418  
 3. ADDRESS OF OPERATOR  
 P. O. Box 168, Farmington, NM 87499  
 4. LOCATION OF WELL (Report location clearly and in accordance with any State requirements.)\*  
 At surface  
 1565' FSL & 1015' FWL  
 At proposed prod. zone  
 14. DISTANCE IN MILES AND DIRECTION FROM NEAREST TOWN OR POST OFFICE\*

5. LEASE DESIGNATION AND SERIAL NO.  
 Jic. Min. Devel. Agmt. 531  
 6. IF INDIAN, ALLOTTEE OR TRIBE NAME  
 Jicarilla Apache Tribe  
 7. UNIT AGREEMENT NAME  
 #701-90-0002  
 8. FARM OR LEASE NAME  
 Jicarilla 13869 31-3-6  
 9. WELL NO.  
 31-3-6-2  
 10. FIELD AND POOL, OR WILDCAT  
 Basin Fruitland Coal 71629  
 11. SEC., T., R., M., OR BLK. AND SURVEY OR AREA  
 Section 6, T. 31 N., R. 3  
 12. COUNTY OR PARISH  
 Rio Arriba  
 13. STATE  
 Nm

15. DISTANCE FROM PROPOSED\* LOCATION TO NEAREST PROPERTY OR LEASE LINE, FT. (Also to nearest drlg. unit line, if any)  
 16. NO. OF ACRES IN LEASE  
 287.91 2315.22  
 17. NO. OF ACRES ASSIGNED TO THIS WELL  
 258.41  
 5/ 287.91  
 18. DISTANCE FROM PROPOSED LOCATION\* TO NEAREST WELL, DRILLING, COMPLETED, OR APPLIED FOR, ON THIS LEASE, FT.  
 19. PROPOSED DEPTH  
 4150'  
 20. ROTARY OR CABLE TOOLS  
 Rotary  
 21. ELEVATIONS (Show whether DF, RT, GR, etc.)  
 6812' GL 6824' RKB  
 22. APPROX. DATE WORK WILL START\*  
 ASAP

23. PROPOSED CASING AND CEMENTING PROGRAM

SIZE OF HOLE	SIZE OF CASING	WEIGHT PER FOOT	SETTING DEPTH
12-1/4"	8-5/8"	24.0#	125'
7-7/8"	4-1/2"	10.5#	4150'

DRILLING OPERATIONS AUTHORIZED ARE SUBJECT TO COMPLIANCE WITH ATTACHED "GENERAL REQUIREMENTS" QUANTITY OF CEMENT 90 sx Class B (106 ft) 3 500 sx assorted cements - see long string cementing guidelines for details

Will drill 12-1/4" hole to 125' and set 125' of 8-5/8" 24.0#/ft J-55 used casing, cementing with 106 ft<sup>3</sup> Class B cement, circulated to surface. Will drill 7-7/8" hole to 4150' and run 4150' of 4-1/2" 10.5 #/ft J-55 new casing and cement as per attached longstring cementing guidelines. Circulating medium while drilling will be clear water, natural mud and waterloss control additives. No abnormal pressures or temperatures are anticipated. Will run Induction and Density Logs. Blowout preventer and safety equipment schematics are attached. The gas from this formation is not dedicated to a gas contract.

ESTIMATED TOPS:

Ojo Alamo	-	3080'
Kirtland	-	3190'
Fruitland	-	3400'
Upper P.C.	-	3650'
Lower P.C.	-	4000'
Total Depth		4150'

IN ABOVE SPACE DESCRIBE PROPOSED PROGRAM: If proposal is to deepen or plug-back, give data on present productive zone and proposed new productive zone. If proposal is to drill or deepen directionally, give pertinent data on subsurface locations and measured and true vertical depths. Give blowout preventer program, if any.

24. SIGNED Kevin H. McCord TITLE Petroleum Engineer APPROVAL DATE October 12, 1990  
 Kevin H. McCord

(This space for Federal or State office use)

AS AMENDED

PERMIT NO. **RECEIVED** APPROVAL DATE \_\_\_\_\_  
 APPROVED BY MAY 20 1991 TITLE \_\_\_\_\_  
 CONDITIONS OF APPLICABILITY \_\_\_\_\_  
 AREA MANAGER

OIL CON. DIV.  
DIST. 3

\*See Instructions On Reverse Side

State of New Mexico  
Energy, Minerals and Natural Resources Department

Form 6-102  
Revised 1-1-89

**OIL CONSERVATION DIVISION**

P.O. Box 2088  
Santa Fe, New Mexico 87504-2088

Appropriate District Office  
State Lease - 4 copies  
Fee Lease - 3 copies

**DISTRICT I**  
P.O. Box 1980, Hobbs, NM 88240

**DISTRICT II**  
P.O. Drawer DD, Artesia, NM 88210

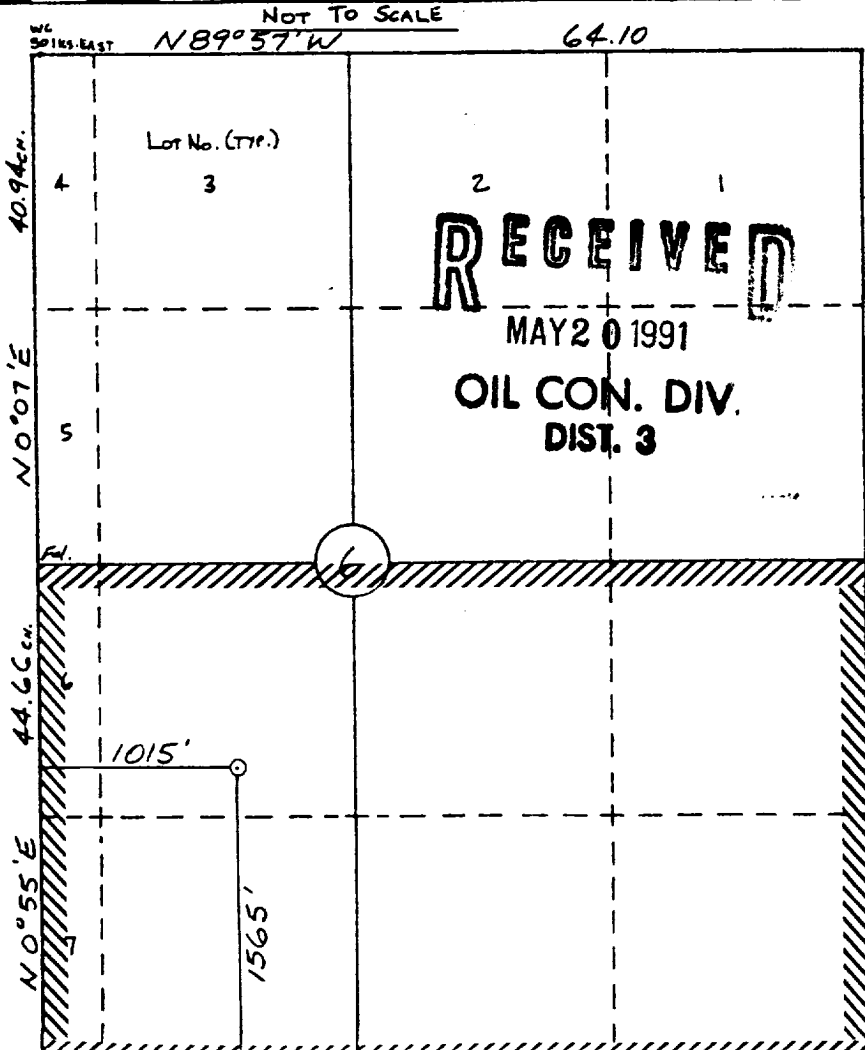
**DISTRICT III**  
1000 Rio Brazos Rd., Aztec, NM 87410

**WELL LOCATION AND ACREAGE DEDICATION PLAT**

All Distances must be from the outer boundaries of the section

RECEIVED  
MAIL ROOM  
OCT 12 PM 1:31

Operator <b>ROBERT L. BAYLESS</b>		Lease <b>JICARILLA 31-3-6</b>		Well No. <b>31-3-6-20</b>
Unit Letter <b>K</b>	Section <b>6</b>	Township <b>31 N</b>	Range <b>3 W</b>	County <b>Rio Arriba</b>
Actual Footage Location of Well: <b>1565</b> feet from the <b>South</b> line and <b>1015</b> feet from the <b>West</b> line				
Ground level Elev. <b>6812</b>	Producing Formation <b>Fruitland Coal</b>	Pool <b>Basin Fruitland Coal</b>	Dedicated Acreage: <b>287.91</b> <sup>253.41</sup> Acres	
<p>1. Outline the acreage dedicated to the subject well by colored pencil or hatchure marks on the plat below.</p> <p>2. If more than one lease is dedicated to the well, outline each and identify the ownership thereof (both as to working interest and royalty).</p> <p>3. If more than one lease of different ownership is dedicated to the well, have the interest of all owners been consolidated by communitization, unitization, force-pooling, etc.?  <input type="checkbox"/> Yes    <input type="checkbox"/> No    If answer is "yes" type of consolidation _____</p> <p>If answer is "no" list the owners and tract descriptions which have actually been consolidated. (Use reverse side of this form if necessary.)</p> <p>No allowable will be assigned to the well until all interests have been consolidated (by communitization, unitization, forced-pooling, or otherwise) or until a non-standard unit, eliminating such interest, has been approved by the Division.</p>				



**OPERATOR CERTIFICATION**

I hereby certify that the information contained herein is true and complete to the best of my knowledge and belief.

Signature: *Kevin H. McCord*

Printed Name: **Kevin H. McCord**

Position: **Petroleum Engineer**

Company: **Robert L. Bayless**

Date: **October 9, 1990**

---

**SURVEYOR CERTIFICATION**

I hereby certify that the well location shown on this plat was plotted from field notes of actual surveys made by me or under my supervision, and that the same is true and correct to the best of my knowledge and belief.

Date Surveyed: **10-4-90**

Signature & Seal of Professional Surveyor: **William M. Mahnke II**

Professional Surveyor Seal: **NEW MEXICO #8466**

1  
1  
~~60.00~~  
98.41  

---

258.41

160.66

1 98.41  
160.66  

---

258.41