

UNITED STATES
DEPARTMENT OF THE INTERIOR
BUREAU OF LAND MANAGEMENT NT

APPLICATION FOR PERMIT TO DRILL, DEEPEN, OR PLUG BACK

1a. TYPE OF WORK

DRILL ☒

DEEPEN ☐

PLUG BACK ☐

b. TYPE OF WELL

OIL
WELL ☐

GAS
WELL ☒

OTHER

SINGLE
ZONE ☒

MULTIPLE
ZONE ☐

2. NAME OF OPERATOR

Phillips Petroleum Company

3. ADDRESS OF OPERATOR

5525 Hwy 64 NBU 3004, Farmington, NM 87401

4. LOCATION OF WELL (Report location clearly and in accordance with any State requirements.)*

At surface

Unit J, 2126' FSL & 1751' FEL

At proposed prod. zone Same as above

14. DISTANCE IN MILES AND DIRECTION FROM NEAREST TOWN OR POST OFFICE*

25 Miles East From Blanco

10. DISTANCE FROM PROPOSED*

LOCATION TO NEAREST
PROPERTY OR LEASE LINE, FT.
(Also to nearest drlg. unit line, if any)

18. DISTANCE FROM PROPOSED LOCATION*
TO NEAREST WELL, DRILLING, COMPLETED,
OR APPLIED FOR, ON THIS LEASE, FT.

16. NO. OF ACRES IN LEASE

2560 Acres

19. PROPOSED DEPTH

8210'

17. NO. OF ACRES ASSIGNED
TO THIS WELL

320 Acres

20. ROTARY OR CABLE TOOLS

Rotary

21. ELEVATIONS (Show whether DF, RT, GR, etc.)

6518' (GL Unprepared)

22. APPROX. DATE WORK WILL START*

Upon Approval

23. PROPOSED CASING AND CEMENTING PROGRAM

SIZE OF HOLE	SIZE OF CASING	WEIGHT PER FOOT	SETTING DEPTH	QUANTITY OF CEMENT
12-1/4"	9-5/8"	36#, J-55	400'	220 Sx, Circ to Surface
8-3/4"	7"	23#, J-55	4000'	500 Sx, Circ to Surface
6-1/4"	4-1/2"	11.6#, N-80	8210'	470 Sx, First Stage
				350 Sx, Second Stage, Circ to Sur

RECEIVED

OCT 10 1991

OIL CON. DIV
DIST. 3

IN ABOVE SPACE DESCRIBE PROPOSED PROGRAM: If proposal is to deepen or plug back, give data on present productive zone and proposed new productive zone. If proposal is to drill or deepen directionally, give pertinent data on subsurface locations and measured and true vertical depths. Give blowout preventer program, if any.

24.

SIGNED

L. E. Robinson
L. E. Robinson

TITLE

Sr. Drlg. & Prod. Engr.

DATE

9-5-91

(This space for Federal or State office use)

PERMIT NO.

APPROVAL DATE

APPROVED
AS AMENDED

APPROVED BY

TITLE

CONDITIONS OF APPROVAL, IF ANY:

OCT 08 1991

AREA MANAGER

*See Instructions On Reverse Side

[illegible]

Submit to Appropriate
District Office
State Lease - 4 copies
Fee Lease - 3 copies

State of New Mexico
Energy, Minerals and Natural Resources Department

Form C-102
Revised 1-1-89

OIL CONSERVATION DIVISION

P.O. Box 2088
Santa Fe, New Mexico 87504-2088

DISTRICT I
P.O. Box 1980, Hobbs, NM 88240

DISTRICT II
P.O. Drawer DD, Artesia, NM 88210

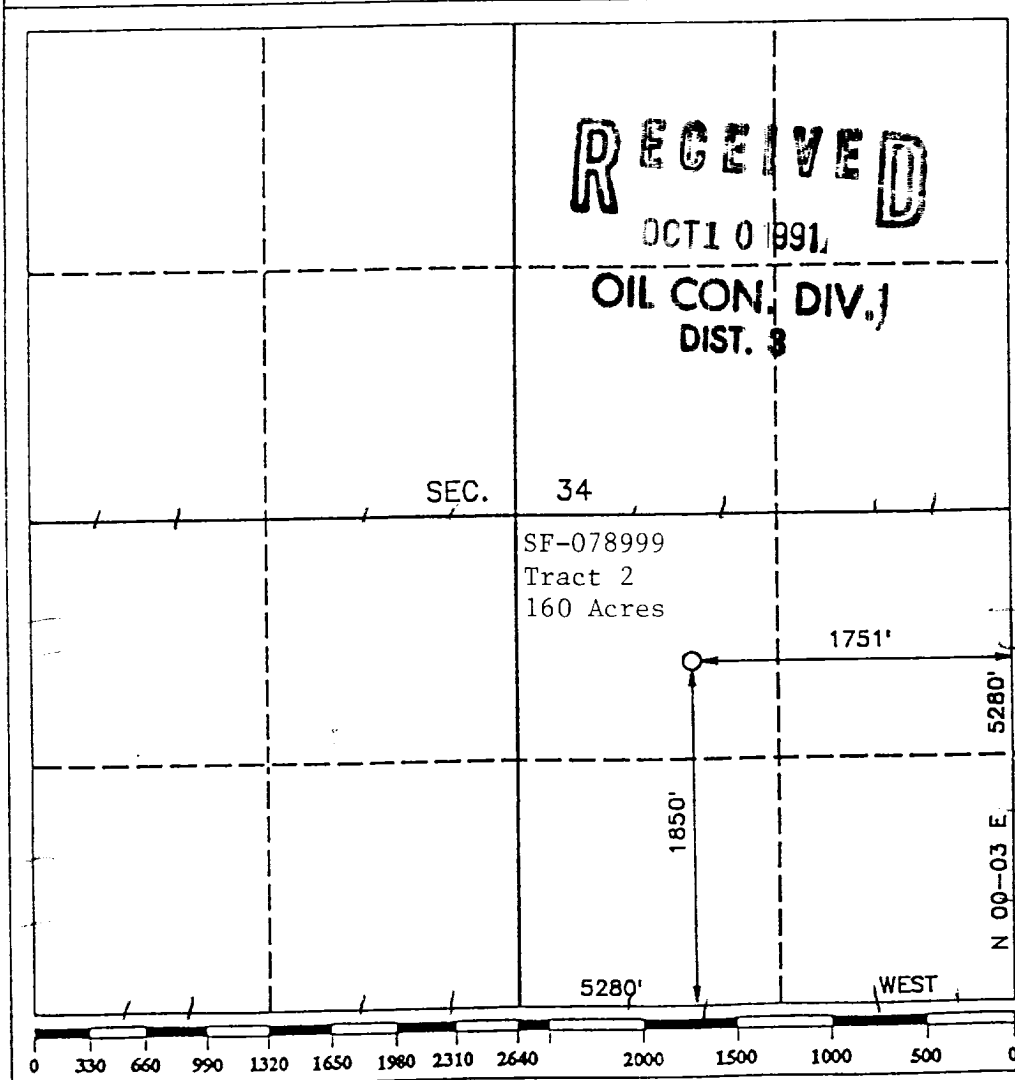
DISTRICT III
1000 Rio Brazos Rd., Aztec, NM 87410

WELL LOCATION AND ACREAGE DEDICATION PLAT

All Distances must be from the outer boundaries of the section

Operator PHILLIPS PETROLEUM		Lease SAN JUAN 31-6 UNIT		Well No. 28E
Unit Letter J	Section 34	Township T.31 N.	Range R.6 W.	County RIO ARriba COUNTY
Actual Footage Location of Well: 1850 feet from the SOUTH line and 1751 feet from the EAST line				
Ground level Elev. 6530	Producing Formation DAKOTA	Pool BASIN DAKOTA	Dedicated Acreage: 320 Acres	

- Outline the acreage dedicated to the subject well by colored pencil or hatchure marks on the plat below.
- If more than one lease is dedicated to the well, outline each and identify the ownership thereof (both as to working interest and royalty).
- If more than one lease of different ownership is dedicated to the well, have the interest of all owners been consolidated by communitization, unitization, force-pooling, etc.?
☒ Yes ☐ No If answer is "yes" type of consolidation Unitization
If answer is "no" list the owners and tract descriptions which have actually been consolidated. (Use reverse side of this form if necessary.)
No allowable will be assigned to the well until all interests have been consolidated (by communitization, unitization, forced-pooling, or otherwise) or until a non-standard unit, eliminating such interest, has been approved by the Division.



OPERATOR CERTIFICATION

I hereby certify that the information contained herein is true and complete to the best of my knowledge and belief.

Signature
L. E. Robinson
Printed Name
L. E. Robinson
Position
Sr. Drlg. & Prod. Engr.
Company
Phillips Petroleum Co.
Date
September 25, 1991

SURVEYOR CERTIFICATION

I hereby certify that the well location shown on this plat was plotted from field notes of actual surveys made by me or under my supervision, and that the same is true and correct to the best of my knowledge and belief.

Date Surveyed
SEPTEMBER 14, 1991
Signature & Seal of Professional Surveyor
HENRY P. BROADHURST, JR.
Certification No.
11393
PROFESSIONAL SURVEYOR

1940 1123 112
1940 1123 112

1940 1123 112
1940 1123 112

SAN JUAN SI-6 UNIT
DAKOTA WELLS

27°30' 281

282

4557 IV NW
(BANCOS MESA NW)

284

25'

285

286

